

UNITED STATES
DEPARTMENT OF THE INTERIOR
GEOLOGICAL SURVEY

APPLICATION FOR PERMIT TO DRILL, DEEPEN, OR PLUG BACK

1a. TYPE OF WORK

DRILL ☒DEEPEN ☐PLUG BACK ☐

b. TYPE OF WELL

OIL
WELL ☐GAS
WELL ☒

OTHER

SINGLE
ZONE ☐MULTIPLE
ZONE ☒

2. NAME OF OPERATOR

Continental Oil Company

3. ADDRESS OF OPERATOR

Box 460, Hobbs, N.M. 88240

4. LOCATION OF WELL (Report location clearly and in accordance with any State requirements.)*

At surface

1190' FNL & 1850' FWL of Sec. 11

At proposed prod. zone

Same

14. DISTANCE IN MILES AND DIRECTION FROM NEAREST TOWN OR POST OFFICE*

15. DISTANCE FROM PROPOSED*

LOCATION TO NEAREST
PROPERTY OR LEASE LINE, FT.
(Also to nearest drig. unit line, if any)

16. NO. OF ACRES IN LEASE

2563.60

18. DISTANCE FROM PROPOSED LOCATION*

TO NEAREST WELL, DRILLING, COMPLETED,
OR APPLIED FOR, ON THIS LEASE, FT.

19. PROPOSED DEPTH

6290

17. NO. OF ACRES ASSIGNED

TO THIS WELL

S. BLANCO-PC-160; BLANCO MV-320

20. ROTARY OR CABLE TOOLS

Rotary

21. ELEVATIONS (Show whether DF, RT, GR, etc.)

7383' GR

22. APPROX. DATE WORK WILL START*

4-21-77

23.

PROPOSED CASING AND CEMENTING PROGRAM

SIZE OF HOLE	SIZE OF CASING	WEIGHT PER FOOT	SETTING DEPTH	QUANTITY OF CEMENT
12 1/4"	8 5/8"	24#	500'	310 SX-CIRC
7 7/8"	5 1/2"	14#	6290'	480 SX

It is proposed to drill a straight hole to a total depth of 6290' & complete a dual gas well in the South Blanco Pictured Cliffs and the Blanco Mesa Verde.

Mud Program: 0-500' Fresh water; 500-6290' Fresh Water Gel 8.5-9.0#

See attached B.O.P. program

See attached Proposed Well Plan for formation tops, logging, etc.

Acres are dedicated to a gas purchaser.

IN ABOVE SPACE DESCRIBE PROPOSED PROGRAM. If proposal is to deepen or plug back, give data on present productive zone and proposed new productive zone. If proposal is to drill or deepen directionally, give pertinent data on subsurface locations and measured and true vertical depths. Give blowout preventer program, if any.

24.

SIGNED

Wm. A. Butterfield

TITLE

ADMIN. SUPV.

DATE

3-16-77

(This space for Federal or State office use)

PERMIT NO.

APPROVAL DATE

APPROVED BY

APPROVED

TITLE

DATE

CONDITIONS OF APPROVAL, IF ANY:

JUN 6 1977

*See Instructions On Reverse Side

CARL A. BARRICK

ACTING DISTRICT ENGINEER

115GS-DUTAR 1016 GAS Co. of NM (2) MTI RFA FILE EXXON

**NEW MEXICO OIL CONSERVATION COMMISSION
WELL LOCATION AND ACERAGE DEDICATION PLAT**

All distances must be from the outer boundaries of the Section

Operator CONTINENTAL OIL COMPANY			Lease AXI APACHE "N"		Well No. 12
Unit Letter C	Section 11	Township 25 NORTH	Range 4 WEST	County RIO ARriba	
Actual Footage Location of Well <div style="display: flex; justify-content: space-between;"> 1190 feet from the NORTH line and 1850 feet from the WEST line </div>					
Ground Level Elev. 7383	Producing Formation Mesa Verde		Pool Blanco Mesa Verde	Dedicated Acreage 320	Acre

1. Outline the acreage dedicated to the subject well by colored pencil or hachure marks on the plat below.
2. If more than one lease is dedicated to the well, outline each and identify the ownership thereof (both as to working interest and royalty).
3. If more than one lease of different ownership is dedicated to the well, have the interests of all owners been consolidated by communitization, unitization, force-pooling, etc?

() Yes () No If answer is "yes," type of consolidation _____

If answer is "no," list the owners and tract descriptions which have actually consolidated. (Use reverse side of this form if necessary.) _____

No allowable will be assigned to the well until all interests have been consolidated (by communitization, unitization, forced-pooling, or otherwise) or until a non standard unit, eliminating such interests, has been approved by the Commission.

CERTIFICATION

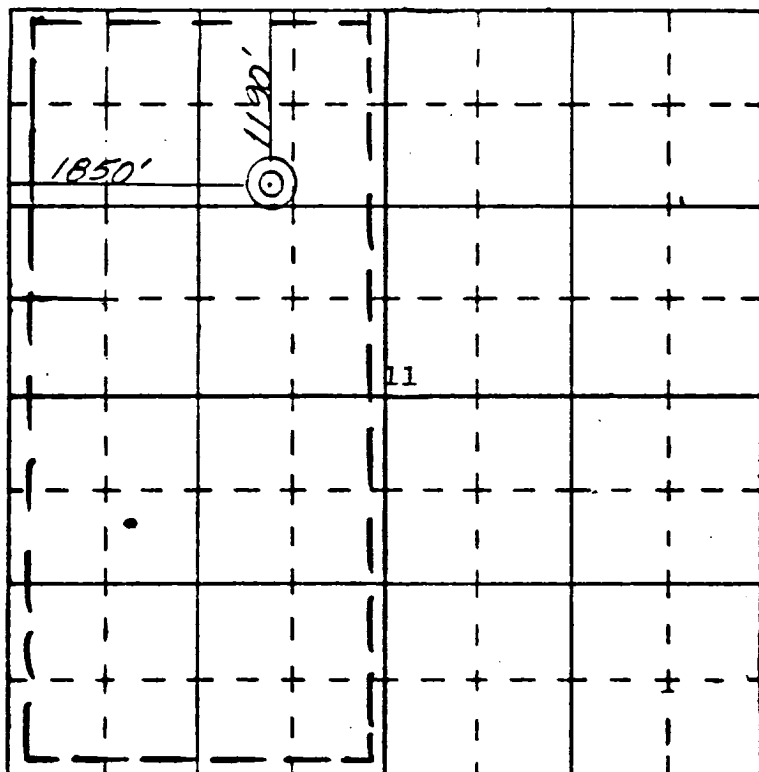
I hereby certify that the information contained herein is true and complete to the best of my knowledge and belief.

Name Wm. A. Butterfield
 Position ADMIN. SUPERV.
 Company Continental Oil Co.
 Date 3-16-77

I hereby certify that the well location shown on this plat was plotted from field notes of actual surveys made by me or under my supervision, and that the same is true and correct to the best of my knowledge and belief.

17 February 1977
 Date Surveyed
James P. Loose
 Registered Professional Engineer
 and/or Land Surveyor **James P. Loose**

1463
 Certificate No.



N