

UNITED STATES
DEPARTMENT OF THE INTERIOR
GEOLOGICAL SURVEY

APPLICATION FOR PERMIT TO DRILL, DEEPEN, OR PLUG BACK

1a. TYPE OF WORK

DRILL ☒DEEPEN ☐PLUG BACK ☐

b. TYPE OF WELL

OIL
WELL ☐GAS
WELL ☒

OTHER

SINGLE
ZONE ☒MULTIPLE
ZONE ☐

2. NAME OF OPERATOR

Petro-Lewis Corporation

3. ADDRESS OF OPERATOR

P.O. Box 509 - Levelland, Texas 79336

4. LOCATION OF WELL (Report location clearly and in accordance with any State requirements.*)

At surface

2000' FNL & 960' FEL

At proposed prod. zone 8420'

14. DISTANCE IN MILES AND DIRECTION FROM NEAREST TOWN OR POST OFFICE*

20 miles NW of Lindrith, New Mexico

15. DISTANCE FROM PROPOSED*

LOCATION TO NEAREST

PROPERTY OR LEASE LINE, FT.

(Also to nearest drlg. unit line, if any)

18. DISTANCE FROM PROPOSED LOCATION*
TO NEAREST WELL, DRILLING, COMPLETED,
OR APPLIED FOR, ON THIS LEASE, FT.

16. NO. OF ACRES IN LEASE

981.39

19. PROPOSED DEPTH

8420'

17. NO. OF ACRES ASSIGNED
TO THIS WELL

391.56

20. ROTARY OR CABLE TOOLS

Rotary

21. ELEVATIONS (Show whether DF, RT, GR, etc.)

7271'

22. APPROX. DATE WORK WILL START*

1-27-78

23.

PROPOSED CASING AND CEMENTING PROGRAM

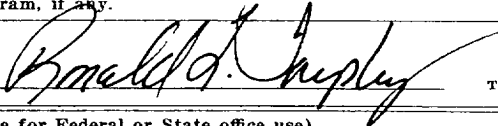
SIZE OF HOLE	SIZE OF CASING	WEIGHT PER FOOT	SETTING DEPTH	QUANTITY OF CEMENT
12-1/4"	8-5/8"	24#	500'	300 sx. to surface
7-7/8"	5-1/2"	15.5# & 17#	8420'	1225 sx. to 2000'

1. Set 40' of 20" conductor pipe and cement to surface.
2. Drill 12-1/4" hole to 500' and run 8-5/8" OD, 24#, K-55, casing and cement w/300 sxs. to surface.
3. Drill 7-7/8" hole to 8420' and run 5-1/2" OD, 15.5# and 17#, K-55 and cement w/1225 sxs. to 2000', in two stages. DV tool @ 4500'.
4. RI and run temperature survey, locate TOC - 2000' est.
5. Run CBL-VDL - 2000' - TD, cmt. bonding log w/GR - collar for perf.
6. Prep to complete as Dakota producer.
7. Rig has 10" 3000 PSI, hydraulic BOP.

IN ABOVE SPACE DESCRIBE PROPOSED PROGRAM: If proposal is to deepen or plug back, give data on present productive zone and proposed new productive zone. If proposal is to drill or deepen directionally, give pertinent data on subsurface locations and measured and true vertical depths. Give blowout preventer program, if any.

24.

SIGNED



TITLE

Sr. Drilling Foreman

DATE

1-12-78

(This space for Federal or State office use)

PERMIT NO.

APPROVAL DATE

APPROVED BY

TITLE

DATE

CONDITIONS OF APPROVAL, IF ANY:

**NEW MEXICO OIL CONSERVATION COMMISSION
WELL LOCATION AND ACREAGE DEDICATION PLAT**

Form C-102
Supersedes C-128
Effective 1-1-65

All distances must be from the outer boundaries of the Section.

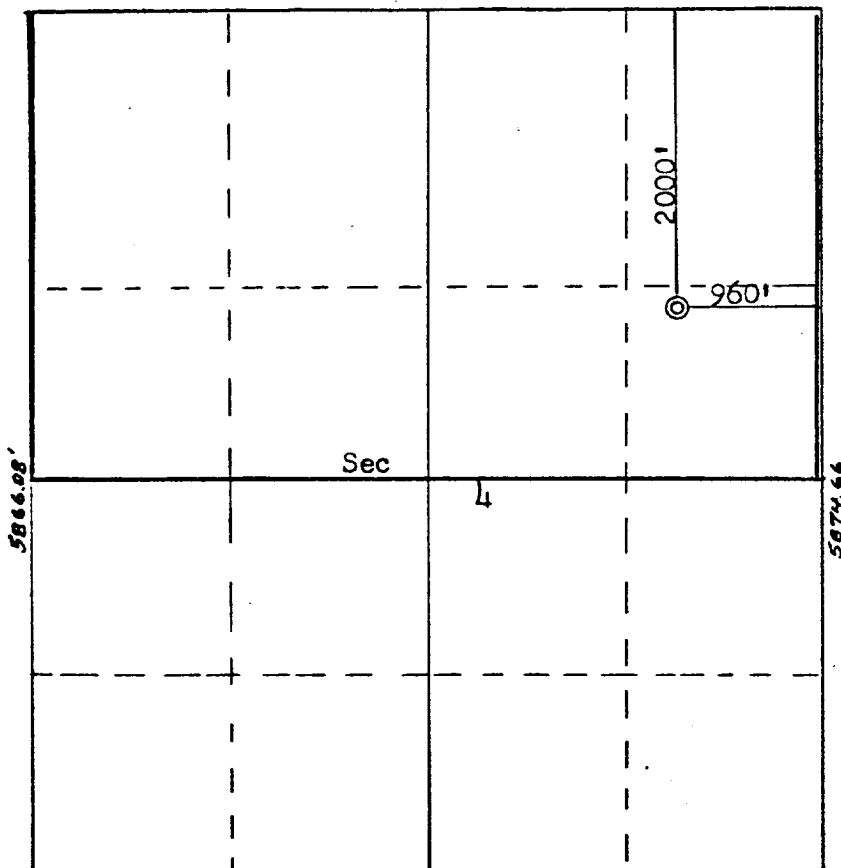
Operator PETRO-LEWIS CORPORATION			Lease FLORENCE		Well No. 6
Unit Letter H	Section 4	Township 25N	Range 3W	County Rio Arriba	
Actual Footage Location of Well:					
2000		feet from the North	line and	960	feet from the East line
Ground Level Elev: 7271	Producing Formation Dakota		Pool Basin		Dedicated Acreage: 391.56 Acres

1. Outline the acreage dedicated to the subject well by colored pencil or hachure marks on the plat below.
2. If more than one lease is dedicated to the well, outline each and identify the ownership thereof (both as to working interest and royalty).
3. If more than one lease of different ownership is dedicated to the well, have the interests of all owners been consolidated by communitization, unitization, force-pooling, etc?

☐ Yes ☐ No If answer is "yes," type of consolidation _____

If answer is "no," list the owners and tract descriptions which have actually been consolidated. (Use reverse side of this form if necessary.) _____

No allowable will be assigned to the well until all interests have been consolidated (by communitization, unitization, forced-pooling, or otherwise) or until a non-standard unit, eliminating such interests, has been approved by the Commission.



SCALE: 1" = 1320'

CERTIFICATION

I hereby certify that the information contained herein is true and complete to the best of my knowledge and belief.

Ron Tarpley
 Name
Ron Tarpley
 Position
Sr. Drilling Foreman
 Company
Petro-Lewis Corporation
 Date
5-25-78

I hereby certify that the well location shown on this plat was plotted from field notes of actual surveys made by me or under my supervision, and that the same is true and correct to the best of my knowledge and belief.

Date Surveyed
October 26, 1977
 Registered Professional Engineer and Land Surveyor
Fred B. Kerr Jr.
Fred B. Kerr Jr.
 Certificate No. _____