

UNITED STATES
DEPARTMENT OF THE INTERIOR
GEOLOGICAL SURVEY

APPLICATION FOR PERMIT TO DRILL, DEEPEN, OR PLUG BACK

1a. TYPE OF WORK

DRILL ☒DEEPEN ☐PLUG BACK ☐

b. TYPE OF WELL

OIL
WELL ☒GAS
WELL ☐

OTHER

SINGLE
ZONE ☒MULTIPLE
ZONE ☐

2. NAME OF OPERATOR

ODESSA NATURAL CORPORATION

ATT: John Strojek

3. ADDRESS OF OPERATOR

P. O. Box 3908, Odessa, Texas 79760

4. LOCATION OF WELL (Report location clearly and in accordance with any State requirements.)*

At surface

1850' FSL, 790' FWL ✓

At proposed prod. zone

Same

14. DISTANCE IN MILES AND DIRECTION FROM NEAREST TOWN OR POST OFFICE*

Not applicable

15. DISTANCE FROM PROPOSED*

LOCATION TO NEAREST

PROPERTY OR LEASE LINE, FT.

(Also to nearest drlg. unit line, if any) 790'

16. NO. OF ACRES IN LEASE

--

17. NO. OF ACRES ASSIGNED
TO THIS WELL

160 ✓

18. DISTANCE FROM PROPOSED LOCATION*

TO NEAREST WELL, DRILLING, COMPLETED,
OR APPLIED FOR, ON THIS LEASE, FT.

--

19. PROPOSED DEPTH

7600

20. ROTARY OR CABLE TOOLS

Rotary

21. ELEVATIONS (Show whether DF, RT, GR, etc.)

7088' GR, 7101' DF, 7102' KB

22. APPROX. DATE WORK WILL START*

3-15-78

23.

PROPOSED CASING AND CEMENTING PROGRAM

SIZE OF HOLE	SIZE OF CASING	WEIGHT PER FOOT	SETTING DEPTH	QUANTITY OF CEMENT
12-1/4"	8-5/8"	24.0	350	350 Sacks
7-7/8"	4-1/2"	10.50 & 11.60	7600	To be determined

It is proposed to drill this well with rotary tools, using oil base mud as circulation medium, through the Dakota Formation. Possible productive zones in the Dakota Formation will be completed. Production casing will be cemented in such a manner as to protect the Pictured Cliffs Formation.

Estimated Formation Tops

Pictured Cliffs	3030'	Greenhorn
Cliff House	4600'	Graneros
Gallup	6140'	Dakota

The SW/4 Section 33 is dedicated to this well.
The natural gas produced from this well is committed.

IN ABOVE SPACE DESCRIBE PROPOSED PROGRAM: If proposal is to deepen or plug back, give data on present productive zone and proposed new productive zone. If proposal is to drill or deepen directionally, give pertinent data on subsurface locations and measured and true vertical depths. Give blowout preventer program, if any.

24. For: ODESSA NATURAL CORPORATION

SIGNED

Ewell N. Walsh, P. E.

TITLE President, Walsh Engin. & Production Corporation DATE 2/24/78

(This space for Federal or State office use)

PERMIT NO.

APPROVAL DATE

APPROVED BY

TITLE

DATE

CONDITIONS OF APPROVAL, IF ANY:

*See Instructions On Reverse Side

30-039-21666

5. LEASE DESIGNATION AND SERIAL NO.

NM-28715

6. IF INDIAN, ALLOTTEE OR TRIBE NAME

7. UNIT AGREEMENT NAME

8. FARM OR LEASE NAME

Little Federal 33

9. WELL NO.

1

10. FIELD AND POOL, OR WILDCAT

Chacon Dakota

Associated Pool

11. SEC., T., R., M., OR BLK.

AND SURVEY OR AREA

Sec. 33-T24N-R3W

N. M. P. M.

12. COUNTY OR PARISH

13. STATE

Rio Arriba N. M.



NEW MEXICO OIL CONSERVATION COMMISSION
WELL LOCATION AND ACREAGE DEDICATION PLAT

Form O-101
Supersedes O-100
Effective 10-1-68

All distances must be from the outer boundaries of the Section.

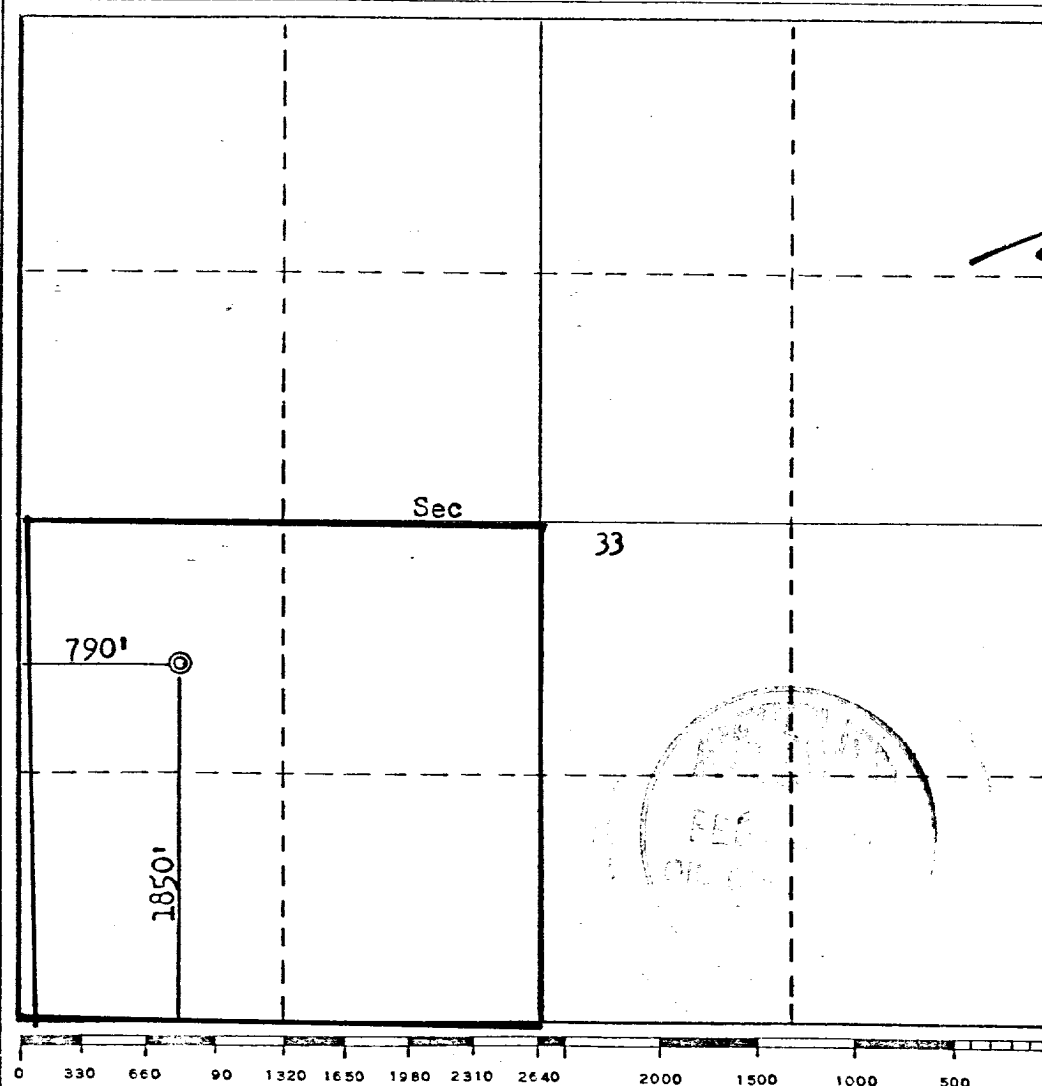
Operator Odessa Natural Corporation			Lease Little - Federal 33		Well No. 1
Unit Letter L	Section 33	Township 24N	Range 3W	County Rio Arriba	
Actual Footage Location of Well:					
1850		feet from the South	line and 790	feet from the West	line
Ground Level Elev. 7088	Producing Formation Dakota		Pool Chacon Dakota Associated Pool		Dedicated Acreage: 160 Acres

1. Outline the acreage dedicated to the subject well by colored pencil or hatchure marks on the plat below.
2. If more than one lease is dedicated to the well, outline each and identify the ownership thereof (both as to working interest and royalty).
3. If more than one lease of different ownership is dedicated to the well, have the interests of all owners been consolidated by communitization, unitization, force-pooling, etc?

☐ Yes ☐ No If answer is "yes," type of consolidation _____

If answer is "no," list the owners and tract descriptions which have actually been consolidated. (Use reverse side of this form if necessary.) _____

No allowable will be assigned to the well until all interests have been consolidated (by communitization, unitization, forced-pooling, or otherwise) or until a non-standard unit, eliminating such interests, has been approved by the Commission.



CERTIFICATION

I hereby certify that the information contained herein is true and complete to the best of my knowledge and belief.

For: **Odessa Natural Corporation**

Ewell N. Walsh

Position
President

Company **Walsh Engineering & Production Corporation**

Date
2/24/78

I hereby certify that the well location shown on this plat was plotted from field notes of actual surveys made by me or under my supervision, and that the same is true and correct to the best of my knowledge and belief.

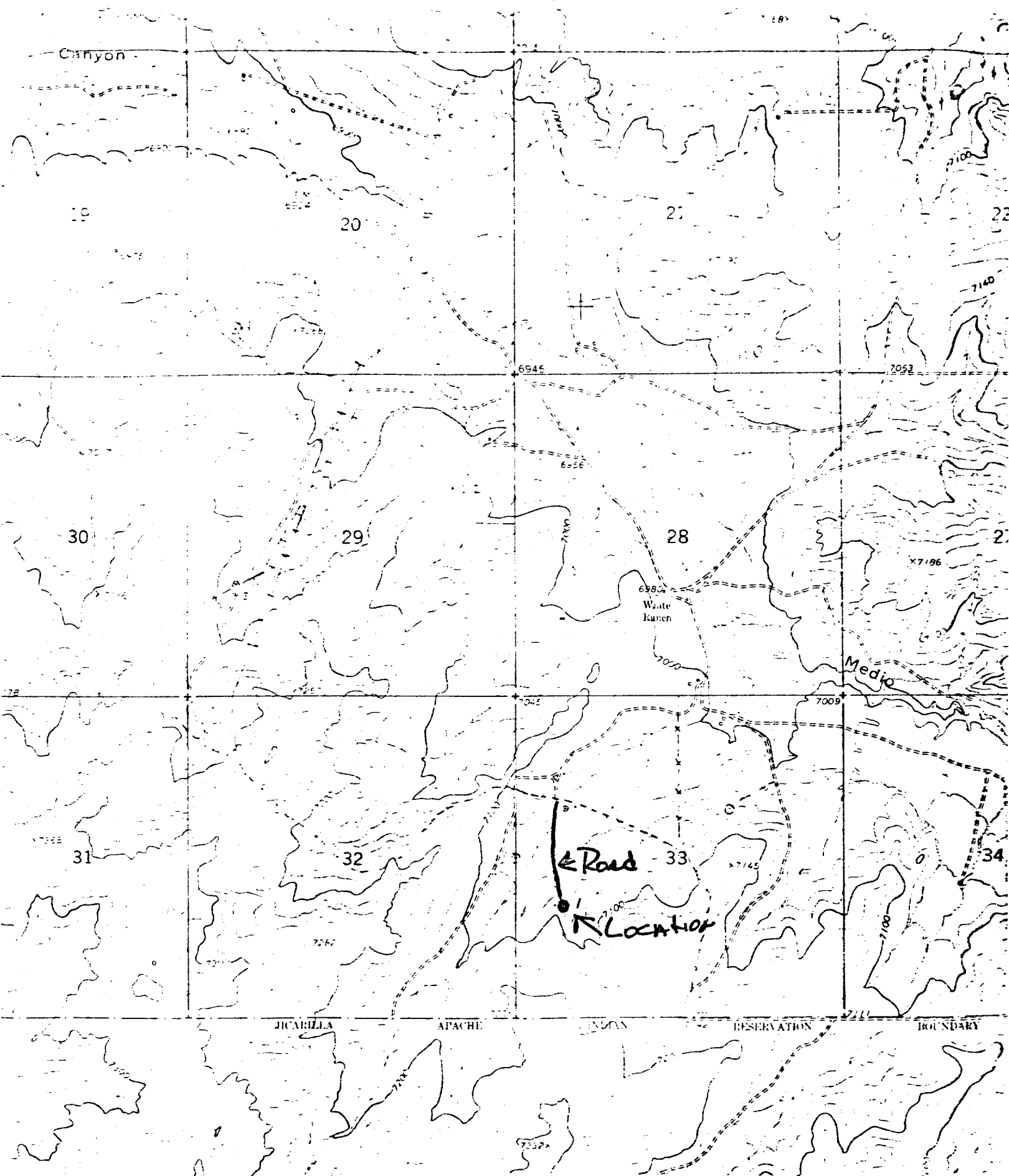
Date Surveyed
February 21, 1978

Registered Professional Engineer and/or Land Surveyor

Fred B. Kerr Jr.

Certificate No.

3950



Vicinity Map for
 ODESSA NATURAL CORP. #1 Little-Federal 33
 1850'FSL 790'FWL Sec 33-T24N-R3W
 Rio Arriba County, New Mexico