

UNITED STATES
DEPARTMENT OF THE INTERIOR
GEOLOGICAL SURVEY

30-039-21933

APPLICATION FOR PERMIT TO DRILL, DEEPEN, OR PLUG BACK

1a. TYPE OF WORK

DRILL ☒DEEPEN ☐PLUG BACK ☐

b. TYPE OF WELL

OIL
WELL ☒GAS
WELL ☐OTHER ☐SINGLE
ZONE ☒MULTIPLE
ZONE ☐

2. NAME OF OPERATOR

CONTINENTAL OIL COMPANY

3. ADDRESS OF OPERATOR

Box 460, Hobbs, N.M. 88240

4. LOCATION OF WELL (Report location clearly and in accordance with any State requirements.)*

At surface

450' FSL & 990' FEL

At proposed prod. zone

SAME

14. DISTANCE IN MILES AND DIRECTION FROM NEAREST TOWN OR POST OFFICE*

15. DISTANCE FROM PROPOSED*

LOCATION TO NEAREST
PROPERTY OR LEASE LINE, FT.
(Also to nearest drlg. unit line, if any)

16. NO. OF ACRES IN LEASE

2560

18. DISTANCE FROM PROPOSED LOCATION*
TO NEAREST WELL, DRILLING, COMPLETED,
OR APPLIED FOR, ON THIS LEASE, FT.

19. PROPOSED DEPTH

8000'

17. NO. OF ACRES ASSIGNED
TO THIS WELL

160

20. ROTARY OR CABLE TOOLS

ROTARY

21. ELEVATIONS (Show whether DF, RT, GR, etc.)

6823' GR

22. APPROX. DATE WORK WILL START*

12-1-78

23. PROPOSED CASING AND CEMENTING PROGRAM

SIZE OF HOLE	SIZE OF CASING	WEIGHT PER FOOT	SETTING DEPTH	QUANTITY OF CEMENT
12 1/4	8 5/8	24"	1000	550 sv
7 7/8	5 1/2	15.5" & 17.0"	7550	770 sv

It is proposed to drill a straight hole to a TD of 8000' and complete as a W. Lindrith Gallup
Dakota oil well.

see attached for MUD and B.O.P. program

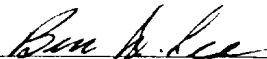
see attached Proposed well Plan for formation tops, logging pgm., etc..

acrouge is dedicated to a gas purchaser.

IN ABOVE SPACE DESCRIBE PROPOSED PROGRAM: If proposal is to deepen or plug back, give data on present productive zone and proposed new productive zone. If proposal is to drill or deepen directionally, give pertinent data on subsurface locations and measured and true vertical depths. Give blowout preventer program, if any.

24.

SIGNED



TITLE

ADMINISTRATIVE SUPERVISOR

DATE 9-26-78

(This space for Federal or State office use)

PERMIT NO.

APPROVAL DATE

APPROVED BY

TITLE

CONDITIONS OF APPROVAL, IF ANY:

RECEIVED

SEP 29 1978

USGS Durango, [6] BEA, FILE, El Paso, MJL

ch Frank

*See Instructions On Reverse Side

U. S. GEOLOGICAL SURVEY
DURANGO, COLO.

NEW MEXICO OIL CONSERVATION COMMISSION
WELL LOCATION AND ACREAGE DEDICATION PLAT

Form C-1
Supersedes C-1,
Effective 1-1-67

All distances must be from the outer boundaries of the Section

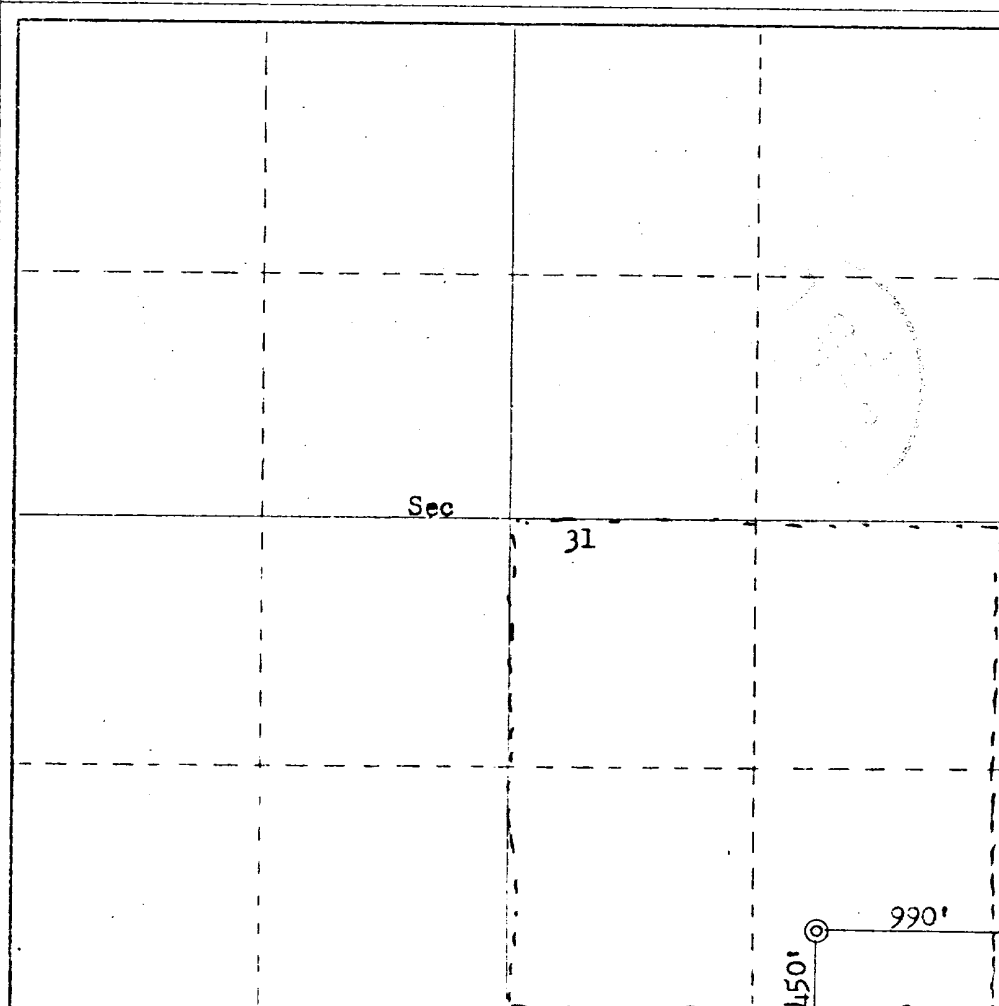
Lessee CONTINENTAL OIL COMPANY			Locality JICARILLA 30		Section 13
Well Letter P	Section 31	Township 25N	Range 1W	County RIO ARriba	
Actual Footage Location of Well:					
450	feet from the	South	line and	990	feet from the
					East
Ground Level Elev. 6823	Producing Formation Gallup Dakota		Pool West Lindrith Gallup Dakota		Dedicated Acreage: 160

1. Outline the acreage dedicated to the subject well by colored pencil or hachure marks on the plat below.
2. If more than one lease is dedicated to the well, outline each and identify the ownership thereof (both as to working interest and royalty).
3. If more than one lease of different ownership is dedicated to the well, have the interests of all owners been consolidated by communitization, unitization, force-pooling, etc?

☐ Yes ☐ No If answer is "yes," type of consolidation _____

If answer is "no," list the owners and tract descriptions which have actually been consolidated. (Use reverse side of this form if necessary.) _____

No allowable will be assigned to the well until all interests have been consolidated (by communitization, unitization, forced-pooling, or otherwise) or until a non-standard unit, eliminating such interests, has been approved by the Commission.



CERTIFICATION

I hereby certify that the information contained herein is true and complete to the best of my knowledge and belief.

Name
Ben A. Lee
Position
Administrative Supervisor
Company
Continental Oil Co.
Date
Sept. 26, 1978

I hereby certify that the well location shown on this plat was plotted from field notes of actual surveys made by me or under my supervision, and that the same is true and correct to the best of my knowledge and belief.

Date Surveyed
August 22, 1978
Investigated by
Fred B. Kerr Jr.
Fred B. Kerr Jr.
Continental Oil Co.
3950

ATTACHMENT TO FORM 9-331 C
APPLICATION FOR PERMIT TO DRILL

Continental Oil Company
Jicarilla 28 No. 17 and Jicarilla 30 Nos. 13, 14, and 15
T-25N, R-4W
Rio Arriba County, New Mexico

1. The geologic name of the surface formation is Quaternary Sand.
2. The estimated tops of important geologic markers are shown on the attached Proposed Well Plan.
3. The estimated depths at which anticipated water, oil, gas or other mineral-bearing formations to be encountered are shown on attached Proposed Well Plan.
4. The proposed casing program is as follows:

(See Proposed Well Plan Outlines)
5. A drawing of an API Series 900 Blowout Preventer Specification is attached. Pipe rams and blinds will be checked to 1,000 PSI for 30 minutes when BOP is installed. BOP will be checked when casing string is set and operated daily for checks.
6. The proposed mud program is as follows:

(See Proposed Well Plan Outlines)
7. The auxiliary equipment to be used is:

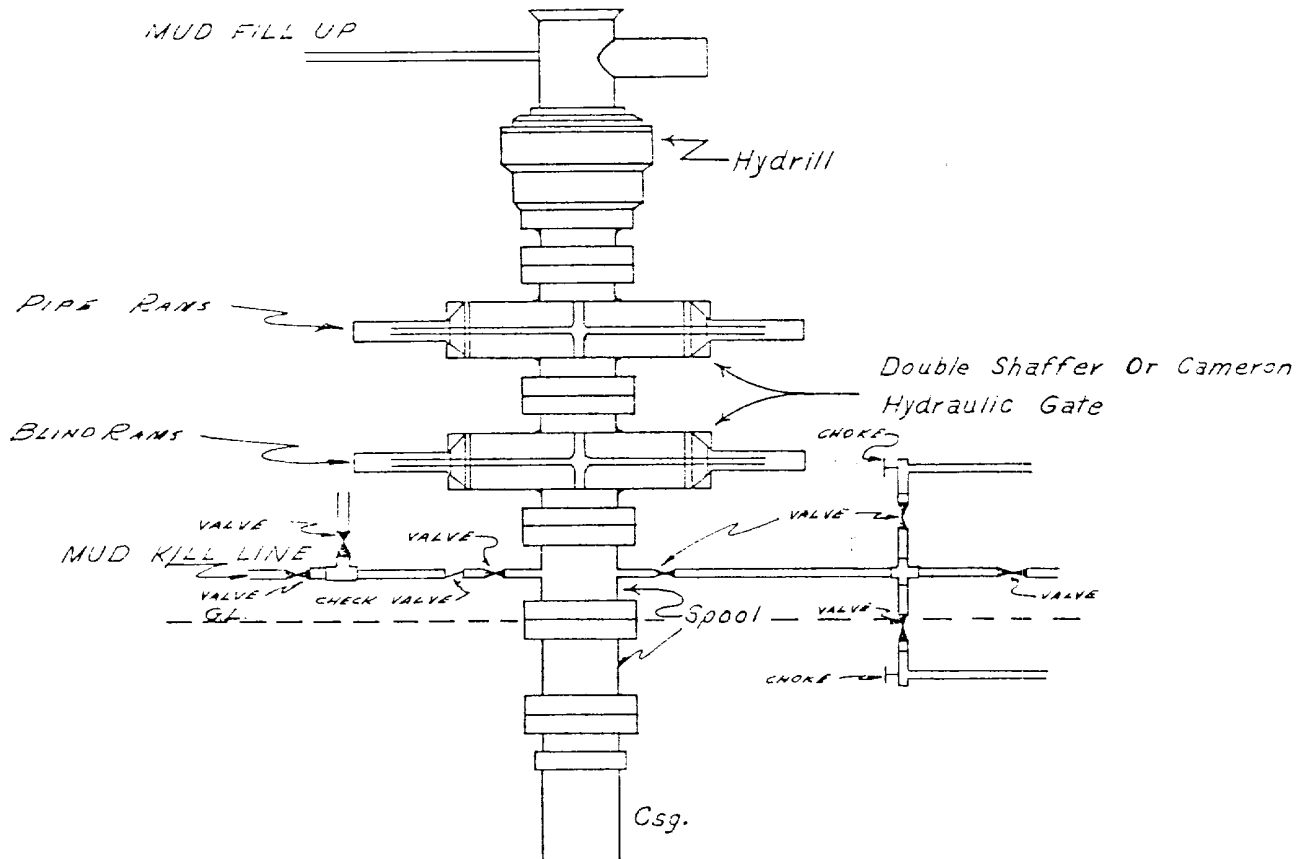
 (1) kelly cocks
 (2) floats at the bit
8. It is proposed to run SP-IES log from TD to approximately (See Proposed Well Plan Outlines) and GR CAL CNL FDC PDC logs at selected intervals.
9. No abnormal pressure or temperatures are expected to be encountered in this well.
10. The anticipated starting date for the first well is November 15, 1978 with a duration date of approximately 21 days for each well.

PROPOSED REVISIONS

REVISION NO.	DATE	DESCRIPTION OF REVISION	APPROVED BY
1		1. Add new section on page 10.	
2		2. Revise paragraph 3.2.	
3		3. Update references in Appendix A.	
4		4. Correct typo on page 5.	
5		5. Add new figure on page 12.	
6		6. Revise table 1.	
7		7. Add new section on page 15.	
8		8. Revise paragraph 4.1.	
9		9. Update references in Appendix B.	
10		10. Correct typo on page 8.	
11		11. Add new figure on page 18.	
12		12. Revise table 2.	
13		13. Add new section on page 20.	
14		14. Revise paragraph 5.1.	
15		15. Update references in Appendix C.	

16- Add new section on page 22.
 17- Revise paragraph 6.1.
 18- Update references in Appendix D.
 19- Correct typo on page 10.
 20- Add new figure on page 25.
 21- Revise table 3.
 22- Add new section on page 28.
 23- Revise paragraph 7.1.
 24- Update references in Appendix E.
 25- Correct typo on page 15.
 26- Add new figure on page 30.
 27- Revise table 4.
 28- Add new section on page 32.
 29- Revise paragraph 8.1.
 30- Update references in Appendix F.
 31- Correct typo on page 20.
 32- Add new figure on page 35.
 33- Revise table 5.
 34- Add new section on page 38.
 35- Revise paragraph 9.1.
 36- Update references in Appendix G.
 37- Correct typo on page 25.
 38- Add new figure on page 40.
 39- Revise table 6.
 40- Add new section on page 42.
 41- Revise paragraph 10.1.
 42- Update references in Appendix H.
 43- Correct typo on page 30.
 44- Add new figure on page 45.
 45- Revise table 7.
 46- Add new section on page 48.
 47- Revise paragraph 11.1.
 48- Update references in Appendix I.
 49- Correct typo on page 35.
 50- Add new figure on page 50.
 51- Revise table 8.
 52- Add new section on page 52.
 53- Revise paragraph 12.1.
 54- Update references in Appendix J.
 55- Correct typo on page 40.
 56- Add new figure on page 55.
 57- Revise table 9.
 58- Add new section on page 58.
 59- Revise paragraph 13.1.
 60- Update references in Appendix K.
 61- Correct typo on page 45.
 62- Add new figure on page 60.
 63- Revise table 10.
 64- Add new section on page 62.
 65- Revise paragraph 14.1.
 66- Update references in Appendix L.
 67- Correct typo on page 50.
 68- Add new figure on page 65.
 69- Revise table 11.
 70- Add new section on page 68.
 71- Revise paragraph 15.1.
 72- Update references in Appendix M.
 73- Correct typo on page 55.
 74- Add new figure on page 70.
 75- Revise table 12.
 76- Add new section on page 72.
 77- Revise paragraph 16.1.
 78- Update references in Appendix N.
 79- Correct typo on page 60.
 80- Add new figure on page 75.
 81- Revise table 13.
 82- Add new section on page 78.
 83- Revise paragraph 17.1.
 84- Update references in Appendix O.
 85- Correct typo on page 65.
 86- Add new figure on page 80.
 87- Revise table 14.
 88- Add new section on page 82.
 89- Revise paragraph 18.1.
 90- Update references in Appendix P.
 91- Correct typo on page 70.
 92- Add new figure on page 85.
 93- Revise table 15.
 94- Add new section on page 88.
 95- Revise paragraph 19.1.
 96- Update references in Appendix Q.
 97- Correct typo on page 75.
 98- Add new figure on page 90.
 99- Revise table 16.
 100- Add new section on page 92.
 101- Revise paragraph 20.1.
 102- Update references in Appendix R.
 103- Correct typo on page 80.
 104- Add new figure on page 95.
 105- Revise table 17.
 106- Add new section on page 98.
 107- Revise paragraph 21.1.
 108- Update references in Appendix S.
 109- Correct typo on page 85.
 110- Add new figure on page 100.
 111- Revise table 18.
 112- Add new section on page 102.
 113- Revise paragraph 22.1.
 114- Update references in Appendix T.
 115- Correct typo on page 90.
 116- Add new figure on page 105.
 117- Revise table 19.
 118- Add new section on page 108.
 119- Revise paragraph 23.1.
 120- Update references in Appendix U.
 121- Correct typo on page 95.
 122- Add new figure on page 110.
 123- Revise table 20.
 124- Add new section on page 112.
 125- Revise paragraph 24.1.
 126- Update references in Appendix V.
 127- Correct typo on page 100.
 128- Add new figure on page 115.
 129- Revise table 21.
 130- Add new section on page 118.
 131- Revise paragraph 25.1.
 132- Update references in Appendix W.
 133- Correct typo on page 105.
 134- Add new figure on page 120.
 135- Revise table 22.
 136- Add new section on page 122.
 137- Revise paragraph 26.1.
 138- Update references in Appendix X.
 139- Correct typo on page 110.
 140- Add new figure on page 125.
 141- Revise table 23.
 142- Add new section on page 128.
 143- Revise paragraph 27.1.
 144- Update references in Appendix Y.
 145- Correct typo on page 115.
 146- Add new figure on page 130.
 147- Revise table 24.
 148- Add new section on page 132.
 149- Revise paragraph 28.1.
 150- Update references in Appendix Z.
 151- Correct typo on page 120.
 152- Add new figure on page 135.
 153- Revise table 25.
 154- Add new section on page 138.
 155- Revise paragraph 29.1.
 156- Update references in Appendix AA.
 157- Correct typo on page 125.
 158- Add new figure on page 140.
 159- Revise table 26.
 160- Add new section on page 142.
 161- Revise paragraph 30.1.
 162- Update references in Appendix AB.
 163- Correct typo on page 130.
 164- Add new figure on page 145.
 165- Revise table 27.
 166- Add new section on page 148.
 167- Revise paragraph 31.1.
 168- Update references in Appendix AC.
 169- Correct typo on page 135.
 170- Add new figure on page 150.
 171- Revise table 28.
 172- Add new section on page 152.
 173- Revise paragraph 32.1.
 174- Update references in Appendix AD.
 175- Correct typo on page 140.
 176- Add new figure on page 155.
 177- Revise table 29.
 178- Add new section on page 158.
 179- Revise paragraph 33.1.
 180- Update references in Appendix AE.
 181- Correct typo on page 145.
 182- Add new figure on page 160.
 183- Revise table 30.
 184- Add new section on page 162.
 185- Revise paragraph 34.1.
 186- Update references in Appendix AF.
 187- Correct typo on page 150.
 188- Add new figure on page 165.
 189- Revise table 31.
 190- Add new section on page 168.
 191- Revise paragraph 35.1.
 192- Update references in Appendix AG.
 193- Correct typo on page 155.
 194- Add new figure on page 170.
 195- Revise table 32.
 196- Add new section on page 172.
 197- Revise paragraph 36.1.
 198- Update references in Appendix AH.
 199- Correct typo on page 160.
 200- Add new figure on page 175.
 201- Revise table 33.
 202- Add new section on page 178.
 203- Revise paragraph 37.1.
 204- Update references in Appendix AI.
 205- Correct typo on page 165.
 206- Add new figure on page 180.
 207- Revise table 34.
 208- Add new section on page 182.
 209- Revise paragraph 38.1.
 210- Update references in Appendix AJ.
 211- Correct typo on page 170.
 212- Add new figure on page 185.
 213- Revise table 35.
 214- Add new section on page 188.
 215- Revise paragraph 39.1.
 216- Update references in Appendix AK.
 217- Correct typo on page 175.
 218- Add new figure on page 190.
 219- Revise table 36.
 220- Add new section on page 192.
 221- Revise paragraph 40.1.
 222- Update references in Appendix AL.
 223- Correct typo on page 180.
 224- Add new figure on page 195.
 225- Revise table 37.
 226- Add new section on page 198.
 227- Revise paragraph 41.1.
 228- Update references in Appendix AM.
 229- Correct typo on page 185.
 230- Add new figure on page 200.
 231- Revise table 38.
 232- Add new section on page 202.
 233- Revise paragraph 42.1.
 234- Update references in Appendix AN.
 235- Correct typo on page 190.
 236- Add new figure on page 205.
 237- Revise table 39.
 238- Add new section on page 208.
 239- Revise paragraph 43.1.
 240- Update references in Appendix AO.
 241- Correct typo on page 195.
 242- Add new figure on page 210.
 243- Revise table 40.
 244- Add new section on page 212.
 245- Revise paragraph 44.1.
 246- Update references in Appendix AP.
 247- Correct typo on page 200.
 248- Add new figure on page 215.
 249- Revise table 41.
 250- Add new section on page 218.
 251- Revise paragraph 45.1.
 252- Update references in Appendix AQ.
 253- Correct typo on page 205.
 254- Add new figure on page 220.
 255- Revise table 42.
 256- Add new section on page 222.
 257- Revise paragraph 46.1.
 258- Update references in Appendix AR.
 259- Correct typo on page 210.
 260- Add new figure on page 225.
 261- Revise table 43.
 262- Add new section on page 228.
 263- Revise paragraph 47.1.
 264- Update references in Appendix AS.
 265- Correct typo on page 215.
 266- Add new figure on page 230.
 267- Revise table 44.
 268- Add new section on page 232.
 269- Revise paragraph 48.1.
 270- Update references in Appendix AT.
 271- Correct typo on page 220.
 272- Add new figure on page 235.
 273- Revise table 45.
 274- Add new section on page 238.
 275- Revise paragraph 49.1.
 276- Update references in Appendix AU.
 277- Correct typo on page 225.
 278- Add new figure on page 240.
 279- Revise table 46.
 280- Add new section on page 242.
 281- Revise paragraph 50.1.
 282- Update references in Appendix AV.
 283- Correct typo on page 230.
 284- Add new figure on page 245.
 285- Revise table 47.
 286- Add new section on page 248.
 287- Revise paragraph 51.1.
 288- Update references in Appendix AW.
 289- Correct typo on page 235.
 290- Add new figure on page 250.
 291- Revise table 48.
 292- Add new section on page 252.
 293- Revise paragraph 52.1.
 294- Update references in Appendix AX.
 295- Correct typo on page 240.
 296- Add new figure on page 255.
 297- Revise table 49.
 298- Add new section on page 258.
 299- Revise paragraph 53.1.
 300- Update references in Appendix AY.
 301- Correct typo on page 245.
 302- Add new figure on page 260.
 303- Revise table 50.
 304- Add new section on page 262.
 305- Revise paragraph 54.1.
 306- Update references in Appendix AZ.
 307- Correct typo on page 250.
 308- Add new figure on page 265.
 309- Revise table 51.
 310- Add new section on page 268.
 311- Revise paragraph 55.1.
 312- Update references in Appendix BA.
 313- Correct typo on page 255.
 314- Add new figure on page 270.
 315- Revise table 52.
 316- Add new section on page 272.
 317- Revise paragraph 56.1.
 318- Update references in Appendix BB.
 319- Correct typo on page 260.
 320- Add new figure on page 275.
 321- Revise table 53.
 322- Add new section on page 278.
 323- Revise paragraph 57.1.
 324- Update references in Appendix BC.
 325- Correct typo on page 265.
 326- Add new figure on page 280.
 327- Revise table 54.
 328- Add new section on page 282.
 329- Revise paragraph 58.1.
 330- Update references in Appendix BD.
 331- Correct typo on page 270.
 332- Add new figure on page 285.
 333- Revise table 55.
 334- Add new section on page 288.
 335- Revise paragraph 59.1.
 336- Update references in Appendix BE.
 337- Correct typo on page 275.
 338- Add new figure on page 290.
 339- Revise table 56.
 340- Add new section on page 292.
 341- Revise paragraph 60.1.
 342- Update references in Appendix BF.
 343- Correct typo on page 280.
 344- Add new figure on page 295.
 345- Revise table 57.
 346- Add new section on page 298.
 347- Revise paragraph 61.1.
 348- Update references in Appendix BG.
 349- Correct typo on page 285.
 350- Add new figure on page 300.
 351- Revise table 58.
 352- Add new section on page 302.
 353- Revise paragraph 62.1.
 354- Update references in Appendix BH.
 355- Correct typo on page 290.
 356- Add new figure on page 305.
 357- Revise table 59.
 358- Add new section on page 308.
 359- Revise paragraph 63.1.
 360- Update references in Appendix BI.
 361- Correct typo on page 295.
 362- Add new figure on page 310.
 363- Revise table 60.
 364- Add new section on page 312.
 365- Revise paragraph 64.1.
 366- Update references in Appendix BJ.
 367- Correct typo on page 300.
 368- Add new figure on page 315.
 369- Revise table 61.
 370- Add new section on page 318.
 371- Revise paragraph 65.1.
 372- Update references in Appendix BK.
 373- Correct typo on page 305.
 374- Add new figure on page 320.
 375- Revise table 62.
 376- Add new section on page 322.
 377- Revise paragraph 66.1.
 378- Update references in Appendix BL.
 379- Correct typo on page 310.
 380- Add new figure on page 325.
 381- Revise table 63.
 382- Add new section on page 328.
 383- Revise paragraph 67.1.
 384- Update references in Appendix BM.
 385- Correct typo on page 315.
 386- Add new figure on page 330.
 387- Revise table 64.
 388- Add new section on page 332.
 389- Revise paragraph 68.1.
 390- Update references in Appendix BN.
 391- Correct typo on page 320.
 392- Add new figure on page 335.
 393- Revise table 65.
 394- Add new section on page 338.
 395- Revise paragraph 69.1.
 396- Update references in Appendix BO.
 397- Correct typo on page 325.
 398- Add new figure on page 340.
 399- Revise table 66.
 400- Add new section on page 342.
 401- Revise paragraph 70.1.
 402- Update references in Appendix BP.
 403- Correct typo on page 330.
 404- Add new figure on page 345.
 405- Revise table 67.
 406- Add new section on page 348.
 407- Revise paragraph 71.1.
 408- Update references in Appendix BQ.
 409- Correct typo on page 335.
 410- Add new figure on page 350.
 411- Revise table 68.
 412- Add new section on page 352.
 413- Revise paragraph 72.1.
 414- Update references in Appendix BR.
 415- Correct typo on page 340.
 416- Add new figure on page 355.
 417- Revise table 69.
 418- Add new section on page 358.
 419- Revise paragraph 73.1.
 420- Update references in Appendix BS.
 421- Correct typo on page 345.
 422- Add new figure on page 360.
 423- Revise table 70.
 424- Add new section on page 362.
 425- Revise paragraph 74.1.
 426- Update references in Appendix BT.
 427- Correct typo on page 350.
 428- Add new figure on page 365.
 429- Revise table 71.
 430- Add new section on page 368.
 431- Revise paragraph 75.1.
 432- Update references in Appendix BU.
 433- Correct typo on page 355.
 434- Add new figure on page 370.
 435- Revise table 72.
 436- Add new section on page 372.
 437- Revise paragraph 76.1.
 438- Update references in Appendix BV.
 439- Correct typo on page 360.
 440- Add new figure on page 375.
 441- Revise table 73.
 442- Add new section on page 378.
 443- Revise paragraph 77.1.
 444- Update references in Appendix BW.
 445- Correct typo on page 365.
 446- Add new figure on page 380.
 447- Revise table 74.
 448- Add new section on page 382.
 449- Revise paragraph 78.1.
 450- Update references in Appendix BX.
 451- Correct typo on page 370.
 452- Add new figure on page 385.
 453- Revise table 75.
 454- Add new section on page 388.
 455- Revise paragraph 79.1.
 456- Update references in Appendix BY.
 457- Correct typo on page 375.
 458- Add new figure on page 390.
 459- Revise table 76.
 460- Add new section on page 392.
 461- Revise paragraph 80.1.
 462- Update references in Appendix BZ.
 463- Correct typo on page 380.
 464- Add new figure on page 395.
 465- Revise table 77.
 466- Add new section on page 398.
 467- Revise paragraph 81.1.
 468- Update references in Appendix CA.
 469- Correct typo on page 385.
 470- Add new figure on page 400.
 471- Revise table 78.
 472- Add new section on page 402.
 473- Revise paragraph 82.1.
 474- Update references in Appendix CB.
 475- Correct typo on page 390.
 476- Add new figure on page 405.
 477- Revise table 79.
 478- Add new section on page 408.
 479- Revise paragraph 83.1.
 480- Update references in Appendix CC.
 481- Correct typo on page 395.
 482- Add new figure on page 410.
 483- Revise table 80.
 484- Add new section on page 412.
 485- Revise paragraph 84.1.
 486- Update references in Appendix CD.
 487- Correct typo on page 400.
 488- Add new figure on page 415.
 489- Revise table 81.
 490- Add new section on page 418.
 491- Revise paragraph 85.1.
 492- Update references in Appendix CE.
 493- Correct typo on page 405.
 494- Add new figure on page 420.
 495- Revise table 82.
 496- Add new section on page 422.
 497- Revise paragraph 86.1.
 498- Update references in Appendix CF.
 499- Correct typo on page 410.
 500- Add new figure on page 425.
 501- Revise table 83.
 502- Add new section on page 428.
 503- Revise paragraph 87.1.
 504- Update references in Appendix CG.
 505- Correct typo on page 415.
 506- Add new figure on page 430.
 507- Revise table 84.
 508- Add new section on page 432.
 509- Revise paragraph 88.1.
 510- Update references in Appendix CH.
 511- Correct typo on page 420.
 512- Add new figure on page 435.
 513- Revise table 85.
 514- Add new section on page 438.
 515- Revise paragraph 89.1.
 516- Update references in Appendix CI.
 517- Correct typo on page 425.
 518- Add new figure on page 440.
 519- Revise table 86.
 520- Add new section on page 442.
 521- Revise paragraph 90.1.
 522- Update references in Appendix CJ.
 523- Correct typo on page 430.
 524- Add new figure on page 445.
 525- Revise table 87.
 526- Add new section on page 448.
 527- Revise paragraph 91.1.
 528- Update references in Appendix CK.
 529- Correct typo on page 435.
 530- Add new figure on page 450.
 531- Revise table 88.
 532- Add new section on page 452.
 533- Revise paragraph 92.1.
 534- Update references in Appendix CL.
 535- Correct typo on page 440.
 536- Add new figure on page 455.
 537- Revise table 89.
 538- Add new section on page 458.
 539- Revise paragraph 93.1.
 540- Update references in Appendix CM.
 541- Correct typo on page 445.
 542- Add new figure on page 460.
 543- Revise table 90.
 544- Add new section on page 462.
 545- Revise paragraph 94.1.
 546- Update references in Appendix CN.
 547- Correct typo on page 450.
 548- Add new figure on page 465.
 549- Revise table 91.
 550- Add new section on page 468.
 551- Revise paragraph 95.1.
 552- Update references in Appendix CO.
 553- Correct typo on page 455.
 554- Add new figure on page 470.
 555- Revise table 92.
 556- Add new section on page 472.
 557- Revise paragraph 96.1.
 558- Update references in Appendix CP.
 559- Correct typo on page 460.
 560- Add new figure on page 475.
 561- Revise table 93.
 562- Add new section on page 478.
 563- Revise paragraph 97.1.
 564- Update references in Appendix CQ.
 565- Correct typo on page 465.
 566- Add new figure on page 480.
 567- Revise table 94.
 568- Add new section on page 482.
 569- Revise paragraph 98.1.
 570- Update references in Appendix CR.
 571- Correct typo on page 470.
 572- Add new figure on page 485.
 573- Revise table 95.
 574- Add new section on page 488.
 575- Revise paragraph 99.1.
 576- Update references in Appendix CS.
 577- Correct typo on page 475.
 578- Add new figure on page 490.
 579- Revise table 96.
 580- Add new section on page 492.
 581- Revise paragraph 100.1.
 582- Update references in Appendix CT.
 583- Correct typo on page 480.
 584- Add new figure on page 495.
 585- Revise table 97.
 586- Add new section on page 498.
 587- Revise paragraph 101.1.
 588- Update references in Appendix CU.
 589- Correct typo on page 485.
 590- Add new figure on page 500.
 591- Revise table 98.
 592- Add new section on page 502.
 593- Revise paragraph 102.1.
 594- Update references in Appendix CV.
 595- Correct typo on page 490.
 596- Add new figure on page 505.
 597- Revise table 99.
 598- Add new section on page 508.
 599- Revise paragraph 103.1.
 600- Update references in Appendix CW.
 601- Correct typo on page 495.
 602- Add new figure on page 510.
 603- Revise table 100.
 604- Add new section on page 512.
 605- Revise paragraph 104.1.
 606- Update references in Appendix CX.
 607- Correct typo on page 500.
 608- Add new figure on page 515.
 609- Revise table 101.
 610- Add new section on page 518.
 611- Revise paragraph 105.1.
 612- Update references in Appendix CY.
 613- Correct typo on page 505.
 614- Add new figure on page 520.
 615- Revise table 102.
 616- Add new section on page 522.
 617- Revise paragraph 106.1.
 618- Update references in Appendix CZ.
 619- Correct typo on page 510.
 620- Add new figure on page 525.
 621- Revise table 103.
 622- Add new section on page 528.
 623- Revise paragraph 107.1.
 624-

CONTINENTAL OIL COMPANY
Blow-out Preventer Specifications



NOTE:

API SERIES 900

Manual and Hydraulic controls with closing unit no less than 75' from well head.
Remote controls on rig floor.

DUE TO SUBSTRUCTURE CLEARANCE,
HYDRILL MAY OR MAY NOT BE USED.

SURFACE USE PLAN
Continental Oil Company
Jicarilla 28 No. 17 and Jicarilla 30 Nos. 13, 14, and 15
T-25N, R-4W
Rio Arriba County, New Mexico

The plan is to accompany "Application for Permit to Drill" the subject well. The following is a discussion of pertinent information concerning possible effect which the proposed drilling of the well may have on the environment of the well and road sites and surrounding acreage. A copy will be posted on the derrick floor so that all contractors and sub-contractors will be aware of all items of this plan.

1. Existing Roads

A. The proposed well sites are as follows:

Jicarilla 28 No. 17	1830' FWL and 450' FSL of Section 28
Jicarilla 30 No. 13	450' FSL and 990' FEL of Section 31
Jicarilla 30 No. 14	2310' FNL and 990' FEL of Section 31
Jicarilla 30 No. 15	2070' FNL and 1980' FWL of Section 32

B. Exhibit "A" is a portion of a Jicarilla 28 and Jicarilla 30 lease map showing existing roads and proposed new road and location.

C. Access Roads are shown on Exhibits "A" and "B".

2. Planned Access Roads

Refer to the attached archaeological report.

3. Location of Existing Wells

See Exhibit "A"

4. Location of Existing and/or Proposed Facilities

A. Tank Batteries: Two 400 bbl. tank and a production unit will be located on each well site.

B. Rehabilitation: Pits will be backfilled and leveled as soon as practical to original condition. Commencement of rehabilitation operations will immediately follow removal of drilling and completion equipment from locations. Rehabilitation of the surface is planned to be completed within 45 days from commencement.

5. Water Supply

The supply of water will be hauled from Largo Wash. (See Exhibit "C")

6. Source of Construction Materials

Not applicable. Drilling pad to be compacted.

7. Methods for Handling Waste Disposal

Waste Disposal: Well cuttings will be disposed in reserve pit. Trash pit is shown on "Rig Layout", Exhibit "D". All detrimental waste will be buried with a minimum of 24" of dirt. See Exhibit "D" for location of pits.

8. Ancillary Facilities

None

9. Well Site Layout

Exhibit "D" shows the relative location and dimensions of the well pad, mud pit, reserve pit, trash barrel, etc.

10. Plans for Restoration of Surface

Pits will be backfilled and leveled as soon as practical to original condition. Commencement of rehabilitation operations will immediately follow removal of drilling and completion equipment from location. Surface will be leveled and properly conditioned as required by USGS after consulting with proper surface managing agency.

11. Other Information

- A. Terrain: "A" through "C" refer to the attached archaeological report.
- B. Soil: Sandy loam
- C. Vegetation: Primarily sage, blue grama, occasional pinyon and Juniper, and various flowering herbs.
- D. Surface Use: Suitable for grazing
- E. Ponds and Streams: None within one mile
- F. Water Wells: None within one mile
- G. Residences and Buildings: None within one mile
- H. Arroyos, Canyons, Etc.: See attached topographic map, Exhibit "B".
- I. Well Sign: Sign identifying and locating well will be maintained at drill site with the spudding of the well.
- J. Open Pits: All pits containing mud or other liquids will be fenced.
- K. Archaeological Resources: None observed.

12. Operator's Representative

Field personnel who can be contacted concerning compliance of this Surface Use Plan are as follows:

PRODUCTION AND DRILLING

B. E. Anderson
Petroleum Center Building
Room 215
501 Airport Drive
Farmington, New Mexico
Phone: (505) 327-9557

L. P. Thompson
1001 North Turner
Hobbs, New Mexico 88240
Phone: (505) 393-4141

E. L. Oshlo
1001 North Turner
Hobbs, New Mexico 88240
Phone: (505) 393-4141

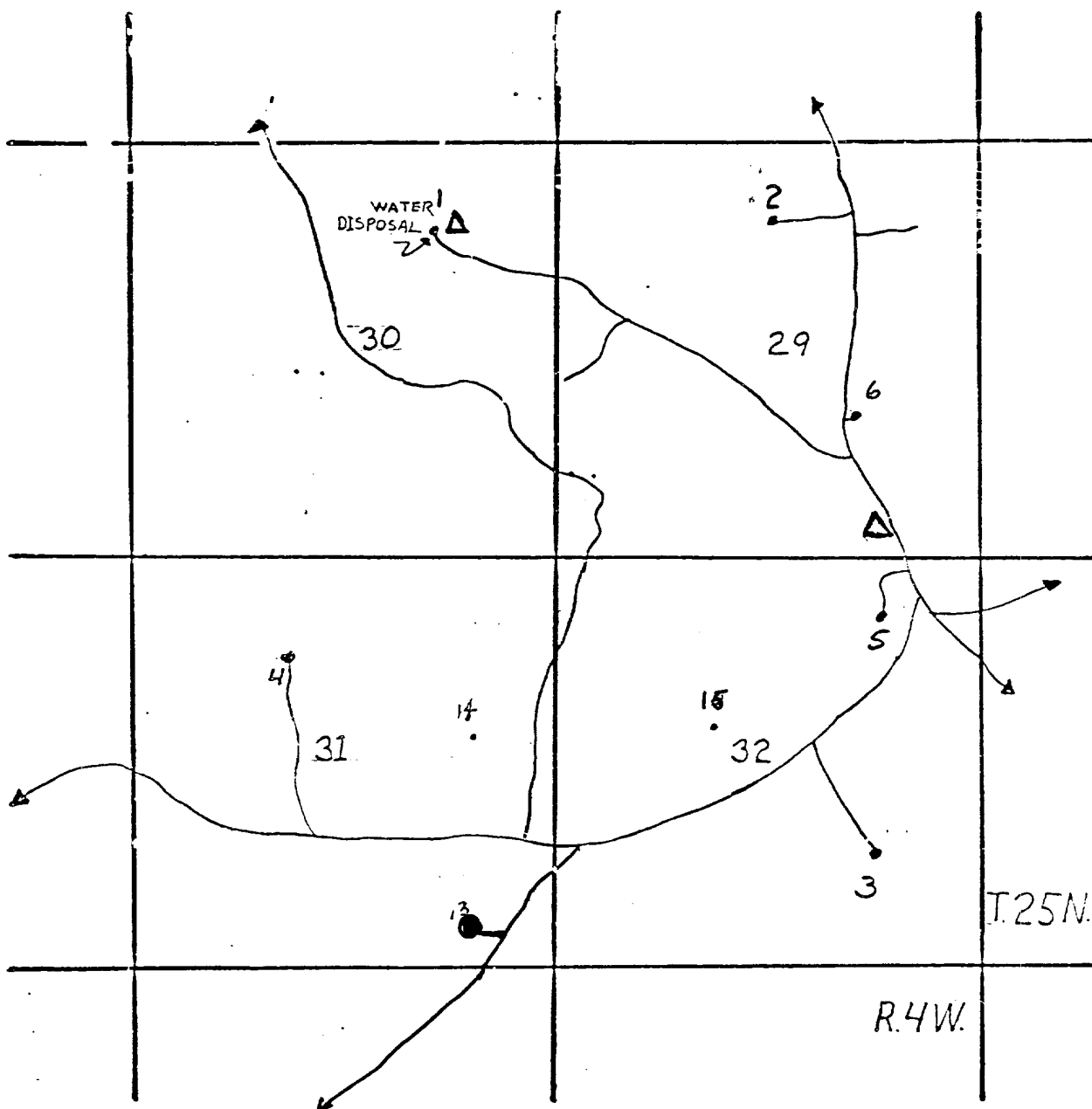
13. Certification

I hereby certify that I, or persons under my direct supervision, have inspected the proposed drill site and access route; that I am familiar with the conditions which presently exist; that the statements made in this plan are, to the best of my knowledge, true and correct; and that the work associated with the operations proposed herein will be performed by Continental Oil Company and its contractors and sub-contractors in conformity with this plan and the terms and conditions under which it is approved.

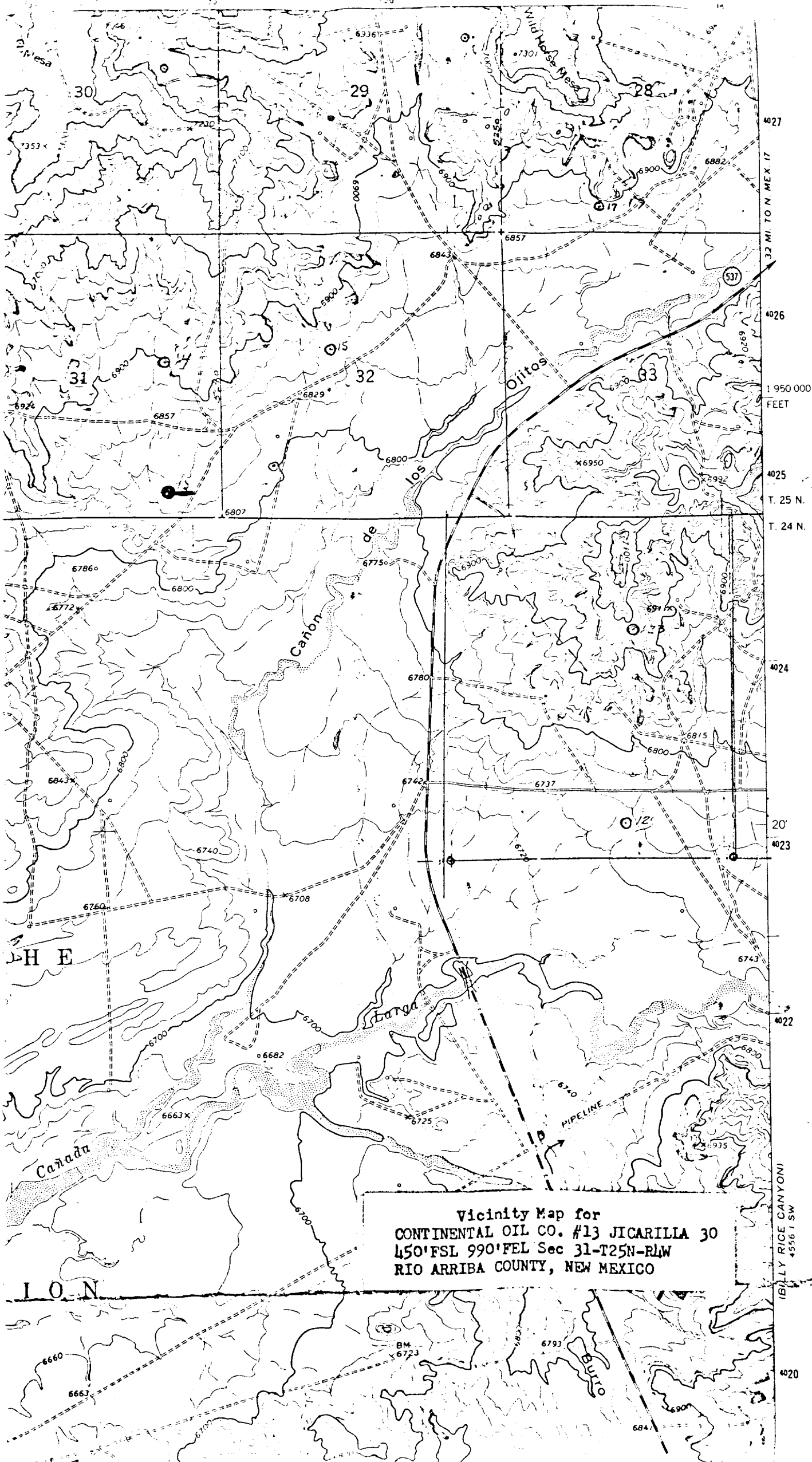
Sept. 26, 1978
Date

[Signature]
Division Manager

bnp

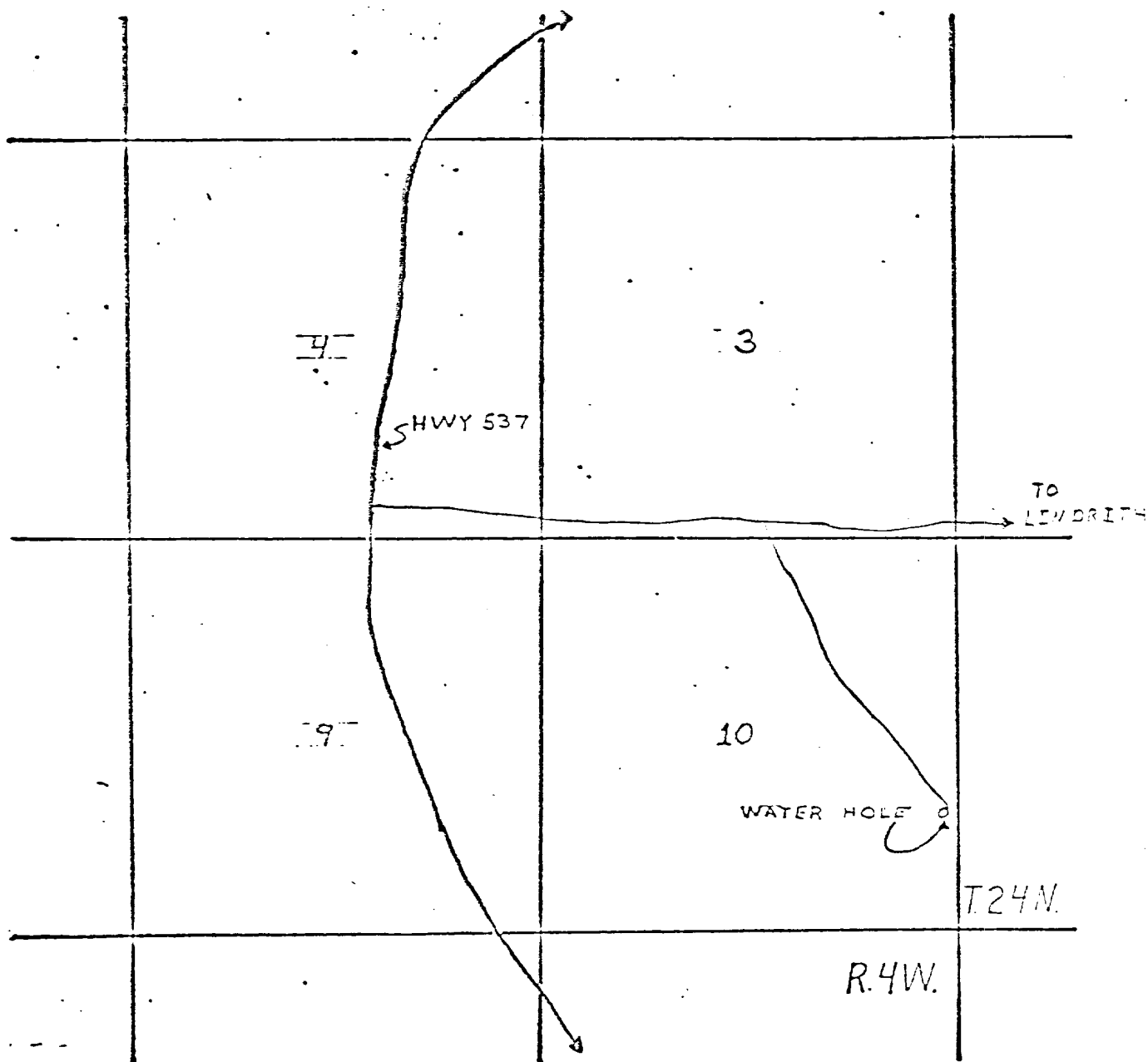


CONOCO	
PRODUCTION DEPT. HOBBS DIV.	
JICARILLA "30" LEASE	
LEGEND	
•	CONOCO WELL
△	TANK BATTERY
—	LEASE ROAD
—	HWY.
NTS CHAVEZ	



Vicinity Map for
CONTINENTAL OIL CO. #13 JICARILLA 30
450' FSL 990' FEL Sec 31-T25N-R1W
RIO ARriba COUNTY, NEW MEXICO

(BULLY RICE CANYON)
4556' SW



CONOCO

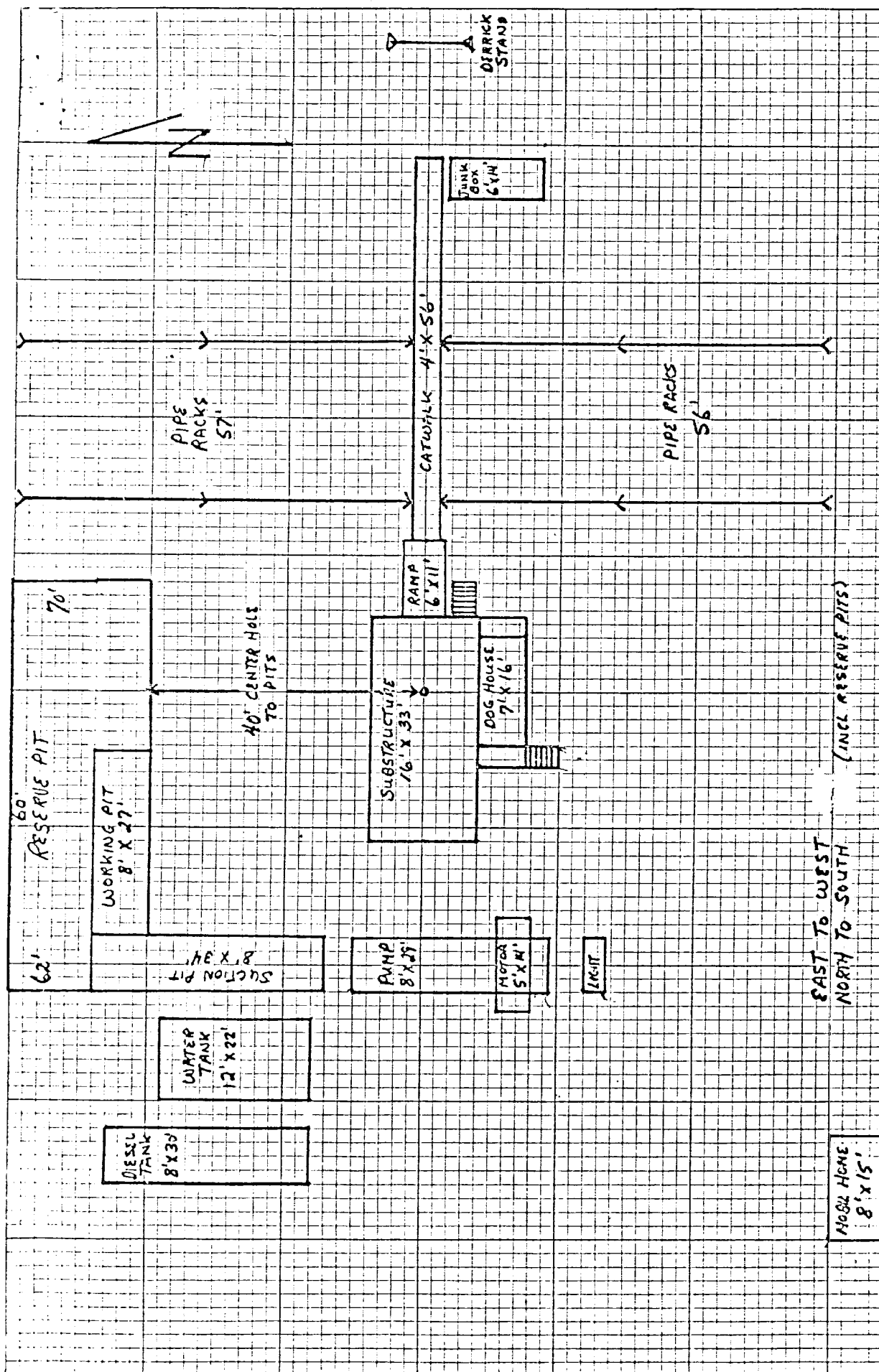
PRODUCTION DEPT. HOBBS DIV.
LARGO WATER HOLE

LEGEND

- CONOCO WELL
- △ TANK BATTERY
- LEASE ROAD
- HWY.

EXHIBIT C

NTS
CHAVEZ



Archaeological Clearance Survey Report
for
Continental Oil Company

Well Locations

~~AXI~~ Jicarilla 30-13
~~AXI~~ Jicarilla 30-14
~~AXI~~ Jicarilla 30-15
~~AXI~~ Jicarilla **28**-17
~~AXI~~ AXI Apache N-19
~~AXI~~ AXI Apache N-18
~~AXI~~ AXI Apache N-16
~~AXI~~ AXI Apache N-17
~~AXI~~ AXI Apache J-33

Prepared by
John B. Schooley

Submitted by
Meade F. Kemrer, PhD.
Principal Investigator

DIVISION OF CONSERVATION ARCHAEOLOGY

Contributions to Anthropology Series, No. 84
San Juan County Archaeological Research Center and Library

August 23, 1978

Abstract

An archaeological clearance survey was performed on August 22, 1978 for Continental Oil Company by the Division of Conservation Archaeology of the San Juan County Archaeological Research Center and Library. The survey involved nine well pads and associated access roads on lands under the jurisdiction of the Jicarilla Apache Tribe.

Since the cultural resources found are not to be directly or indirectly impacted by the proposed construction, archaeological clearance has been recommended for all areas.

Introduction

The Division of Conservation Archaeology of the San Juan County Archaeological Research Center and Library has completed an archaeological clearance survey for Continental Oil Company, on lands under the jurisdiction of the Jicarilla Apache Tribe. The lands are to be impacted by the construction of nine well pads and associated access roads.

The survey was initiated at the request of Mr. Joe McKinney of Achinson Construction Company, Incorporated, on August 18, 1978. It was administered by Mr. B.E. Anderson of Continental Oil Company and by Dr. Meade Kemrer of the Division of Conservation Archaeology.

Legislation enacted by the Congress of the United States requires compliance with laws designed to protect archaeological resources. Laws such as the National Environmental Policy Act of 1969 (PL 91-852) and Executive Order No. 11593 entitled "Protection and Enhancement of the Cultural Environment" prevent enterprises which might result in the destruction or alteration of cultural resources. Federal and State governments and the professional scientific community have come to realize that the material remains of a prior culture are a limited, non-renewable part of the environment. As such, the State of New Mexico has enacted legislation regulating archaeological resources. The Cultural Properties Act is analogous in content to the National Historic Preservation Act of 1966 (PL 89-665), which provides for preservation of significant archaeological sites.

The field work was performed by John Schooley, assistant archaeologist, of the Division of Conservation Archaeology on August 22, 1978, under the provisions of a Jicarilla Tribal Council Resolution passed on February 2, 1978. Also present in the field were: Mr. Joe McKinney of Achinson Construction; Mr. B.E. Anderson of Continental Oil Company; and Mr. Fred Kerr and Rich Weaver of Kerr Land Surveying.

Field Procedures

The requested archaeological clearance survey of the proposed well pads and access roads was inspected on foot and the area was covered in a criss-cross fashion. In addition to the search for historic /prehistoric artifacts and features, information pertaining to the environmental setting was described.

Survey

The requested archaeological survey involved nine well pads and associated access roads on lands under the jurisdiction of the Jicarilla Apache Tribe. For specific details of location, please see the attached topographic maps and the paragraph descriptions below.

Jicarilla 30-13

Legal Description: 450' F/SL, 990' F/EL, Section 31, T 25N, R 4W, N.M.P.M., Rio Arriba County, New Mexico.

Map Source: U.S.G.S. 7.5' Otero Store Quadrangle.

Area Surveyed: 300'x 200' (well pad), 900'x 20' (access road).

Land Jurisdiction: Jicarilla Apache Tribe.

Description: The proposed well pad is located in a valley bottom. The terrain is flat with a 2° slope to the southwest. The soil is a sandy loam, approximately 60% exposed. The vegetation consists of sagebrush (Artemisia tridentata), blue grama (Bouteloua gracilis), prickly pear (Opuntia spp.), and various herbs and grasses. There is evidence of cattle grazing. The proposed access road originates from an existing road and proceeds west approximately 900 feet.

Cultural Materials: No cultural materials were noted.

Recommendations: Archaeological clearance is recommended.

Jicarilla 30-#14

Legal Description: 2310' F/NL, 990' F/EL, Section 31, T 25N, R 4W, N.M.P.M., Rio Arriba County, New Mexico.

Map Source: U.S.G.S. 7.5' Otero Store Quadrangle.

Area Surveyed: 300'x 200' (well pad), 1000'x 20' (access road).

Land Jurisdiction: Jicarilla Apache Tribe.

Description: The proposed well pad is located on the western slope of a hillside. The terrain has an open exposure and a 5° slope. The soil is a sandy loam with approximately 40% exposure. The vegetation is primarily tumbleweed (Salsola kali) with sagebrush, blue grama, and various grasses and herbs. A pinyon grove covers the hilltop immediately east of the well location. Grazing is evident. The access road proceeds northwest from an existing road approximately 800 feet.

Cultural Materials: A brown quartzite flake 50mm x 20mm x 10mm and two small white chalcedony waste flakes were noted in small erosional gullies which transect the access road approximately 400 feet southeast of the proposed pad. Upon extensive search of the area upland of the proposed access road, no site was located.

Cultural Significance: These artifacts appear to be derived from downslope washing from a site not in the area of the proposed construction.

Topographic map of the Ojitos area. The map features a grid with horizontal lines labeled 4023, 4024, 4025, and 4027, and vertical lines labeled 96, 97, and 98. Contour lines are drawn across the map, with elevations such as 6746, 6775, 6780, 6797, 6820, 6829, 6843, 6857, 6882, and 6915. A dashed line runs diagonally from the bottom left to the top right, labeled 'Ojitos'. A solid line is labeled 'Ojitos'. Handwritten annotations include 'J30 #13', 'J30 #14', 'J30 #15', 'J30 #17', and 'ENM 10205'. The map is titled 'OJITOS' and 'ENM 10205'.



NEW MEXICO

UNITED STATES
DEPARTMENT OF THE INTERIOR
GEOLOGICAL SURVEY

SUNDRY NOTICES AND REPORTS ON WELLS

(Do not use this form for proposals to drill or to deepen or plug back to a different reservoir. Use Form 9-331-C for such proposals.)

1. oil ☒ well gas ☐ well other ☐
2. NAME OF OPERATOR
CONTINENTAL OIL COMPANY
3. ADDRESS OF OPERATOR
P. O. Box 460, Hobbs, N.M. 88240
4. LOCATION OF WELL (REPORT LOCATION CLEARLY. See space 17 below.)
AT SURFACE: 450' FSL & 990' FEL
AT TOP PROD. INTERVAL:
AT TOTAL DEPTH:

16. CHECK APPROPRIATE BOX TO INDICATE NATURE OF NOTICE, REPORT, OR OTHER DATA

REQUEST FOR APPROVAL TO:

TEST WATER SHUT-OFF ☐
FRACTURE TREAT ☐
SHOOT OR ACIDIZE ☐
REPAIR WELL ☐
PULL OR ALTER CASING ☒
MULTIPLE COMPLETE ☐
CHANGE ZONES ☐
ABANDON* ☐
(other) ☐

SUBSEQUENT REPORT OF:

☐
☐
☐
☐
☐
☐
☐
☐

5. LEASE
CONTRACT NO. 41
6. IF INDIAN, ALLOTTEE OR TRIBE NAME
JICARILLA APACHE
7. UNIT AGREEMENT NAME
8. FARM OR LEASE NAME
JICARILLA - 30
9. WELL NO.
13
10. FIELD OR WILDCAT NAME
W. Lindrith Gallup Dakota
11. SEC., T., R., M., OR BLK. AND SURVEY OR AREA
SEC. 31 T 25N R 4W
12. COUNTY OR PARISH
RIO ARriba
13. STATE
N.M.
14. API NO.
15. ELEVATIONS (SHOW DF, KDB, AND WD)
6823' GR

(NOTE: Report results of multiple completion or zone change on Form 9-330.)

17. DESCRIBE PROPOSED OR COMPLETED OPERATIONS (Clearly state all pertinent details, and give pertinent dates, including estimated date of starting any proposed work. If well is directionally drilled, give subsurface locations and measured and true vertical depths for all markers and zones pertinent to this work.)*

IT is proposed to change the casing program for "Application for Permit to Drill" subject well FROM 1000' of 8 5/8" 24# csg TO 500' of 8 5/8" 24# csg.



Subsurface Safety Valve: Manu. and Type _____ Ft.

18. I hereby certify that the foregoing is true and correct

SIGNED W. R. Dutton TITLE Admin Supv DATE 1-10-79

(This space for Federal or State office use)

APPROVED BY _____
CONDITIONS OF APPROVAL, IF ANY:

TITLE _____ DATE _____

USGS Durango S
BEA
MJJ
E. D. L. S.

*See Instructions on Reverse Side

RECEIVED
JAN 15 1979
U. S. GEOLOGICAL SURVEY
DURANGO, COLO.