

NEW MEXICO OIL CONSERVATION COMMISSION
WELL LOCATION AND ACREAGE DEDICATION PLAT

Form C-102
Supersedes C-128
Effective 1-1-65

All distances must be from the outer boundaries of the Section.

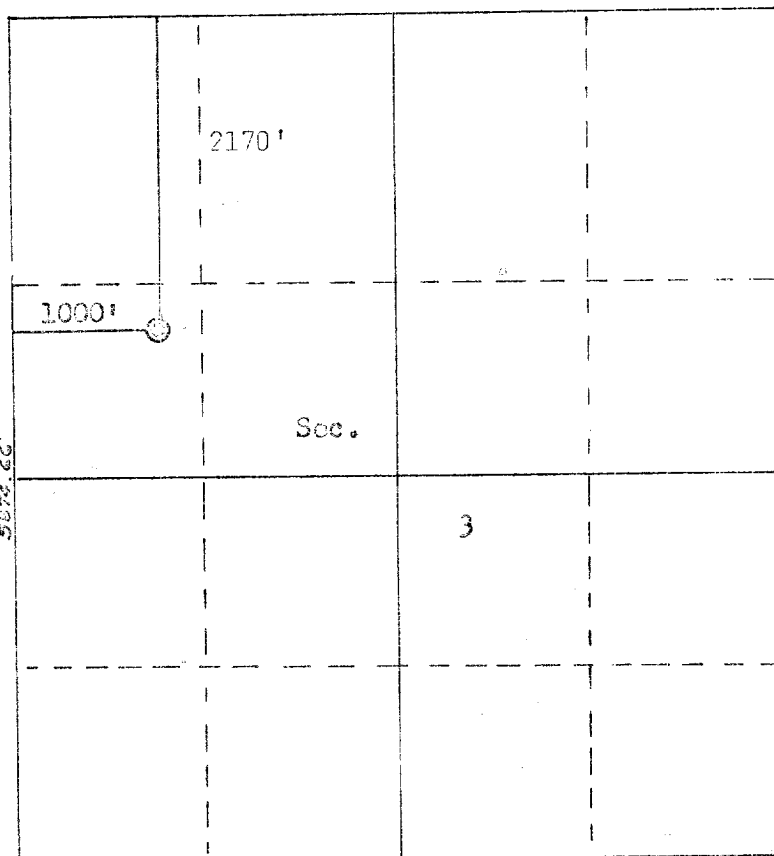
Operator PETRO-LEWIS CORPORATION		Lease RUDDOCK		Well No. 7
Unit Letter E	Section 3	Township 25N	Range 30	County Rio Arriba
Actual Footage Location of Well:				
2170 feet from the North		line and 1000 feet from the West		line
Ground Level Elev. 7337	Producing Formation MESAVERDE	Pool BLANCO MESAVERDE		Dedicated Acreage 393.08 Acres

1. Outline the acreage dedicated to the subject well by colored pencil or hatchure marks on the plat below.
2. If more than one lease is dedicated to the well, outline each and identify the ownership thereof (both as to working interest and royalty).
3. If more than one lease of different ownership is dedicated to the well, have the interests of all owners been consolidated by communitization, unitization, force-pooling, etc?

☐ Yes ☐ No If answer is "yes," type of consolidation _____

If answer is "no," list the owners and tract descriptions which have actually been consolidated. (Use reverse side of this form if necessary.) _____

No allowable will be assigned to the well until all interests have been consolidated (by communitization, unitization, forced-pooling, or otherwise) or until a non-standard unit, eliminating such interests, has been approved by the Commission.



CERTIFICATION

I hereby certify that the information contained herein is true and complete to the best of my knowledge and belief.

Name

RONALD L. TARBLEY

Position

DIST. PROD. & DRILG. FRMN.

Company

PETRO-LEWIS CORPORATION

Date

JULY 22, 1979

I hereby certify that the well location shown on this plat was plotted from field notes of actual surveys made by me or under my supervision, and that the same is true and correct to the best of my knowledge and belief.

Date Signed

July 26, 1979

Registered Professional Engineer and Land Surveyor

Fred B. [Signature]

Certificate No.

3950

Scale: 1"=1320'