

UNITED STATES
DEPARTMENT OF THE INTERIOR
GEOLOGICAL SURVEY

APPLICATION FOR PERMIT TO DRILL, DEEPEN, OR PLUG BACK

1a. TYPE OF WORK DRILL ☒ DEEPEN ☐ PLUG BACK ☐b. TYPE OF WELL
OIL WELL ☒ GAS WELL ☐ OTHER ☐ SINGLE ZONE ☒ MULTIPLE ZONE ☐2. NAME OF OPERATOR
Southland Royalty Company3. ADDRESS OF OPERATOR
P. O. Drawer 570, Farmington, NM 874014. LOCATION OF WELL (Report location clearly and in accordance with any State requirements.)*
At surface 1980' FSL & 790' FEL

At proposed prod. zone

14. DISTANCE IN MILES AND DIRECTION FROM NEAREST TOWN OR POST OFFICE*
55 miles south/southwest of Dulce, New Mexico15. DISTANCE FROM PROPOSED*
LOCATION TO NEAREST
PROPERTY OR LEASE LINE, FT.
(Also to nearest drlg. unit line, if any) 660'18. DISTANCE FROM PROPOSED LOCATION*
TO NEAREST WELL, DRILLING, COMPLETED,
OR APPLIED FOR, ON THIS LEASE, FT. 2332'21. ELEVATIONS (Show whether DF, RT, GR, etc.)
7150' GR16. NO. OF ACRES IN LEASE
256019. PROPOSED DEPTH
7584'17. NO. OF ACRES ASSIGNED
TO THIS WELL
16020. ROTARY OR CABLE TOOLS
Rotary22. APPROX. DATE WORK WILL START*
October 31, 1979

23. PROPOSED CASING AND CEMENTING PROGRAM

SIZE OF HOLE	SIZE OF CASING	WEIGHT PER FOOT	SETTING DEPTH	QUANTITY OF CEMENT
12 1/4"	8 5/8"	24#	200'	165 Cu. Ft.
7 7/8"	4 1/2"	10.5#	0'-7000'	725 Cu. Ft.- 1st Stage
7 7/8"	4 1/2"	11.6#	7000'-7584'	326 Cu. Ft.- 2nd Stage

Surface formation is San Jose.

Top of Ojo Alamo sand is at 2494'.

Top of Pictured Cliffs sand is at 3144'.

Top of Point Lookout sand is at 5234'.

Fresh water mud will be used to drill from surface to Total Depth.

It is anticipated that an IES and Gr-Density log will be run at Total Depth.

No abnormal pressures or poisonous gases are anticipated in this well.

It is expected that this well will be drilled before November 31, 1979.

This depends on time required for approvals, rig availability and the weather.

Gas is dedicated.

IN ABOVE SPACE DESCRIBE PROPOSED PROGRAM: If proposal is to deepen or plug back, give data on present productive zone and proposed new productive zone. If proposal is to drill or deepen directionally, give pertinent data on subsurface locations and measured and true vertical depths. Give blowout preventer program, if any.

24.

SIGNED

TITLE District Production Manager DATE 10-2-79

(This space for Federal or State office use)

PERMIT NO.

APPROVAL DATE

APPROVED BY
CONDITIONS OF APPROVAL, IF ANY:

TITLE

OCT 4 1979
DATE

OIL CONSERVATION DIVISION

P. O. BOX 2088

SANTA FE, NEW MEXICO 87501

Form C-107
Revised 10-1-78STATE OF NEW MEXICO
ENERGY AND MINERALS DEPARTMENT

All distances must be from the outer boundaries of the Section

Operator SOUTHLAND ROYALTY COMPANY			Lease MEDIO CANYON		Well No. 5
Unit Letter I	Section 25	Township 24N	Range 4W	County Rio Arriba	
Actual Footage Location of Well: 1980 feet from the South line and 790 feet from the East line					
Ground Level Elev. 7150	Producing Formation Gallup-Dakota		Pool West Lindrith		Dedicated Acreage: 160 Acres

1. Outline the acreage dedicated to the subject well by colored pencil or hachure marks on the plat below.

2. If more than one lease is dedicated to the well, outline each and identify the ownership thereof (both as to working interest and royalty).

3. If more than one lease of different ownership is dedicated to the well, have the interests of all owners been consolidated by communitization, unitization, force-pooling, etc?

☐ Yes ☐ No If answer is "yes," type of consolidation _____

If answer is "no," list the owners and tract descriptions which have actually been consolidated. (Use reverse side of this form if necessary.) _____

No allowable will be assigned to the well until all interests have been consolidated (by communitization, unitization, forced-pooling, or otherwise) or until a non-standard unit, eliminating such interests, has been approved by the Commission.

CERTIFICATION

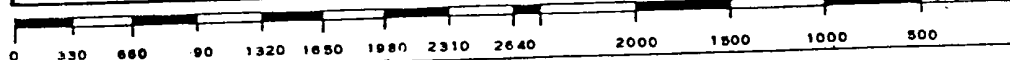
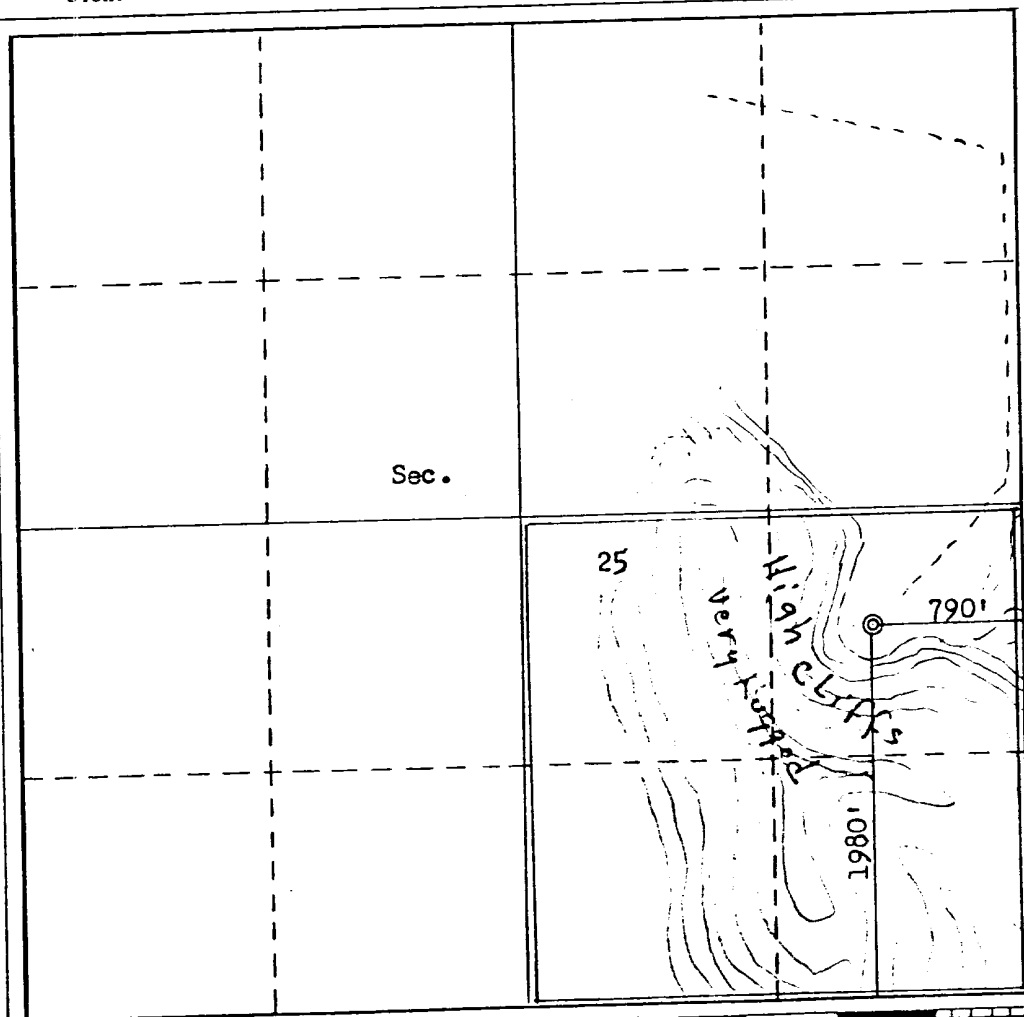
I hereby certify that the information contained herein is true and complete to the best of my knowledge and belief.

Name
District Production ManagerPosition
Southland Royalty CompanyCompany
October 2, 1979

Date

I hereby certify that the well location shown on this plat was plotted from field notes of actual surveys made by me or under my supervision, and that the same is true and correct to the best of my knowledge and belief.

Date Surveyed

September 20, 1979Registered Professional Engineer
and/or Surveyor for Oil and Gas**Fred B. Kerr Jr.**Certificate No. **3950** MEXICO**FRED B. KERR, JR.**

SOUTHLAND ROYALTY COMPANY - DRILLING SCHEDULE

M E D I O C A N Y O N # 5

1980' FSL & 790' FEL
Section 25, T24N, R4W
Rio Arriba, New Mexico

Field: West Lindrith Gallup-Dakota

Elevation: 7150' GR

<u>Formation Tops:</u>	Ojo Alamo	2494'	Gallup	6354'
	Pictured Cliffs	3144'	Greenhorn	7254'
	Chacra	3984'	Graneros	7317'
	Cliff House	4744'	Dakota	7379'
	Point Lookout	5234'	Total Depth	7584'

Logging Program: IES & GR-Density at Total Depth.

Drilling Contractor:

Tool Pusher:

SRC Representative -

SRC Answering Service 325-7391

Mud Program: Fresh water mud to 200'.

200' - 6000' low solids starch mud, 8.7 - 8.9 PPG, 34 - 38 vis,
8 - 10 cc water loss
6000' - TD reduce water loss to 5 - 6 cc.

Casing Program:

<u>Hole Size</u>	<u>Depth</u>	<u>Casing Size</u>	<u>Wt. & Grade</u>
12 1/4"	200'	8 5/8"	24# K-55
7 7/8"	0'-7000'	4 1/2"	10.5# K-55
7 7/8"	7000'-7584'	4 1/2"	11.6# K-55

Float Equipment:

8 5/8" Surface Casing - Pathfinder type "A" guide shoe.

4 1/2" Production Casing - Pathfinder type "A" guide shoe. Pathfinder self-fill flapper type float collar 1 joint off bottom. Five Pathfinder rigid stabilizers (one every other joint above shoe). Dowell stage tool at 3450' with one cement basket below and 5 stabilizers above.

Tubing:

7584' of 2 3/8", J-55, EUE, 8 Rd tubing with seating nipple one joint off bottom.

Wellhead Equipment:

8 5/8" X 10", 2000# casing head
10", 2000# X 6", 2000# tubing head with donut for 2 3/8" tubing

Cementing:

8 5/8" Surface Casing - 140 sacks (165 cu. ft.) of Class "B" with 1/4# gel flake and 3% CaCl_2 . (100% excess to circulate to surface.) WOC for 12 hours and test to 600 psi before drilling out.

4 1/2" Production Casing - FIRST STAGE: 490 sacks (725 cu. ft.) of 50/50 Poz with 6% gel and 1/4# celloflake followed by 70 sacks (83 cu. ft.) of Class "B". (25% excess to cover Mesa Verde.)
SECOND STAGE: 220 sacks (326 cu. ft.) of 50/50 Poz with 6% gel (50% excess to cover Ojo Alamo.)

Circulate through DV tool for 3 hours before cementing SECOND STAGE. Run temperature survey after 12 hours.

L. O. Van Ryan
District Production Manager

CCP/ke



Southland Royalty Company

United States Geological Survey
P. O. Box 1809
Durango, Colorado

Attention: Mr. Jerry Long

Dear Sir:

I hereby certify that I, or persons under my direct supervision, have inspected the proposed drillsite and access route; that I am familiar with the conditions which presently exist; that the statements made in this plan are, to the best of my knowledge, true and correct; and, that the work associated with the operations proposed herein be performed by Southland Royalty Company and its contractors and subcontractors in conformity with this plan and the terms and conditions under which it is approved.

Date: October 2, 1979

Name: 

Title: District Production Manager



Southland Royalty Company

October 2, 1979

United States Geological Survey
P. O. Box 1809
Durango, Colorado

Attention: Mr. Jerry Long

Dear Sir:

Enclosed please find map showing existing roads and planned access roads to Southland Royalty Company's Medio Canyon #5 well. The location of tank batteries and flow lines will be on location with well. A burn pit will be provided for disposal of trash. Cuttings, drilling fluid and produced fluids will be put into the reserve pit and properly disposed of depending on amount and type of fluids.

Contractor will furnish restroom facilities on location.

There will be no air strips or camps.

Also, enclosed is a location layout showing approximate location of rig, pits, pipe racks and cut required to build this location.

Water supply will be water holes along the La Jara Wash. All water will be transported by truck and stored on location.

The location will be restored according to Bureau of Indian Affairs standards. This work will begin when all related construction is finished.

Mr. Ross Lankford will be Southland Royalty Company's field representative supervising these operations.

Yours truly,

L. O. Van Ryan
District Production Manager

LOVR/dg



Southland Royalty Company

October 2, 1979

United States Geological Survey
P. O. Box 1809
Durango, Colorado

Attention: Blowout Preventer Plan

Dear Sir:

All drilling and completion rigs will be equipped with 6" or larger double gate hydraulic blowout preventers and a hydraulic operated closing unit with steel lines.

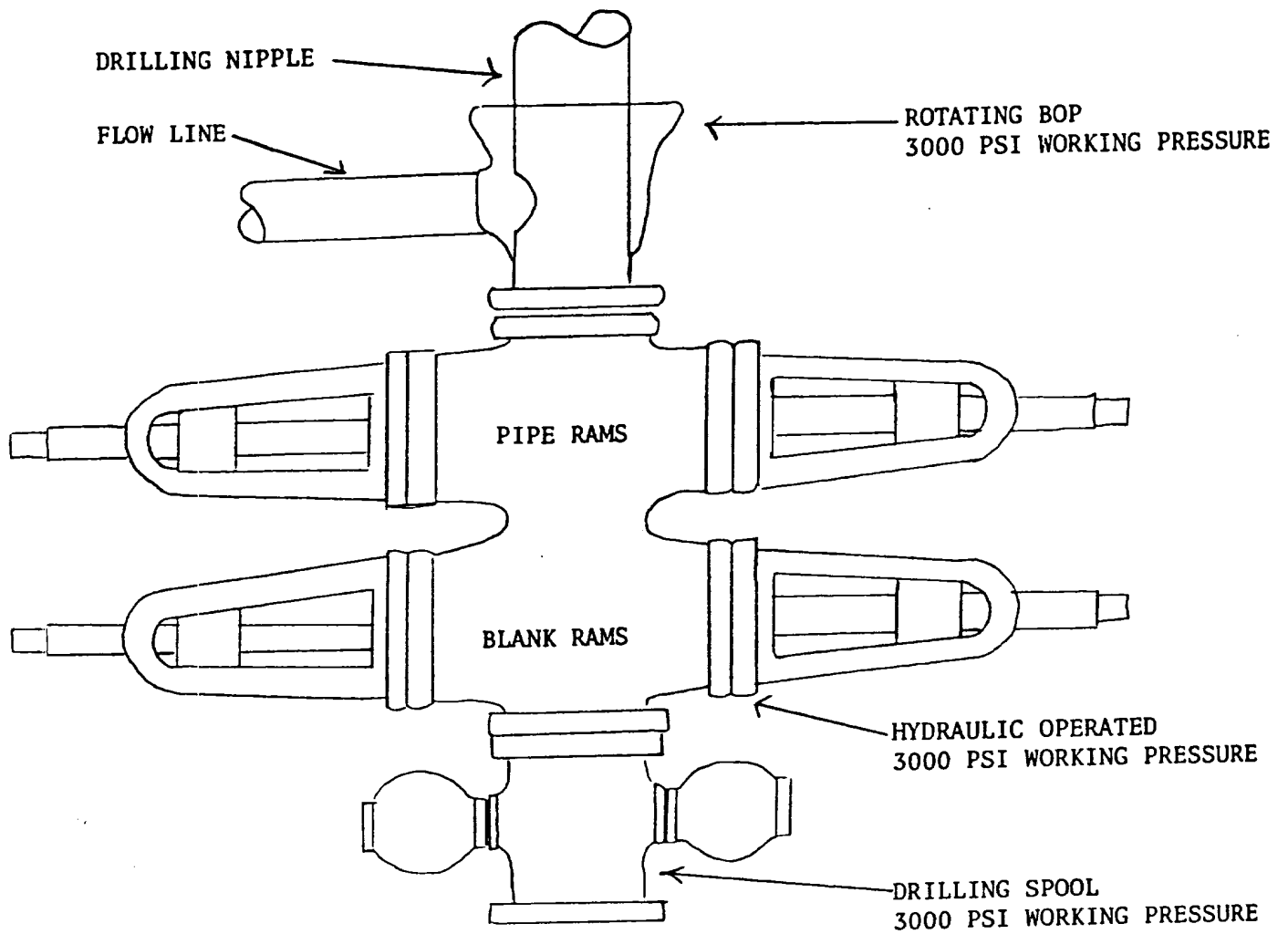
The preventer is 3000# working pressure and 6000# test.

All crews will be thoroughly trained in the operation of this preventer.
The preventer will be tested frequently enough to insure proper operation.

Yours truly,

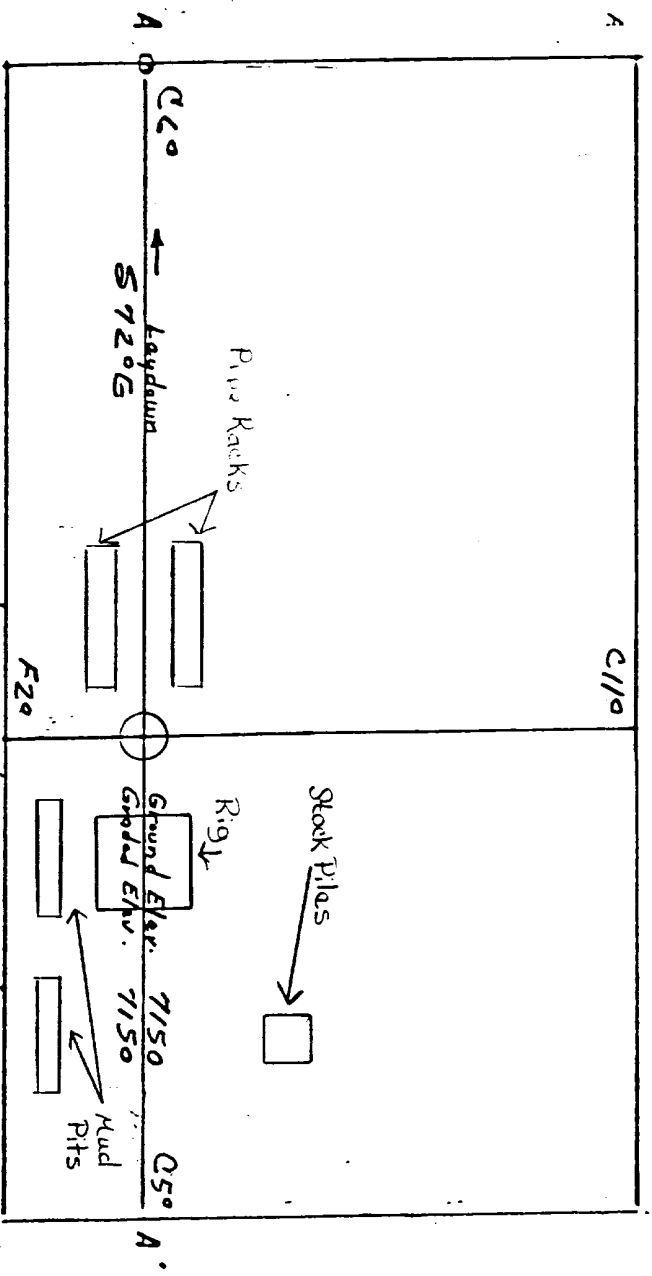
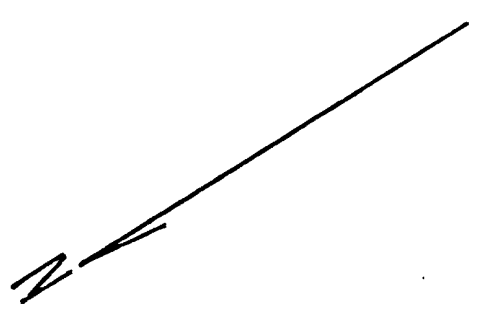
L. O. Van Ryan
District Production Manager

LOVR/dg



PREVENTERS AND SPOOLS ARE TO HAVE
THROUGH BORE OF 6" - 3000 PSI OR LARGER

LOCATION BRIDLE FOR
 Southern Railway #5 Medio Canyon
 1920 FSL 200 FSL Sec 25-24N-4W
 Rio Arriba County, N Mexico.

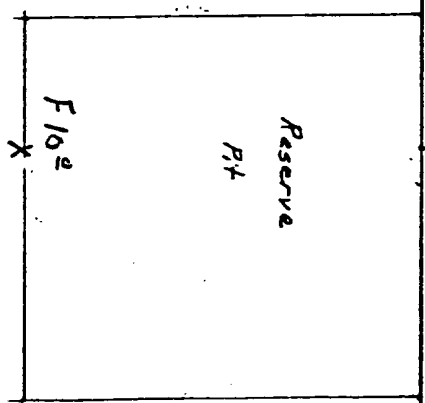


Vert. 1"=40' A-A' Horiz: 1"=100'

7160			
7150			
7140			

B-B' 1"=40' Horiz: 1"=100'

7160			
7150			
7140			



Vert: 1"=40' C-C' Horiz: 1"=100'

D-D' 1"=40' Horiz: 1"=100'
