

UNITED STATES
DEPARTMENT OF THE INTERIOR
GEOLOGICAL SURVEY

SUNDRY NOTICES AND REPORTS ON WELLS

(Do not use this form for proposals to drill or to deepen or plug back to a different reservoir. Use Form 9-331-C for such proposals.)

1. oil ☐ gas ☒ other ☐

2. NAME OF OPERATOR
Southland Royalty Company

3. ADDRESS OF OPERATOR
P.O. Drawer 570, Farmington, New Mexico 87401

4. LOCATION OF WELL (REPORT LOCATION CLEARLY. See space 17 below.)
AT SURFACE: *1980' FSL & 790' FEL*
AT TOP PROD. INTERVAL:
AT TOTAL DEPTH:

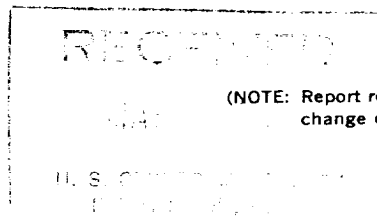
16. CHECK APPROPRIATE BOX TO INDICATE NATURE OF NOTICE, REPORT, OR OTHER DATA

REQUEST FOR APPROVAL TO:

TEST WATER SHUT-OFF ☐
FRACTURE TREAT ☐
SHOOT OR ACIDIZE ☐
REPAIR WELL ☐
PULL OR ALTER CASING ☐
MULTIPLE COMPLETE ☐
CHANGE ZONES ☐
ABANDON* ☐

SUBSEQUENT REPORT OF:

(other) *Perforation & Stimulation X*
Production Tubing Report X

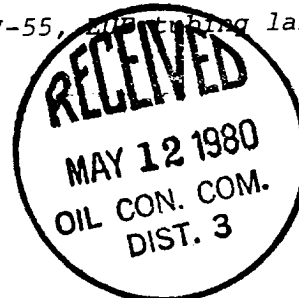


(NOTE: Report results of multiple completion or zone change on Form 9-330.)

17. DESCRIBE PROPOSED OR COMPLETED OPERATIONS (Clearly state all pertinent details, and give pertinent dates, including estimated date of starting any proposed work. If well is directionally drilled, give subsurface locations and measured and true vertical depths for all markers and zones pertinent to this work.)*

*5-04-80 Perforated the Dakota at 7306', 7311', 7316', 7324', 7329', 7415'.
Total of 6 holes. Frac'd with 40,656 gallons of slick water and
33,180# of 20/40 sand. ATP 2800 psi, AIR 11.0 BPM, ISIP 1800 psi.
Ran 240 joints (7437.15') of 2-3/8", 4.7#, J-55, 200 tubing landed
at 7448'.*

SIFT..



Subsurface Safety Valve: Manu. and Type _____ Set @ _____ Ft.

18. I hereby certify that the foregoing is true and correct

SIGNED _____ TITLE *Dist. Prod. Mgr.* DATE *May 5, 1980*

(This space for Federal or State office use)

APPROVED BY _____ TITLE _____ DATE _____
CONDITIONS OF APPROVAL, IF ANY:

ACCEPTED FOR RECORD

*See Instructions on Reverse Side

NMOCC

MAY 8 1980

FARMINGTON DISTRICT
RY *M.L. Kuchera*