

UNITED STATES
DEPARTMENT OF THE INTERIOR
GEOLOGICAL SURVEY

APPLICATION FOR PERMIT TO DRILL, DEEPEN, OR PLUG BACK

1a. TYPE OF WORK

DRILL ☒DEEPEN ☐PLUG BACK ☐

b. TYPE OF WELL

OIL
WELL ☒GAS
WELL ☒OTHER ☐SINGLE
ZONE ☐MULTIPLE
ZONE ☒

2. NAME OF OPERATOR

ARCO Oil and Gas Company

Division of Atlantic Richfield Company

3. ADDRESS OF OPERATOR

Suite 501

1860 Lincoln Street, Denver, Colorado 80295

4. LOCATION OF WELL (Report location clearly and in accordance with any State requirements.)*

At surface
1850 F/EL & 2150 F/SL Sec. 5 -24N-4W (NW,SE)

At proposed prod. zone

Same

14. DISTANCE IN MILES AND DIRECTION FROM NEAREST TOWN OR POST OFFICE*

See NTL-6

15. DISTANCE FROM PROPOSED*

LOCATION TO NEAREST
PROPERTY OR LEASE LINE, FT. 1850'
(Also to nearest drlg. unit line, if any)

16. NO. OF ACRES IN LEASE

2611.20

17. NO. OF ACRES ASSIGNED
TO THIS WELL

160

18. DISTANCE FROM PROPOSED LOCATION*

TO NEAREST WELL, DRILLING, COMPLETED, 1250'
OR APPLIED FOR, ON THIS LEASE, FT.

19. PROPOSED DEPTH

7430'

20. ROTARY OR CABLE TOOLS

Rotary

21. ELEVATIONS (Show whether DF, RT, GR, etc.)

6735' GR (Ungraded)

22. APPROX. DATE WORK WILL START*

When approved appl. rec'd
from District Engineer

23.

PROPOSED CASING AND CEMENTING PROGRAM

SIZE OF HOLE	SIZE OF CASING	WEIGHT PER FOOT	SETTING DEPTH	QUANTITY OF CEMENT
12-1/2"	8-5/8" OD	24#	±300'	300 sx. (cmt. to surf)
7-7/8"	5-1/2" OD	15.5 & 17#	T. D.	550 sx.

Propose to drill well to a depth sufficient to test the Dakota Formation, setting surface casing and if productive setting production casing. If both formations are productive (Gallup and Dakota) will perforate, test and treat if necessary and commingle production.

Pursuant to NTL-6, attached are: Certified Location Plat
Drilling Plan with attachment
Surface Use and Operations Plan with attachments.

IN ABOVE SPACE DESCRIBE PROPOSED PROGRAM: If proposal is to deepen or plug back, give data on present productive zone and proposed new productive zone. If proposal is to drill or deepen directionally, give pertinent data on subsurface locations and measured and true vertical depths. Give blowout preventer program, if any.

24.

SIGNED



TITLE

Operations Manager

DATE

11-19-79

(This space for Federal or State office use)

PERMIT NO.

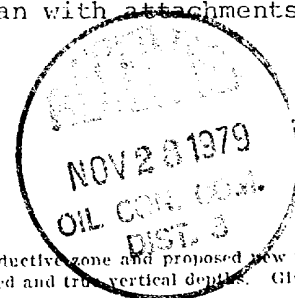
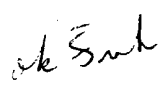
APPROVAL DATE

APPROVED BY

TITLE

DATE

CONDITIONS OF APPROVAL, IF ANY:



NOV 28 1979

R 4 W

537

31

32

33

T 25 N

T 24 N

6939

6861

6786

6807

109

6775

6780

6860

112

6643

105

103

6742

6737

6813

6800

114

6740

107

113

6708

104

A P A C H E

6794

108

116

106

6682

6663

R 4 W

Canada

E R V A T I O N

JICARILLA "H" LEASES

W. LINDRITH GALLUP - DAKOTA POOL

RIO ARRIBA Co., NEW MEXICO

6660

6663

6645

6702

6671

6687

6800

6841

6900

PIPELINE

2
7
7
7

NEW MEXICO OIL CONSERVATION COMMISSION
WELL LOCATION AND ACREAGE DEDICATION PLAT

Form C-102
Supersedes C-128
Effective 1-1-65

All distances must be from the outer boundaries of the Section.

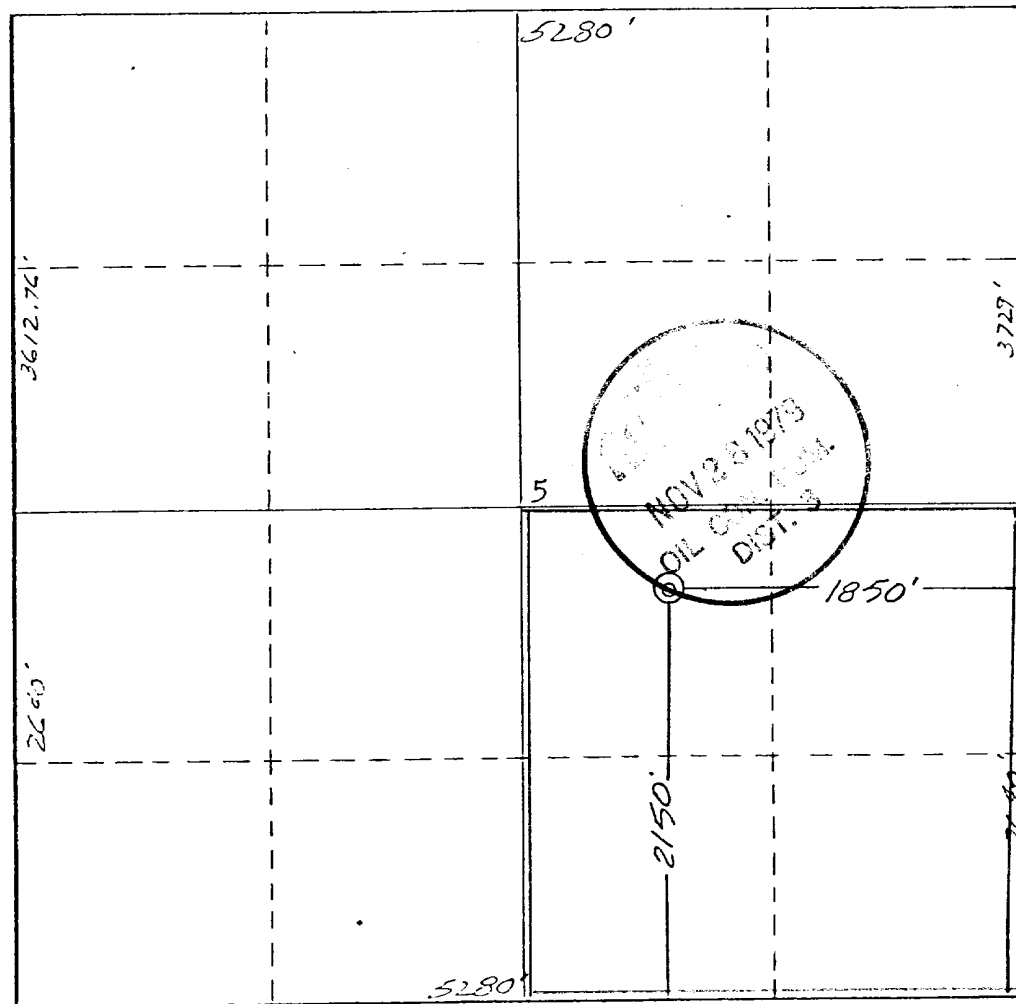
Operator ARCO OIL AND GAS COMPANY			Lease JICARILLA APACHE "H"		Well No. 111
Unit Letter J	Section 5	Township 24 NORTH	Range 4 WEST	County RIO ARriba	
Actual Footage Location of Well: 2150 feet from the SOUTH line and 1850 feet from the EAST line					
Ground Level Elev. 6737	Producing Formation Gallup - Dakota		Pool W. Lindrith	Dedicated Acreage: 160 Acres	

1. Outline the acreage dedicated to the subject well by colored pencil or hachure marks on the plat below.
2. If more than one lease is dedicated to the well, outline each and identify the ownership thereof (both as to working interest and royalty).
3. If more than one lease of different ownership is dedicated to the well, have the interests of all owners been consolidated by communitization, unitization, force-pooling, etc?

☐ Yes ☐ No If answer is "yes," type of consolidation _____

If answer is "no," list the owners and tract descriptions which have actually been consolidated. (Use reverse side of this form if necessary.) _____

No allowable will be assigned to the well until all interests have been consolidated (by communitization, unitization, forced-pooling, or otherwise) or until a non-standard unit, eliminating such interests, has been approved by the Commission.



CERTIFICATION

I hereby certify that the information contained herein is true and complete to the best of my knowledge and belief.

OE Satchum for wpr

Name

Operations Manager

Position

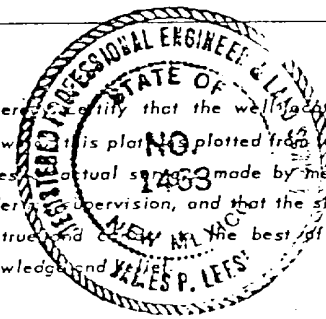
ARCO Oil & Gas Company

Company

11/13/79

Date

I hereby certify that the well location shown on this plat is plotted from field notes, actual survey made by me or under my supervision, and that the same is true and correct to the best of my knowledge and belief.



Date Surveyed

26 May 1979

Registered Professional Engineer and/or Land Surveyor

James P. Leese
James P. Leese

Certificate No.

1463

