

UNITED STATES
DEPARTMENT OF THE INTERIOR
GEOLOGICAL SURVEY

APPLICATION FOR PERMIT TO DRILL, DEEPEN, OR PLUG BACK

1a. TYPE OF WORK

DRILL ☒DEEPEN ☐PLUG BACK ☐

b. TYPE OF WELL

OIL
WELL ☐GAS
WELL ☒

OTHER

SINGLE
ZONE ☐MULTIPLE
ZONE ☒

2. NAME OF OPERATOR

Elliott Oil Company

3. ADDRESS OF OPERATOR

Box 1355, Roswell, N.M. 88201

4. LOCATION OF WELL (Report location clearly and in accordance with any State requirements.)*

At surface

1520' FNL/790' FWL

At proposed prod. zone

same

14. DISTANCE IN MILES AND DIRECTION FROM NEAREST TOWN OR POST OFFICE*

10 miles NW Lindrith

15. DISTANCE FROM PROPOSED*

LOCATION TO NEAREST
PROPERTY OR LEASE LINE, FT.
(Also to nearest drlg. unit line, if any)

790'

16. NO. OF ACRES IN LEASE

1640

1420

17. NO. OF ACRES ASSIGNED
TO THIS WELL

320

18. DISTANCE FROM PROPOSED LOCATION*
TO NEAREST WELL, DRILLING, COMPLETED,
OR APPLIED FOR, ON THIS LEASE, FT.Only Pictured
Cliffs on lease.

19. PROPOSED DEPTH

8250

20. ROTARY OR CABLE TOOLS

Rotary

21. ELEVATIONS (Show whether DF, RT, GR, etc.)

7382 Gr.

22. APPROX. DATE WORK WILL START*

August 1, 1980

23. PROPOSED CASING AND CEMENTING PROGRAM

SIZE OF HOLE	SIZE OF CASING	WEIGHT PER FOOT	SETTING DEPTH	QUANTITY OF CEMENT
12-1/4	9-5/8"	32.3	200	100 SX
8-3/4	7"	23	6240	500 SX
6-1/4	4-1/2"	11.6	6100-8250	330 SX

Propose to cement intermediate casing to cover Ojo Alamo. Gas-drilled to TD and run 4 1/2" liner. Mesaverde and Dakota ~~drilling operations and operations~~ if productive. Gas is not committed.

SUBJECT TO COMPLIANCE WITH ATTACHED
"GENERAL REQUIREMENTS"

Estimated Formation Tops:	Ojo Alamo	1930	Mancos	6090
	Fruitland	3650	Casing Point	6240
	Pictured Cliffs	3760	Gallup	6950
	Lewis	3820	Greenhorn	7900
	Cliff House	5440	Graneros	7960
	Point Lookout	5940	Dakota	8000
			T.D.	8250

IN ABOVE SPACE DESCRIBE PROPOSED PROGRAM: If proposal is to deepen or plug back, give data on present productive zone and proposed new productive zone. If proposal is to drill or deepen directionally, give pertinent data on subsurface location and measured and true vertical depths. Give blowout preventer program, if any.

24.

SIGNED

Curtis J. Little

TITLE

Agent

DATE

7-11-80

(This space for Federal or State office use)

PERMIT NO.

APPROVAL DATE

APPROVED BY

TITLE

DATE

CONDITIONS OF APPROVAL, IF ANY:

*See Instructions On Reverse Side

All distances must be from the outer boundaries of the Section.

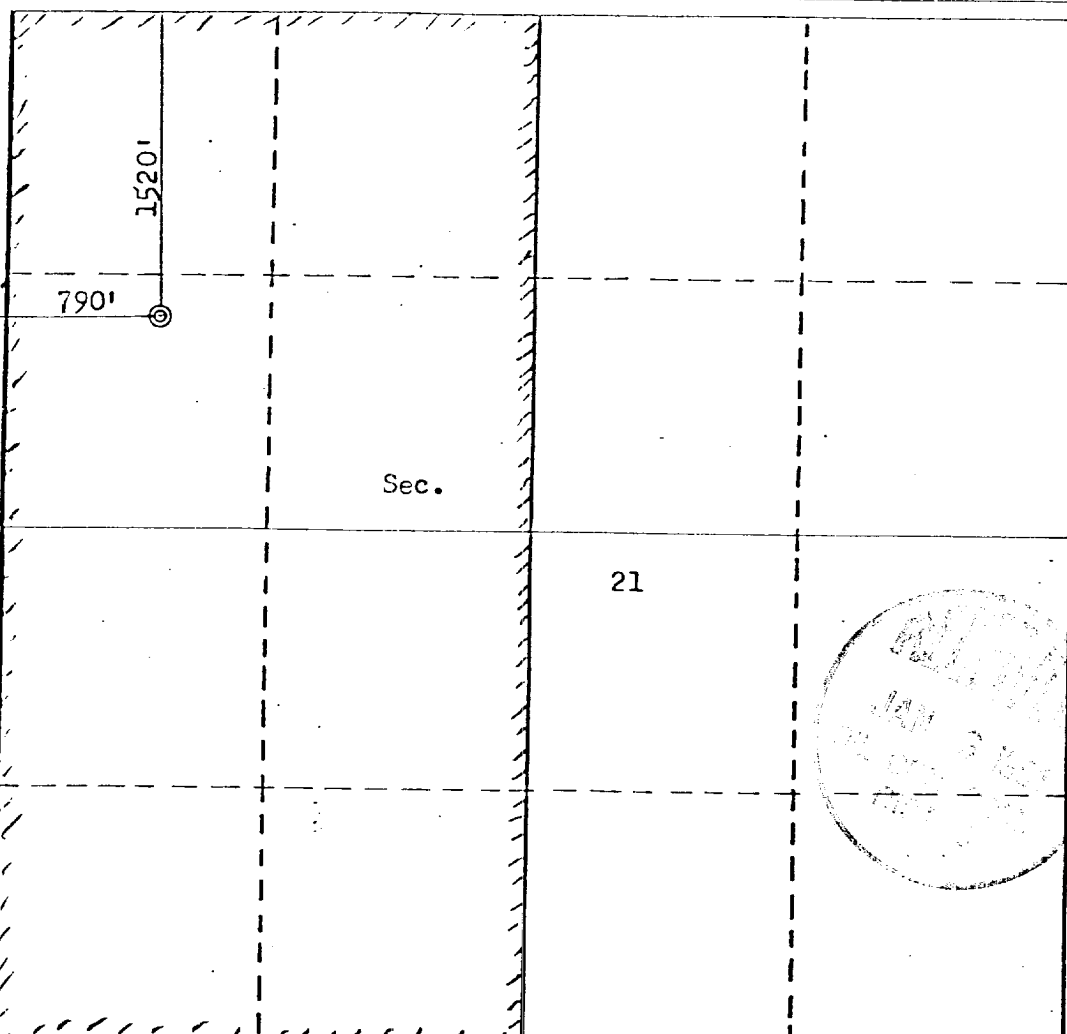
Operator ELLIOTT OIL COMPANY			Lease ORA		Well No. 1
Unit Letter E	Section 21	Township 25N	Range 3W	County Rio Arriba	
Actual Footage Location of Well: 1520 feet from the North line and 790 feet from the West line					
Ground Level Elev. 7382	Producing Formation Dakota		Pool Basin Dakota	Dedicated Acreage: 320 Acres	

1. Outline the acreage dedicated to the subject well by colored pencil or hachure marks on the plat below.
2. If more than one lease is dedicated to the well, outline each and identify the ownership thereof (both as to working interest and royalty).
3. If more than one lease of different ownership is dedicated to the well, have the interests of all owners been consolidated by communitization, unitization, force-pooling, etc?

☐ Yes ☐ No If answer is "yes," type of consolidation _____

If answer is "no," list the owners and tract descriptions which have actually been consolidated. (Use reverse side of this form if necessary.) _____

No allowable will be assigned to the well until all interests have been consolidated (by communitization, unitization, forced-pooling, or otherwise) or until a non-standard unit, eliminating such interests, has been approved by the Commission.



CERTIFICATION

I hereby certify that the information contained herein is true and complete to the best of my knowledge and belief.

Name

CURTIS J. LITTLE

Position

Agent

Company

ELLIOTT OIL COMPANY

Date

June 20, 1980

I hereby certify that the well location shown on this plat was plotted from field notes of actual surveys made by me or under my supervision, and that the same is true and correct to the best of my knowledge and belief.

Date Surveyed

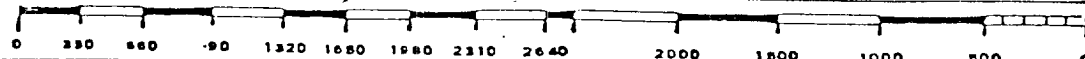
June 18, 1980

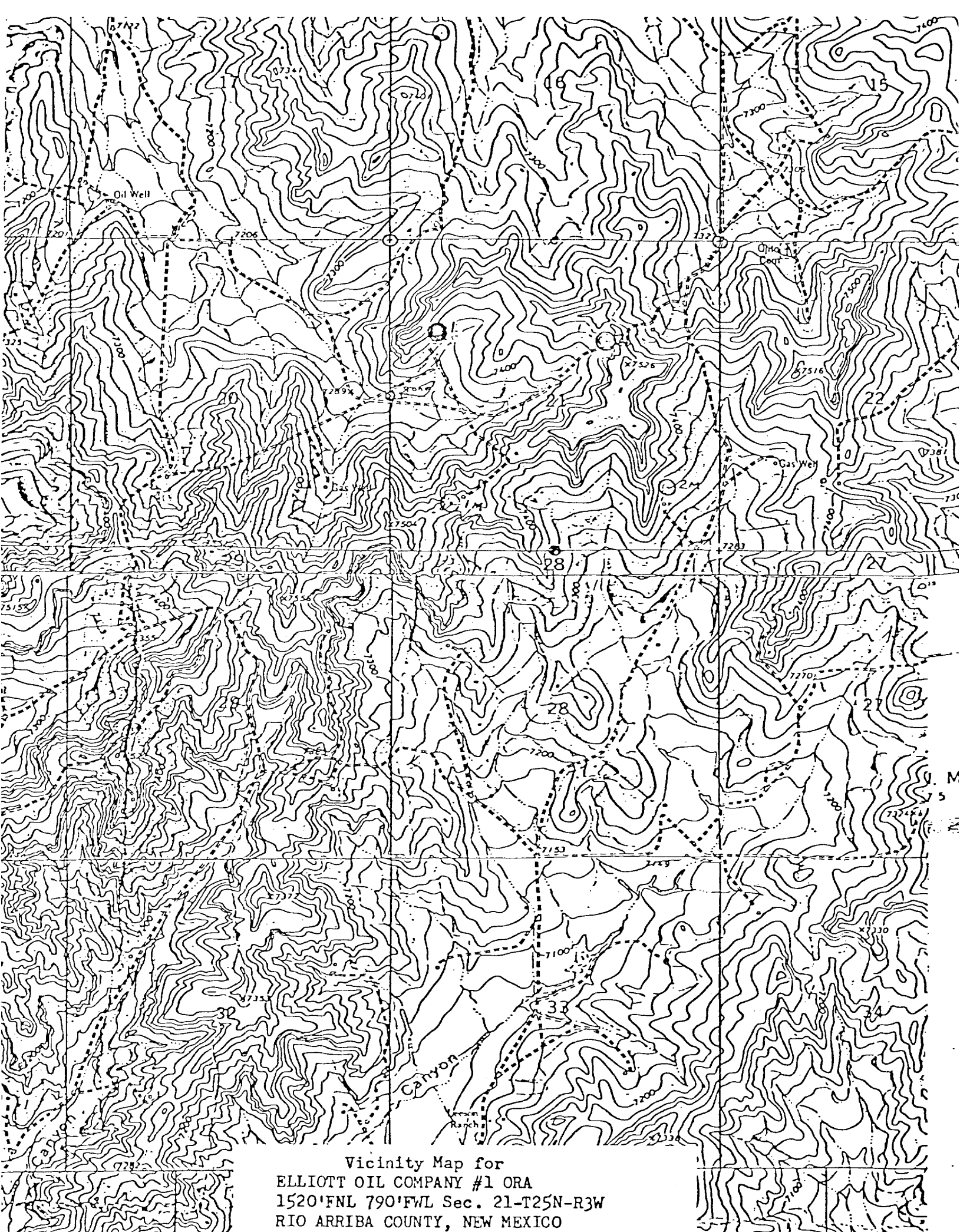
Registered Professional Engineer and/or Land Surveyor

Fred Barker Jr.

Contract No.

3950





Vicinity Map for
ELLIOTT OIL COMPANY #1 ORA
1520'FNL 790'FWL Sec. 21-T25N-R3W
RIO ARriba COUNTY, NEW MEXICO

WELL CONTROL PLAN

ELLIOTT OIL COMPANY
#1 Ora
1520'FNL 790'FWL
SW/4 NW/4 Section 21, T-25-N R-3-W
Rio Arriba County, New Mexico

1. Surface Casing: 9-5/8" 32.3#/ft. set at 200' and cemented with pump and plug method back to surface.
2. Casinghead Flange: 10-3/4" series 900, 3000 psi WP equivalent casinghead with two 2" 1500 psi L.P. outlets.
3. Blowout Preventor: a 10" 3000 psig W.P. double gate hydraulic Shaffer BOP (or equivalent) with drill pipe rams and blind rams. All fill, kill and choke lines will be minimum of 2" 2000 psi working pressure. The rams will be closed daily and checked for proper operation.
4. Auxillary Equipment: a) Drill pipe floats will be allowed at contractor's discretion; b) Visual and manual monitoring of mud system will be maintained.
5. Anticipated bottom hole pressure is less than 3200 psi at 8250'. Gradient of .277 psi/ft. 9.2 lb. mud program gives 3940 psi hydrostatic head.
6. Well will be drilled with water base mud system with 9.0-9.4 ppg weight 35-45 seconds viscosity to T.D.

Curtis J. Little

PLAN OF DEVELOPMENT

ELLIOTT OIL COMPANY

#1 Ora

1520'FNL 790'FWL

SW/4 NW/4 Section 21, T-25-N R-3-W

Rio Arriba County, New Mexico

1. Existing Roads (see enclosed topo map).
2. Planned access road: will use existing access road approximately 10' in width constructed to prevent erosion (see proposed road on topo map).
3. Location of tank battery and production facilities: if this well is productive, it would be gas; therefore, the facilities would be the wellhead, tanks for produced water and condensate, if any, separator and gas line to the well. The tanks and separator would be set within 150' of the well and on location and the gas line would run adjacent and parallel to road.
5. Location and type of water supply: Water will be hauled by truck from private water supply in the area.
6. Source of construction materials: all construction material such as gravel, sand, timbers, etc. will be purchased and hauled to the location. No water, sand or gravel will be used from this land.
7. Methods for handling waste disposal:
 - 1) Cuttings will be buried 3' below the surface.
 - 2) Drilling fluids will be left in a fenced, open pit to evaporate.
 - 3) Produced oil or condensate (if any) will be stored in a tank.
 - 4) Portable toilet to be provided.
 - 5) Trash will be burned in burn pit.
 - 6) After pit area is sufficiently dry, cuttings will be pushed into pit and sub-soil will be placed on any remaining fluid and cuttings, then top soil, if any, will be placed over both pit and location area.
8. Ancillary facilities: No camps or airstrips will be used.
9. Wellsite layout: Top soil, if any, will be stockpiled and reused. Pits will not be lined.
10. Plans for restoration of surface: upon completion of well, all pits will be backfilled and top soil replaced and recontoured back to the original terrain. Pits will be backfilled as soon as they evaporate enough to permit such work. To protect livestock or wild game, pits will be fenced, and maintained until

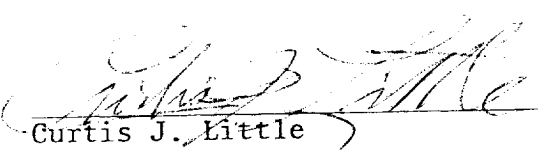
clean-up operations are commenced. Should oil accumulate on the pit, it will be removed and buried 6' deep or overhead flagging will be employed to protect wildlife.

11. Other information:

- 1) Topography - drill site and access low valley profile.
- 2) Vegetation - sparse grass and sagebrush with moderate growth of pinon trees.
- 3) Land use - land is used for grazing with no reservoir or water on this site. There are no known archeological, cultural, or historical sites on the site.

12. Lessee's or Operator's representative: CURTIS J. LITTLE Home: 327-6673
Offc: 327-6176

13. I hereby certify that I, or persons under my direct supervision, have inspected the proposed drillsite and access rout; that I am familiar with the conditions which presently exist; that the statements made in this plan are, to the best of my knowledge, true and correct; and, that the work associated with the operations proposed herein will be performed by Four Corners Drilling Company and its contractors and sub-contractors in conformity with this plan and the terms and conditions under which it is proposed.


Curtis J. Little
P. O. Box 2487
Farmington, N.M. 87401

FOUR CORNERS DRILLING CO.

P. O. BOX 1067
702 E. BROADWAY
FARMINGTON, NEW MEXICO 87401

TELEPHONE: (505) 327-1122

