

UNITED STATES
DEPARTMENT OF THE INTERIOR
GEOLOGICAL SURVEY

SUNDRY NOTICES AND REPORTS ON WELLS

(Do not use this form for proposals to drill or to deepen or plug back to a different reservoir. Use Form 9-331-C for such proposals.)

1. oil ☒ gas ☐ other ☐
well well

2. NAME OF OPERATOR

DOME PETROLEUM CORP.

3. ADDRESS OF OPERATOR

3600 Southside River Rd., Farmington, NM 87401

4. LOCATION OF WELL (REPORT LOCATION CLEARLY. See space 17 below.)

AT SURFACE: 1750' FNL, 950' FEL

AT TOP PROD. INTERVAL:

AT TOTAL DEPTH:

16. CHECK APPROPRIATE BOX TO INDICATE NATURE OF NOTICE, REPORT, OR OTHER DATA

REQUEST FOR APPROVAL TO:

TEST WATER SHUT-OFF ☐

FRACTURE TREAT ☐

SHOOT OR ACIDIZE ☐

REPAIR WELL ☐

PULL OR ALTER CASING ☐

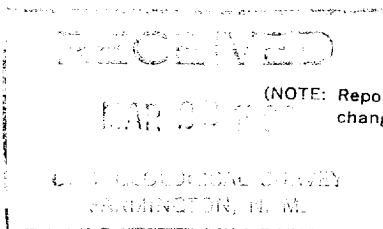
MULTIPLE COMPLETE ☐

CHANGE ZONES ☐

ABANDON* ☐

(other) Spud & Set Surface Casing

SUBSEQUENT REPORT OF:



(NOTE: Report results of multiple completion or zone change on Form 9-330.)

17. DESCRIBE PROPOSED OR COMPLETED OPERATIONS (Clearly state all pertinent details, and give pertinent dates, including estimated date of starting any proposed work. If well is directionally drilled, give subsurface locations and measured and true vertical depths for all markers and zones pertinent to this work.)*

Spudded 12 1/4" hole at 6:30 p.m., 3/18/82. Drilled to 380'. Ran 8 jts. 8 5/8", 24#, K55, ST&C Casing. Casing landed at 376' K.B. Cemented with 275 sx. Class "B" Cement with 3% CaCl. Plug down at 2:45 a.m., 3/19/82. Circulated cement.



Subsurface Safety Valve: Manu. and Type _____ Set @ _____ Ft.

18. I hereby certify that the foregoing is true and correct

SIGNED H. D. Hoffmingsworth TITLE Area Prod. Supt. DATE March 19, 1982

(This space for Federal or State office use)

APPROVED BY _____ TITLE _____ DATE _____
CONDITIONS OF APPROVAL, IF ANY:

ACCEPTED FOR RECORD

*See Instructions on Reverse Side

MAR 23 1982

U.S. GEOLOGICAL SURVEY

BY SN

NMOCC