

UNITED STATES  
DEPARTMENT OF THE INTERIOR  
GEOLOGICAL SURVEY

## APPLICATION FOR PERMIT TO DRILL, DEEPEN, OR PLUG BACK

## 1a. TYPE OF WORK

DRILL ☒DEEPEN ☐PLUG BACK ☐

## b. TYPE OF WELL

OIL  
WELL ☐GAS  
WELL ☒

OTHER

SINGLE  
ZONE ☒MULTIPLE  
ZONE ☐

## 2. NAME OF OPERATOR

Amoco Production Company

## 3. ADDRESS OF OPERATOR

501 Airport Drive, Farmington, New Mexico 87401

## 4. LOCATION OF WELL (Report location clearly and in accordance with any State requirements.)\*

At surface

1090' FSL x 920' FEL Section 4-T25N-R4W

At proposed prod. zone Same

## 14. DISTANCE IN MILES AND DIRECTION FROM NEAREST TOWN OR POST OFFICE\*

Approximately 20 miles west of Lindrieth, New Mexico

## 15. DISTANCE FROM PROPOSED\*

LOCATION TO NEAREST  
PROPERTY OR LEASE LINE, FT.  
(Also to nearest drlg. unit line, if any)

920'

## 18. DISTANCE FROM PROPOSED LOCATION\*

TO NEAREST WELL, DRILLING COMPLETED,  
OR APPLIED FOR, ON THIS LEASE, FT.

Approx. 350'

## 21. ELEVATIONS (Show whether DF, RT, GR, etc.)

7225'

## 23. PROPOSED CASING AND CEMENTING PROGRAM

SIZE OF HOLE	SIZE OF CASING	WEIGHT PER FOOT	SETTING DEPTH	QUANTITY OF CEMENT
12-1/4"	8-5/8"	24# (K-55)	400' <del>300'</del>	280
7-7/8"	4-1/2"	11.6# (K-55)	8265'	210

280 sx Class "B" w/2% CaCl<sub>2</sub> - circ.  
Stage 1 - 518 sx-Class "B" neat, 50:50  
POZ, 6% gel, 2# med tuf plug/sx  
and .8% fluid loss additive.  
Tail in 100 sx class "B" neat -  
circ.  
Stage 2 - 915 sx - class "B" neat,  
65:35 POZ, 6% gel, 2# med tuf  
plug /sx and .8% fluid loss  
additive. Tail in 100 sx Class  
"B" neat - circ.

Amoco proposes to drill the above well to further develop the  
Basin Dakota reservoir. The well will be drilled from 0-300'  
using native spud mud. The well will then be drilled from  
300'-TD using a low solids non-dispersed mud system. Completion  
design will be based on open hole logs. Copies of all logs will  
be filed upon completion. Amoco's standard blowout prevention  
will be employed; see Attachment. The gas produced from this  
well is dedicated to Gas Company of New Mexico.

IN ABOVE SPACE DESCRIBE PROPOSED PROGRAM: If proposal is to deepen or plug back, give data on present productive zone and proposed new productive zone. If proposal is to drill or deepen directionally, give pertinent data on subsurface locations and measured and true vertical depths. Give blowout preventer program, if any.

24.

SIGNED Wayne L. Peterson TITLE District Engineer

DATE

MAR 30 1982

(This space for Federal or State office use)

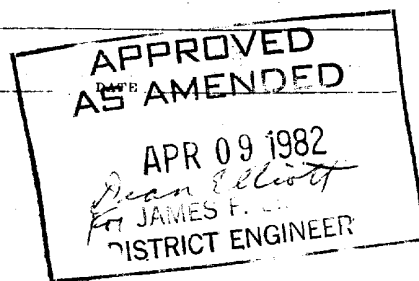
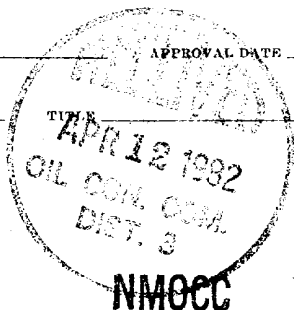
PERMIT NO.

APPROVAL DATE

APPROVED BY

CONDITIONS OF APPROVAL, IF ANY:

27



All distances must be from the outer boundaries of the Section.

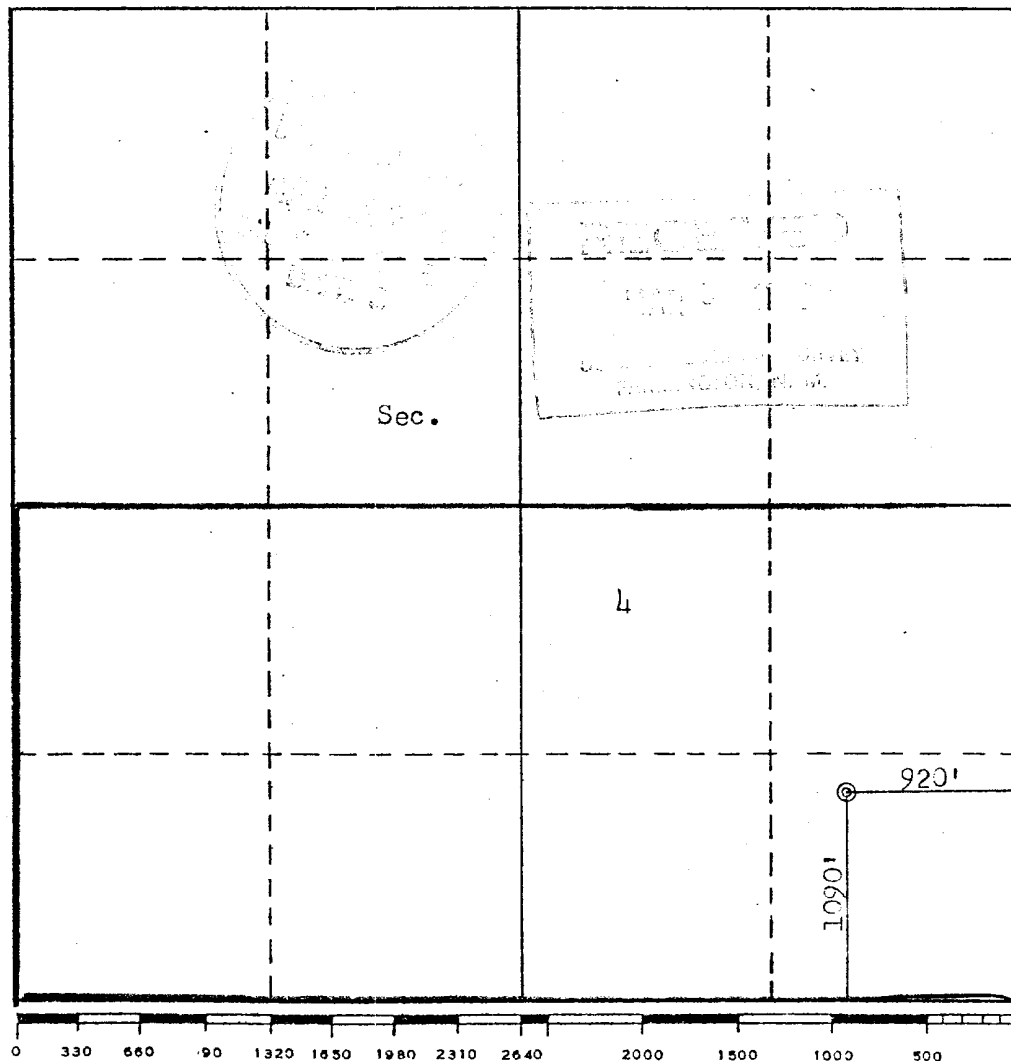
Operator AMOCO PRODUCTION COMPANY			Lease JICARILLA APACHE TRIBAL 122		Well No. 2
Unit Letter P	Section 4	Township 25N	Range 4W	County Rio Arriba	
Actual Footage Location of Well: 1090 feet from the South line and 920 feet from the East line					
Ground Level Elev. 7225	Producing Formation Dakota		Pool Basin Dakota		Dedicated Acreage 320 Acres

1. Outline the acreage dedicated to the subject well by colored pencil or hatchure marks on the plat below.
2. If more than one lease is dedicated to the well, outline each and identify the ownership thereof (both as to working interest and royalty).
3. If more than one lease of different ownership is dedicated to the well, have the interests of all owners been consolidated by communitization, unitization, force-pooling, etc?

☐ Yes ☐ No If answer is "yes," type of consolidation \_\_\_\_\_

If answer is "no," list the owners and tract descriptions which have actually been consolidated. (Use reverse side of this form if necessary.) \_\_\_\_\_

No allowable will be assigned to the well until all interests have been consolidated (by communitization, unitization, forced-pooling, or otherwise) or until a non-standard unit, eliminating such interests, has been approved by the Commission.



CERTIFICATION

I hereby certify that the information contained herein is true and complete to the best of my knowledge and belief.

Wayne L. Peterson  
Name

Wayne L. Peterson  
Position

District Engineer  
Company

Amoco Production Company  
Date

MAR 30 1982

I hereby certify that the well location shown on this plat was plotted from field notes of actual surveys made by me or under my supervision, and that the same is true and correct to the best of my knowledge and belief.

Date Surveyed

February 1982  
Registered Professional Engineer  
and/or Land Surveyor

Fred B. Kerr Jr.  
Certificate No.

3950



Vicinity Map for  
AMOCO PRODUCTION CO. #2 JICARILLA APACHE TRIBAL 122  
1090'FSL 920'FEL Sec. 4-T25N-R4W  
RIO ARriba COUNTY, NEW MEXICO