

UNITED STATES  
DEPARTMENT OF THE INTERIOR  
GEOLOGICAL SURVEY

30-039-22929

## APPLICATION FOR PERMIT TO DRILL, DEEPEN, OR PLUG BACK

## 1a. TYPE OF WORK

DRILL ☒DEEPEN ☐PLUG BACK ☐

## b. TYPE OF WELL

OIL  
WELL ☐GAS  
WELL ☒

OTHER

SINGLE  
ZONE ☒MULTIPLE  
ZONE ☐

## 2. NAME OF OPERATOR

Getty Oil Company

## 3. ADDRESS OF OPERATOR

Box 3360, Casper, Wyoming 82602

## 4. LOCATION OF WELL (Report location clearly and in accordance with any State requirements\*)

At surface

990' FSL 970' FWL Section 27, T25N, R5W

At proposed prod. zone

## 14. DISTANCE IN MILES AND DIRECTION FROM NEAREST TOWN OR POST OFFICE\*

## 15. DISTANCE FROM PROPOSED\*

LOCATION TO NEAREST  
PROPERTY OR LEASE LINE, FT.  
(Also to nearest drlg. unit line, if any)

## 18. DISTANCE FROM PROPOSED LOCATION\*

TO NEAREST WELL, DRILLING, COMPLETED,  
OR APPLIED FOR, ON THIS LEASE, FT.

## 21. ELEVATIONS (Show whether DF, RT, GR, etc.)

6676 GR

## 23.

## PROPOSED CASING AND CEMENTING PROGRAM

SIZE OF HOLE	SIZE OF CASING	WEIGHT PER FOOT	SETTING DEPTH	QUANTITY OF CEMENT
12 1/4	8 5/8	24.0	300	* 250 sx to circulate to surface.
7 7/8	4 1/2	9.5 & 10.5	7300	* 1550 sx to circulate to surface.

\* Cement volumes will depend on volume calculated from hole caliper.

Thirteen Point Surface Use Plan attached.

Gas is dedicated.

IN ABOVE SPACE DESCRIBE PROPOSED PROGRAM: If proposal is to deepen or plug back, give data on present productive zone and proposed new productive zone. If proposal is to drill or deepen directionally, give pertinent data on subsurface locations and measured and true vertical depths. Give blowout preventer program, if any.

24.

SIGNED



TITLE District Superintendent

DATE

3/12/82

(This space for Federal or State office use)

PERMIT NO.

APPROVAL DATE

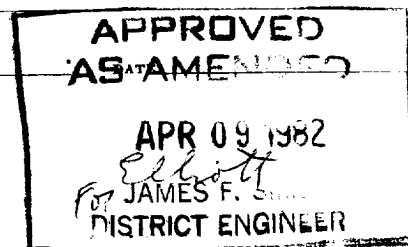
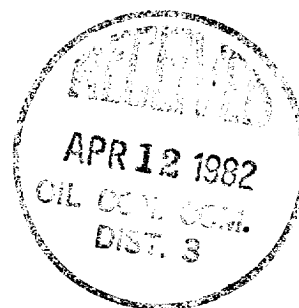
APPROVED BY

TITLE

CONDITIONS OF APPROVAL, IF ANY:



NMOCC



All distances must be from the outer boundaries of the Section.

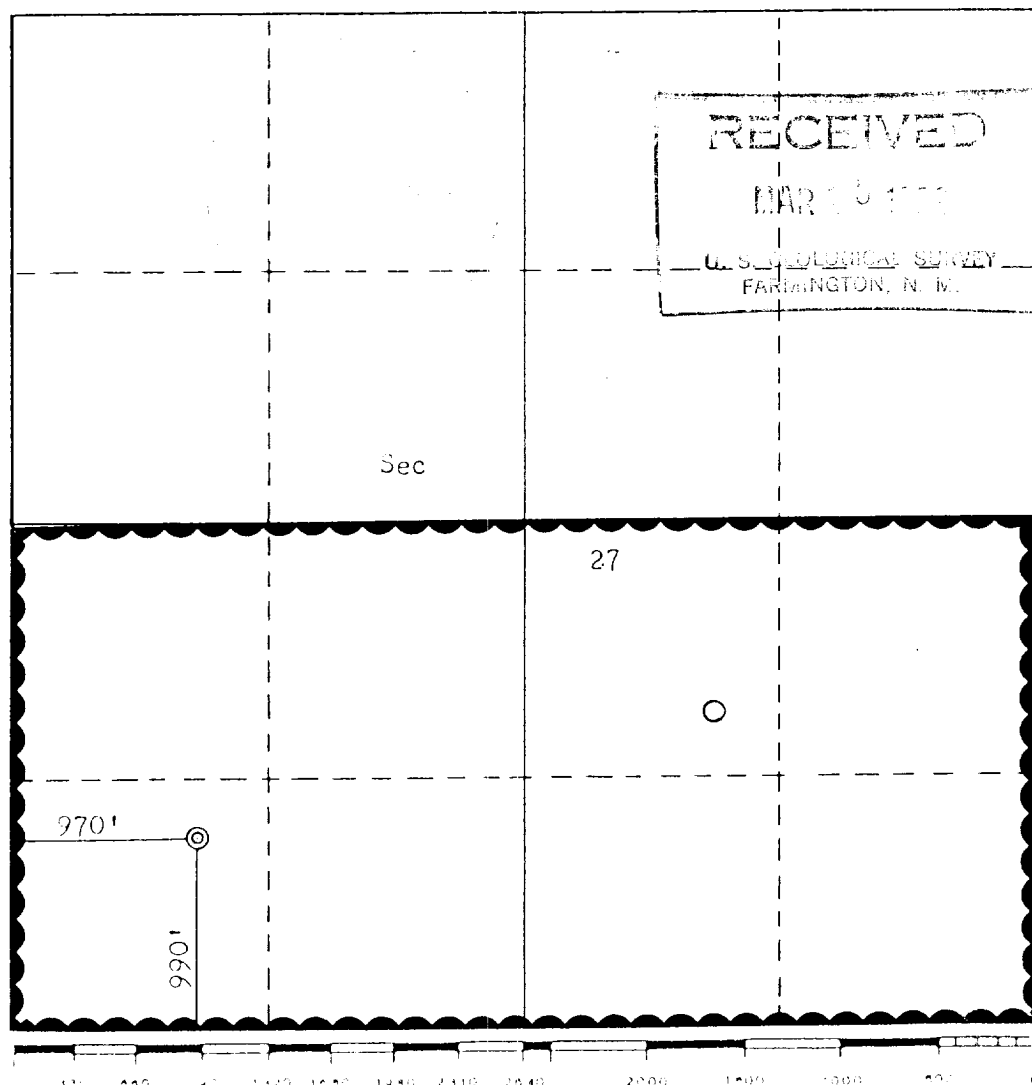
Operator <b>Getty Oil Company</b>		Lease <b>Jicarilla C</b>		Well No. <b>6E</b>	
Unit Letter <b>M</b>	Section <b>27</b>	Township <b>25N</b>	Range <b>5W</b>	County <b>Rio Arriba</b>	
Actual Footage Location of Well:					
970 feet from the <b>South</b>		line and <b>970</b>		feet from the <b>West</b> line	
Ground Level Elev. <b>6676</b>	Producing Formation <b>Dakota</b>		Pool <b>Basin-Dakota</b>		Dedicated Acreage: <b>320</b> Acres

1. Outline the acreage dedicated to the subject well by colored pencil or hatchure marks on the plat below.
2. If more than one lease is dedicated to the well, outline each and identify the ownership thereof (both as to working interest and royalty).
3. If more than one lease of different ownership is dedicated to the well, have the interests of all owners been consolidated by communitization, unitization, force-pooling, etc?

☐ Yes ☐ No If answer is "yes," type of consolidation \_\_\_\_\_

If answer is "no," list the owners and tract descriptions which have actually been consolidated. (Use reverse side of this form if necessary.) \_\_\_\_\_

No allowable will be assigned to the well until all interests have been consolidated (by communitization, unitization, forced-pooling, or otherwise) or until a non-standard unit, eliminating such interests, has been approved by the Commission.



## CERTIFICATION

I hereby certify that the information contained herein is true and complete to the best of my knowledge and belief.

Name Mr. Kendrick  
Position Agent  
Company Getty Oil Company

Date March 12, 1982

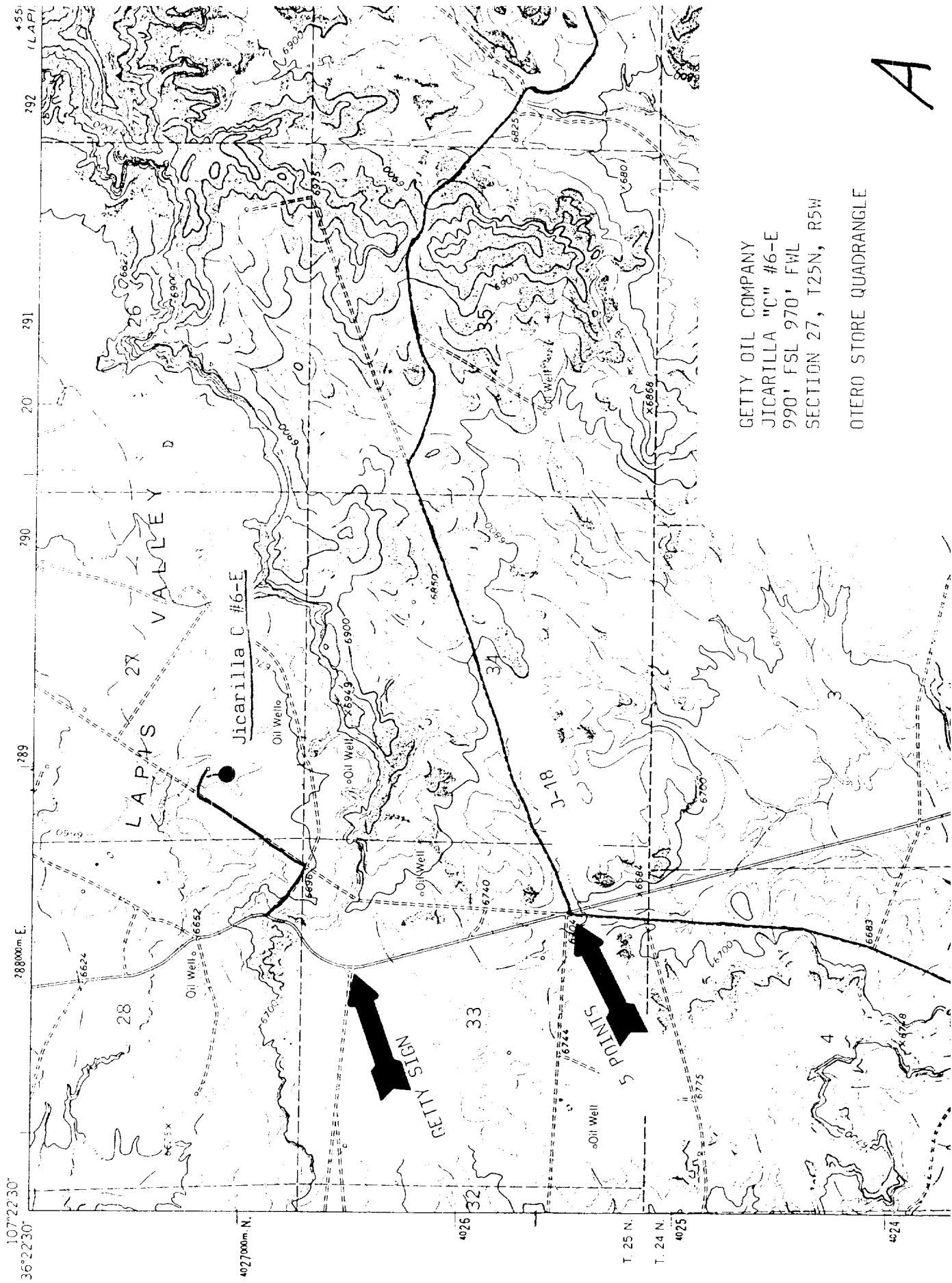
I hereby certify that the well location shown on this plat was plotted from field notes of actual surveys made by me or under my supervision, and that the same is true and correct to the best of my knowledge and belief.

Date Surveyed March 11, 1982  
Registered Professional Engineer and/or Land Surveyor  
Fred B. Kerr Jr.

Certificate No. 3950

4556 IV NW  
GONZALES MESA

UNITED STATES  
DEPARTMENT OF THE INTERIOR  
GEOLOGICAL SURVEY



GETTY OIL COMPANY  
JICARILLA "C" #6-E  
990' FSL 970' FWL  
SECTION 27, T25N, R5W  
OTERO STORE QUADRANGLE

A