

UNITED STATES
DEPARTMENT OF THE INTERIOR
GEOLOGICAL SURVEY

30-039-22930

APPLICATION FOR PERMIT TO DRILL, DEEPEN, OR PLUG BACK

1a. TYPE OF WORK

DRILL ☒DEEPEN ☐PLUG BACK ☐

b. TYPE OF WELL

OIL
WELL ☐GAS
WELL ☒

OTHER

SINGLE
ZONE ☒MULTIPLE
ZONE ☐

2. NAME OF OPERATOR

Getty Oil Company

3. ADDRESS OF OPERATOR

Box 3360, Casper, Wyoming 82602

4. LOCATION OF WELL (Report location clearly and in accordance with any State requirements.)

J 1520' FSL 1850' FEL Section 28, T25N, R5W
At proposed prod. zone

14. DISTANCE IN MILES AND DIRECTION FROM NEAREST TOWN OR POST OFFICE*

15. DISTANCE FROM PROPOSED*

LOCATION TO NEAREST
PROPERTY OR LEASE LINK, FT.
(Also to nearest drlg. unit line, if any)18. DISTANCE FROM PROPOSED LOCATION*
TO NEAREST WELL, DRILLING, COMPLETED,
OR APPLIED FOR, ON THIS LEASE, FT.

21. ELEVATIONS (Show whether DF, RT, GR, etc.)

6638 GR

23.

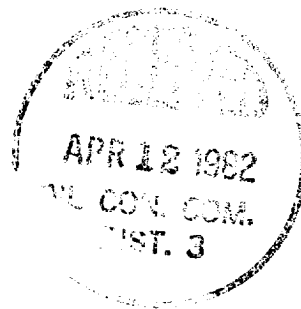
PROPOSED CASING AND CEMENTING PROGRAM

SIZE OF HOLE	SIZE OF CASING	WEIGHT PER FOOT	SETTING DEPTH	QUANTITY OF CEMENT
12 1/4	8 5/8	24.0	300	* 250 sx to circulate to surface.
7 7/8	4 1/2	9.5	3750	* 800 sx to circulate to surface.

* Cement volumes will depend on volume calculated from hole caliper.

Thirteen Point Surface Use Plan attached.

Gas is dedicated.



IN ABOVE SPACE DESCRIBE PROPOSED PROGRAM: If proposal is to deepen or plug back, give data on present productive zone and proposed new productive zone. If proposal is to drill or deepen directionally, give pertinent data on subsurface locations and measured and true vertical depths. Give blowout preventer program, if any.

24.

SIGNED

TITLE District Superintendent

DATE

3/12/82

(This space for Federal or State office use)

PERMIT NO.

APPROVAL DATE

APPROVED BY

TITLE

CONDITIONS OF APPROVAL, IF ANY:

alt

NMOCC

APPROVED
AS AMENDEDAPR 09 1982

JAMES F. SIMS
DISTRICT ENGINEER

All distances must be from the outer boundaries of the Section.

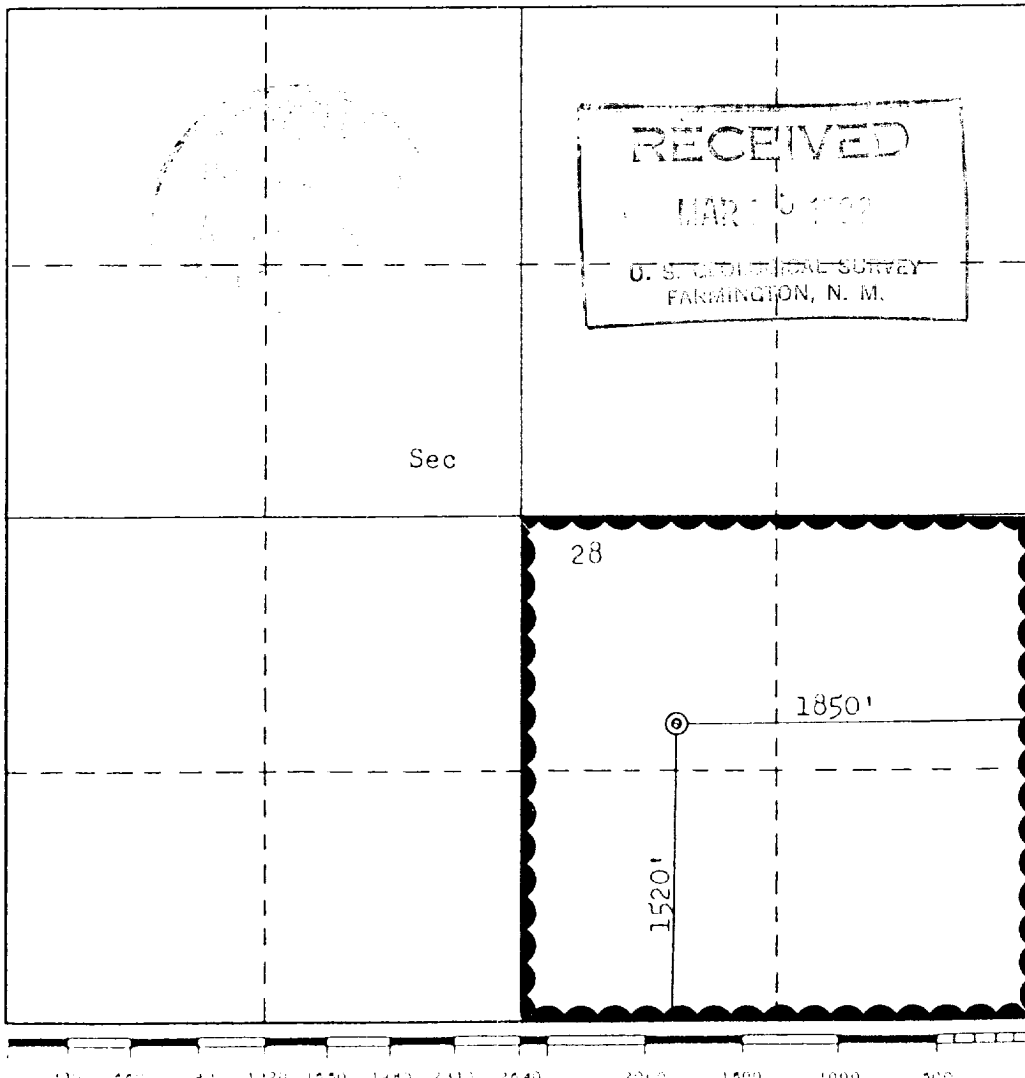
Operator Getty Oil Company			Lease Jicarilla C		Well No. 32
Unit Letter J	Section 28	Township 25N	Range 5W	County Rio Arriba	
Actual Footage Location of Well: 1520 feet from the South line and 1850 feet from the East line					
Ground Level Elev. 6638	Producing Formation Chacra		Pool Otero-Chacra		Dedicated Acreage: 1.60 Acres

1. Outline the acreage dedicated to the subject well by colored pencil or hachure marks on the plat below.
2. If more than one lease is dedicated to the well, outline each and identify the ownership thereof (both as to working interest and royalty).
3. If more than one lease of different ownership is dedicated to the well, have the interests of all owners been consolidated by communitization, unitization, force-pooling, etc?

☐ Yes ☐ No If answer is "yes," type of consolidation _____

If answer is "no," list the owners and tract descriptions which have actually been consolidated. (Use reverse side of this form if necessary.) _____

No allowable will be assigned to the well until all interests have been consolidated (by communitization, unitization, forced-pooling, or otherwise) or until a non-standard unit, eliminating such interests, has been approved by the Commission.



CERTIFICATION

I hereby certify that the information contained herein is true and complete to the best of my knowledge and belief.

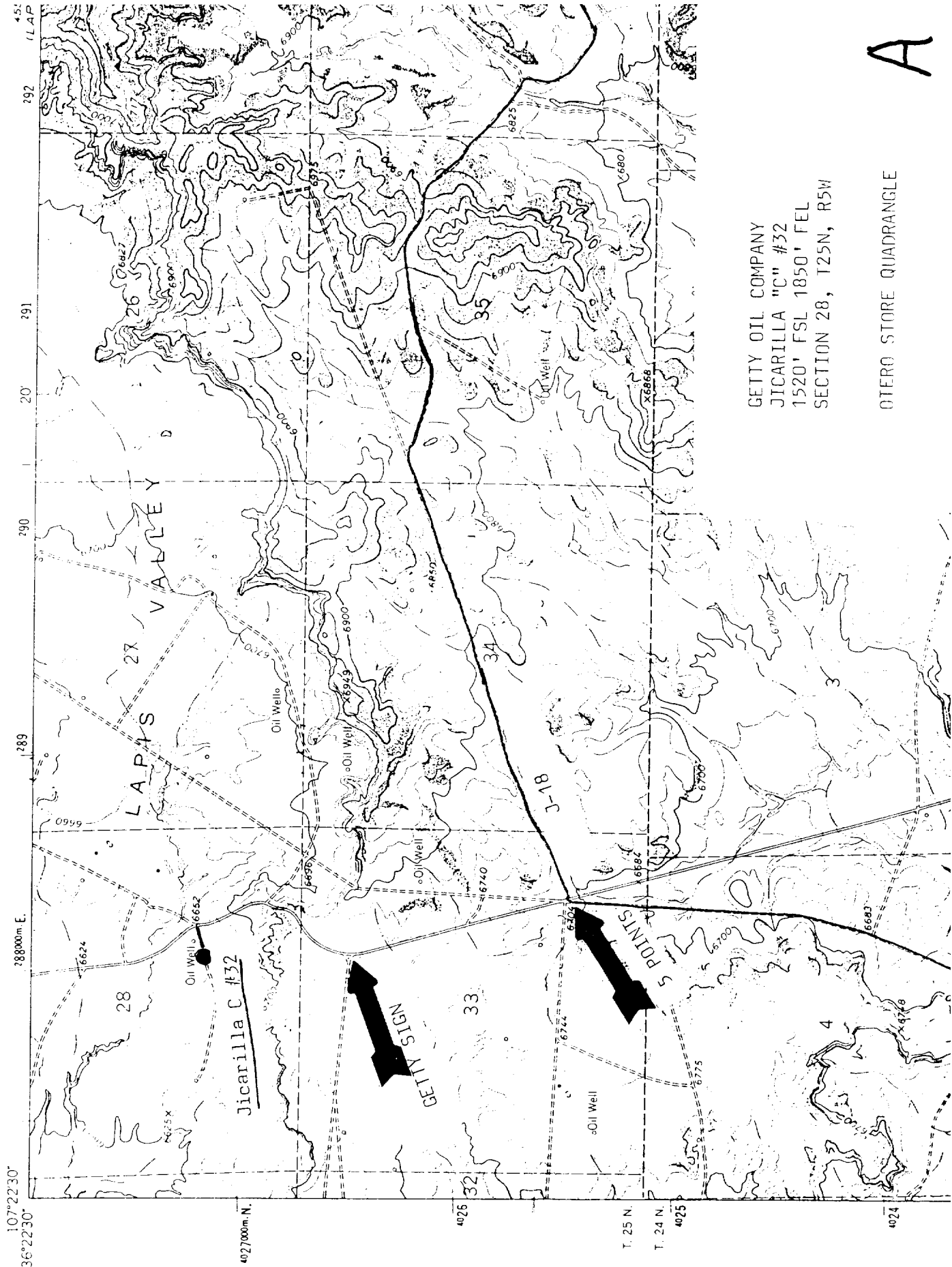
Name *W. Kendrick*
Position **Agent**
Company **Getty Oil Company**
Date **March 12, 1982**

I hereby certify that the well location shown on this plat was plotted from field notes of actual surveys made by me or under my supervision, and that the same is true and correct to the best of my knowledge and belief.

Date Surveyed **March 11, 1982**
Registered Professional Engineer and/or Land Surveyor
Fred B. Kerr Jr.
Fred B. Kerr Jr.
Certificate No. **3950**

4530 1/4 NW
GONZALES MESA

UNITED STATES
DEPARTMENT OF THE INTERIOR
GEOLOGICAL SURVEY



GETTY OIL COMPANY
JICARILLA "C" #32
1520' FSL 1850' FEL
SECTION 28, 125N, R5W

OTERO STORE QUADRANGLE

A

