

UNITED STATES
DEPARTMENT OF THE INTERIOR
GEOLOGICAL SURVEY

APPLICATION FOR PERMIT TO DRILL, DEEPEN, OR PLUG BACK

1a. TYPE OF WORK

DRILL ☒

DEEPEN ☐

PLUG BACK ☐

b. TYPE OF WELL

OIL
WELL ☐

GAS
WELL ☒

OTHER

SINGLE
ZONE ☒

MULTIPLE
ZONE ☐

2. NAME OF OPERATOR

CONOCO INC.

3. ADDRESS OF OPERATOR

P. O. Box 460, Hobbs, N.M. 88240

4. LOCATION OF WELL (Report location clearly and in accordance with any State requirements.)

At surface 990' FNL & 990' FEL

At proposed prod. zone

14. DISTANCE IN MILES AND DIRECTION FROM NEAREST TOWN OR POST OFFICE*

15. DISTANCE FROM PROPOSED*

LOCATION TO NEAREST
PROPERTY OR LEASE LINE, FT.
(Also to nearest drlg. unit line, if any)

18. DISTANCE FROM PROPOSED LOCATION*
TO NEAREST WELL, DRILLING, COMPLETED,
OR APPLIED FOR, ON THIS LEASE, FT.

21. ELEVATIONS (Show whether DF, RT, GR, etc.)

6673' GR

23.

PROPOSED CASING AND CEMENTING PROGRAM

| SIZE OF HOLE | SIZE OF CASING | WEIGHT PER FOOT | SETTING DEPTH | QUANTITY OF CEMENT |
|--------------|----------------|-----------------|---------------|--------------------|
| 12 1/4" | 8 5/8" | 24# | 300' | 210' Circulate |
| 6 1/2" | 3 1/2" | 9.3# | 2580' | 291' - 1600' |

Cover Eye Alamo

It is proposed to drill the subject well to a TD of 2580' and complete it as
a Ballard Pictured Cliffs gas well.

See attachments for 10 point well plan and 13 point Surface Use Plan.

Acreage is not dedicated.

IN ABOVE SPACE DESCRIBE PROPOSED PROGRAM: If proposal is to deepen or plug back, give data on present productive zone and proposed new productive zone. If proposal is to drill or deepen directionally, give pertinent data on subsurface locations and measured and true vertical depths. Give blowout preventer program, if any.

24.

SIGNED W. A. Butterfield

TITLE Administrative Supervisor

DATE 2/3/82

(This space for Federal or State office use)

PERMIT NO.

APPROVAL DATE

APPROVED BY

TITLE

CONDITIONS OF APPROVAL, IF ANY:

| |
|--|
| APPROVED AS AMENDED |
| DATE APR 20 1982 |
| <u>Elliot</u> JAMES F. DISTRICT ENGINEER |

*See Instructions On Reverse Side

MMS 6
R661d 2
File 1

OIL CONSERVATION DIVISION

STATE OF NEW MEXICO
ENERGY AND MINERALS DEPARTMENT

P. O. BOX 2088

SANTA FE, NEW MEXICO 87501

Form C-102
Revised 10-1-78

All distances must be from the outer boundaries of the Section.

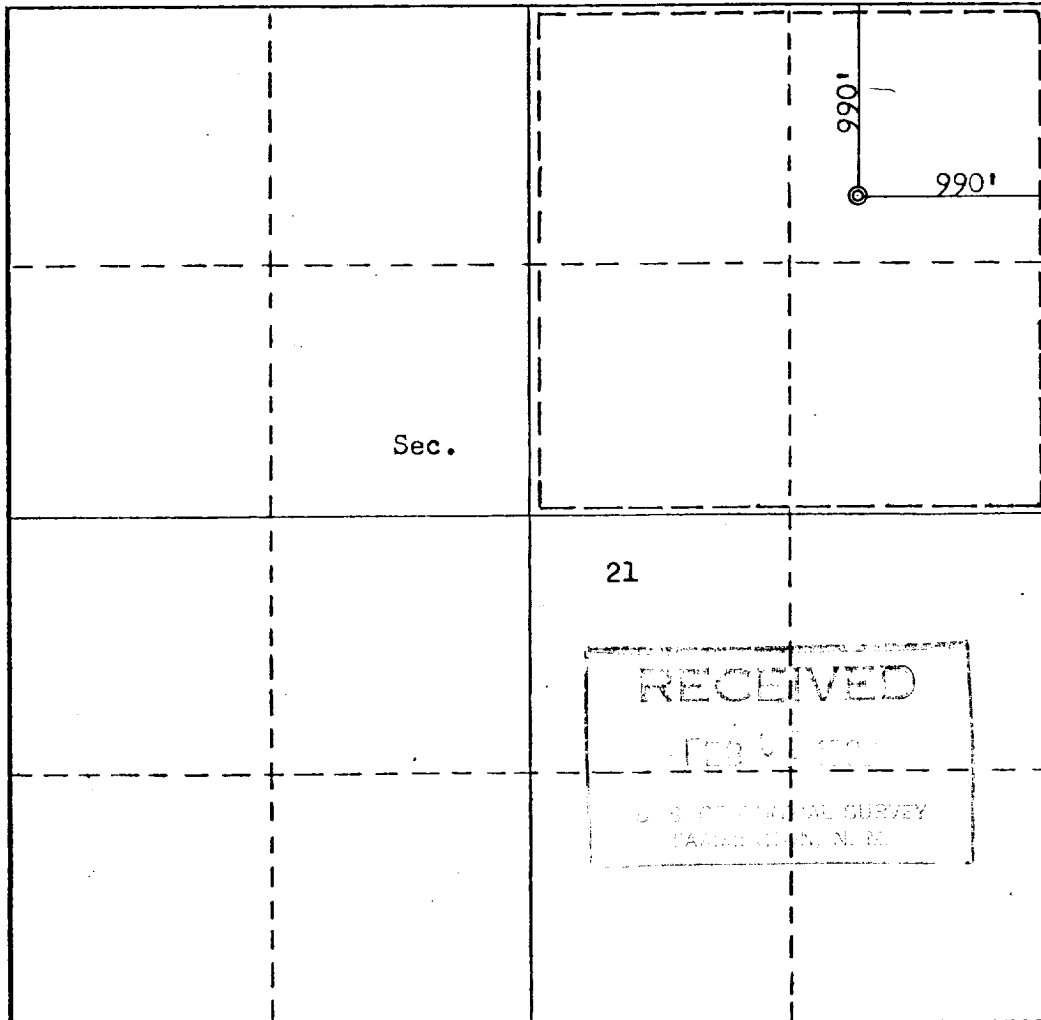
| | | | | |
|--|---|--|--|-----------------------------|
| Operator CONOCO | | Lease NE HAYNES | | Well No. 15 |
| Unit Letter A | Section 21 | Township 24N | Range 5W | County Rio Arriba |
| Actual Footage Location of Well: 990 feet from the North line and 990 feet from the East line | | | | |
| Ground Level Elev. 6673 | Producing Formation Pictured Cliffs | Pool Ballard Pictured Cliffs | Dedicated Acreage: 160 Acres | |

1. Outline the acreage dedicated to the subject well by colored pencil or hachure marks on the plat below.
2. If more than one lease is dedicated to the well, outline each and identify the ownership thereof (both as to working interest and royalty).
3. If more than one lease of different ownership is dedicated to the well, have the interests of all owners been consolidated by communitization, unitization, force-pooling, etc?

☐ Yes ☐ No If answer is "yes," type of consolidation _____

If answer is "no," list the owners and tract descriptions which have actually been consolidated. (Use reverse side of this form if necessary.) _____

No allowable will be assigned to the well until all interests have been consolidated (by communitization, unitization, forced-pooling, or otherwise) or until a non-standard unit, eliminating such interests, has been approved by the Commission.



CERTIFICATION

I hereby certify that the information contained herein is true and complete to the best of my knowledge and belief.

 Name *Wm. A. Butterfield*
 Position *Administrative Supervisor*
 Company *Conoco Inc.*

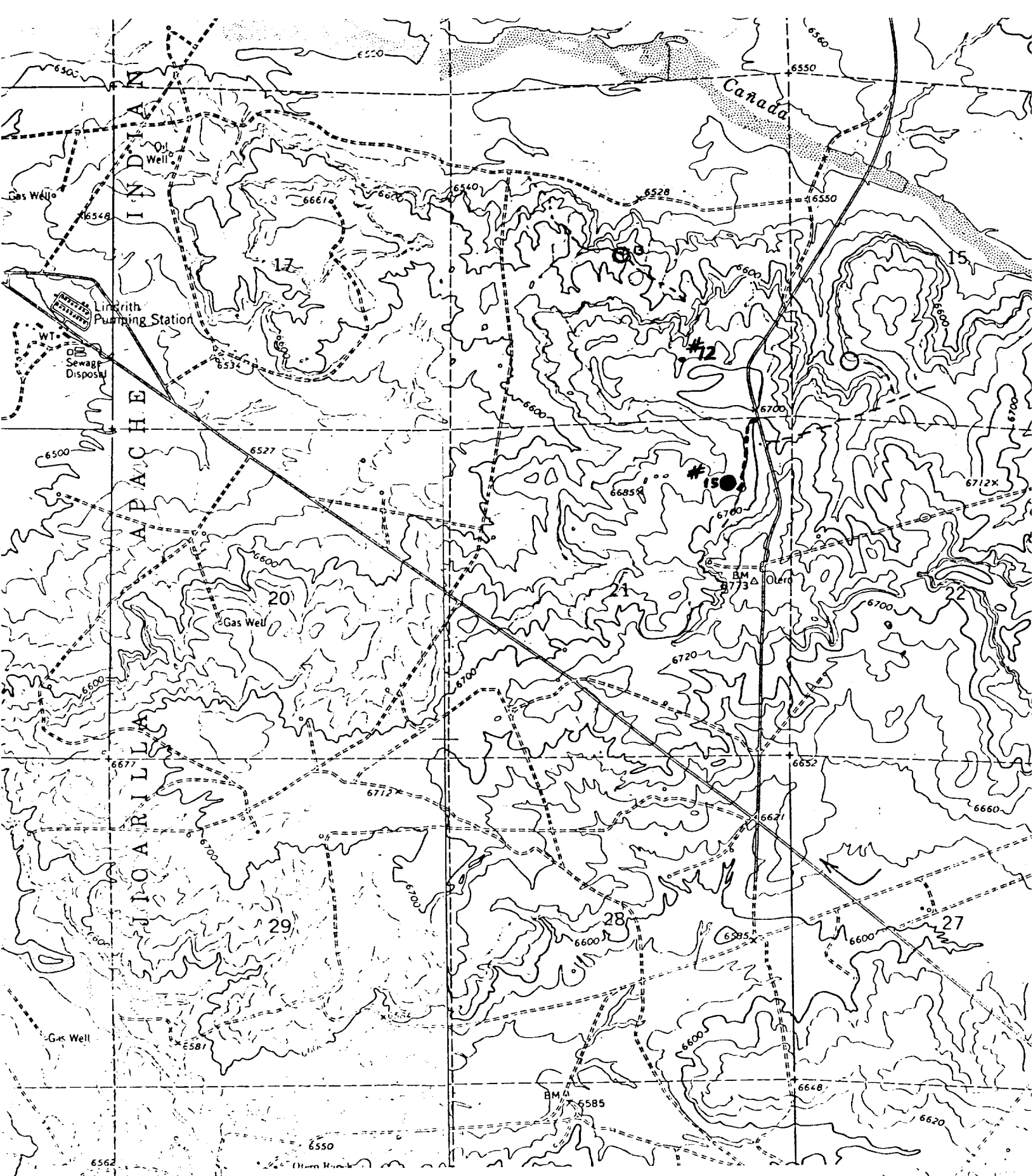
 Date *2/3/82*

I hereby certify that the well location shown on this plat was plotted from field notes of actual surveys made by me or under my supervision, and that the same is true and correct to the best of my knowledge and belief.

 Date Surveyed *December 14, 1981*
 Registered Professional Engineer and/or Land Surveyor

Fred B. Kerr Jr.
 Certificate No. *3950*
 B. KERR, JR.

0 330 660 990 1320 1650 1980 2310 2640 2000 1500 1000 500 0



Vicinity Map for
CONOCO, INC. #15 NE HAYNES
990'FNL 990'FEL Sec. 21-T24N-R5W
RIO ARriba COUNTY, NEW MEXICO

Exhibit A