

UNITED STATES  
DEPARTMENT OF THE INTERIOR  
GEOLOGICAL SURVEY

## APPLICATION FOR PERMIT TO DRILL, DEEPEN, OR PLUG BACK

1a. TYPE OF WORK

DRILL ☒DEEPEN ☐PLUG BACK ☐

b. TYPE OF WELL

OIL  
WELL ☐GAS  
WELL ☒

OTHER

SINGLE  
ZONE ☒MULTIPLE  
ZONE ☐

2. NAME OF OPERATOR

Robert L. Bayless

3. ADDRESS OF OPERATOR

P.O. Box 1541, Farmington, NM 87401

4. LOCATION OF WELL (Report location clearly and in accordance with any State requirements.)

At surface

965' FNL &amp; 865' FWL

At proposed prod. zone

same

14. DISTANCE IN MILES AND DIRECTION FROM NEAREST TOWN OR POST OFFICE\*

15. DISTANCE FROM PROPOSED\*

LOCATION TO NEAREST  
PROPERTY OR LEASE LINE, FT.

(Also to nearest drlg. unit line, if any)

18. DISTANCE FROM PROPOSED LOCATION\*

TO NEAREST WELL, DRILLING, COMPLETED,  
OR APPLIED FOR, ON THIS LEASE, FT.

21. ELEVATIONS (Show whether DF, RT, GR, etc.)

7137' GL 7142

16. NO. OF ACRES IN LEASE

2560

19. PROPOSED DEPTH

7625'

17. NO. OF ACRES ASSIGNED  
TO THIS WELL

160

20. ROTARY OR CABLE TOOLS

Rotary

22. APPROX. DATE WORK WILL START\*

As soon as APD Approved

23.

## PROPOSED CASING AND CEMENTING PROGRAM

SIZE OF HOLE	SIZE OF CASING	WEIGHT PER FOOT	SETTING DEPTH	QUANTITY OF CEMENT
12-1/4"	8-5/8"	24#/ft.	200 ft.	100 sacks, circulated to surface
7-7/8"	4-1/2"	10.5# & 11.6#	7625 ft.	1st stage: 991 cu. ft., circulated to cover Cliff House
				2nd Stage: 473 cu. ft., circulated 650 to cover Ojo Alamo

Will drill 12-1/4" hole to 200 ft. and set 200 ft. of 8-5/8", 24#/ft., J-55, used casing and cement with 100 sacks Class "B" cement with 2% CaCl. Cement will be circulated to surface. Will drill to 7625 ft. and run logs. If well appears productive, will run 7000 ft. of 4-1/2", 10.5#/ft., J-55, new casing and 625 ft. of 4-1/2", 11.6#/ft., J-55, new casing with cementing stage collar at 5745 ft. Will cement long string as follows: 1st stage: 991 cu. ft. Class "B" cement; 2nd stage: 473 cu. ft. Class "B" w/2%, D-79 extender to cover the Ojo Alamo formation. Will perforate and stimulate well as required. No abnormal pressures or temperatures are anticipated. Circulation medium will be clear, water, natural mud and water loss additives. Blowout preventer schematic is attached. The gas from this formation is dedicated.

(over)

IN ABOVE SPACE DESCRIBE PROPOSED PROGRAM: If proposal is to deepen or plug back, give data on present productive zone and proposed new productive zone. If proposal is to drill or deepen directionally, give pertinent data on subsurface locations and measured and true vertical depths. Give blowout preventer program, if any.

24.

SIGNED

TITLE

Operator

DATE April 16, 1982

(This space for Federal or State office use)

PERMIT NO.

APPROVED BY

CONDITIONS OF APPROVAL, IF ANY:

APPROVAL DATE

MAY 5 1982  
OIL CON. COM.  
DIST. 3APPROVED  
AS AMENDEDAPR 28 1982  
Elliott  
For JAMES F. SAMS  
DISTRICT ENGINEER

All distances must be from the outer boundaries of the Section.

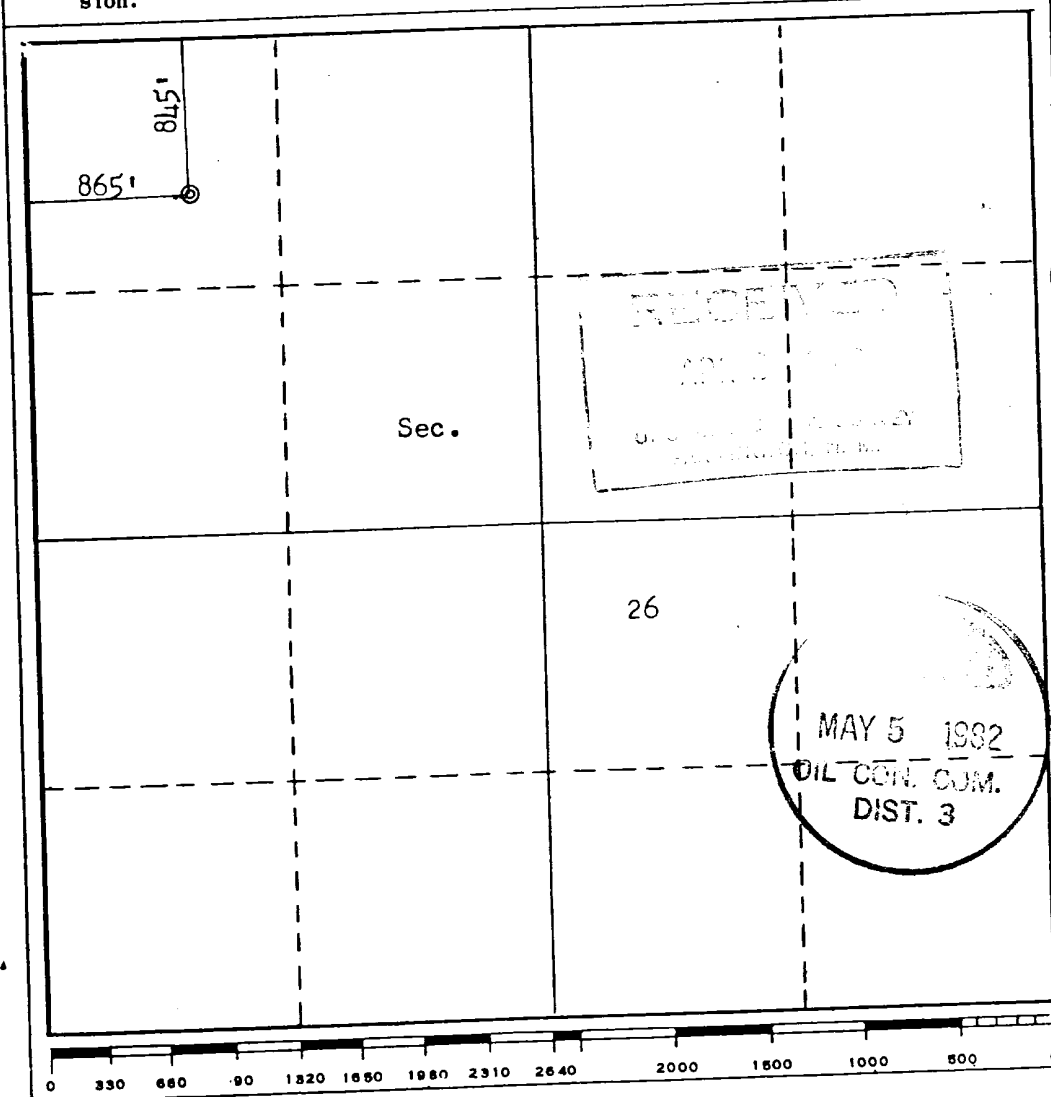
Operator <b>R. L. BAYLESS</b>			Lease <b>MEDIO CANYON</b>		Well No. <b>6</b>
Unit Letter <b>D</b>	Section <b>26</b>	Township <b>24N</b>	Range <b>4W</b>	County <b>Rio Arriba</b>	
Actual Footage Location of Well: <b>845</b> feet from the <b>North</b> line and <b>865</b> feet from the <b>West</b> line					
Ground Level Elev. <b>7142</b>	Producing Formation <b>Gallup/Dakota</b>		Pool <b>West Lindrith Gallup/Dakota</b>		Dedicated Acreage: <b>160</b> Acres

1. Outline the acreage dedicated to the subject well by colored pencil or hachure marks on the plat below.
2. If more than one lease is dedicated to the well, outline each and identify the ownership thereof (both as to working interest and royalty).
3. If more than one lease of different ownership is dedicated to the well, have the interests of all owners been consolidated by communitization, unitization, force-pooling, etc?

☐ Yes ☐ No If answer is "yes," type of consolidation \_\_\_\_\_

If answer is "no," list the owners and tract descriptions which have actually been consolidated. (Use reverse side of this form if necessary.) \_\_\_\_\_

No allowable will be assigned to the well until all interests have been consolidated (by communitization, unitization, forced-pooling, or otherwise) or until a non-standard unit, eliminating such interests, has been approved by the Commission.



CERTIFICATION

I hereby certify that the information contained herein is true and complete to the best of my knowledge and belief.

Name  
**Robert L. Bayless**

Position  
**Owner**

Company  
**Robert L. Bayless**

Date  
**April 26, 1982**

I hereby certify that the well location shown on this plat was plotted from field notes of actual surveys made by me or under my supervision, and that the same is true and correct to the best of my knowledge and belief.

Date Surveyed

**April 22, 1982**

Registered Professional Engineer and/or Land Surveyor

**Fred B. Kerr Jr.**

Certificate No.

**3950**

