

UNITED STATES  
DEPARTMENT OF THE INTERIOR  
GEOLOGICAL SURVEY

## APPLICATION FOR PERMIT TO DRILL, DEEPEN, OR PLUG BACK

## 1a. TYPE OF WORK

DRILL ☒DEEPEN ☐PLUG BACK ☐

## b. TYPE OF WELL

OIL  
WELL ☐GAS  
WELL ☒

OTHER

SINGLE  
ZONE ☒MULTIPLE  
ZONE ☐

## 2. NAME OF OPERATOR

CONOCO INC.

## 3. ADDRESS OF OPERATOR

P. O. Box 460, Hobbs, N.M. 88240

## 4. LOCATION OF WELL (Report location clearly and in accordance with any State requirements.\*)

At surface

1850' FNL &amp; 1850' FWL

At proposed prod. zone

## 14. DISTANCE IN MILES AND DIRECTION FROM NEAREST TOWN OR POST OFFICE

## 15. DISTANCE FROM PROPOSED\*

LOCATION TO NEAREST  
PROPERTY OR LEASE LINE, FT.  
(Also to nearest drlg. unit line, if any)18. DISTANCE FROM PROPOSED LOCATION\*  
TO NEAREST WELL, DRILLING, COMPLETED,  
OR APPLIED FOR, ON THIS LEASE, FT.

## 21. ELEVATIONS (Show whether DF, RT, GR, etc.)

6583' GR

## 23.

## PROPOSED CASING AND CEMENTING PROGRAM

SIZE OF HOLE	SIZE OF CASING	WEIGHT PER FOOT	SETTING DEPTH	QUANTITY OF CEMENT
12 1/4"	8 5/8"	24#	300'	210sx - circulate
6 1/2"	3 1/2"	9.3#	2490'	273sx - 1600' cover of Alamogordo

It is proposed to drill a straight hole to a TD of 2490' and complete it as a Pictured Cliffs gas well.

See attachments for 10 point well plan and 13 point surface use plan.

Acreage is not dedicated to purchaser.

IN ABOVE SPACE DESCRIBE PROPOSED PROGRAM: If proposal is to deepen or plug back, give data on present productive zone and proposed new productive zone. If proposal is to drill or deepen directionally, give pertinent data on subsurface locations and measured and true vertical depths. Give blowout preventer program, if any.

## 24.

SIGNED

*A. E. Bingham*

TITLE

Administrative Supervisor

DATE

April 23, 1982

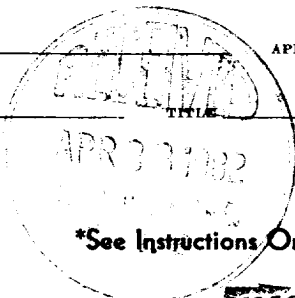
(This space for Federal or State office use)

PERMIT NO.

APPROVAL DATE

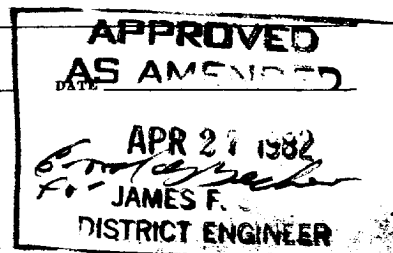
APPROVED BY

CONDITIONS OF APPROVAL, IF ANY:



\*See Instructions On Reverse Side

NMOCC



30-039-20861

5. LEASE DESIGNATION AND SERIAL NO.  
*Contract 36*

6. IF INDIAN, ALLOTTEE OR TRIBE NAME  
*Jicarilla Apache*

7. UNIT AGREEMENT NAME

8. FARM OR LEASE NAME  
*NE Haynes*

9. WELL NO.  
*13*

10. FIELD AND POOL, OR WILDCAT  
*Ballard Pictured Cliffs*

11. SEC., T., R., M., OR BLK.  
F AND SURVEY OR AREA  
*Sec. 16, T-24N, R-5W*

12. COUNTY OR PARISH  
*Rio Arriba*

13. STATE  
*NM*

16. NO. OF ACRES IN LEASE  
*160*

17. NO. OF ACRES ASSIGNED TO THIS WELL  
*Rotary*

20. ROTARY OR CABLE TOOLS

22. APPROX. DATE WORK WILL START\*  
*June 7, 1982*

NMS6  
ELG1  
B6F42  
ilel

## OIL CONSERVATION DIVISION

STATE OF NEW MEXICO  
ENERGY AND MINERALS DEPARTMENTP. O. BOX 2088  
SANTA FE, NEW MEXICO 87501Form C-102  
Revised 10-1-78

All distances must be from the outer boundaries of the Section.

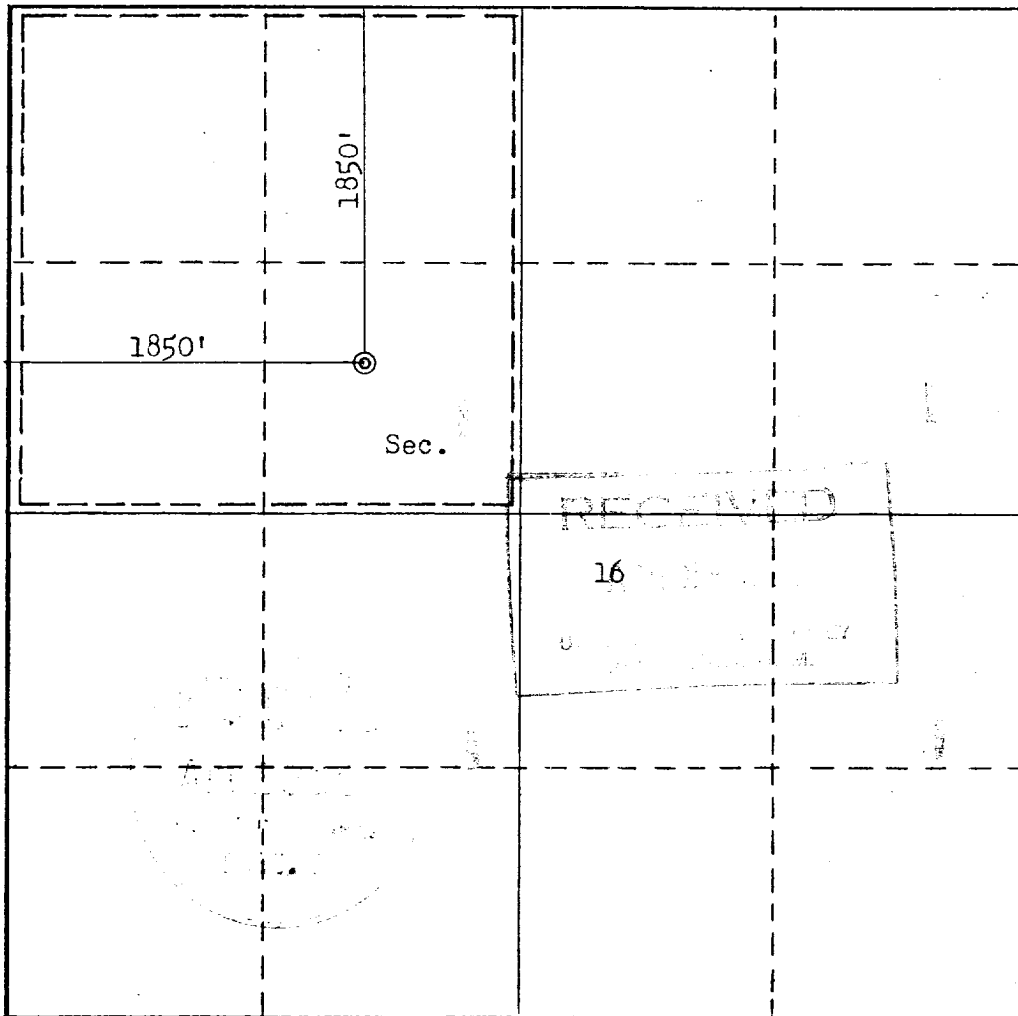
Operator <b>CONOCO, INCORPORATED</b>			Lease <b>NE HAYNES</b>		Well No. <b>13</b>
Unit Letter <b>F</b>	Section <b>16</b>	Township <b>24N</b>	Range <b>5W</b>	County <b>Rio Arriba</b>	
Actual Footage Location of Well: <b>1850</b> feet from the <b>North</b> line and <b>1850</b> feet from the <b>West</b> line					
Ground Level Elev. <b>6583</b>	Producing Formation <b>Pictured Cliffs</b>		Pool <b>Ballard Pictured Cliffs</b>	Dedicated Acreage: <b>160</b> Acres	

1. Outline the acreage dedicated to the subject well by colored pencil or hachure marks on the plat below.
2. If more than one lease is dedicated to the well, outline each and identify the ownership thereof (both as to working interest and royalty).
3. If more than one lease of different ownership is dedicated to the well, have the interests of all owners been consolidated by communitization, unitization, force-pooling, etc?

☐ Yes ☐ No If answer is "yes," type of consolidation \_\_\_\_\_

If answer is "no," list the owners and tract descriptions which have actually been consolidated. (Use reverse side of this form if necessary.) \_\_\_\_\_

No allowable will be assigned to the well until all interests have been consolidated (by communitization, unitization, forced-pooling, or otherwise) or until a non-standard unit, eliminating such interests, has been approved by the Commission.



## CERTIFICATION

I hereby certify that the information contained herein is true and complete to the best of my knowledge and belief.

Name **R. E. Bingham**  
 Position **Administrative Supervisor**  
 Company **Conoco Inc.**  
 Date **April 23, 1982**

I hereby certify that the well location shown on this plat was plotted from field notes of actual surveys made by me or under my supervision, and that the same is true and correct to the best of my knowledge and belief.

Date Surveyed

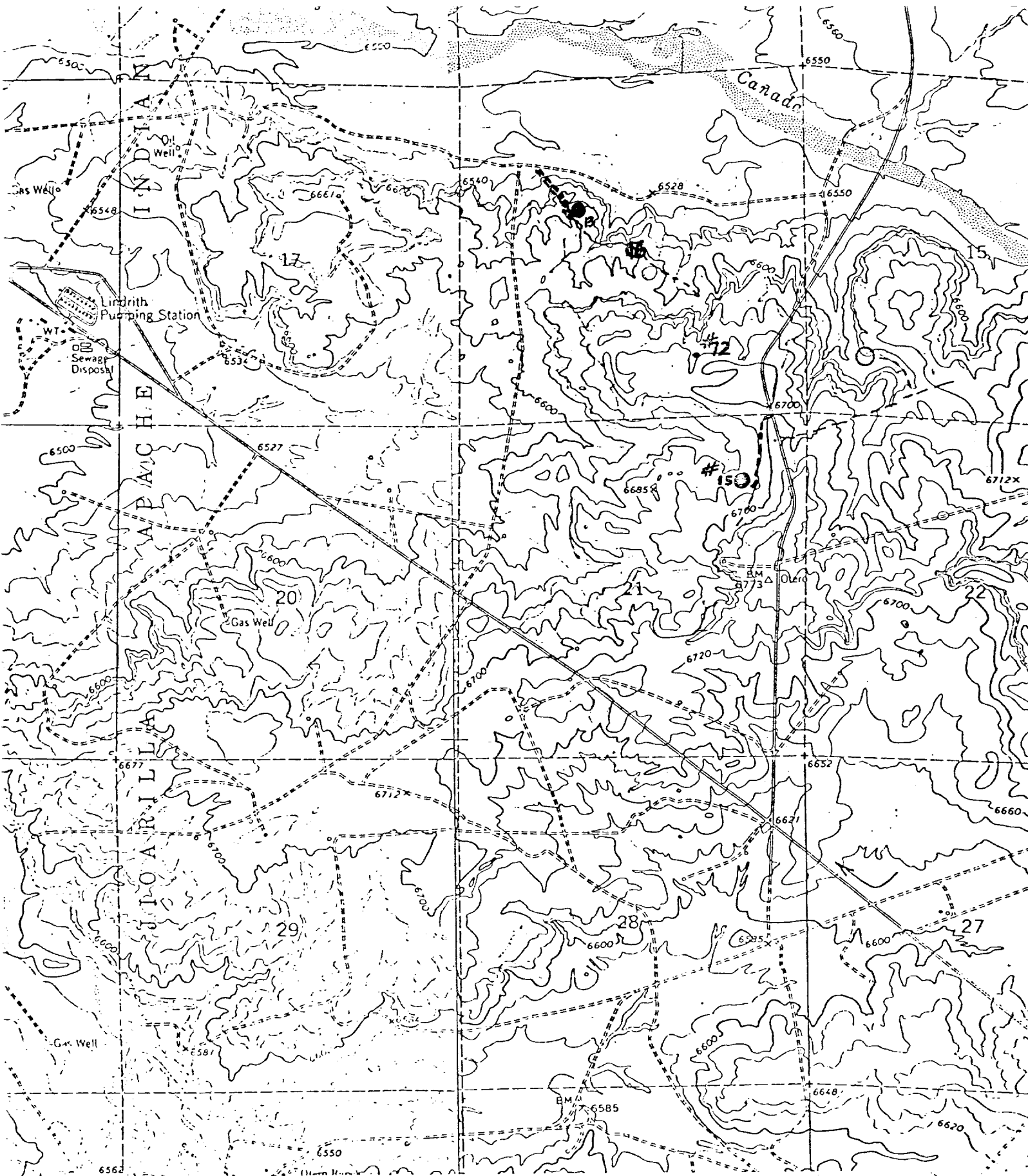
March 2, 1982

Registered Professional Engineer  
and/or Land Surveyor

**Fred B. Kerr Jr.**  
 Certificate No. **3950**

3950

B. KERR, JR.



Vicinity Map for  
CONOCO, INC. #15 NE HAYNES  
990'FNL 990'FEL Sec. 21-T24N-R5W  
RIO ARRIBA COUNTY, NEW MEXICO

Exhibit A