

6 MMS, Fmn

1 McHugh

1 File

Form 9-331 C
(May 1963)

SUBMIT IN TRIPLICATE*

(Other instructions on
reverse side)Form approved.
Budget Bureau No. 42-R1425.

**UNITED STATES
DEPARTMENT OF THE INTERIOR
GEOLOGICAL SURVEY**

APPLICATION FOR PERMIT TO DRILL, DEEPEN, OR PLUG BACK

1a. TYPE OF WORK

DRILL ☒DEEPEN ☐PLUG BACK ☐

b. TYPE OF WELL

OIL WELL ☐GAS WELL ☒

OTHER

SINGLE ZONE ☐MULTIPLE ZONE ☐

2. NAME OF OPERATOR

Jerome P. McHugh

3. ADDRESS OF OPERATOR

P O Box 208, Farmington, NM 87401

4. LOCATION OF WELL (Report location clearly and in accordance with any State requirements.)*

At surface

920' FNL - 910' FEL

At proposed prod. zone

14. DISTANCE IN MILES AND DIRECTION FROM NEAREST TOWN OR POST OFFICE*

8 miles North of Lindrith, NM

15. DISTANCE FROM PROPOSED*

LOCATION TO NEAREST
PROPERTY OR LEASE LINE, FT.
(Also to nearest drlg. unit line, if any)

910'

16. NO. OF ACRES IN LEASE

160

17. NO. OF ACRES ASSIGNED
TO THIS WELL

160

18. DISTANCE FROM PROPOSED LOCATION*
TO NEAREST WELL, DRILLING COMPLETED,
OR APPLIED FOR, ON THIS LEASE, FT.

1/2 mile

19. PROPOSED DEPTH

3750'

20. ROTARY OR CABLE TOOLS

Rotary

21. ELEVATIONS (Show whether DF, RT, GR, etc.)

7270' GL

22. APPROX. DATE WORK WILL START*

4-20-82

23.

PROPOSED CASING AND CEMENTING PROGRAM

| SIZE OF HOLE | SIZE OF CASING | WEIGHT PER FOOT | SETTING DEPTH | QUANTITY OF CEMENT |
|--------------|----------------|-----------------|---------------|--------------------|
| 9-7/8" | 7" | 23# | 90' | 50 sx to surface |
| 6-1/4" | 4-1/2" | 10.5# | 3750' | 200 sx to surface |

Plan to drill with spud mud to 90' and set surface casing. Then will drill a 6 1/4" hole to total depth to test the Pictured Cliffs Formation. Plan to run IES & CDL logs and, if the well appears productive, will run 4 1/2" casing, selectively perforate, frac, clean out after frac and complete well using 1 1/2" or 1 1/4" tubing.

GAS NOT DEDICATED.

IN ABOVE SPACE DESCRIBE PROPOSED PROGRAM: If proposal is to deepen or plug back, give data on present productive zone and proposed new productive zone. If proposal is to drill or deepen directionally, give pertinent data on subsurface locations and measured and true vertical depths. Give blowout preventer program, if any.

24.

SIGNED

Jerome P. McHugh

TITLE

Agent

DATE

3-24-82

(This space for Federal or State office use)

PERMIT NO.

APPROVAL DATE

APPROVED BY

TITLE

CONDITIONS OF APPROVAL, IF ANY:

**APPROVED
AS AMENDED**

DATE

APR 29 1982

J. Elliott
for JAMES F. ...
DISTRICT ENGINEER

UNNOCC

OIL CONSERVATION DIVISION

P. O. BOX 2088

Form C-102
Revised 10-1-78STATE OF NEW MEXICO
ENERGY AND MINERALS DEPARTMENT

SANTA FE, NEW MEXICO 87501

All distances must be from the outer boundaries of the Section.

| | | | | |
|----------------------------------|--|-----------------------------|-----------------|----------------------|
| Operator Jerome P. McHugh | | Lease Hill Well | | Well No. 1 |
| Unit Letter A | Section 16 | Township 25 North | Range 2 West | County Rio Arriba |
| Actual Footage Location of Well: | | | | |
| 920 feet from the North line and | | 910 feet from the East line | | Dedicated Acreage: |
| Ground Level Elev. 7270 | Producing Formation Pictured Cliffs | Pool Gavilan P.C. Ext. | 160 Acres | |

1. Outline the acreage dedicated to the subject well by colored pencil or hachure marks on the plat below.
2. If more than one lease is dedicated to the well, outline each and identify the ownership thereof (both as to working interest and royalty).
3. If more than one lease of different ownership is dedicated to the well, have the interests of all owners been consolidated by communitization, unitization, force-pooling, etc?

☐ Yes ☐ No If answer is "yes," type of consolidation _____

If answer is "no," list the owners and tract descriptions which have actually been consolidated. (Use reverse side of this form if necessary.) _____

No allowable will be assigned to the well until all interests have been consolidated (by communitization, unitization, forced-pooling, or otherwise) or until a non-standard unit, eliminating such interests, has been approved by the Division.

Sec. 16

MAY 13 1982
DIST. 3

RECEIVED

CERTIFICATION

I hereby certify that the information contained herein is true and complete to the best of my knowledge and belief.

Jerome P. McHugh Jr.
Name
Jerome P. McHugh Jr.

Position
Agent

Company
Dugan Production Corp.

Date
3-24-82

I hereby certify that the location shown on this plat was obtained from field notes of actual survey made by me or under my supervision, and that the same is true and correct to the best of my knowledge and belief.

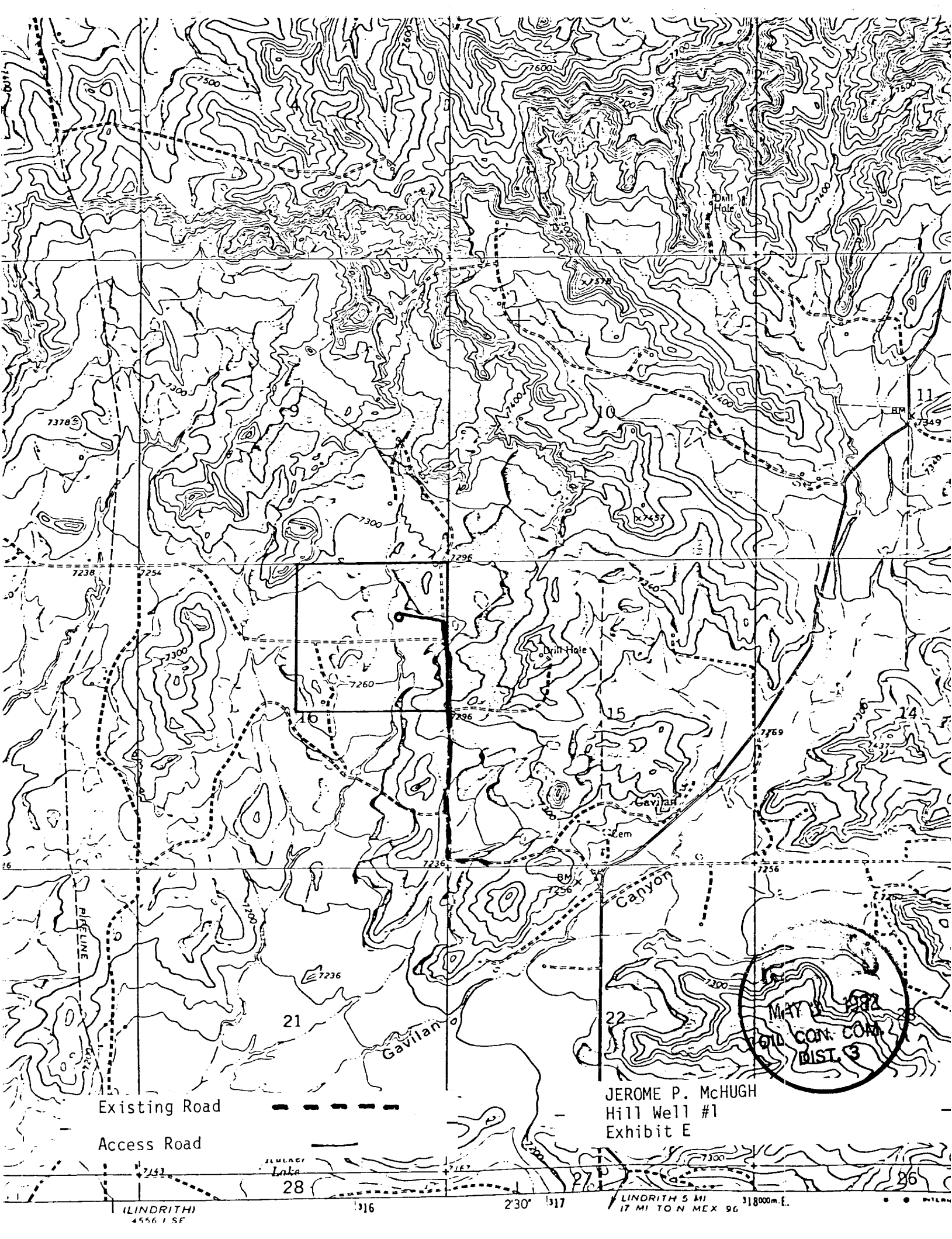
Date Surveyed

March 17, 1982

Registered Professional Engineer
and/or Land Surveyor

Edgar L. Risenhoover
Certificate No. 5979

Edgar L. Risenhoover, L.S.



Existing Road

Access Road

JEROME P. McHUGH
Hill Well #1
Exhibit E

(LINDRITH)
4556 1 SE

316

2'30" 317

LINDRITH 5 MI
17 MI TO N MEX 96 318000m.E.

MAY 13 1982
CON. COM.
DIST. 3