

UNITED STATES  
DEPARTMENT OF THE INTERIOR  
GEOLOGICAL SURVEY

30-C-39-22967

APPLICATION FOR PERMIT TO DRILL, DEEPEN, OR PLUG BACK

1a. TYPE OF WORK  
DRILL ☒ DEEPEN ☐ PLUG BACK ☐

b. TYPE OF WELL  
OIL WELL ☐ GAS WELL ☒ OTHER ☐ SINGLE ZONE ☒ MULTIPLE ZONE ☐

2. NAME OF OPERATOR  
Getty Oil Company

3. ADDRESS OF OPERATOR  
P.O. Box 3360, Casper, Wyoming 82602

4. LOCATION OF WELL (Report location clearly and in accordance with any State requirements.\*)  
At surface  
2100' FNL, 1120' FEL Section 5, T24N, R5W  
At proposed prod. zone  
Same

14. DISTANCE IN MILES AND DIRECTION FROM NEAREST TOWN OR POST OFFICE\*

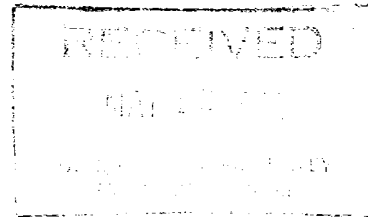
15. DISTANCE FROM PROPOSED\* LOCATION TO NEAREST PROPERTY OR LEASE LINE, FT. (Also to nearest drlg. unit line, if any)  
18. DISTANCE FROM PROPOSED LOCATION\* TO NEAREST WELL, DRILLING, COMPLETED, OR APPLIED FOR, ON THIS LEASE, FT.  
16. NO. OF ACRES IN LEASE  
2657  
19. PROPOSED DEPTH  
6985'

21. ELEVATIONS (Show whether DF, RT, GR, etc.)  
6706' GR

23. PROPOSED CASING AND CEMENTING PROGRAM

SIZE OF HOLE	SIZE OF CASING	WEIGHT PER FOOT	SETTING DEPTH	QUANTITY OF CEMENT
12 1/4"	8 5/8"	24.0#	300'	*250 sx to cement to surface
7 7/8"	5 1/2"	14.0# & 15.5#	6985'	*1060 sx to cement to surface

\*Cement volumes will depend on volume calculated from hole caliper. Thirteen Point Surface Use Plan Attached.



Gas is dedicated.

IN ABOVE SPACE DESCRIBE PROPOSED PROGRAM: If proposal is to deepen or plug back, give data on present productive zone and proposed new productive zone. If proposal is to drill or deepen directionally, give pertinent data on subsurface locations and measured and true vertical depths. Give blowout preventer program, if any.

24. SIGNED [Signature] TITLE Acting Area Superintendent DATE 5-5-82

(This space for Federal or State office use)

PERMIT NO. \_\_\_\_\_ APPROVAL DATE \_\_\_\_\_

APPROVED BY \_\_\_\_\_ TITLE \_\_\_\_\_ DATE MAY 14 1982

CONDITIONS OF APPROVAL, IF ANY:

Area 3-449

on 2

For [Signature]  
DISTRICT ENGINEER

MMGOC

NEW MEXICO OIL CONSERVATION COMMISSION  
WELL LOCATION AND ACREAGE DEDICATION PLAT

Form C-102  
Supersedes C-128  
Effective 1-1-65

All distances must be from the outer boundaries of the Section.

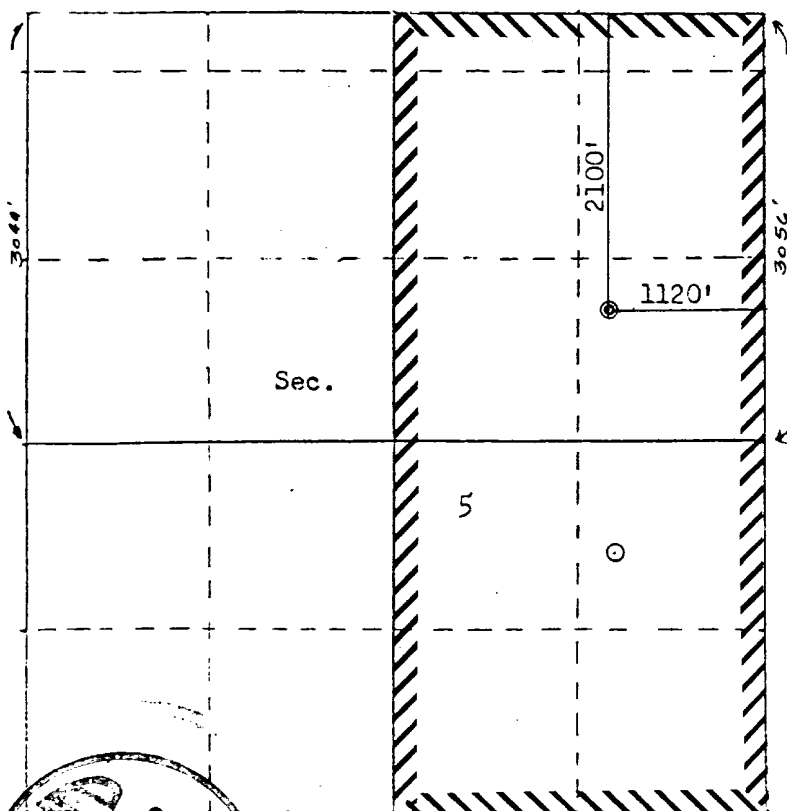
Operator GETTY OIL COMPANY			Lease JICARILLA "B"		Well No. 23E
Unit Letter H	Section 5	Township 24N	Range 5W	County Rio Arriba	
Actual Footage Location of Well: 2100 feet from the North line and 1120 feet from the East line					
Ground Level Elev: 6706	Producing Formation Dakota		Pool Basin Dakota		Dedicated Acreage: E/345.05 Acres

1. Outline the acreage dedicated to the subject well by colored pencil or hachure marks on the plat below.
2. If more than one lease is dedicated to the well, outline each and identify the ownership thereof (both as to working interest and royalty).
3. If more than one lease of different ownership is dedicated to the well, have the interests of all owners been consolidated by communitization, unitization, force-pooling, etc?

☐ Yes ☐ No If answer is "yes," type of consolidation \_\_\_\_\_

If answer is "no," list the owners and tract descriptions which have actually been consolidated. (Use reverse side of this form if necessary.) \_\_\_\_\_

No allowable will be assigned to the well until all interests have been consolidated (by communitization, unitization, forced-pooling, or otherwise) or until a non-standard unit, eliminating such interests, has been approved by the Commission.



Scale: 1"=1320'

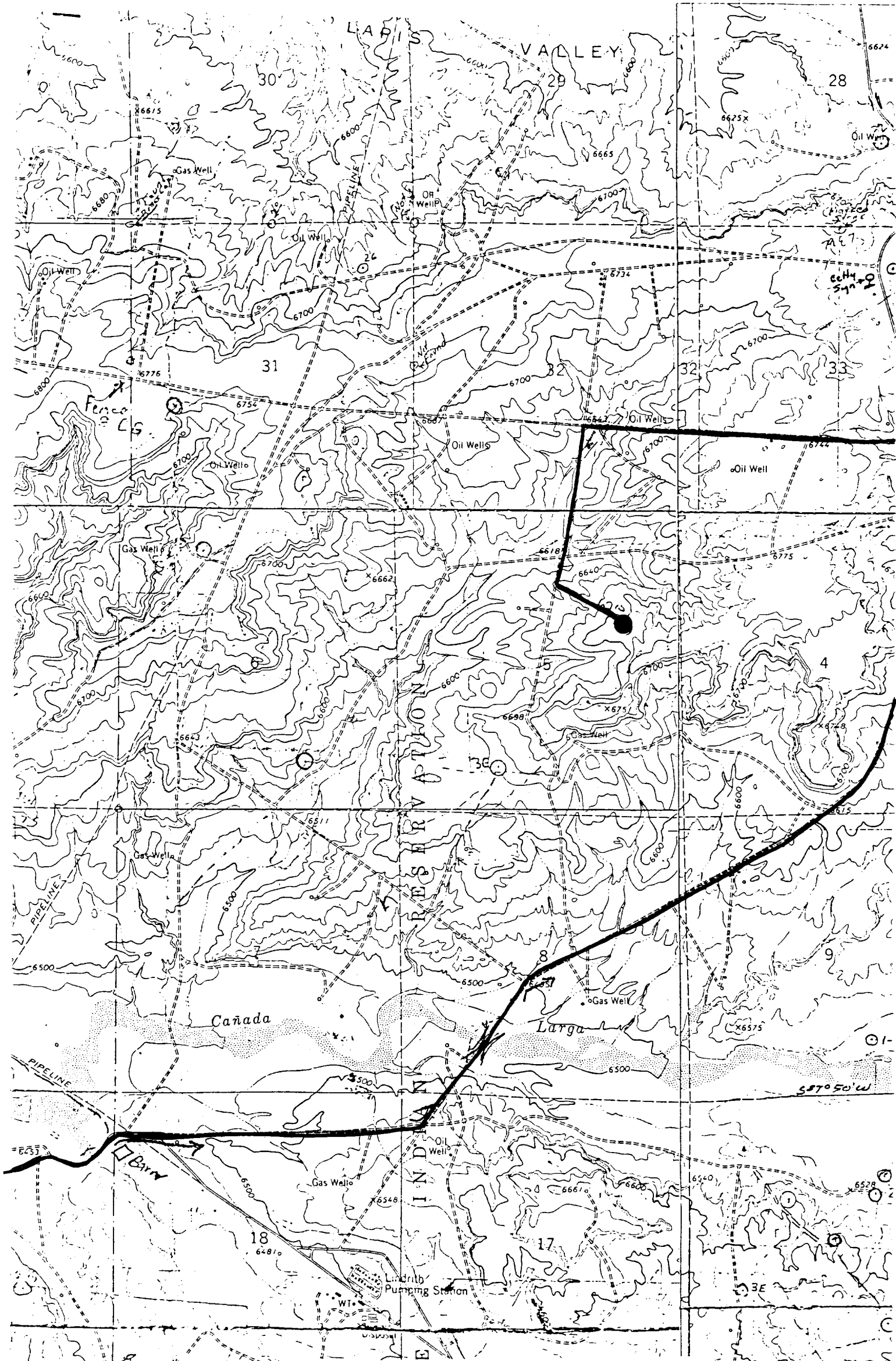
CERTIFICATION

I hereby certify that the information contained herein is true and complete to the best of my knowledge and belief.

Name: Mr. Halison  
Position: Acting  
Area Superintendent  
Company: Getty Oil Company  
Date: 5-5-82

I hereby certify that the well location shown on this plat was plotted from field notes of actual surveys made by me or under my supervision, and that the same is true and correct to the best of my knowledge and belief.

Date Surveyed: April 23, 1982  
Registered Professional Engineer and Land Surveyor: Fred S. Gentry  
Certificate No.: 2000



Vicinity Map for  
GETTY OIL COMPANY #23E JICARILLA "B"  
2100'FNL 1120'FEL Sec. 5-T24N-R5W  
RIO ARriba COUNTY, NEW MEXICO

MAP A