

UNITED STATES  
DEPARTMENT OF THE INTERIOR  
GEOLOGICAL SURVEY

30-039-22968

APPLICATION FOR PERMIT TO DRILL, DEEPEN, OR PLUG BACK

1a. TYPE OF WORK

DRILL ☒

DEEPEN ☐

PLUG BACK ☐

b. TYPE OF WELL

OIL WELL ☐

GAS WELL ☒

OTHER

SINGLE ZONE ☐

MULTIPLE ZONE ☐

2. NAME OF OPERATOR

DUGAN PRODUCTION CORP.

3. ADDRESS OF OPERATOR

P O Box 208, Farmington, NM 87401

4. LOCATION OF WELL (Report location clearly and in accordance with any State requirements.)\*

At surface

1850' FNL - 1850' FEL

At proposed prod. zone

14. DISTANCE IN MILES AND DIRECTION FROM NEAREST TOWN OR POST OFFICE\*

10 miles NE of Counselor, NM

15. DISTANCE FROM PROPOSED\*

LOCATION TO NEAREST PROPERTY OR LEASE LINE, FT.  
(Also to nearest drlg. unit line, if any)

790'

16. NO. OF ACRES IN LEASE

640

17. NO. OF ACRES ASSIGNED TO THIS WELL

160

18. DISTANCE FROM PROPOSED LOCATION\* TO NEAREST WELL, DRILLING, COMPLETED, OR APPLIED FOR, ON THIS LEASE, FT.

200' to W

19. PROPOSED DEPTH

2500'

20. ROTARY OR CABLE TOOLS

Rotary

21. ELEVATIONS (Show whether DF, RT, GR, etc.)

6596'

22. APPROX. DATE WORK WILL START\*

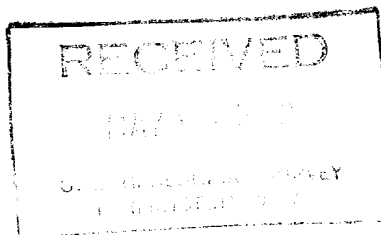
6-1-82

23. PROPOSED CASING AND CEMENTING PROGRAM

| SIZE OF HOLE | SIZE OF CASING | WEIGHT PER FOOT | SETTING DEPTH | QUANTITY OF CEMENT           |
|--------------|----------------|-----------------|---------------|------------------------------|
| 8-3/4"       | 7"             | 23#             | 90'           | 35 sx to surface             |
| 5-1/8"       | 2-7/8"         | 6.5#            | 2500'         | 250 cu.ft. slurry to surface |

Plan to drill with spud mud to approx. 100' to set surface csg. Will then drill with as little mud as possible, using the slim hole technique to test the Pictured Cliffs formation to a total depth of 2500'. Will then run an IES log and, if productive, will run 2-7/8" tbg. and cement to surface. Will selectively perforate, frac, clean out after frac & complete well.

GAS NOT DEDICATED



IN ABOVE SPACE DESCRIBE PROPOSED PROGRAM: If proposal is to deepen or plug back, give data on present productive zone and proposed new productive zone. If proposal is to drill or deepen directionally, give pertinent data on subsurface locations and measured and true vertical depths. Give blowout preventer program, if any.

24.

SIGNED

*Jerry McHugh*  
Jerry McHugh

TITLE Well Site Coordinator

DATE 5-24-82

(This space for Federal or State office use)

PERMIT NO.

APPROVAL DATE

APPROVED BY

CONDITIONS OF APPROVAL, IF ANY:

TITLE

APPROVED  
AS AMENDED

MAY 10 1982

*James F. Sims*  
JAMES F. SIMS  
DISTRICT ENGINEER

## OIL CONSERVATION DIVISION

STATE OF NEW MEXICO  
ENERGY AND MINERALS DEPARTMENTP. O. BOX 2088  
SANTA FE, NEW MEXICO 87501Form C-102  
Revised 10-1-78

All distances must be from the outer boundaries of the Section.

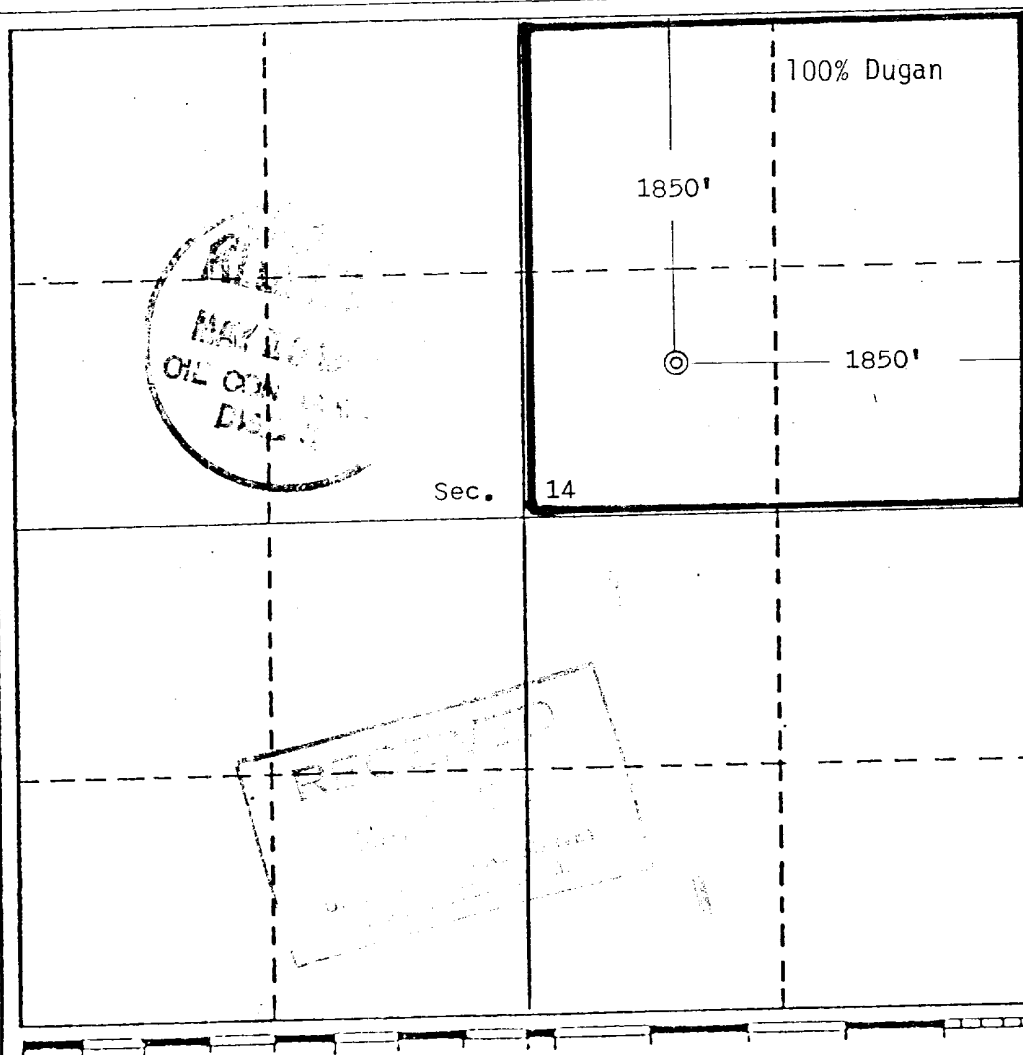
|  |  |                           |                     |                                 |                |
|--|--|---------------------------|---------------------|---------------------------------|----------------|
| Operator<br>Dugan Production Corporation   |  |                           | Lease<br>A New Dawn |                                 | Well No.<br>#4 |
| Unit Letter<br>G   | Section<br>14                          | Township<br>24 North      | Range<br>5 West     | County<br>Rio Arriba            |                |
| Actual Footage Location of Well:<br>1850 feet from the North line and 1850 feet from the East line |  |                           |                     |                                 |                |
| Ground Level Elev.<br>6596   | Producing Formation<br>Pictured Cliffs | Pool<br>Ballard P.C. Ext. |                     | Dedicated Acreage:<br>160 Acres |                |

1. Outline the acreage dedicated to the subject well by colored pencil or hachure marks on the plat below.
2. If more than one lease is dedicated to the well, outline each and identify the ownership thereof (both as to working interest and royalty).
3. If more than one lease of different ownership is dedicated to the well, have the interests of all owners been consolidated by communitization, unitization, force-pooling, etc?

☐ Yes ☐ No If answer is "yes," type of consolidation \_\_\_\_\_

If answer is "no," list the owners and tract descriptions which have actually been consolidated. (Use reverse side of this form if necessary.) \_\_\_\_\_

No allowable will be assigned to the well until all interests have been consolidated (by communitization, unitization, forced-pooling, or otherwise) or until a non-standard unit, eliminating such interests, has been approved by the Division.



## CERTIFICATION

I hereby certify that the information contained herein is true and complete to the best of my knowledge and belief.

*Jerry McHugh*  
Name  
Jerry McHugh

Position  
Well Site Coordinator

Company  
Dugan Production Corp.

Date  
4-30-82

I have checked the location shown on this plat was placed from field notes or actual measurements made by me or under my supervision, and that the same is true and correct to the best of my knowledge and belief.

Date Surveyed  
April 2, 1982

Registered Professional Engineer  
and/or Land Surveyor

*Edgar L. Risenhoover*  
Certificate No. 5979  
Edgar L. Risenhoover, L.S.

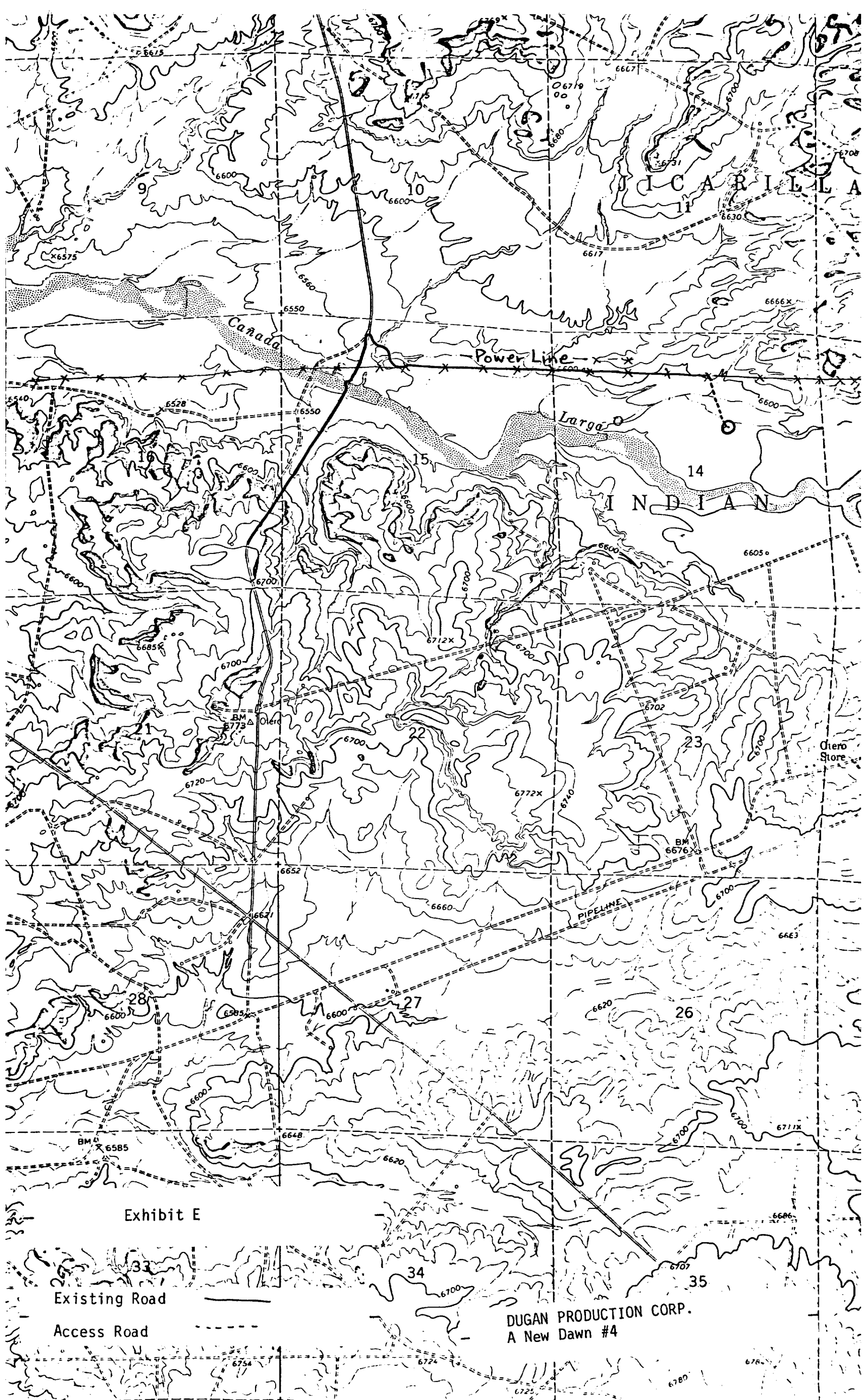


Exhibit E

Existing Road

Access Road

DUGAN PRODUCTION CORP.  
A New Dawn #4