

UNITED STATES
DEPARTMENT OF THE INTERIOR
GEOLOGICAL SURVEY

SUNDRY NOTICES AND REPORTS ON WELLS

(Do not use this form for proposals to drill or to deepen or plug back to a different reservoir. Use Form 9-331-C for such proposals.)

1. oil ☐ well gas ☒ well other
2. NAME OF OPERATOR
DUGAN PRODUCTION CORP.
3. ADDRESS OF OPERATOR
P O Box 208, Farmington, NM 87401
4. LOCATION OF WELL (REPORT LOCATION CLEARLY. See space 17 below.)
1850' FNL - 1850' FEL
AT SURFACE:
AT TOP PROD. INTERVAL:
AT TOTAL DEPTH:

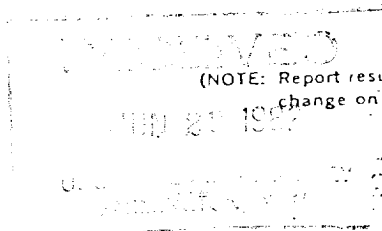
16. CHECK APPROPRIATE BOX TO INDICATE NATURE OF NOTICE, REPORT, OR OTHER DATA

REQUEST FOR APPROVAL TO:

- TEST WATER SHUT-OFF ☐
FRACTURE TREAT ☐
SHOOT OR ACIDIZE ☐
REPAIR WELL ☐
PULL OR ALTER CASING ☐
MULTIPLE COMPLETE ☐
CHANGE ZONES ☐
ABANDON* ☐
(other)

SUBSEQUENT REPORT OF:

- ☐
☐
☐
☐
☐
☐
☐
☒



(NOTE: Report results of multiple completion or zone change on Form 9-330.)

5. LEASE
Jicarilla Contract 37A
6. IF INDIAN, ALLOTTEE OR TRIBE NAME
Jicarilla Apache
7. UNIT AGREEMENT NAME
8. FARM OR LEASE NAME
A New Dawn
9. WELL NO.
4
10. FIELD OR WILDCAT NAME
**Wildcat Chacra
11. SEC., T., R., M., OR BLK. AND SURVEY OR AREA
Sec 14 T24N R5W
12. COUNTY OR PARISH
Rio Arriba
13. STATE
NM
14. API NO.
15. ELEVATIONS (SHOW DF, KDB, AND WD)
6596' GL

17. DESCRIBE PROPOSED OR COMPLETED OPERATIONS (Clearly state all pertinent details, and give pertinent dates, including estimated date of starting any proposed work. If well is directionally drilled, give subsurface locations and measured and true vertical depths for all markers and zones pertinent to this work.)*

See reverse for report of plugging.

Subsurface Safety Valve: Mand. and Type

Set @ _____ Ft.

18. I hereby certify that the foregoing is true and correct

SIGNED Thomas A. Dugan TITLE Petroleum Engineer DATE 6-28-84

(This space for Federal or State office use)

APPROVED BY _____ TITLE _____ DATE _____
CONDITIONS OF APPROVAL, IF ANY:

Approved as to plugging of the well bore.
Liability under bond is retained until
surface restoration is completed.

NMOCC

ctions on Reverse Side

APPROVED
AS AMENDED

DEC 10 1984

M. MILLENBACH
AREA MANAGER

DUGAN PRODUCTION CORP.
A New Dawn #4

6-25-82 Rigged up Geosource Perforators. Went in hole with 104 jts. tubing. Could not pump out bottom. Cemented in prior cementing jobs. Came out of hole with tubing. Perforated using 3 bi-wire glass shots, 1 SPF at bottom of Pictured Cliffs Formation at 2450'. Went in hole with Baker Model C-1 packer and 44 jts., set packer in tension at $\pm 1422.77'$. Rigged up Cementers Inc. Squeezed Pictured Cliffs Formation using 15 sx on outside of casing and a 5 sk plug inside casing, total 20 sx displaced thru tubing using 9 bbls. of water. Unset packer. Came out of hole with tubing. Perforated Ojo Alamo at 2100', 3 shots, 1 SPF, with bi-wire glass shots. Went in hole with Baker Model "R" packer and 34 jts. tubing to $\pm 1100'$. Set packer in tension. Squeezed Ojo Alamo, using 30 sx cement outside and 10 sx plug inside casing. Total of 40 sx plug across Ojo Alamo, inside and outside. Unset packer. Came out of hole with tubing. Set 5 sk plug at surface, displaced with $\frac{1}{2}$ bbl. water. Rigged down MTK. Shut down. Will set dry hole monument next week.

Will notify MMS when location is cleaned and restored.