

UNITED STATES  
DEPARTMENT OF THE INTERIOR  
GEOLOGICAL SURVEY

APPLICATION FOR PERMIT TO DRILL, DEEPEN, OR PLUG BACK

1a. TYPE OF WORK  
 DRILL ☒ DEEPEN ☐ PLUG BACK ☐

b. TYPE OF WELL  
 OIL WELL ☐ GAS WELL ☒ OTHER ☐ SINGLE ZONE ☒ MULTIPLE ZONE ☐

2. NAME OF OPERATOR  
 CONOCO INC.

3. ADDRESS OF OPERATOR  
 P. O. Box 460, Hobbs, N.M. 88240

4. LOCATION OF WELL (Report location clearly and in accordance with any State requirements.)\*  
 At surface 1090' FNL & 820' FNL  
 At proposed prod. zone

14. DISTANCE IN MILES AND DIRECTION FROM NEAREST TOWN OR POST OFFICE  
 2.5 miles S. of Hobbs, N.M.

15. DISTANCE FROM PROPOSED\* LOCATION TO NEAREST PROPERTY OR LEASE LINE, FT. (Also to nearest drlg. unit line, if any)

16. NO. OF ACRES IN LEASE

17. NO. OF ACRES ASSIGNED TO THIS WELL

18. DISTANCE FROM PROPOSED LOCATION\* TO NEAREST WELL, DRILLING, COMPLETED, OR APPLIED FOR, ON THIS LEASE, FT.

19. PROPOSED DEPTH  
 2560'

20. ROTARY OR CABLE TOOLS  
 ROTARY

21. ELEVATIONS (Show whether DF, RT, GR, etc.)  
 6684' GR

22. APPROX. DATE WORK WILL START\*  
 MAY 24, 1982

PROPOSED CASING AND CEMENTING PROGRAM

SIZE OF HOLE	SIZE OF CASING	WEIGHT PER FOOT	SETTING DEPTH	QUANTITY OF CEMENT
12 1/4"	8 3/8"	24.1#	300'	210 5V CIRCULANTE
6 7/8"	3 1/2"	9.3#	2560'	287 5X-1600'
				Cover c/j Alamo

It is proposed to drill the subject WELL to a TD of 2560' and complete as a BALLARD PICTURED CLIFFS GAS WELL. See Attachments for 10 point well plan and 13 point Surface Use Plan. Acreage is NOT dedicated.

IN ABOVE SPACE DESCRIBE PROPOSED PROGRAM: If proposal is to deepen or plug back, give data on present productive zone and proposed new productive zone. If proposal is to drill or deepen directionally, give pertinent data on subsurface locations and measured and true vertical depths. Give blowout preventer program, if any.

24. SIGNED Wm A. Dutton TITLE Administrative Supervisor DATE April 26, 1982  
 (This space for Federal or State office use)

PERMIT NO. \_\_\_\_\_

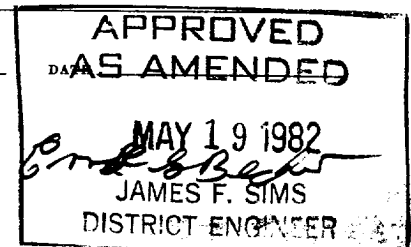
APPROVAL DATE

APPROVED BY \_\_\_\_\_ TITLE \_\_\_\_\_  
 CONDITIONS OF APPROVAL, IF ANY:



\*See Instructions On Reverse Side

NMOCC



## OIL CONSERVATION DIVISION

STATE OF NEW MEXICO  
ENERGY AND MINERALS DEPARTMENT

P. O. BOX 2088

SANTA FE, NEW MEXICO 87501

Form C-102  
Revised 10-1-78

All distances must be from the outer boundaries of the Section.

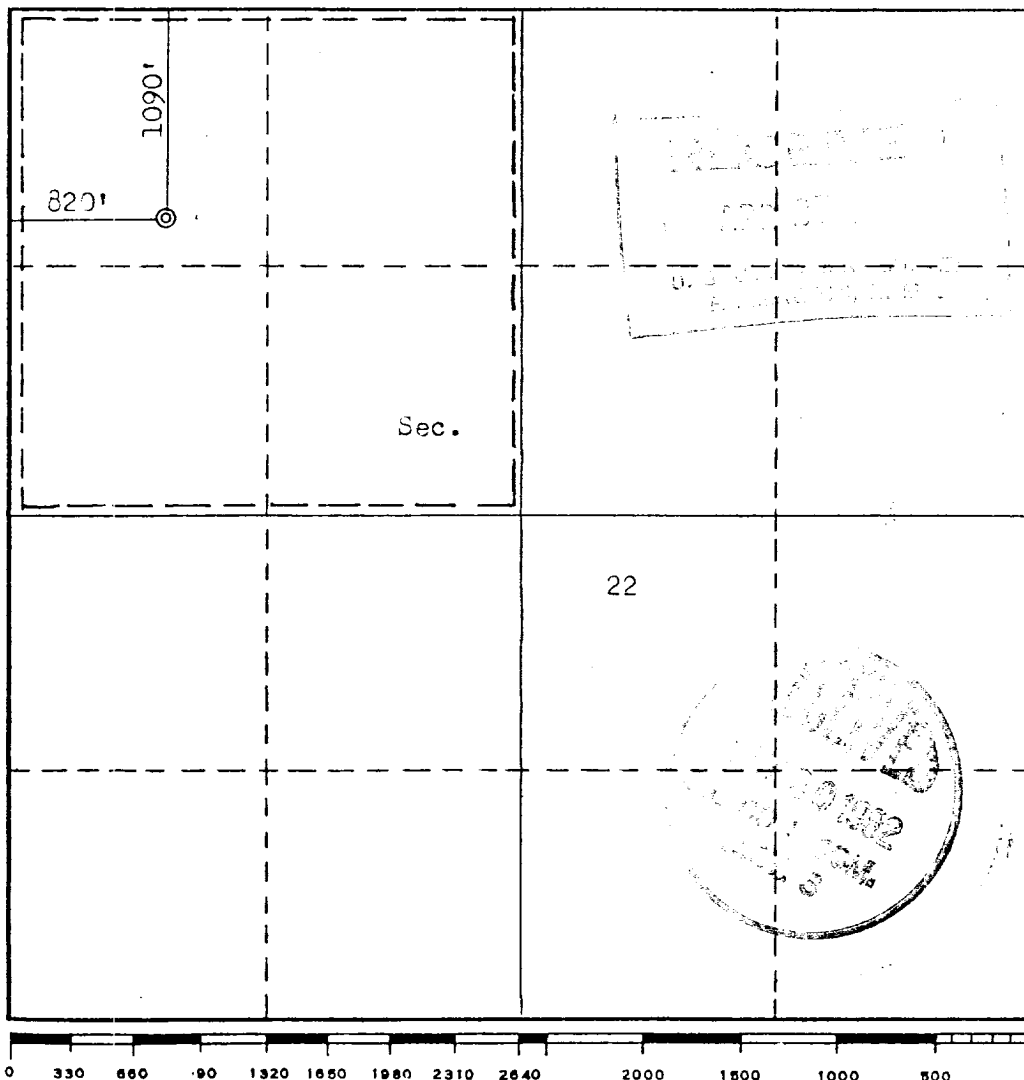
Operator <b>CONOCO, INCORPORATED</b>			Lease <b>NE HAYNES</b>		Well No. <b>14</b>
Unit Letter <b>D</b>	Section <b>22</b>	Township <b>24N</b>	Range <b>5W</b>	County <b>Rio Arriba</b>	
Actual Footage Location of Well: <b>1090</b> feet from the <b>North</b> line and <b>820</b> feet from the <b>West</b> line					
Ground Level Elev. <b>6684</b>	Producing Formation <b>Pictured Cliffs</b>		Pool <b>Balland Pictured Cliffs</b>		Dedicated Acreage: <b>160</b> Acres

1. Outline the acreage dedicated to the subject well by colored pencil or hachure marks on the plat below.
2. If more than one lease is dedicated to the well, outline each and identify the ownership thereof (both as to working interest and royalty).
3. If more than one lease of different ownership is dedicated to the well, have the interests of all owners been consolidated by communitization, unitization, force-pooling, etc?

☐ Yes ☐ No If answer is "yes," type of consolidation \_\_\_\_\_

If answer is "no," list the owners and tract descriptions which have actually been consolidated. (Use reverse side of this form if necessary.) \_\_\_\_\_

No allowable will be assigned to the well until all interests have been consolidated (by communitization, unitization, forced-pooling, or otherwise) or until a non-standard unit, eliminating such interests, has been approved by the Commission.



## CERTIFICATION

I hereby certify that the information contained herein is true and complete to the best of my knowledge and belief.

Name  
**W. A. Burtchfield**  
Position  
**Administrative Supervisor**  
Company  
**Conoco Inc.**

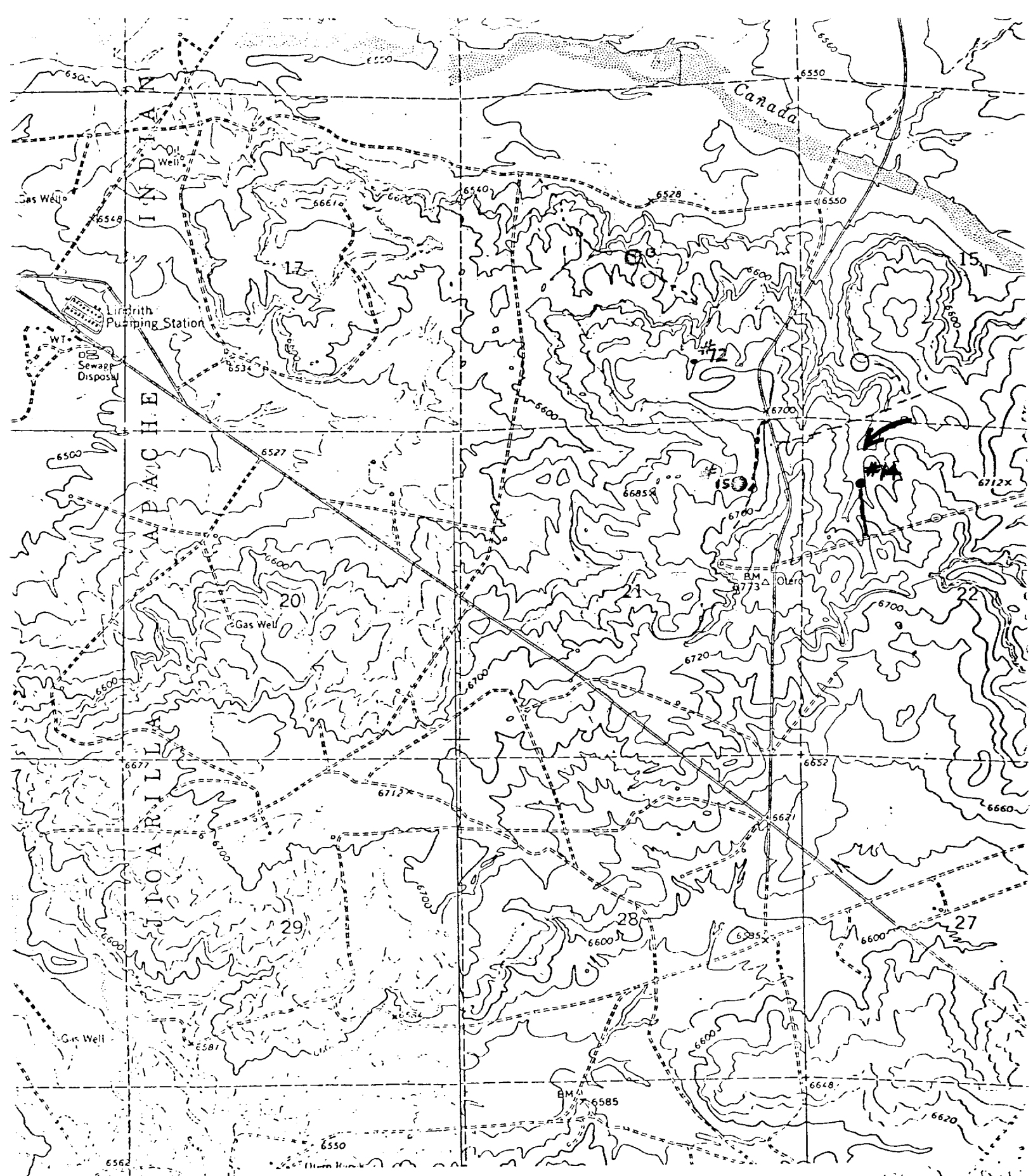
Date  
**April 26, 1982**

I hereby certify that the well location shown on this plat was plotted from field notes of actual surveys made by me or under my supervision, and that the same is true and correct to the best of my knowledge and belief.

Date Surveyed  
**October 1981**  
Registered Professional Engineer and/or Land Surveyor

**Fred B. Kerr Jr.**

Certificate No.  
**3950**



Vicinity Map for  
CONOCO, INC. #14 NE HAYNES  
1090' FNL 820' FWL Sec. 22-T24N-R5W  
RIO ARriba COUNTY, NEW MEXICO

Exhibit A