

UNITED STATES  
DEPARTMENT OF THE INTERIOR  
GEOLOGICAL SURVEY

30-039-23008

## APPLICATION FOR PERMIT TO DRILL, DEEPEN, OR PLUG BACK

## 1a. TYPE OF WORK

DRILL ☒DEEPEN ☐PLUG BACK ☐

## b. TYPE OF WELL

OIL  
WELL ☒GAS  
WELL ☐

OTHER

SINGLE  
ZONE ☒MULTIPLE  
ZONE ☐

## 2. NAME OF OPERATOR

Getty Oil Company

## 3. ADDRESS OF OPERATOR

P.O. Box 3360, Casper, WY 82602

## 4. LOCATION OF WELL (Report location clearly and in accordance with any State requirements)

At surface

970' FSL &amp; 1800' FWL of Sec. 31

At proposed prod. zone

Same

## 14. DISTANCE IN MILES AND DIRECTION FROM NEAREST TOWN OR POST OFFICE

U.S. GEOLOGICAL SURVEY  
FARMINGTON, N. M.

## 15. DISTANCE FROM PROPOSED\*

LOCATION TO NEAREST  
PROPERTY OR LEASE LINE, FT.  
(Also to nearest drlg. unit line, if any)18. DISTANCE FROM PROPOSED LOCATION\*  
TO NEAREST WELL, DRILLING, COMPLETED,  
OR APPLIED FOR, ON THIS LEASE, FT.

## 16. NO. OF ACRES IN LEASE

1935

## 19. PROPOSED DEPTH

8088'

17. NO. OF ACRES ASSIGNED  
TO THIS WELL

178.43

## 20. ROTARY OR CABLE TOOLS

Rotary

## 21. ELEVATIONS (Show whether DF, RT, GR, etc.)

7254' GL

## 22. APPROX. DATE WORK WILL START\*

July 5, 1982

## 23.

## PROPOSED CASING AND CEMENTING PROGRAM

SIZE OF HOLE	SIZE OF CASING	WEIGHT PER FOOT	SETTING DEPTH	QUANTITY OF CEMENT
12 1/4"	8 5/8"	24.0#	300'	*105 sx to cement to surface
7 7/8"	5 1/2"	14.0, 15.5, 17#	8088'	*774 sx to cement to surface

\*Cement volumes will depend on volume calculated from hole caliper. Thirteen point  
Surface Use Plan attached.

Gas is not dedicated.



IN ABOVE SPACE DESCRIBE PROPOSED PROGRAM: If proposal is to deepen or plug back, give data on present productive zone and proposed new productive zone. If proposal is to drill or deepen directionally, give pertinent data on subsurface locations and measured and true vertical depths. Give blowout preventer program, if any.

## 24.

SIGNED

TITLE Area Superintendent

DATE 5-11-82

(This space for Federal or State office use)

PERMIT NO.

APPROVAL DATE

APPROVED BY

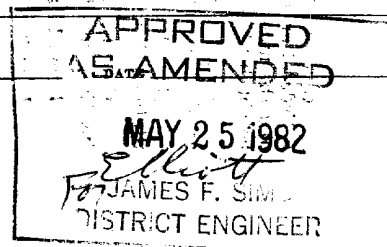
TITLE

CONDITIONS OF APPROVAL, IF ANY:

Hold C 104 for WSP

JH

NMCC



**NEW MEXICO OIL CONSERVATION COMMISSION  
WELL LOCATION AND ACREAGE DEDICATION PLAT**

Form C-102  
Supersedes C-128  
Effective 1-1-65

All distances must be from the outer boundaries of the Section.

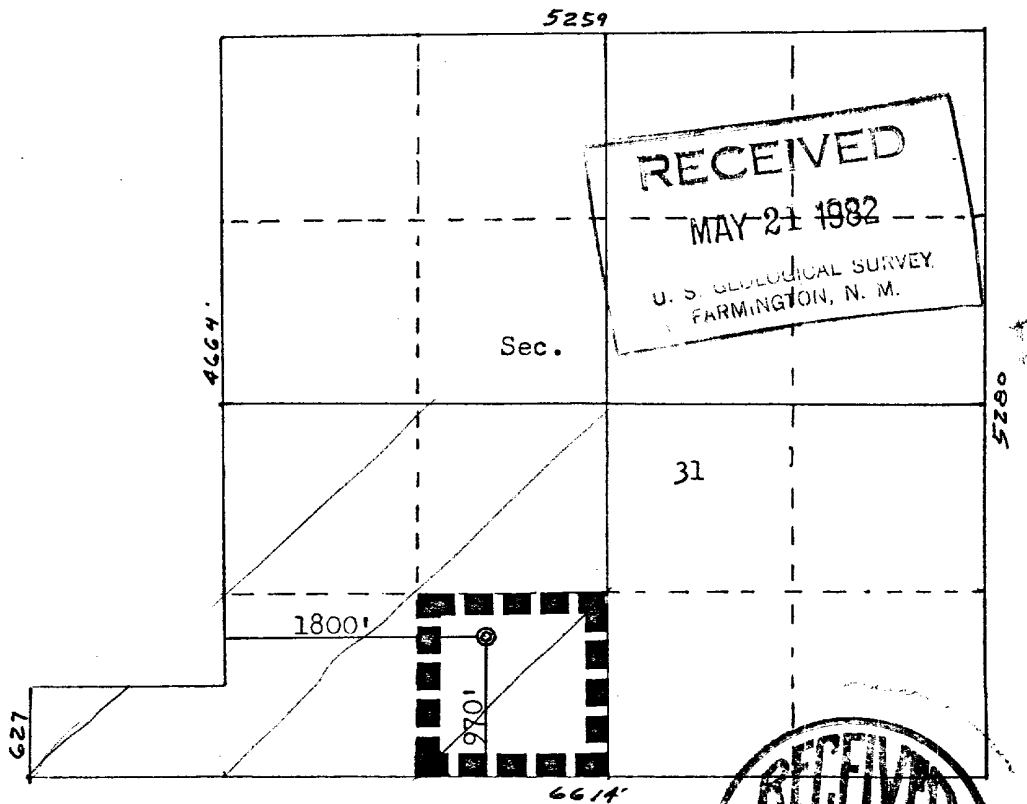
Operator <b>GETTY OIL COMPANY</b>			Lease <b>L. L. McCONNELL</b>		Well No. <b>13</b>
Unit Letter <b>N</b>	Section <b>31</b>	Township <b>25N</b>	Range <b>3W</b>	County <b>Rio Arriba</b>	
Actual Footage Location of Wells <b>970</b> feet from the <b>South</b> line and <b>1800</b> feet from the <b>West</b> line					
Ground Level Elev: <b>7254</b>	Producing Formation <b>Gallup/Dakota</b>	Pool <b>West Lindrith Gallup/Dakota</b>	Dedicated Acreage: <b>178.93</b> Acres		

1. Outline the acreage dedicated to the subject well by colored pencil or hachure marks on the plat below.
2. If more than one lease is dedicated to the well, outline each and identify the ownership thereof (both as to working interest and royalty).
3. If more than one lease of different ownership is dedicated to the well, have the interests of all owners been consolidated by communitization, unitization, force-pooling, etc?

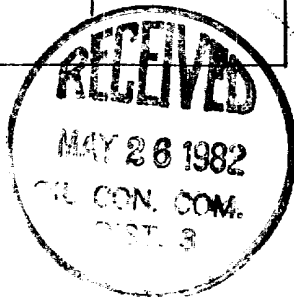
☐ Yes    ☐ No    If answer is "yes," type of consolidation \_\_\_\_\_

If answer is "no," list the owners and tract descriptions which have actually been consolidated. (Use reverse side of this form if necessary.) \_\_\_\_\_

No allowable will be assigned to the well until all interests have been consolidated (by communitization, unitization, forced-pooling, or otherwise) or until a non-standard unit, eliminating such interests, has been approved by the Commission.



Scale: 1"=1320'



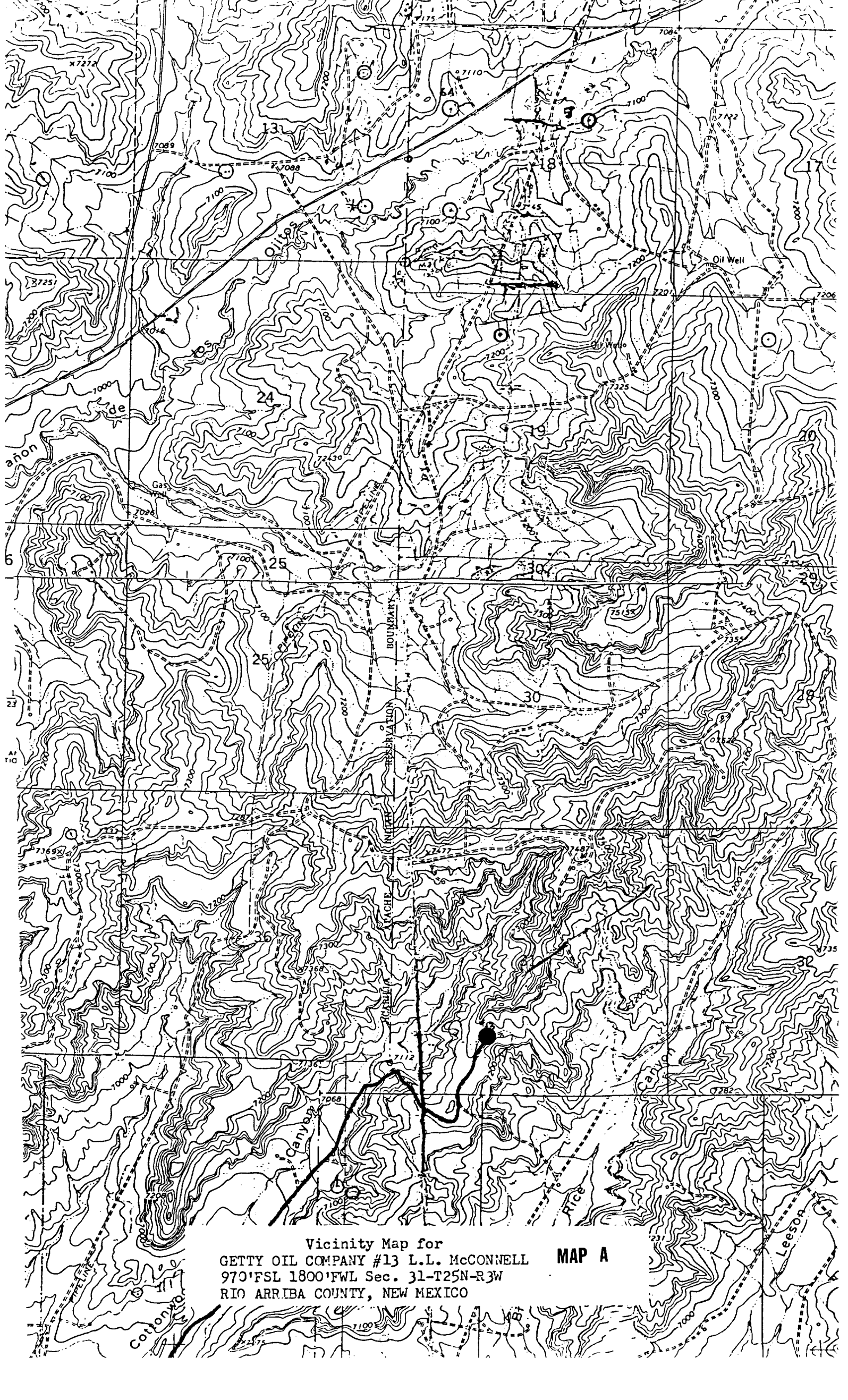
**CERTIFICATION**

I hereby certify that the information contained herein is true and complete to the best of my knowledge and belief.

Name DeW. Bean  
 Position **Area Superintendent**  
 Company **Getty Oil Company**  
 Date **5-12-82**

I hereby certify that the well location shown on this plat was plotted from field notes of actual surveys made by me or under my supervision, and that the same is true and correct to the best of my knowledge and belief.

Date Surveyed **April 24, 1982**  
 Registered Professional Engineer and Land Surveyor  
Fred B. Kerner  
 Certificate No. **3950**



Vicinity Map for  
GETTY OIL COMPANY #13 L.L. McCONNELL  
970'FSL 1800'FWL Sec. 31-T25N-R3W  
RIO ARRIBA COUNTY, NEW MEXICO

MAP A