

DISTRICT I

P.O. Box 1980, Hobbs, NM 88241-1980

DISTRICT II

P.O. Box Drawer DD, Artesia, NM 88211-0719

DISTRICT III

1000 Rio Brazos Rd., Aztec, NM 87410

DISTRICT IV

P.O. Box 2088, Santa Fe, NM 87504-2088

State of New Mexico

Energy, Minerals and Natural Resources Department

OIL CONSERVATION DIVISION

P.O. Box 2088

Santa Fe, New Mexico 87504-2088

Form 8-102

Revised February 10, 1994

Instructions on back

Submit to Appropriate District Office

State Lease - 4 Copies

Fee Lease - 3 Copies

☐ AMENDED REPORT

WELL LOCATION AND ACREAGE DEDICATION PLAT

¹ API Number 3003923008	² Pool Code 39189	³ Pool Name LINDRITH GALLUP-DAKOTA, WEST
⁴ Property Code 017694	⁵ Property Name L L MCCONNELL	⁶ Well No. 13
⁷ OGRID Number 131994	⁸ Operator Name FOUR STAR OIL AND GAS COMPANY	⁹ Elevation 7265' GR - 7278' KB

¹⁰ Surface Location

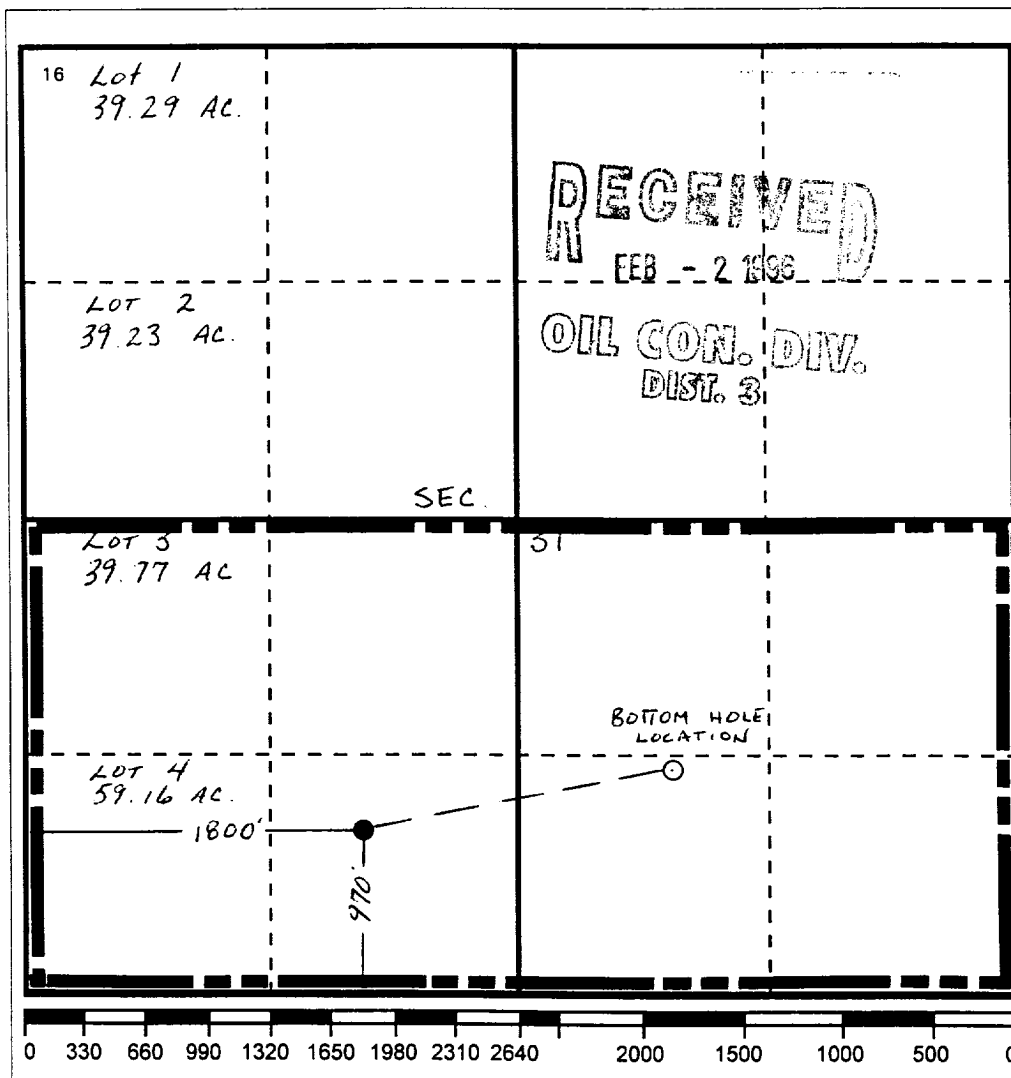
UI or lot no.	Section	Township	Range	Lot.Idn	Feet From The	North/South Line	Feet From The	East/West Line	County
N	31	T25N	R03W		970	SOUTH	1800	WEST	RIO ARRIBA

¹¹ Bottom Hole Location If Different From Surface

UI or lot no.	Section	Township	Range	Lot.Idn	Feet From The	North/South Line	Feet From The	East/West Line	County
O	31	T25N	R03W		1318	SOUTH	3430	WEST	RIO ARRIBA

¹² Dedicated Acre 338.93	¹³ Joint or Infill No	¹⁴ Consolidation Code	¹⁵ Order No. R - 10450
--	-------------------------------------	----------------------------------	--------------------------------------

NO ALLOWABLE WILL BE ASSIGNED TO THIS COMPLETION UNTIL ALL INTERESTS HAVE BEEN CONSOLIDATED
OR A NON-STANDARD UNIT HAS BEEN APPROVED BY THE DIVISION



17 OPERATOR CERTIFICATION

I hereby certify that the information contained herein is true and complete to the best of my knowledge and belief

Signature

Printed Name

Ted A. Tipton

Position

Operating Unit Manager

Date

1/29/06

18 SURVEYOR CERTIFICATION

I hereby certify that the well location shown on this plat was plotted from field notes of actual surveys made by me or under my supervision, and that the same is true and correct to the best of my knowledge and belief.

Date Surveyed

Signature & Seal of

Professional Surveyor

Certificate No.