

UNITED STATES
DEPARTMENT OF THE INTERIOR
GEOLOGICAL SURVEY

APPLICATION FOR PERMIT TO DRILL, DEEPEN, OR PLUG BACK

1a. TYPE OF WORK

DRILL ☒DEEPEN ☐PLUG BACK ☐

b. TYPE OF WELL

OIL
WELL ☒GAS
WELL ☐

OTHER

SINGLE
ZONE ☒MULTIPLE
ZONE ☐

2. NAME OF OPERATOR

Mobil Producing TX. & N.M. Inc.

3. ADDRESS OF OPERATOR

Nine Greenway Plaza, Suite 2700, Houston, TX 77046

4. LOCATION OF WELL (Report location clearly and in accordance with any State requirements.)

At surface 1650' FNL & 800' FWL, Sec. 15, T24N, R3W

At proposed prod. zone

Same as surface

14. DISTANCE IN MILES AND DIRECTION FROM NEAREST TOWN OR POST OFFICE*

50 miles Southeast from Farmington, NM

15. DISTANCE FROM PROPOSED*

LOCATION TO NEAREST

PROPERTY OR LEASE LINE, FT.

(Also to nearest drlg. unit line, if any)

6100'±

(800'±)

16. NO. OF ACRES IN LEASE

26,365.43

17. NO. OF ACRES ASSIGNED
TO THIS WELL

160

18. DISTANCE FROM PROPOSED LOCATION*

TO NEAREST WELL, DRILLING, COMPLETED,
OR APPLIED FOR, ON THIS LEASE, FT.

2655'± WSW

to Well #23

19. PROPOSED DEPTH

7880

20. ROTARY OR CABLE TOOLS

Rotary

21. ELEVATIONS (Show whether DF, RT, GR, etc.)

7016' GR

22. APPROX. DATE WORK WILL START*

As soon as possible

23.

PROPOSED CASING AND CEMENTING PROGRAM

SIZE OF HOLE	SIZE OF CASING	WEIGHT PER FOOT	SETTING DEPTH	QUANTITY OF CEMENT
17-1/2"	13-3/8"*	48# H-40	0 - 400'	1. Circulate to surface
11"	8-5/8"*	24# K-55	0 - 2300'	2. Circulate to surface
		32# K-55	2300 - 3300'	
7-7/8"	4-1/2"*	10.5# K-55	0 - 1600'	
		9.5# K-55	1600 - 5500'	3. Circulate to approximately
		10.5# K-55	5500 - 7000'	2600'
		11.6# K-55	7000 - 7780'	

*All casing will be new.

CEMENTING PROGRAM

1. Class B with 2% CaCl₂

2. Howco Lite Weight & Class B

3. Howco Lite & Class B

MUD PROGRAM

Depth

Type Mud

0 - 400'

Spud Mud

Weight

9.0 - 9.2

Viscosity

35 - 45

pH

9.0+

Water Loss

NC

400 - TD

Fresh Gel

8.8 - 9.3

35 - 40

9.0+

10 cc's

BLOWOUT PREVENTER PROGRAM

See attachment

LOGGING PROGRAM:

Type

SP-IEL

GR-CND

Depth

TD-Top

TD-Top

IN ABOVE SPACE DESCRIBE PROPOSED PROGRAM: If proposal is to deepen or plug back, give data on present productive zone and proposed new productive zone. If proposal is to drill or deepen directionally, give pertinent data on subsurface locations and measured and true vertical depths. Give blowout preventer program, if any.

24. *J.A. Morris*

J.A. Morris

Regulatory Engineering

TITLE Supervisor

DATE May 14, 1982

(This space for Federal or State office use)

PERMIT NO.

APPROVAL DATE

APPROVED BY

TITLE

CONDITIONS OF APPROVAL, IF ANY:

APPROVED
AS AMENDED

DATE JUL 1 1982

JAMES F. SIMS
DISTRICT ENGINEER

*See Instructions On Reverse Side

**NEW MEXICO OIL CONSERVATION COMMISSION
WELL LOCATION AND ACREAGE DEDICATION PLAT**

Form C-102
Supersedes C-128
Effective 1-1-65

All distances must be from the outer boundaries of the Section.

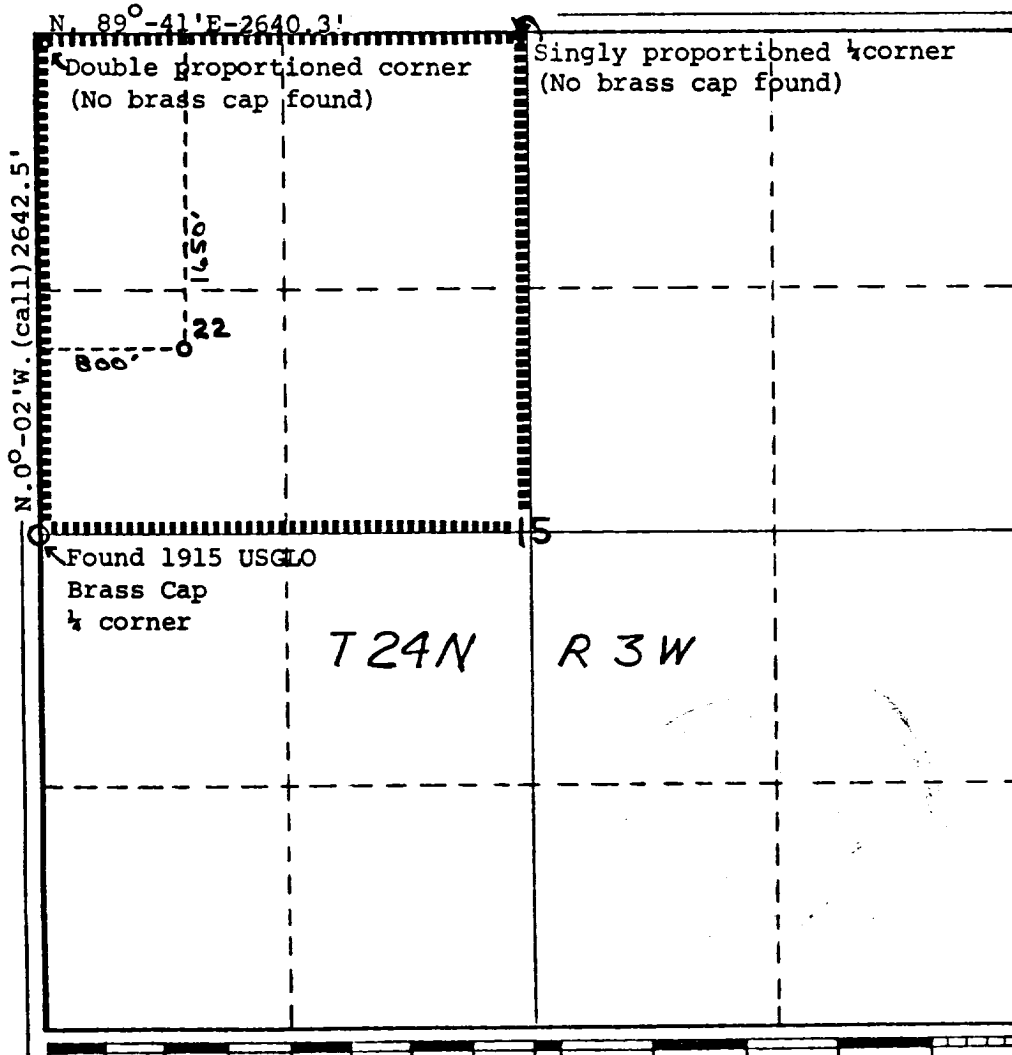
Operator Mobil Producing TX. & N.M. Inc.			Lease Lindrith B Unit		Well No. 22
Unit Letter E	Section 15	Township 24N	Range 3W	County Rio Arriba	
Actual Footage Location of Well: 1650 feet from the North line and 800 feet from the West line					
Ground Level Elev. 7016'	Producing Formation Dakota	Pool Chacon-Dakota Associated		Dedicated Acreage: 160 Acres	

1. Outline the acreage dedicated to the subject well by colored pencil or hachure marks on the plat below.
2. If more than one lease is dedicated to the well, outline each and identify the ownership thereof (both as to working interest and royalty).
3. If more than one lease of different ownership is dedicated to the well, have the interests of all owners been consolidated by communitization, unitization, force-pooling, etc?

☒ Yes ☐ No If answer is "yes," type of consolidation Unitization

If answer is "no," list the owners and tract descriptions which have actually been consolidated. (Use reverse side of this form if necessary.) _____

No allowable will be assigned to the well until all interests have been consolidated (by communitization, unitization, forced-pooling, or otherwise) or until a non-standard unit, eliminating such interests, has been approved by the Commission.



CERTIFICATION

I hereby certify that the information contained herein is true and complete to the best of my knowledge and belief.

A.D. Bond

Name
A.D. Bond
Position **Regulatory Engineering Coordinator II**

Company **Mobil Producing TX. & N.M. Inc.**

Date
May 14, 1982

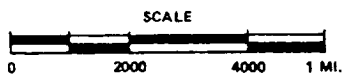
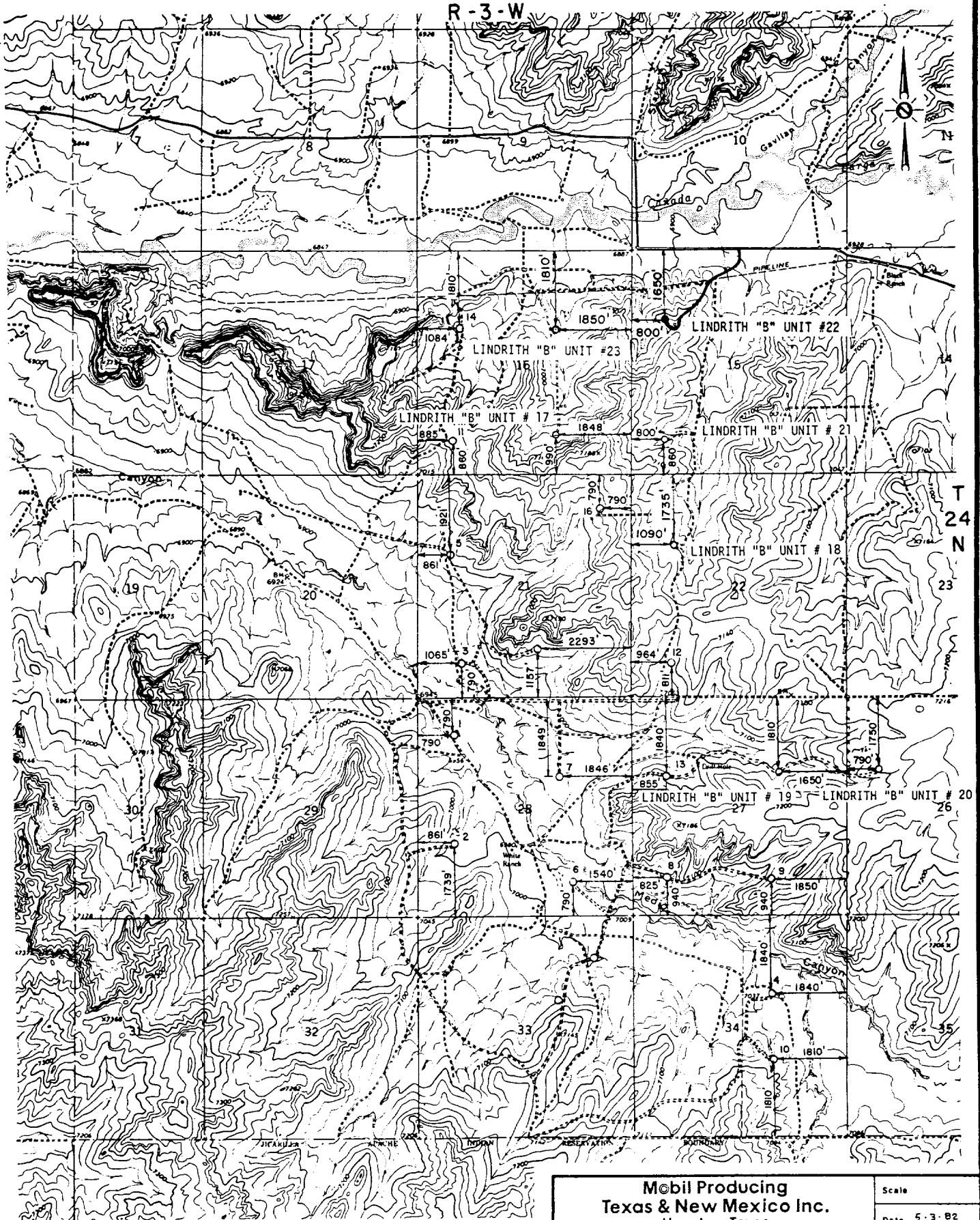
I hereby certify that the well location shown on this plat was plotted from field notes of actual surveys made by me or under my supervision and that the same is true and correct to the best of my knowledge and belief.

H.A. Carson Jr.
Date Surveyed
April 27, 1982

Registered Professional Engineer and/or Land Surveyor

H.A. Carson, Jr.
Certificate No.

R-3-W



Mobil Producing
Texas & New Mexico Inc.
Houston, Texas

LINDRITH "B" UNIT
VICINITY PLAT
RIO ARRIBA CO., NEW MEXICO
MAP "B"

Scale

Date 5-3-82
Drawn J.W.J.
Checked
Approved
Revised