

UNITED STATES  
DEPARTMENT OF THE INTERIOR  
GEOLOGICAL SURVEY

## APPLICATION FOR PERMIT TO DRILL, DEEPEN, OR PLUG BACK

1a. TYPE OF WORK  
DRILL ☒ DEEPEN ☐ PLUG BACK ☐

b. TYPE OF WELL  
OIL WELL ☒ GAS WELL ☐ OTHER ☐ SINGLE ZONE ☒ MULTIPLE ZONE ☐

2. NAME OF OPERATOR  
Mobil Producing TX. & N.M. Inc.

3. ADDRESS OF OPERATOR  
Nine Greenway Plaza, Suite 2700, Houston, TX 77046

4. LOCATION OF WELL (Report location clearly and in accordance with any State requirements.)\*  
At surface 1810' FNL & 1850' FEL, Sec. 16, T24N, R3W  
At proposed prod. zone Same as surface

14. DISTANCE IN MILES AND DIRECTION FROM NEAREST TOWN OR POST OFFICE\*  
50 miles Southeast from Farmington, NM

15. DISTANCE FROM PROPOSED\* LOCATION TO NEAREST PROPERTY OR LEASE LINE, FT. (Also to nearest drilg. unit line, if any)  
3500'± (786')

16. NO. OF ACRES IN LEASE  
26,365.43

17. NO. OF ACRES ASSIGNED TO THIS WELL  
160

18. DISTANCE FROM PROPOSED LOCATION\* TO NEAREST WELL, DRILLING, COMPLETED, OR APPLIED FOR, ON THIS LEASE, FT.  
2338'± West to Well #14

19. PROPOSED DEPTH  
7800'

20. ROTARY OR CABLE TOOLS  
Rotary

21. ELEVATIONS (Show whether DF, RT, GR, etc.)  
6927' GR

22. APPROX. DATE WORK WILL START\*  
As soon as possible

## 23. PROPOSED CASING AND CEMENTING PROGRAM

| SIZE OF HOLE | SIZE OF CASING | WEIGHT PER FOOT | SETTING DEPTH | QUANTITY OF CEMENT            |
|--------------|----------------|-----------------|---------------|-------------------------------|
| 17-1/4"      | 13-3/8"*       | 48# H-40        | 0 - 400'      | 1. Circulate to surface       |
| 11"          | 8-5/8"*        | 24# K-55        | 0 - 2300'     | 2. Circulate to surface       |
|              |                | 32# K-55        | 2300 - 3300'  |                               |
| 7-7/8"       | 4-1/2"*        | 10.5# K-55      | 0 - 1600'     | 3. Circulate to approximately |
|              |                | 9.5# K-55       | 1600 - 5500'  | 2600'                         |
|              |                | 10.5# K-55      | 5500 - 7000'  |                               |
|              |                | 11.6# K-55      | 7000 - 7780'  |                               |

\*All casing will be new.

## CEMENTING PROGRAM

1. Class B with 2% CaCl<sub>2</sub>

2. Howco Lite Weight &amp; Class B

3. Howco Lite &amp; Class B

## MUD PROGRAM

| Depth    | Type Mud  | Weight    | Viscosity | pH   | Water Loss |
|----------|-----------|-----------|-----------|------|------------|
| 0 - 400' | Spud Mud  | 9.0 - 9.2 | 35 - 45   | 9.0+ | NC         |
| 400 - TD | Fresh Gel | 8.8 - 9.3 | 35 - 40   | 9.0+ | 10 cc's    |

## BLOWOUT PREVENTER PROGRAM

See attachment

## LOGGING PROGRAM:

| Type   | Depth  |
|--------|--------|
| SP-IEL | TD-Top |
| GR-CND | TD-Top |

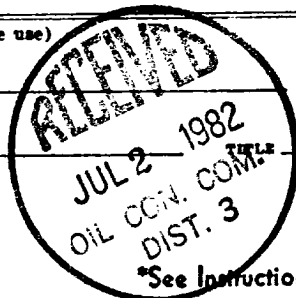
IN ABOVE SPACE DESCRIBE PROPOSED PROGRAM: If proposal is to deepen or plug back, give data on present productive zone and proposed new productive zone. If proposal is to drill or deepen directionally, give pertinent data on subsurface locations and measured and true vertical depths. Give blowout preventer program, if any.

24. J.A. Morris Regulatory Engineering  
SIGNED J.A. Morris TITLE Supervisor DATE May 14, 1982

(This space for Federal or State office use)

PERMIT NO. \_\_\_\_\_

APPROVAL DATE \_\_\_\_\_

APPROVED BY \_\_\_\_\_  
CONDITIONS OF APPROVAL, IF ANY: \_\_\_\_\_APPROVED  
DATE  
IS AMENDEDJUL 1 1982  
For JAMES F. SIMS  
DISTRICT ENGINEER

NEW MEXICO OIL CONSERVATION COMMISSION  
WELL LOCATION AND ACREAGE DEDICATION PLAT

Form C-102  
Supersedes C-128  
Effective 1-1-65

All distances must be from the outer boundaries of the Section.

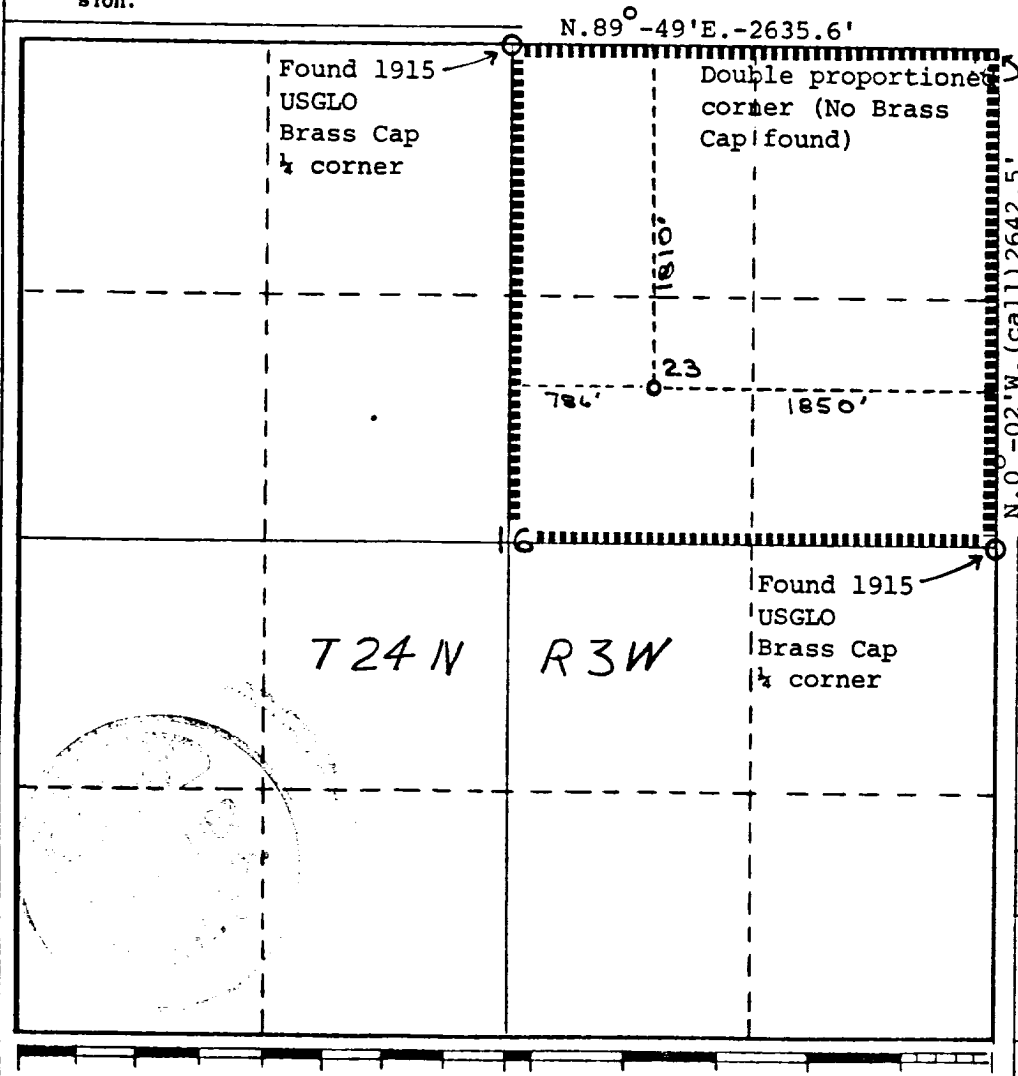
|  |                               |                 |                                  |                                 |                |
|--|-------------------------------|-----------------|----------------------------------|---------------------------------|----------------|
| Operator<br>Mobil Producing TX. & N.M. Inc.  |                               |                 | Lease<br>Lindrith B Unit         |                                 | Well No.<br>23 |
| Unit Letter<br>G   | Section<br>16                 | Township<br>24N | Range<br>3W                      | County<br>Rio Arriba            |                |
| Actual Footage Location of Well:<br>1810 feet from the North line and 1850 feet from the East line |                               |                 |                                  |                                 |                |
| Ground Level Elev.<br>6927'  | Producing Formation<br>Dakota |                 | Pool<br>Chacon-Dakota Associated | Dedicated Acreage:<br>160 Acres |                |

1. Outline the acreage dedicated to the subject well by colored pencil or hachure marks on the plat below.
2. If more than one lease is dedicated to the well, outline each and identify the ownership thereof (both as to working interest and royalty).
3. If more than one lease of different ownership is dedicated to the well, have the interests of all owners been consolidated by communitization, unitization, force-pooling, etc?

☒ Yes ☐ No If answer is "yes," type of consolidation Unitization

If answer is "no," list the owners and tract descriptions which have actually been consolidated. (Use reverse side of this form if necessary.)

No allowable will be assigned to the well until all interests have been consolidated (by communitization, unitization, forced-pooling, or otherwise) or until a non-standard unit, eliminating such interests, has been approved by the Commission.



CERTIFICATION

I hereby certify that the information contained herein is true and complete to the best of my knowledge and belief.

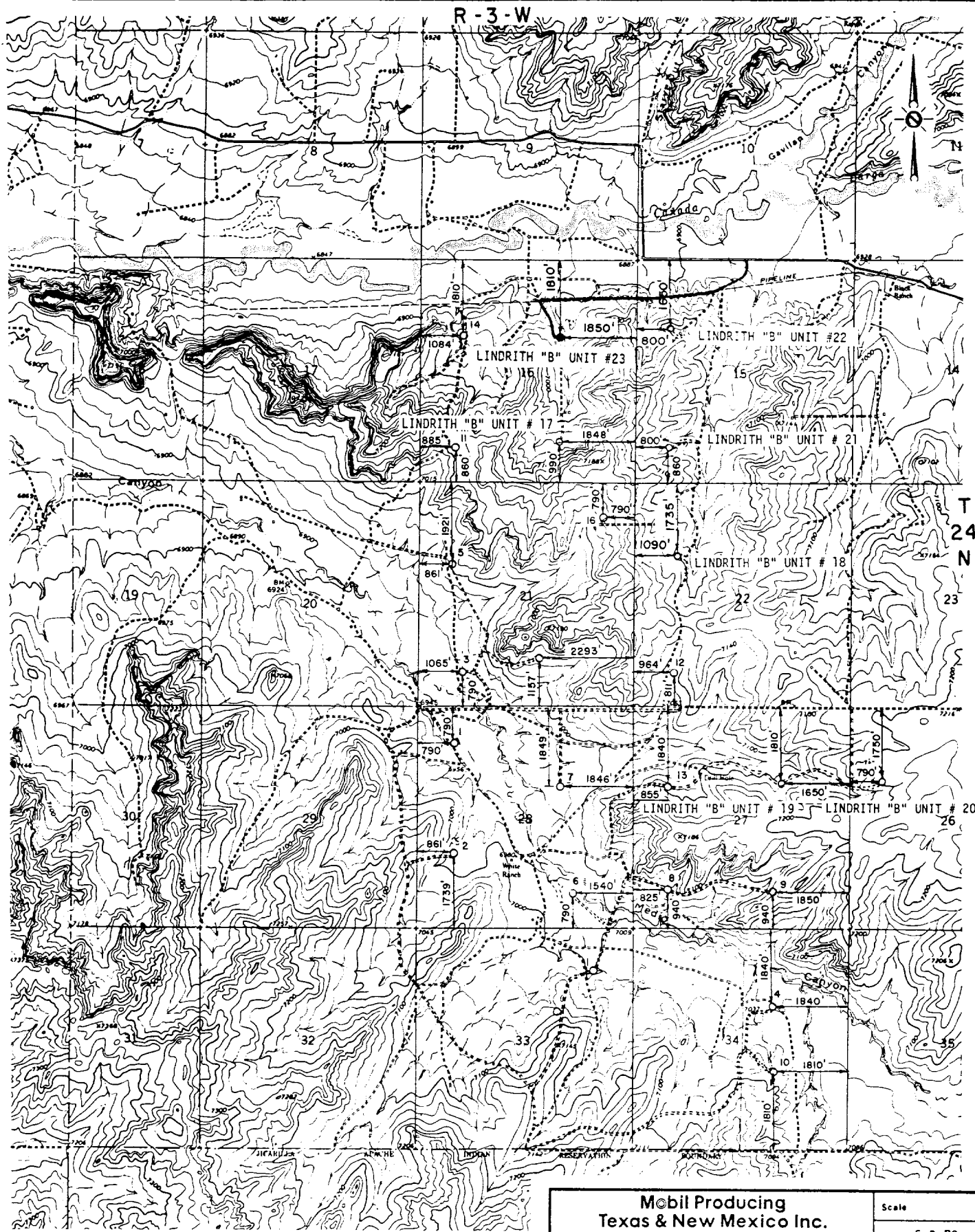
Name  
A.D. Bond  
Position  
Regulatory  
Engineering Coordinator II  
Company  
Mobil Producing  
TX. & N.M. Inc.  
Date  
May 14, 1982

I hereby certify that the well location shown on this plat was plotted from field notes of actual surveys made by me or under my supervision and that the same is true and correct to the best of my knowledge and belief.

Date Surveyed  
April 27, 1982  
Registered Professional Engineer  
and/or Land Surveyor

H.A. Carson, Jr.

Certificate No.  
5063



**Mobil Producing  
Texas & New Mexico Inc.  
Houston, Texas**

LINDRITH "B" UNIT  
VICINITY PLAT  
RIO ARRIBA CO., NEW MEXICO  
MAP "B"

Scale

Date 5-3-82  
Drawn J.W.V.  
Checked  
Approved  
Revised

