

UNITED STATES  
DEPARTMENT OF THE INTERIOR  
GEOLOGICAL SURVEY

## APPLICATION FOR PERMIT TO DRILL, DEEPEN, OR PLUG BACK

## 1a. TYPE OF WORK

DRILL ☒DEEPEN ☐PLUG BACK ☐

## b. TYPE OF WELL

OIL  
WELL ☐GAS  
WELL ☒

OTHER

SINGLE  
ZONE ☒MULTIPLE  
ZONE ☐

## 2. NAME OF OPERATOR

Robert L. Bayless

## 3. ADDRESS OF OPERATOR

P.O. Box 1541, Farmington, NM 87401

## 4. LOCATION OF WELL (Report location clearly and in accordance with any State requirements.)

At surface

990' FSL &amp; 990' FWL

At proposed prod. zone same

## 14. DISTANCE IN MILES AND DIRECTION FROM NEAREST TOWN OR POST OFFICE\*

## 15. DISTANCE FROM PROPOSED\*

LOCATION TO NEAREST  
PROPERTY OR LEASE LINE, FT.  
(Also to nearest drlg. unit line, if any)

## 16. NO. OF ACRES IN LEASE

2560

17. NO. OF ACRES ASSIGNED  
TO THIS WELL

160

18. DISTANCE FROM PROPOSED LOCATION\*  
TO NEAREST WELL, DRILLING, COMPLETED,  
OR APPLIED FOR, ON THIS LEASE, FT.

## 19. PROPOSED DEPTH

7210 ft.

## 20. ROTARY OR CABLE TOOLS

Rotary

## 21. ELEVATIONS (Show whether DF, RT, GR, etc.)

6786 ft. GL

## 22. APPROX. DATE WORK WILL START\*

July 13, 1982

## 23.

## PROPOSED CASING AND CEMENTING PROGRAM

SIZE OF HOLE	SIZE OF CASING	WEIGHT PER FOOT	SETTING DEPTH	QUANTITY OF CEMENT
12-1/4"	8-5/8"	20#/ft.	225 ft.	100 sacks, circulated to surface
7-7/8"	4-1/2"	11.6#/ft.	7210 ft.	950 sacks

Will drill 12-1/4" hole to 225 ft. and set 225 ft. of 8-5/8", 20#/ft., J-55 used casing and cement with 100 sacks Class "B" cement w/2% CaCl. Cement will be circulated to surface. Will drill to 7210 ft. and run logs. If appears productive, will run 7210 ft. of 4-1/2", 11.6#/ft., J-55 new casing with cementing stage collar at 5100 ft. Will cement long string as follows: 1st stage: 150 sacks Class "B" w/2% econofil followed by 350 sacks Class "B" neat cement; 2nd stage: 200 sacks Class "B" w/2% econofil followed by 250 sacks Class "B" neat cement to cover Ojo Alamo formation. Will perforate and stimulate as required. No abnormal pressures or temperatures are anticipated. Circulation medium will be clear water, natural mud and water loss additives. Blowout preventer schematic is attached. The gas from this formation is dedicated.

## ESTIMATED TOPS

Base of Ojo Alamo: 2404	Point Lookout: 4906
Pictured Cliffs: 2743	Gallup: 5478
Cliffhouse: 4163	Greenhorn: 6888
Menefee: 4380	Dakota: 6960

IN ABOVE SPACE DESCRIBE PROPOSED PROGRAM: If proposal is to deepen or plug back, give data on present productive zone and proposed new productive zone. If proposal is to drill or deepen directionally, give pertinent data on subsurface locations and measured and true vertical depths. Give blowout preventer program, if any.

## 24.

SIGNED

TITLE

Operator

DATE

June 18, 1982

(This space for Federal or State office use)

PERMIT NO.

APPROVAL DATE

APPROVED BY

TITLE

CONDITIONS OF APPROVAL, IF ANY:

APPROVED

AS AMENDED

DATE

JUN 28 1982

JAMES F. SIM  
DISTRICT ENGINEER

NMOCC

## OIL CONSERVATION DIVISION

P. O. BOX 2088

SANTA FE, NEW MEXICO 87501

Form C-102

Revised 10-1-78

STATE OF NEW MEXICO

ENERGY AND MINERALS DEPARTMENT

All distances must be from the outer boundaries of the Section.

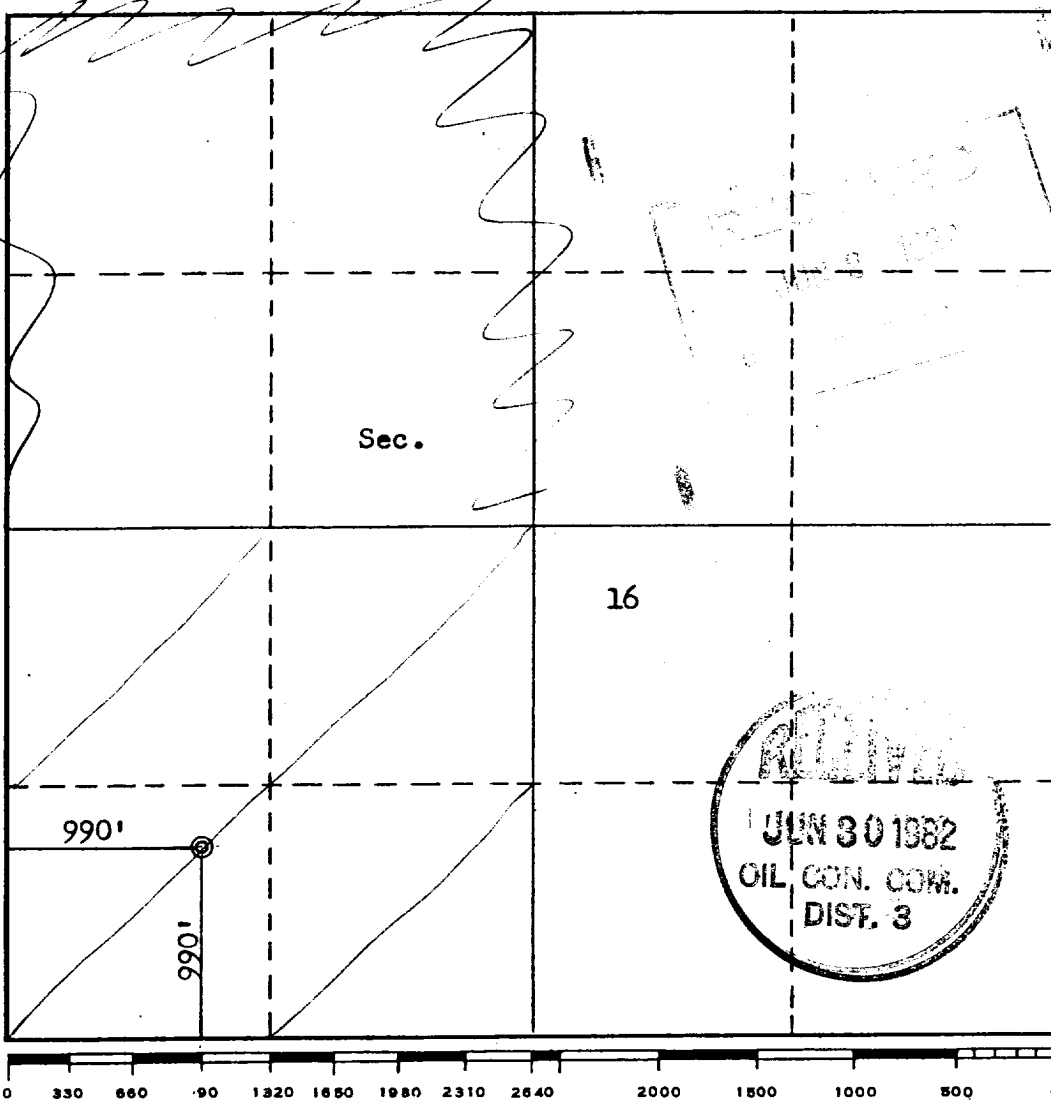
Operator <b>R. L. BAYLESS</b>			Lease <b>JICARILLA 363 "B"</b>		Well No. <b>1</b>
Unit Letter <b>M</b>	Section <b>16</b>	Township <b>24N</b>	Range <b>4W</b>	County <b>Rio Arriba</b>	
Actual Footage Location of Well: <b>990</b> feet from the <b>South</b> line and <b>990</b> feet from the <b>West</b> line					
Ground Level Elev. <b>6786</b>	Producing Formation <b>Dakota</b>		Pool <b>W</b> <b>Lindrith Gallup/Dakota</b>	Dedicated Acreage: <b>160</b> Acres	

1. Outline the acreage dedicated to the subject well by colored pencil or hatchure marks on the plat below.
2. If more than one lease is dedicated to the well, outline each and identify the ownership thereof (both as to working interest and royalty).
3. If more than one lease of different ownership is dedicated to the well, have the interests of all owners been consolidated by communitization, unitization, force-pooling, etc?

☐ Yes ☐ No If answer is "yes," type of consolidation \_\_\_\_\_

If answer is "no," list the owners and tract descriptions which have actually been consolidated. (Use reverse side of this form if necessary.) \_\_\_\_\_

No allowable will be assigned to the well until all interests have been consolidated (by communitization, unitization, forced-pooling, or otherwise) or until a non-standard unit, eliminating such interests, has been approved by the Commission.



## CERTIFICATION

I hereby certify that the information contained herein is true and complete to the best of my knowledge and belief.

Name

**Robert L. Bayless**

Position

**Operator**

Company

**Robert L. Bayless**

Date

**June 18, 1982**

I hereby certify that the well location shown on this plat was plotted from field notes of actual surveys made by me or under my supervision, and that the same is true and correct to the best of my knowledge and belief.

Date Surveyed

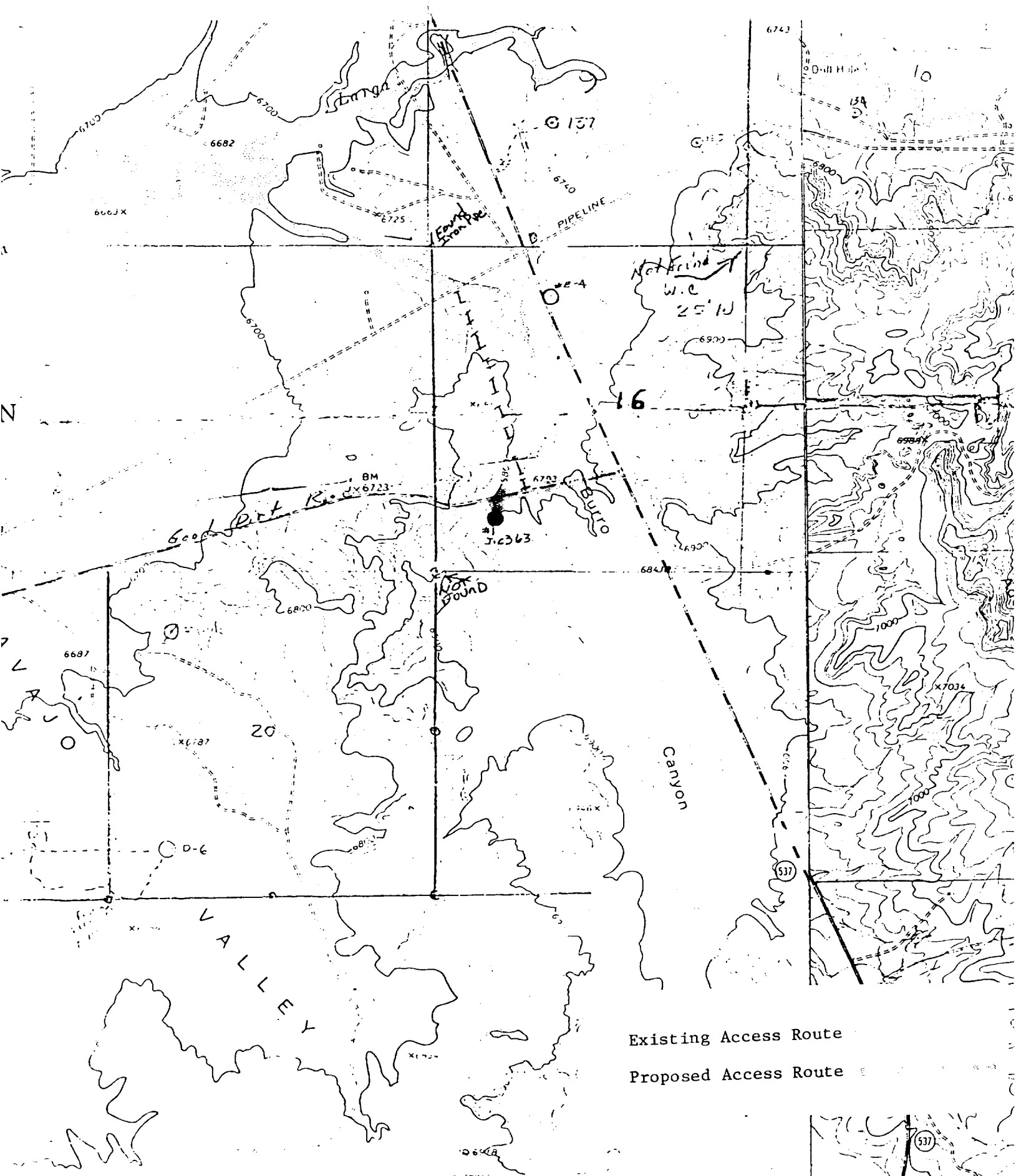
**June 18, 1982**

Registered Professional Engineer and/or Land Surveyor

**Fred B. Kerr Jr.**

Certificate No.

**3950****F. B. KERR, JR.**



Existing Access Route  
Proposed Access Route

Vicinity Map for  
R. L. BAYLESS #1 JICARILLA 363 "B"  
990' FSL 990' FWL Sec. 16-T24N-R4W  
RIO ARriba COUNTY, NEW MEXICO