

## OIL CONSERVATION DIVISION

STATE OF NEW MEXICO  
ENERGY AND MINERALS DEPARTMENTP. O. BOX 2088  
SANTA FE, NEW MEXICO 87501Form C-102  
Revised 10-1-78

All distances must be from the outer boundaries of the Section.

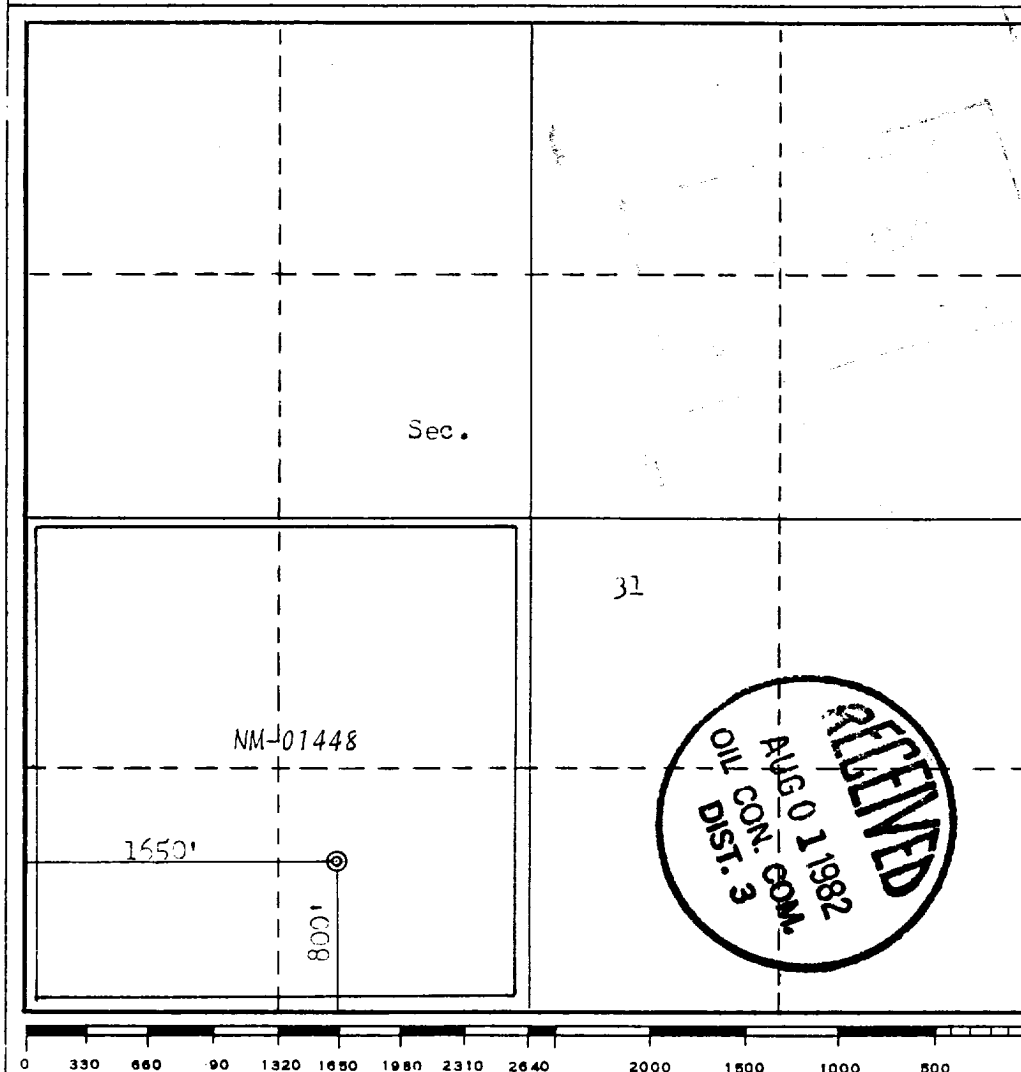
Operator <b>SOUTHLAND ROYALTY COMPANY</b>			Lease <b>CAPULEN MESA</b>		Well No. <b>2</b>
Unit Letter <b>N</b>	Section <b>31</b>	Township <b>25N</b>	Range <b>1W</b>	County <b>Rio Arriba</b>	
Actual Footage Location of Well: <b>800</b> feet from the <b>South</b> line and <b>1650</b> feet from the <b>West</b> line					
Ground Level Elev. <b>7424</b>	Producing Formation <b>Pictured Cliffs</b>		Pool <b>Gavilan Ex.</b>	Dedicated Acreage: <b>160.14</b> Acres	

1. Outline the acreage dedicated to the subject well by colored pencil or hachure marks on the plat below.
2. If more than one lease is dedicated to the well, outline each and identify the ownership thereof (both as to working interest and royalty).
3. If more than one lease of different ownership is dedicated to the well, have the interests of all owners been consolidated by communitization, unitization, force-pooling, etc?

☐ Yes ☐ No If answer is "yes," type of consolidation \_\_\_\_\_

If answer is "no," list the owners and tract descriptions which have actually been consolidated. (Use reverse side of this form if necessary.) \_\_\_\_\_

No allowable will be assigned to the well until all interests have been consolidated (by communitization, unitization, forced-pooling, or otherwise) or until a non-standard unit, eliminating such interests, has been approved by the Commission.



## CERTIFICATION

I hereby certify that the information contained herein is true and complete to the best of my knowledge and belief.

*R. E. Fielder*

Name

R. E. Fielder

Position

District Engineer

Company

Southland Royalty Company

Date

July 1, 1982

I hereby certify that the well location shown on this plat was plotted from field notes of actual surveys made by me or under my supervision, and that the same is true and correct to the best of my knowledge and belief.

Date Surveyed

April 2, 1982  
 Registered Professional Engineer  
 and/or Land Surveyor

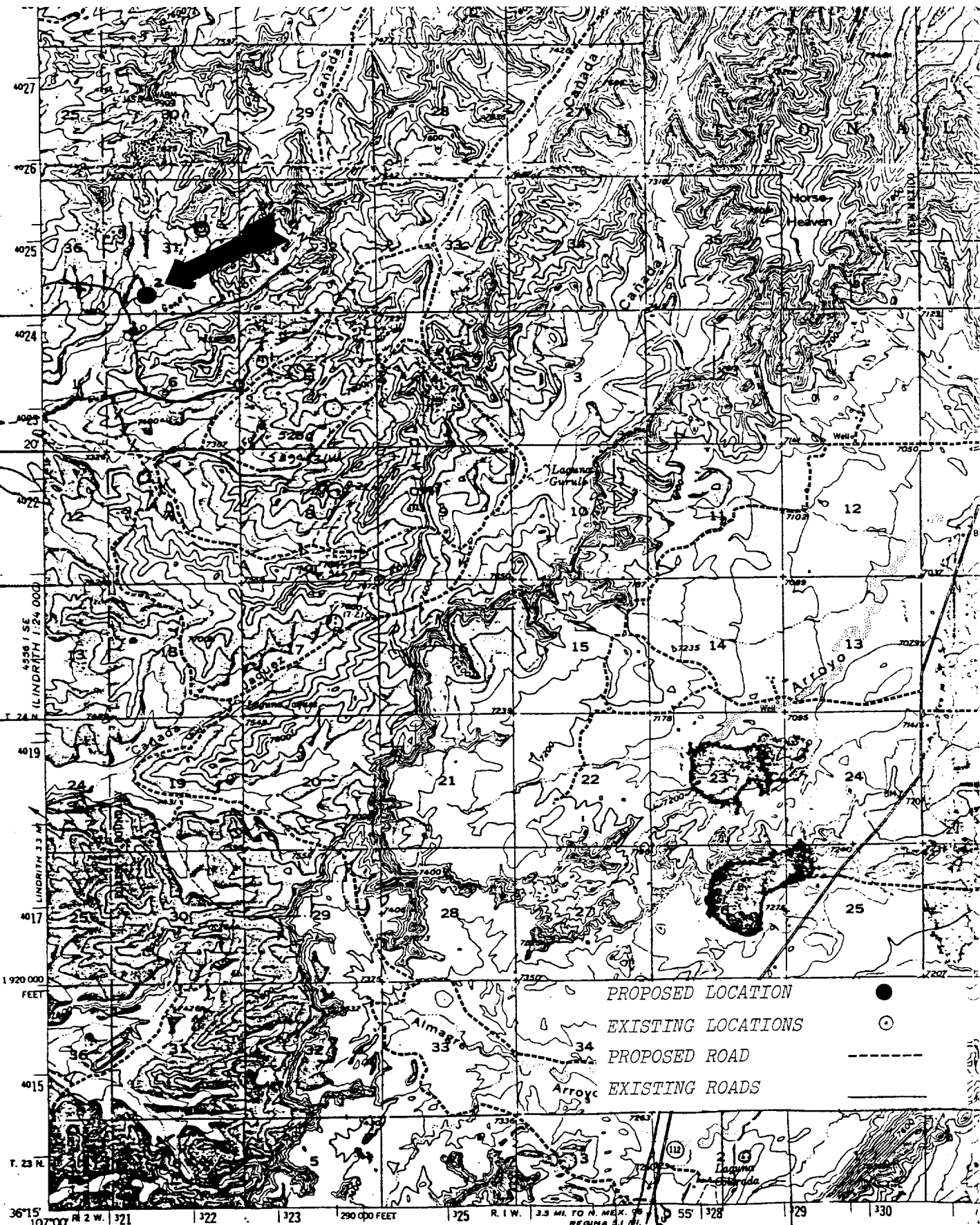
*Fred B. Kerr Jr.*  
 Fred B. Kerr Jr.

Certificate No.

3950

F. B. KERR, JR.

T9 Lindero Hwy  
2 1/2 miles  
2.715.0



Mapped, edited, and published by  
Control by USGS and USC  
Topography from aerial photographs taken 1951  
Aerial photographs taken 1951  
Polyconic projection. 1927  
10,000-foot grid based on central zone

Vicinity Map for  
SOUTHLAND ROYALTY COMPANY #2 CAPULIN MESA  
800' FSL 1650' FWL Sec. 31-T25N-R1W  
RIO ARRIBA COUNTY, NEW MEXICO

Certain land lines unsurveyed in T. 24 and 26 N. R. 2 E.,  
T. 25 and 26 N. R. 1 W., and T. 26 N. R. 1 E.  
1000-meter Universal Transverse Mercator grid ticks,  
UTM GRID AND 1955 MAGNETIC DECLINATION AT CENTER OF SHEET.

20 MILES  
UTM GRID AND 1955 MAGNETIC DECLINATION AT CENTER OF SHEET.

