

UNITED STATES  
DEPARTMENT OF THE INTERIOR  
BUREAU OF LAND MANAGEMENT

FORM APPROVED  
Budget Bureau No. 1004-0135  
Expires: March 31, 1993

SUNDRY NOTICES AND REPORTS ON WELLS

Do not use this form for proposals to drill or to deepen or reentry to a different reservoir.

Use "APPLICATION FOR PERMIT -" for such proposals

SUBMIT IN TRIPLICATE

1. Type of Well

☐ Oil Well ☒ Gas Well ☐ Other

2. Name of Operator

Taurus Exploration, U.S.A., Inc.

3. Address and Telephone No.

2198 Bloomfield Highway; Farmington, NM 87401

4. Location of Well (Footage, Sec., T., R., M., or Survey Description)

800' FSL, 1650' FWL, Sec. 31, T25N, R1W, NMPM

5. Lease Designation and Serial No.

NM-42417

6. If Indian, Allottee or Tribe Name

7. If Unit or CA, Agreement Designation

8. Well Name and No.

Capulin Mesa #2

9. API Well No.

30-039-23049

10. Field and Pool, or exploratory Area

Gavilan Pictured Cliffs

11. County or Parish, State

Rio Arriba NM

12. CHECK APPROPRIATE BOX(S) TO INDICATE NATURE OF NOTICE, REPORT, OR OTHER DATA

TYPE OF SUBMISSION

- ☒ Notice of Intent  
☐ Subsequent Report  
☐ Final Abandonment Notice

TYPE OF ACTION

- ☒ Abandonment  
☐ Recompletion  
☐ Plugging Back  
☐ Casing Repair  
☐ Altering Casing  
☐ Other

- ☐ Change of Plans  
☐ New Construction  
☐ Non-Routine Fracturing  
☐ Water Shut-Off  
☐ Conversion to Injection  
☐ Dispose Water

(Note: Report results of multiple completion on Well Completion or Recompletion Report and Log form.)

13. Describe Proposed or Completed Operations (Clearly state all pertinent details, and give pertinent dates, including estimated date of starting any proposed work. If well is directionally drilled, give subsurface locations and measured and true vertical depths for all markers and zones pertinent to this work.)\*

It is intended to plug and abandon the subject well according to the attached procedure and wellbore diagram.

RECEIVED  
JAN 23 1998  
OIL CON. DIV.  
DIST. 3

14. I hereby certify that the foregoing is true and correct

Signed

Title Production Superintendent

Date

12/12/97

(This space for Federal or State office use)

Approved by

Title

Chief, Lands and Mineral Resources

Date

JAN 21 1998

Conditions of approval, if any:

COA's for surface restoration is attached ltr.

Title 18 U.S.C. Section 1001, makes it a crime for any person knowingly and willfully to make to any department or agency of the United States any false, fictitious or fraudulent statements or representations as to any matter within its jurisdiction.

\* See Instruction on Reverse Side

## PLUG AND ABANDONMENT PROCEDURE

12-3-97

**Capulin Mesa #2**  
Gavilan Pictured Cliffs  
800' FSL & 1650' FWL / SW, Sec. 31, T25N, R1W  
Rio Arriba County, New Mexico

Note: All cement volumes use 100% excess outside pipe and 50' excess inside. The stabilizing wellbore fluid will be 8.3 ppg, sufficient to balance all exposed formation pressures.

1. Prepare blow pit. Comply with all NMOCD, BLM, and Taurus safety regulations. Conduct safety meeting for all personnel on location. NU relief line. Blow down well and kill with water as necessary. ND wellhead and install cementing valve.
2. Open bradenhead valve. Establish rate down 2-7/8" casing with 20 bbls water, record pump rate and pressure. Monitor bradenhead for flow. If no flow or blow, then pump 3 7/8" RCN balls in additional water and monitor pressure, rate and volumes pumped, to confirm perforations are taking water and there is not a casing leak. If the bradenhead flows water or there are other indications of a casing leak, then MO and RU pulling unit to use 1-1/4" IJ tubing workstring to plug the well.
3. **Plug #1 (Pictured Cliffs perforations and Fruitland, Kirtland, and Ojo Alamo tops, 3552' - 3160')**: Establish rate into perforations with water. Mix and pump 28 sxs Class B cement (20% excess) and bullhead cement down 2-7/8" casing, displace to 2700' with water. Shut in well and WOC. Rig up wireline truck and mast; tag cement. Pressure test casing to 500#.
4. **Plug #2 (Nacimiento top, 2625' - 2525')**: Perforate 3 squeeze holes at 2525'. Establish rate into squeeze holes if casing tested. Mix 56 sxs Class B cement and squeeze 50 sxs cement outside 2-7/8" casing and leave 6 sxs cement inside casing to cover Nacimiento top, displace to 2000'. Shut in well and WOC. Rig up wireline truck and mast; tag cement.  
  
If casing does not test after plug #1, then use a wireline set retainer at 2575' and tubing to set this plug. After spotting cement above CR then TOH and LD 1-1/4" tubing work string. Pressure test casing to 500#.
5. **Plug #3 (8-5/8" casing shoe at 226')**: Perforate 2 squeeze holes at 276'. Establish circulation out bradenhead valve. Mix and pump approximately 81 sxs Class B cement down 2-7/8" casing, circulate good cement to surface. Shut in well and WOC.
6. ND BOP and cut off wellhead below surface casing. Install P&A marker to comply with regulations. RD, MOL, cut off anchors, and restore location.

## Capulin Mesa #2

Current

Gavilan Pictured Cliffs

SW, Section 31, T-25-N, R-1-W, Rio Arriba County, NM

Today's Date: 12-3-97

Spud: 9-7-82

Completed: 11-10-82

Elevation: 7414' (GL)

7426' (KB)

Logs: CDL, IEL, T.S. & CBL

12-1/4" Hole

8-5/8" 24# J-55 Csg set @ 226'  
Cement w/ 150 sxs (Circulated to Surface)

### WELL HISTORY

June '85: Swab well: fluid level at 1060';  
recover 40 bbls water; acidize perms with  
750 gals HCl; swab out 18 bbls, FL at  
3000'; small gas; acidize again with 750  
gal; swab out 30 bbls, small gas.

TOC @ 1300' (T.S.)

TOC @ 2242' (Calc, 75%)

Nacimiento @ 2575'

TOC @ 2900' (CBL)

Ojo Alamo @ 3210'

Kirtland @ 3368'

Fruitland @ 3440'

7-7/8" Hole to 3400'

Pictured Cliffs @ 3484'

Pictured Cliffs Perforations:  
3489' - 3552' (8 holes)

6-3/4" Hole to TD

PBTD 3587'

2-7/8" 6.5#, J-55 Casing Set @ 3596'  
Cmt with 350 sxs (506 cf)

TD 3615'

## Capulin Mesa #2

### Proposed P&A

Gavilan Pictured Cliffs

SW, Section 31, T-25-N, R-1-W, Rio Arriba County, NM

Today's Date: 12-3-97  
Spud: 9-7-82  
Completed: 11-10-82  
Elevation: 7414' (GL)  
7426' (KB)  
Logs: CDL, IEL, T.S. & CBL

Nacimiento @ 2575'

Ojo Alamo @ 3210'

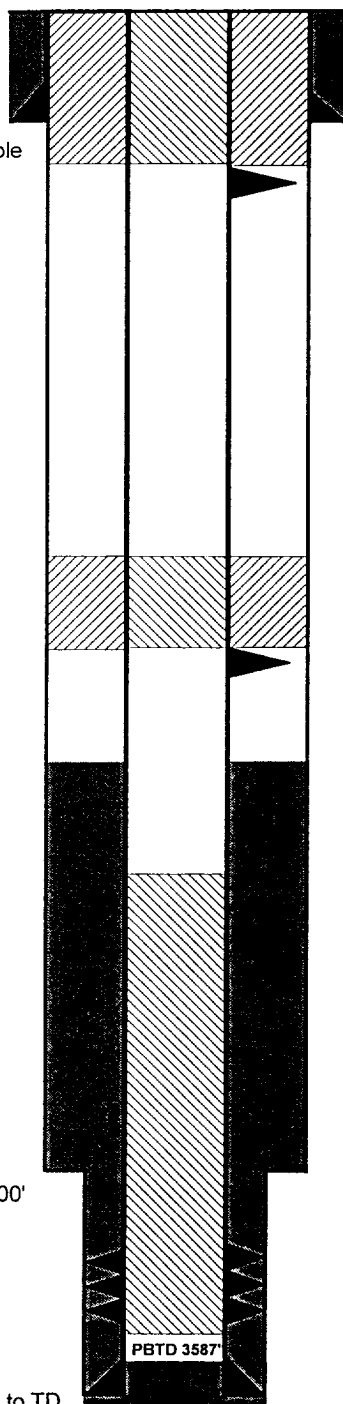
Kirtland @ 3368'

Fruitland @ 3440'

Pictured Cliffs @ 3484'

7-7/8" Hole to 3400'

6-3/4" Hole to TD



8-5/8" 24# J-55 Csg set @ 226'  
Cement w/ 150 sxs (Circulated to Surface)

Perforate @ 276'

Plug #3 276' - Surface  
Cmt with 81 sxs Class B

TOC @ 1300' (T.S.)

TOC @ 2242' (Calc, 75%)

Plug #2 2625' - 2525'  
Cmt with 56 sxs Class B,  
50 sxs outside casing  
and 6 inside casing.

Perforate @ 2625'

TOC @ 2900' (CBL)

Plug #1 3552' - 3160'  
Cmt with 28 sxs Class B,  
(20 % excess,  
displace to 2700')

Pictured Cliffs Perforations:  
3489' - 3552' (8 holes)

2-7/8" 6.5#, J-55 Casing Set @ 3596'  
Cmt with 350 sxs (506 cf)

TD 3615'

CONDITIONS OF APPROVAL FOR PERMANENT ABANDONMENT

Operator Taurus Expl., USA, Inc. Well Name Capulin Mesa #2

1. Plugging operations authorized are subject to the "General Requirements for Permanent Abandonment of Wells on Federal Leases."
2. For wells on Federal leases, Al Yepa with the Cuba Field Office is to be notified at least 24 hours (48 hours if possible) before the plugging operations commence. His phone number is (505) 289-3748. Office hours are 7:45 a.m. to 4:30 p.m.

For wells on Jicarilla leases notify Erwin Elote with the Jicarilla Apache Tribe at least 24 hours (48 hours if possible) before the plugging operations commence. His phone number is (505) 759-3242.

3. Blowout prevention equipment is required.
4. The following modifications to your plugging program are to be made : None