

UNITED STATES
DEPARTMENT OF THE INTERIOR
GEOLOGICAL SURVEY

30-039-23183

APPLICATION FOR PERMIT TO DRILL, DEEPEN, OR PLUG BACK

1a. TYPE OF WORK

DRILL ☒DEEPEN ☐PLUG BACK ☐

b. TYPE OF WELL

OIL
WELL ☐GAS
WELL ☒

OTHER

2. NAME OF OPERATOR

Merriam Oil & Gas Corporation

3. ADDRESS OF OPERATOR

P. O. Box 1017, Farmington, New Mexico 87401

4. LOCATION OF WELL (Report location clearly and in accordance with any State law.)

At surface 790 FNL and 790 FEL

At proposed prod. zone Same

14. DISTANCE IN MILES AND DIRECTION FROM NEAREST TOWN OR POST OFFICE*

10 miles NE Councilors

15. DISTANCE FROM PROPOSED*

LOCATION TO NEAREST
PROPERTY OR LEASE LINE, FT.
(Also to nearest drlg. unit line, if any)

790'

18. DISTANCE FROM PROPOSED LOCATION*
TO NEAREST WELL, DRILLING, COMPLETED,
OR APPLIED FOR, ON THIS LEASE, FT.

6050'

21. ELEVATIONS (Show whether DF, RT, GR, etc.)

6409' G.L.

23.

PROPOSED CASING AND CEMENTING PROGRAM

SIZE OF HOLE	SIZE OF CASING	WEIGHT PER FOOT	SETTING DEPTH	QUANTITY OF CEMENT
12-1/4"	8-5/8"	24 lb	200'	170 sx.
7-7/8"	4-1/2"	11.6 #/ft.	6740'	800 sx

Will drill 12-1/4" hole to 200 ft and set 200 ft. of 8-5/8", 24 lb. casing with 170 sx cement. Will drill 7-7/8" hole to 6740 ft. and run open hole logs. If appears productive will run 6740 ft. of 4-1/2", 11.6 #/ft casing and cement with 800 sx. Will set stage collar at approximately 2172 ft. and bring cement up across Ojo Alamo Formation. Will set stage collar at approximately 4507 ft. and bring cement up across Mesa Verde Formation. Will perforate and stimulate as required. Minimum specifications for pressure control equipment which is to be used - 10" 900 series double ram blowout preventer. Gas from this formation is dedicated.

Estimated Tops

Ojo Alamo	1582	Lewis	2152	Gallup	5362
Kirtland	1652	Cliffhouse	3597	Dakota	6387
Fruitland	1867	Menefee	3662		
Pictured Cliffs	2032	Point Lookout	4272		
		Mancos	4482		

IN ABOVE SPACE DESCRIBE PROPOSED PROGRAM: If proposal is to deepen or plug back, give data on present productive zone and proposed new productive zone. If proposal is to drill or deepen directionally, give pertinent data on subsurface locations and measured and true vertical depths. Give blowout preventer program, if any.

24.

SIGNED

TITLE Operations Manager

DATE 8/10/82

(This space for Federal or State office use)

PERMIT NO.

APPROVAL DATE

APPROVED BY

TITLE

DATE

CONDITIONS OF APPROVAL, IF ANY:

APPROVED
AS AMENDED

MAR 07 1983

JAMES F. SIMS
DISTRICT ENGINEER

NMOCG

OIL CONSERVATION DIVISION

STATE OF NEW MEXICO
ENERGY AND MINERALS DEPARTMENTP. O. BOX 2088
SANTA FE, NEW MEXICO 87501Form C-102
Revised 10-1-78

All distances must be from the outer boundaries of the Section.

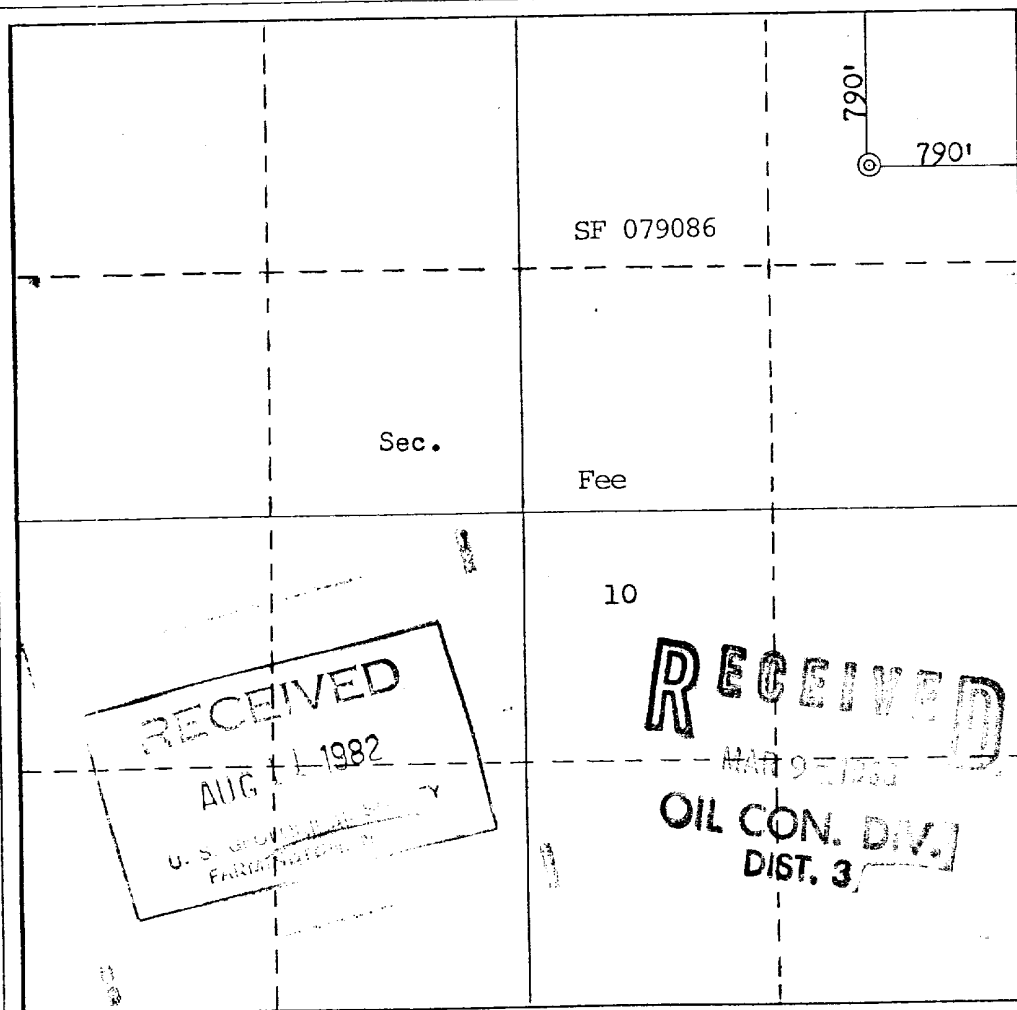
Operator MERRION OIL & GAS CORPORATION		Lease CANADA MESA COM		Well No. 4
Unit Letter A	Section 10	Township 24N	Range 6W	County Rio Arriba
Actual Footage Location of Well: 790 feet from the North line and 790 feet from the East line				
Ground Level Elev. 6409	Producing Formation Dakota	Pool Basin Dakota	Dedicated Acreage: 320 Acres	

1. Outline the acreage dedicated to the subject well by colored pencil or hatchure marks on the plat below.
2. If more than one lease is dedicated to the well, outline each and identify the ownership thereof (both as to working interest and royalty).
3. If more than one lease of different ownership is dedicated to the well, have the interests of all owners been consolidated by communitization, unitization, force-pooling, etc?

☒ Yes ☐ No If answer is "yes," type of consolidation Communitization

If answer is "no," list the owners and tract descriptions which have actually been consolidated. (Use reverse side of this form if necessary.)

No allowable will be assigned to the well until all interests have been consolidated (by communitization, unitization, forced-pooling, or otherwise) or until a non-standard unit, eliminating such interests, has been approved by the Commission.



CERTIFICATION

I hereby certify that the information contained herein is true and complete to the best of my knowledge and belief.

[Signature]

Name

Steve S. Dunn

Position

Operations Manager

Company

Merrion Oil & Gas Corporation

Date

8/6/82

I hereby certify that the well location shown on this plat was plotted from field notes of actual surveys made by me or under my supervision, and that the same is true and correct to the best of my knowledge and belief.

Date Surveyed

August 11, 1982

Registered Professional Engineer
and/or Land Surveyor*[Signature]*
Fred B. Kerr Jr.

Certificate No.

3950

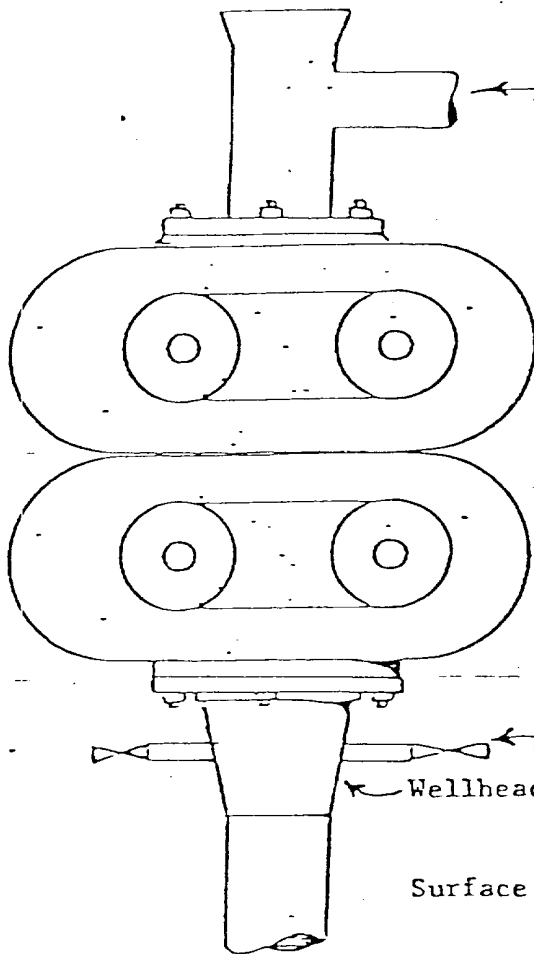
SURFACE WELL CONTROL EQUIPMENT-

MERRION OIL & GAS CORPORATION

Canada Mesa Com No. 4

Sec. 10, T24N, R6W

Rio Arriba County, New Mexico



Flow Line

10" - 900 Series Hydraulic Double Ram BOP which will be tested to 500 PSIG after setting o surface casing

2" Kill Line with 2000 WOG Ball Valve

Wellhead

Surface Casing

MERRION OIL & GAS CORPORATION

APPROVED BY:

SCALE:

DATE:

DRAWN BY:

REVISED

SCHEMATIC

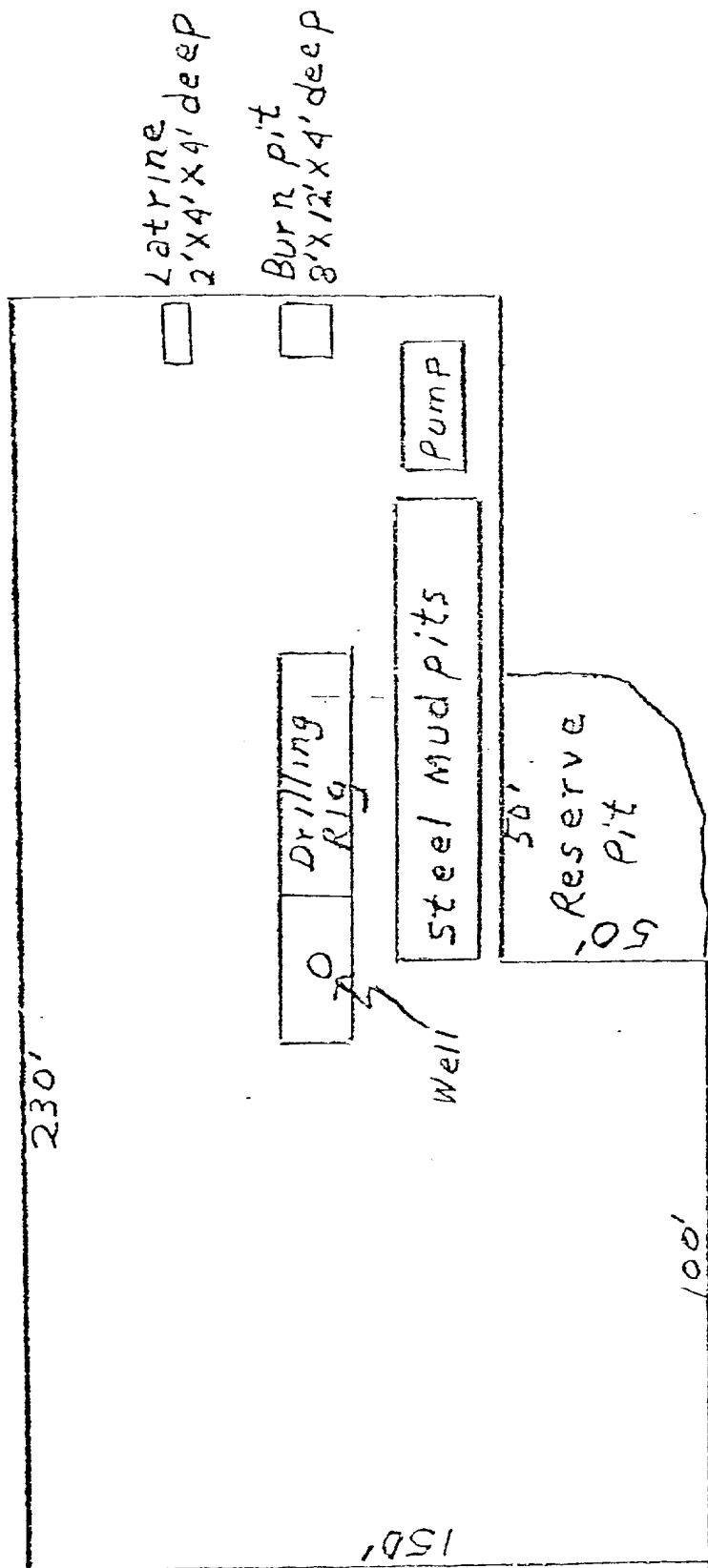
DRAWING NUMBER

MERRION OIL & GAS CORPORATION

Canada Mesa Com No. 4

Sec. 10, T24N, R6W

Rio Arriba County, New Mexico



SURFACE USE AND OPERATIONS PLAN

MERRION OIL & GAS CORPORATION
Canada Mesa Com No. 4
Sec. 10, T24N, R6W
Rio Arriba County, New Mexico

- 1 & 2. A topographical map is attached showing location of drillsite and access roads to location; approximately 700 ft. of new road is anticipated and is color coded accordingly on the map. A drive in truck mounted drilling rig will be used and will be driven in to the location with our road work. Our planned access road will be twelve feet in width, and will follow the existing terrain. No turnouts, culverts or cuts and fills are anticipated on the proposed access. In addition, natural drainage and surfacing material will be used.
3. Wells within one mile radius are shown on the topo map.
4. A. Existing facilities located within a one mile radius of the proposed location owned or controlled by the Operator and shown on the attached map:
Wellheads, Pumping Units, Tank Batteries
- B. Anticipated new facilities shown on the attached map:
Wellhead, Pumping Unit, Tank Battery
- C. Rehabilitation plans for the disturbed areas no longer needed for operations and maintenance:
Will follow BLM specifications
5. A. Location & type of water supply: NE/SE Sec. 28, T25N, R6W, NE/SE Sec. 3, T24N, R6W
NE/NE Sec. 4, T24N, R6W
- B. Water located on /XX/ Federal, / State, / Indian, or / private surface.
- C. Method of transporting water: Commercial Water Truck
- D. Water will be hauled on proposed access route noted in item 1 & 2.
6. Source of construction materials: None will be required
7. Methods of Disposal of water materials: Cuttings resulting from drilling, garbage, and sewage will be buried in drilling pit; salts and chemicals are not anticipated; eventual disposal of drilling fluids and any produced oil or water recovered during testing operations will be in drilling pit and buried.
8. No ancillary facilities are anticipated.
9. Wellsite layout is attached.
10. Plans for restoration of the surface:

Will be seeded according to agreement with surface owner as soon as feasible upon completion of drilling operations.
11. Other Information:

A. Surface ownership at well location and access route: BLM
- B. General description: Canyon bottom topography with grass and sage.
- C. General surface use activities: grazing use and wildlife habitat;
- D. ~~Environmental statement will be furnished by archeologist upon completion of surface inspections.~~

12. Operator representative:

Steve S. Dunn
Operations Manager
Merrion Oil & Gas Corporation
P. O. Box 1017
Farmington, New Mexico 87401

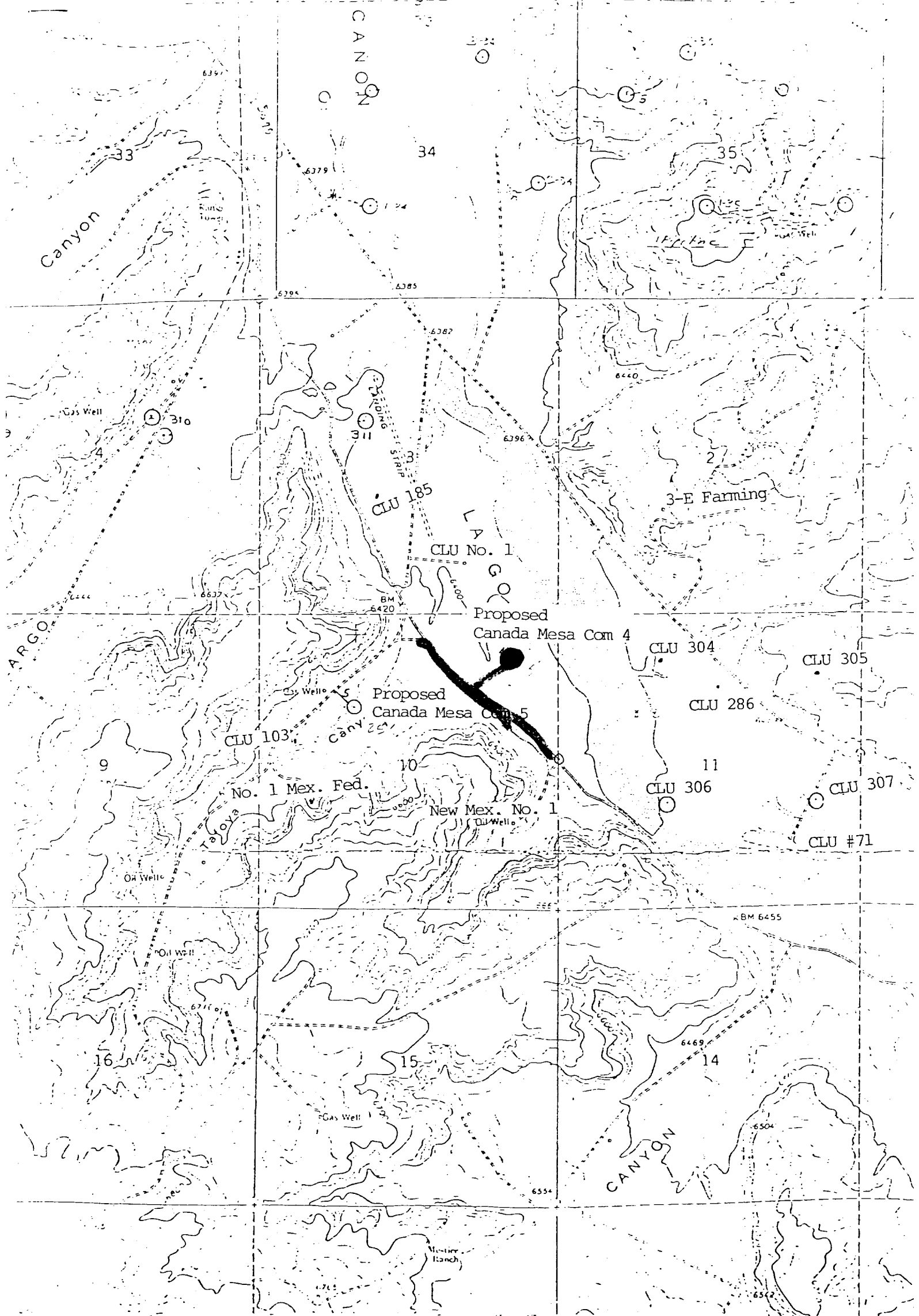
(505) 325-5093

13. Certification:

I hereby certify that I, or persons under my direct supervision, have inspected the proposed drillsite and access route; that I am familiar with the conditions which exist; that the statements made in this plan are, to the best of my knowledge, true and correct; and, that the work associated with the operations proposed herein will be performed by Merrion & Bayless and its contractors and subcontractors in conformity with this plan and the terms and conditions under which it is approved.

8/6/82
DATE





Vicinity Map for
MERRION OIL & GAS CORPORATION #4 CANADA MESA COM
790'FNL 790'FEL Sec. 10-T24N-R6W
RIO ARriba COUNTY, NEW MEXICO

Existing Road:
New Road:

UNITED STATES
DEPARTMENT OF THE INTERIOR
GEOLOGICAL SURVEY

SUNDRY NOTICES AND REPORTS ON WELLS

(Do not use this form for proposals to drill or to deepen or plug back to a different reservoir. Use Form 9-331-C for such proposals.)

1. oil ☒ gas ☐
well well other

2. NAME OF OPERATOR
Merrion Oil & Gas Corporation

3. ADDRESS OF OPERATOR
P. O. Box 1017, Farmington, New Mexico 87499

4. LOCATION OF WELL (REPORT LOCATION CLEARLY. See space 17 below.)
AT SURFACE: 790' FNL and 790' FEL
AT TOP PROD. INTERVAL: Same
AT TOTAL DEPTH: Same

16. CHECK APPROPRIATE BOX TO INDICATE NATURE OF NOTICE, REPORT, OR OTHER DATA

REQUEST FOR APPROVAL TO:

TEST WATER SHUT-OFF ☐
FRACTURE TREAT ☐
SHOOT OR ACIDIZE ☐
REPAIR WELL ☐
PULL OR ALTER CASING ☐
MULTIPLE COMPLETE ☐
CHANGE ZONES ☐
ABANDON* ☐
(other) Spud, Surface Casing

SUBSEQUENT REPORT OF:

☐ RECEIVED
JUN 1 1983
☐ U. S. GEOLOGICAL SURVEY
FARMINGTON, N. M.

5. LEASE
SF 079086
6. IF INDIAN, ALLOTTEE OR TRIBE NAME
7. UNIT AGREEMENT NAME
8. FARM OR LEASE NAME
Canada Mesa Com
9. WELL NO.
4
10. FIELD OR WILDCAT NAME
Basin Dakota
11. SEC., T., R., M., OR BLK. AND SURVEY OR AREA
Sec. 10, T24N, R6W
12. COUNTY OR PARISH
Rio Arriba
13. STATE
New Mexico
14. API NO.
15. ELEVATIONS (SHOW DF, KDB, AND WD)
6409' GL

17. DESCRIBE PROPOSED OR COMPLETED OPERATIONS (Clearly state all pertinent details, and give pertinent dates, including estimated date of starting any proposed work. If well is directionally drilled, give subsurface locations and measured and true vertical depths for all markers and zones pertinent to this work.)*

Spud 7:00 PM 5/30/83. Set 201' 8-5/8" surface casing @ 214' KB with 170 sx Class B (350.2 cu. ft.) 2% CaCl. Circulated 4 Bbls to surface. Pressure tested to 600 PSI. Held OK.

Subsurface Safety Valve: Manu. and Type

18. I hereby certify that the foregoing is true and correct

SIGNED [Signature] TITLE Operations Manager DATE 5/31/83

(This space for Federal or State office use)

APPROVED BY _____ TITLE _____ DATE _____
CONDITIONS OF APPROVAL, IF ANY:

*See Instructions on Reverse Side

NMOCC

FARMINGTON DISTRICT

BY

SMM

ACCEPTED FOR RECORD

JUN 15 1983