

**NEW MEXICO OIL CONSERVATION COMMISSION
WELL LOCATION AND ACREAGE DEDICATION PLAT**

Form C-102
Supersedes C-128
Effective 1-1-65

All distances must be from the outer boundaries of the Section

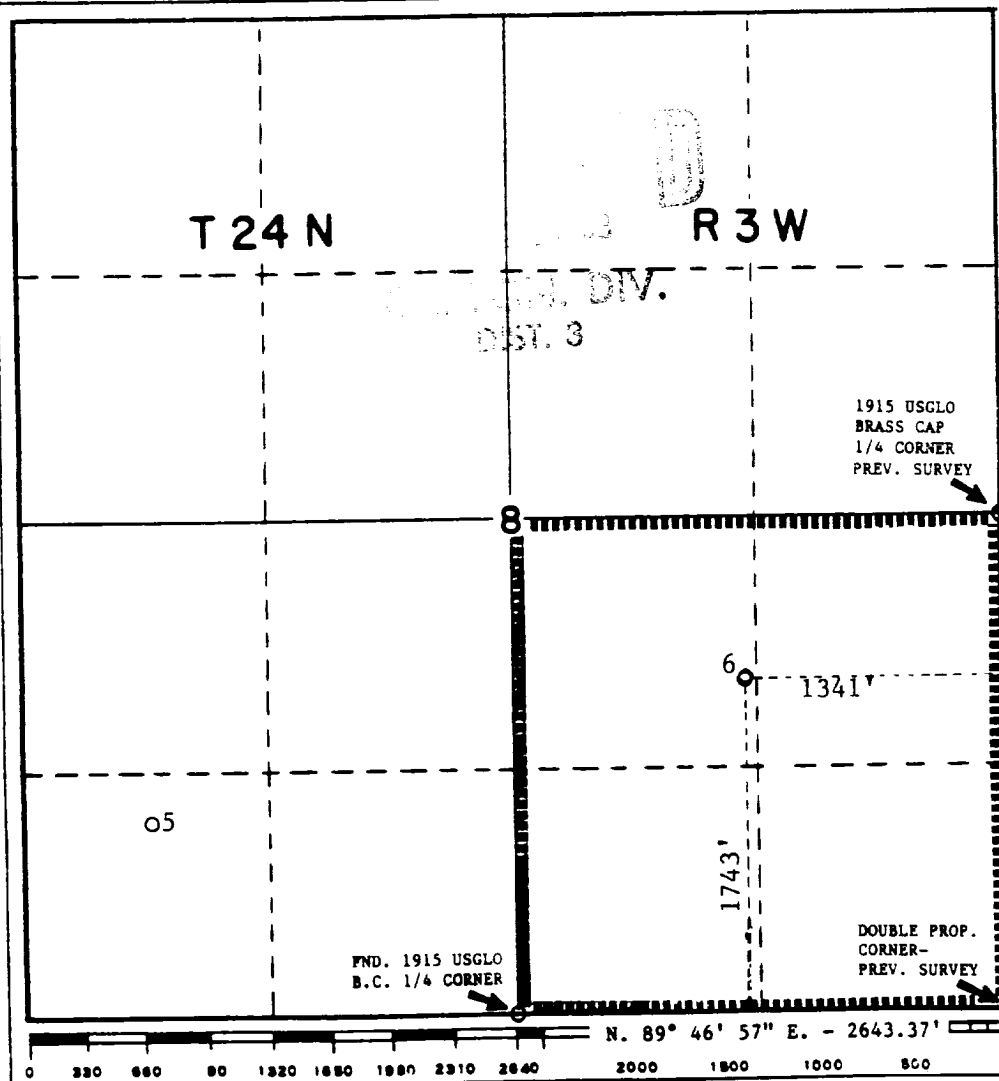
Operator Mobil Producing TX. & N.M. Inc.			Lease W.O. Hughes		Well No. 6
Unit Letter J	Section 8	Township 24N	Range 3W	County Rio Arriba	
Actual Footage Location of Well: <div style="display: flex; justify-content: space-between;"> 1743 feet from the South line and 1341 feet from the East line </div>					
Ground Level Elev. 6871'	Producing Formation Gallup - Dakota	Pool West Lindrith Gallup - Dakota	Dedicated Acreage: 160 Acres		

1. Outline the acreage dedicated to the subject well by colored pencil or hachure marks on the plat below.
2. If more than one lease is dedicated to the well, outline each and identify the ownership thereof (both as to working interest and royalty).
3. If more than one lease of different ownership is dedicated to the well, have the interests of all owners been consolidated by communitization, unitization, force-pooling, etc?

☐ Yes ☐ No If answer is "yes," type of consolidation _____

If answer is "no," list the owners and tract descriptions which have actually been consolidated. (Use reverse side of this form if necessary.) _____

No allowable will be assigned to the well until all interests have been consolidated (by communitization, unitization, forced-pooling, or otherwise) or until a non-standard unit, eliminating such interests, has been approved by the Commission.



CERTIFICATION

I hereby certify that the information contained herein is true and complete to the best of my knowledge and belief.

Name **A.D. Bond**
Position **Regulatory Engineering Coordinator II**
Company **Mobil Producing TX. & N.M. Inc.**

Date _____

I hereby certify that the well location shown on this plat was plotted from field notes of actual surveys made by me or under my supervision and that the same is true and correct to the best of my knowledge and belief.

Date Surveyed _____

April 12, 1983
Registered Professional Engineer
and/or Land Surveyor

H.A. Carson, Jr.

Certificate No.
5063