

NO. OF COPIES RECEIVED	
DISTRIBUTION	
SANTA FE	
FILE	
U.S.G.S.	
LAND OFFICE	
OPERATOR	

NEW MEXICO OIL CONSERVATION COMMISSION

30-039-23247

Form C-101
Revised 1-1-65

RECEIVED

5A. Indicate Type of Lease
STATE ☐ FEE ☒

5. State Oil & Gas Lease No.

APPLICATION FOR PERMIT TO DRILL, DEEPEN, OR PLUG BACK

1a. Type of Work DRILL <input checked="" type="checkbox"/> DEEPEN <input type="checkbox"/> PLUG BACK <input type="checkbox"/>		7. Unit Agreement Name Lindrith B Unit 8057	
b. Type of Well OIL WELL <input checked="" type="checkbox"/> GAS WELL <input type="checkbox"/> OTHER <input type="checkbox"/>		8. Farm or Lease Name	
c. Name of Operator Mobil Producing TX. & N.M. Inc. 15144		9. Well No. 25	
3. Address of Operator Nine Greenway Plaza, Suite 2700, Houston, TX 77046		10. Field and Pool, or Wildcat Chacon-Dakota Associated	
4. Location of Well UNIT LETTER 0 LOCATED 1250 FEET FROM THE South LINE AND 1840 FEET FROM THE East LINE OF SEC. 9 TWP. 24N RGE. 3W NMPM		12. County Rio Arriba	
19. Proposed Depth 7750'		19A. Formation Dakota	
20. Rotary or C.T. Rotary		21. Approx. Date Work will start	
21A. Kind & Status Plug. Bond On File		21B. Drilling Contractor Unknown	
22. Elevations (Show whether DF, RT, etc.) 6879' GR		23. Proposed Casing and Cement Program	

PROPOSED CASING AND CEMENT PROGRAM

SIZE OF HOLE	SIZE OF CASING	WEIGHT PER FOOT	SETTING DEPTH	SACKS OF CEMENT	EST. TOP
17 1/2"	13-3/8"	48# H-40	0 - 400'	Circulate	Surface
11"	8-5/8"	24# K-55	0 - 2300'	Circulate	Surface
		32# K-55	2300 - 3300'		
7-7/8"	4-1/2"	10.5# K-55	0 - 1600'		
		9.5# K-55	1600 - 5500'	Circulate	±2600'
		10.5# K-55	5500 - 7000'		
		11.6# K-55	7000 - 7750'		

BLOWOUT PREVENTER PROGRAM:

Casing String	Equipment Size & API Series	No. & Type	Test Pressure (psi)
Surface	13-5/8" x 2000#	1 Master Gate & 1 Pipe Ram	2000
Intermediate	9" x 3000#	1 Master Gate & 1 Pipe Ram	3000

Unorthodox location approved by Administrative Order NSL-1714, dated June 20, 1983.

IN ABOVE SPACE DESCRIBE PROPOSED PROGRAM: IF PROPOSAL IS TO DEEPEN OR PLUG BACK, GIVE DATA ON PRESENT PRODUCTIVE ZONE AND PROPOSED NEW PRODUCTIVE ZONE. GIVE BLOWOUT PREVENTER PROGRAM, IF ANY.

I hereby certify that the information above is true and complete to the best of my knowledge and belief.

Signed A. D. Bond A. D. Bond Title Regulatory Technician Supervisor Date July 8, 1983

(This space for State Use)

APPROVED BY [Signature] TITLE [Signature] DATE JUL 13 1983

CONDITIONS OF APPROVAL, IF ANY:

**NEW MEXICO OIL CONSERVATION COMMISSION
WELL LOCATION AND ACREAGE DEDICATION PLAT**

Form C-102
Supersedes C-128
Effective 1-1-65

All distances must be from the outer boundaries of the Section.

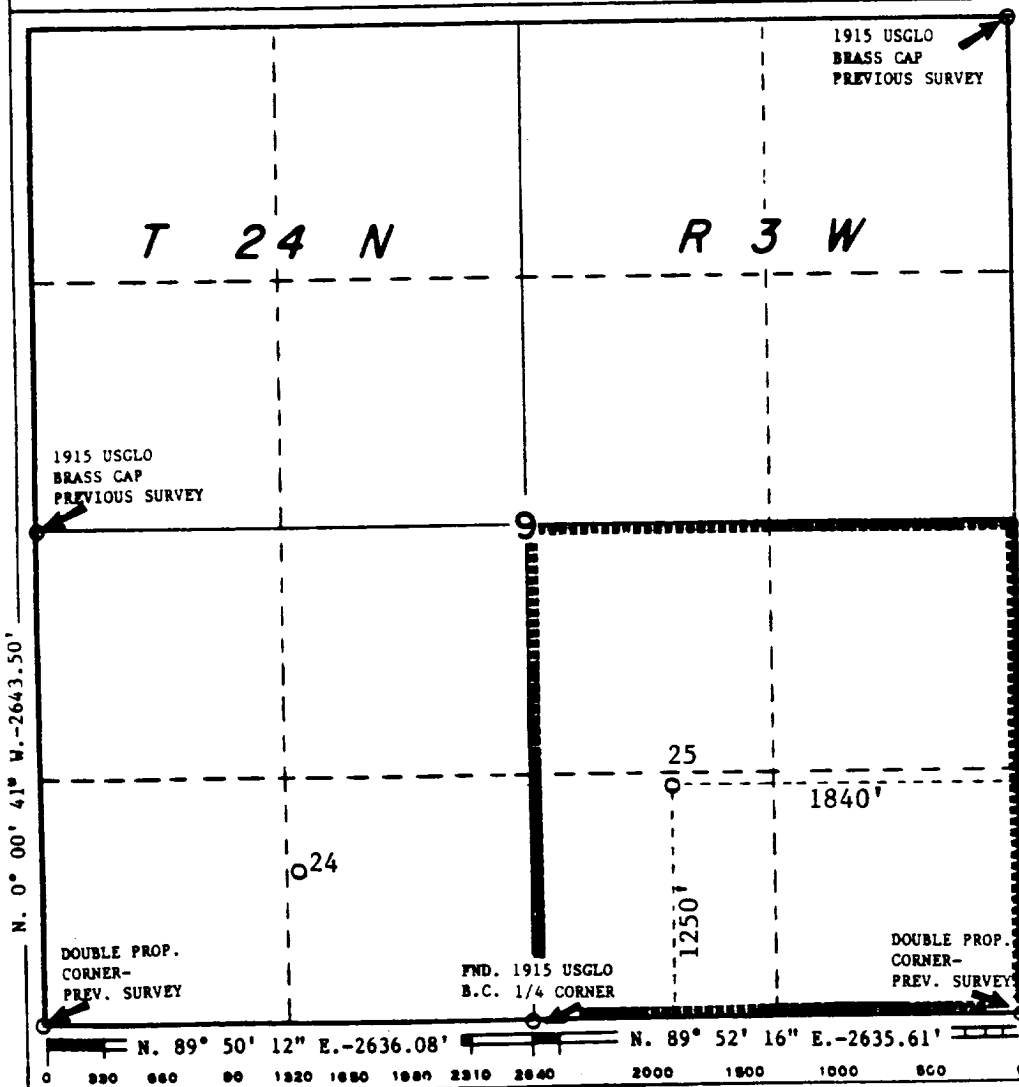
Operator Mobil Producing TX. & N.M. Inc.			Lease Lindrith B Unit		Well No. 25
Unit Letter 0	Section 9	Township 24N	Range 3W	County Rio Arriba	
Actual Footage Location of Well: 1250 feet from the South line and 1840 feet from the East line					
Ground Level Elev. 6879'	Producing Formation Dakota		Pool Chacon-Dakota Associated Est.	Dedicated Acreage: 160 Acres	

1. Outline the acreage dedicated to the subject well by colored pencil or hatchure marks on the plat below.
2. If more than one lease is dedicated to the well, outline each and identify the ownership thereof (both as to working interest and royalty).
3. If more than one lease of different ownership is dedicated to the well, have the interests of all owners been consolidated by communitization, unitization, force-pooling, etc?

☒ Yes ☐ No If answer is "yes," type of consolidation Unitization

If answer is "no," list the owners and tract descriptions which have actually been consolidated. (Use reverse side of this form if necessary.) _____

No allowable will be assigned to the well until all interests have been consolidated (by communitization, unitization, forced-pooling, or otherwise) or until a non-standard unit, eliminating such interests, has been approved by the Commission.



CERTIFICATION

I hereby certify that the information contained herein is true and complete to the best of my knowledge and belief.

A. D. Bond
 Name **A. D. Bond**
 Position **Regulatory Technician Supervisor**
 Company **Mobil Producing TX. & N.M. Inc.**
 Date **July 8, 1983**

I hereby certify that the well location shown on this plat was plotted from field notes of actual surveys made by me or under my supervision, and that the same is true to the best of my knowledge and belief.

H. A. Carson, Jr.
 Date Surveyed **April 12, 1983**
 Registered Professional Engineer and/or Land Surveyor
H. A. Carson, Jr.
 Certificate No. **5063**



STATE OF NEW MEXICO
ENERGY AND MINERALS DEPARTMENT
OIL CONSERVATION DIVISION

June 20, 1983

TONEY ANAYA
GOVERNOR

POST OFFICE BOX 2088
STATE LAND OFFICE BUILDING
SANTA FE, NEW MEXICO 87501
(505) 827-5800

Mobil Producing Texas
and New Mexico Inc.
Nine Greenway Plaza
Suite 2700
Houston, Texas 77046

Attention: A. D. Bond

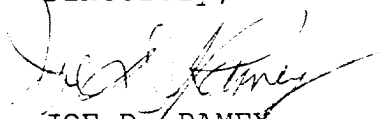
Administrative Order NSL-1714

Gentlemen:

Reference is made to your application for a non-standard location for your Lindrith B Unit Well No. 25 to be located 1250 feet from the South line and 1840 feet from the East line of Section 9, Township 24 North, Range 3 West, NMPM, Rio Arriba County, New Mexico.

By authority granted me under the provisions of Rule 2c of Order No. R-5353, the above-described unorthodox location is hereby approved.

Sincerely,


JOE D. RAMEY,
Director

JDR/RLS/dr

cc: Oil Conservation Division - Aztec
Oil & Gas Engineering Committee - Hobbs

RECEIVED
JUN 23 1983
OIL CON. DIV.
P. 3

