

UNITED STATES  
DEPARTMENT OF THE INTERIOR  
GEOLOGICAL SURVEY30039-23409  
5. LEASE IDENTIFICATION AND SERIAL NO.

NM 23039

## APPLICATION FOR PERMIT TO DRILL, DEEPEN, OR PLUG BACK

## 1a. TYPE OF WORK

DRILL ☒DEEPEN ☐PLUG BACK ☐

## b. TYPE OF WELL

OIL  
WELL ☒GAS  
WELL ☐OTHER ☐SINGLE  
ZONE ☐MULTIPLE  
ZONE ☐

## 2. NAME OF OPERATOR

Jerome P. McHugh

## 3. ADDRESS OF OPERATOR

Box 208, Farmington, New Mexico 87499

## 4. LOCATION OF WELL (Report location clearly and in accordance with any State requirements.)

At surface

280' FSL - 1590' FEL

At proposed prod. zone

BUREAU OF LAND MANAGEMENT

FARMINGTON RESOURCE AREA

## 14. DISTANCE IN MILES AND DIRECTION FROM NEAREST TOWN OR POST OFFICE

4½ miles NNE of Lindrith, New Mexico

## 15. DISTANCE FROM PROPOSED\*

LOCATION TO NEAREST  
PROPERTY OR LEASE LINE, FT.  
(Also to nearest drlg. unit line, if any)

990'

## 16. NO. OF ACRES IN LEASE

600

17. NO. OF ACRES ASSIGNED  
TO THIS WELL

40/320

18. DISTANCE FROM PROPOSED LOCATION\*  
TO NEAREST WELL, DRILLING, COMPLETED,  
OR APPLIED FOR, ON THIS LEASE, FT.

½ mile to east

## 19. PROPOSED DEPTH

8160'

## 20. ROTARY OR CABLE TOOLS

rotary

## 21. ELEVATIONS (Show whether DF, RT, GR, etc.)

7107' GL; 7119' RKB

## DRILLING OPERATIONS AUTHORIZED ARE

SUBJECT TO COMPLIANCE WITH ATTACHED

## 23. "GENERAL REQUIREMENTS" CEMENTING PROGRAM

This action is subject to administrative  
appeal pursuant to 30 CFR 290.

SIZE OF HOLE	SIZE OF CASING	WEIGHT PER FOOT	SETTING DEPTH	QUANTITY OF CEMENT
12½"	9-5/8"	47#	210'	135 sx class "B" +2% CaCl to sur
7-7/8"	4½"	11.6#/10.5	8160'	2306 cf cem. in 3 stgs and cir. to surface.

Plan to drill with spud mud to set surface casing at approximately 200'. Will then drill with water-mud-gel mixture to test the Basin Dakota formation. Plan to run IES and CDL logs; if the well appears productive, will run 4½" casing, cementing in three stages; will selectively perforate, frac, clean out after frac, and complete well using 2-3/8" tubing.

NMERB Requirement: GAS DEDICATED

RECEIVED

MAR 30 1984

OIL CON. DIV.  
DIST. 3

IN ABOVE SPACE DESCRIBE PROPOSED PROGRAM: If proposal is to deepen or plug back, give data on present productive zone and proposed new productive zone. If proposal is to drill or deepen directionally, give pertinent data on subsurface locations and measured and true vertical depths. Give blowout preventer program, if any.

24.

SIGNED

Jerry McHugh

TITLE Company Representative

DATE 1-20-84

(This space for Federal or State office use)

PERMIT NO.

APPROVAL DATE

APPROVED BY

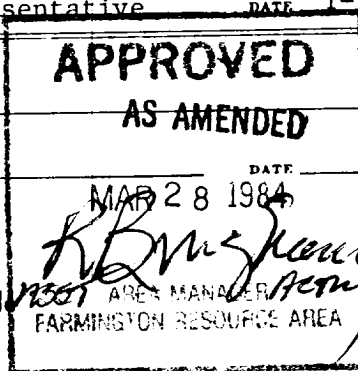
TITLE

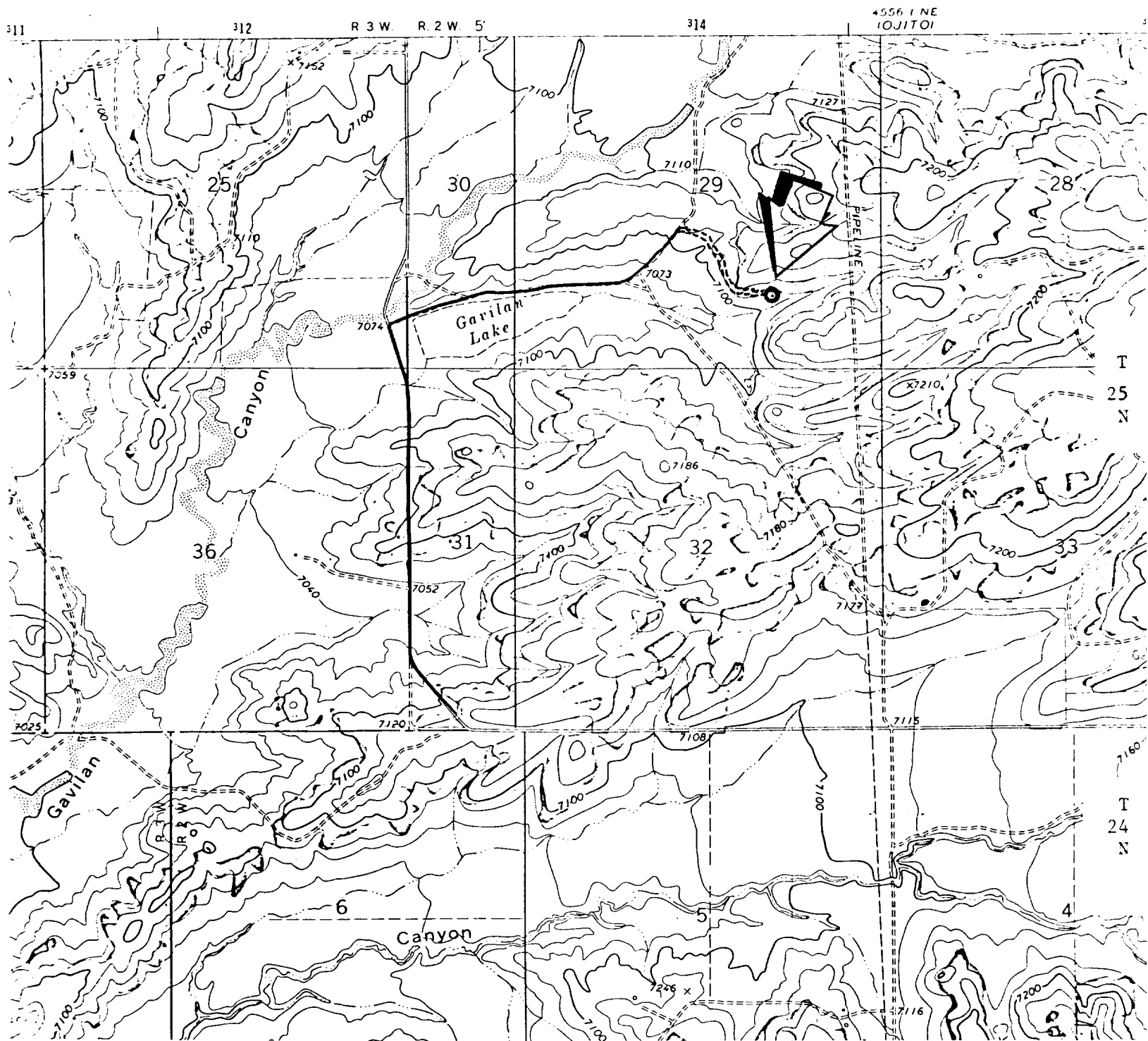
DATE

CONDITIONS OF APPROVAL, IF ANY:

ok

\*See Instructions On Reverse Side





Existing Roads ————— Exhibit E

Distance from nearest town or reference pt.  
4½ miles NNE of Lindrith, N.M.

Type of surface Dirt, loamy clay soil

Conditions good

Other none

Planned Access Road(s) ===== Exhibit E

Already existing  
Width 20' Maximum grades 1%  
Drainage design small ditch on each side of road  
Cuts & Fills none  
Surfacing material local dirt  
Turnouts none  
Culverts none  
Gates none  
Cattleguards none  
Fence cuts none

Access road(s) do do not cross Fed Ind land.

**NEW MEXICO OIL CONSERVATION COMMISSION  
WELL LOCATION AND ACREAGE DEDICATION PLAT**

Form C-102  
Supersedes C-128  
Effective 1-1-65

All distances must be from the outer boundaries of the Section.

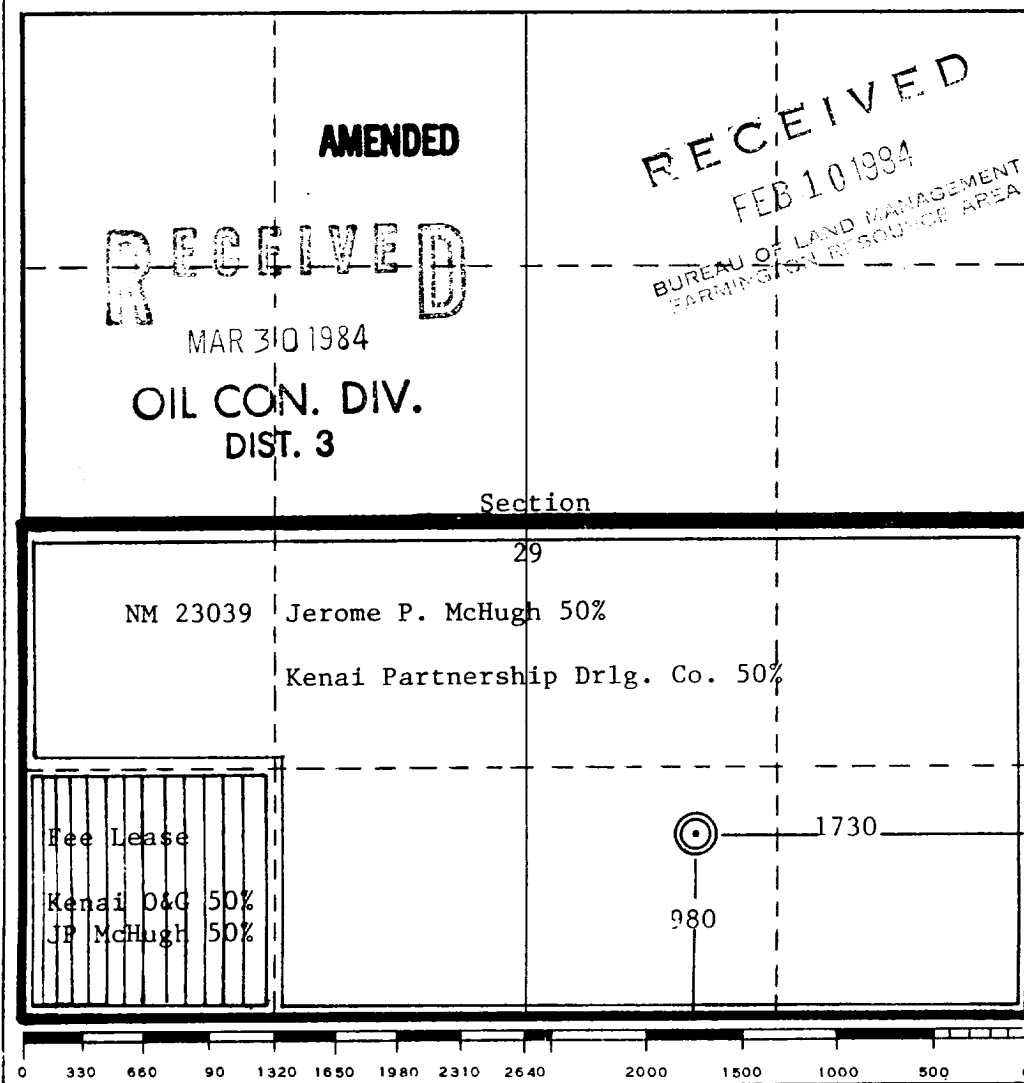
Operator <b>Jerome P. McHugh</b>			Lease <b>Full Sail</b>		Well No. <b>1</b>
Unit Letter <b>0</b>	Section <b>29</b>	Township <b>25 North</b>	Range <b>2 West</b>	County <b>Rio Arriba</b>	
Actual Footage Location of Well: <b>980</b> feet from the <b>South</b> line and <b>1730</b> feet from the <b>East</b> line					
Ground Level Elev. <b>7107'</b>	Producing Formation <b>Mancos/Dakota</b>	Pool <b>Basin Dakota/Gavilan Mancos</b>		Dedicated Acreage: <b>40/S 320</b> Acres	

1. Outline the acreage dedicated to the subject well by colored pencil or hachure marks on the plat below.
2. If more than one lease is dedicated to the well, outline each and identify the ownership thereof (both as to working interest and royalty).
3. If more than one lease of different ownership is dedicated to the well, have the interests of all owners been consolidated by communitization, unitization, force-pooling, etc?

☒ Yes    ☐ No    If answer is "yes," type of consolidation communitization

If answer is "no," list the owners and tract descriptions which have actually been consolidated. (Use reverse side of this form if necessary.) \_\_\_\_\_

No allowable will be assigned to the well until all interests have been consolidated (by communitization, unitization, forced-pooling, or otherwise) or until a non-standard unit, eliminating such interests, has been approved by the Commission.



**CERTIFICATION**

I hereby certify that the information contained herein is true and complete to the best of my knowledge and belief.

Name Jerry McHugh  
Position **Co. Representative**

Company **Jerome P. McHugh**

Date **2-7-84**

I hereby certify that the well location shown on this plat was plotted from field notes of actual surveys made by me or under my supervision, and that the same is true and correct to the best of my knowledge and belief.

Date Surveyed **2-7-84**

Registered Professional Engineer and/or Land Surveyor

Certificate No. 2373