

UNITED STATES
DEPARTMENT OF THE INTERIOR
BUREAU OF LAND MANAGEMENT

RECEIVED

DEC - 3 1993

OIL CON. DIV.

DIST. 3

SUNDRY NOTICES AND REPORTS ON WELLS
Do not use this form for proposals to drill or to deepen
or reentry to a different reservoir.
Use "APPLICATION FOR PERMIT" For such proposals

5. Lease Designation No.

NM-40640

6. If Indian, Allottee or Tribe Name

7. If Unit or CA, Agreement Designation

8. Well Name and No.

Amoco Federal Oso
Canyon #1

9. API Well No.

30-039-23441

10. Field and Pool, or Exploratory Area

Undesignated GAL ~~FEAK~~

11. County or Parish, State

Rio Arriba, NM

SUBMIT IN TRIPLICATE

1. Type of Well:

X Oil Well Gas Well Other

2. Name of Operator

MW Petroleum c/o Apache Corporation

3. Address and Telephone No.

304 N. Behrend Farmington, NM 87401 505-325-0318

4. Location of Well (Footage, Sec., T., R., M., or Survey Description)

1650' FNL & 990' FWL Sec. 24, T24N, R2W

12. CHECK APPROPRIATE BOX(S) TO INDICATE NATURE OF NOTICE, REPORT, OR OTHER DATA

TYPE OF SUBMISSION	TYPE OF ACTION
X Notice of Intent	Abandonment
Subsequent Report	Recompletion
Final Abandonment Notice	Plugging Back
	Casing Repair
	Altering Casing
	Other Plug and Abandon
	(Note: Report results of multiple completions on Well Completion or Recompletion Report and Log Form.)
	Change of Plans
	New Construction
	Non-Routine Fracturing
	Water Shut-Off
	Conversion to Injection
	Dispose Water

13. Describe Proposed or Completed Operations (Clearly state all pertinent details, and give pertinent dates, including estimated date of starting any proposed work. If well is directionally drilled give subsurface locations and measured and true vertical depths for all markers and zones pertinent to this work.)

As per Robert Kent 10-12-93
The 5 1/2" casing long string had cement (all cement is class "B" neat) circulated to the surface when the well was drilled June, 1984. MWP proposes to P&A this well in the following manner:
1. Move in service rig, lay down rods. Nipple up BOP, pull tubing.
2. Run cement retainer on tubing, set @ 6730'. Sting out, circulate tubing/casing w/packer fluid. Sting back in, cement perfs f/6786' to 7016' w/147.5 cu.ft. cement leaving 20.2 cu.ft. cement on top of the retainer.
3. Spot 106.2 cu.ft. cement across the Mesa Verde interval f/5065' to 5860'.
4. Spot 88.5 cu.ft. cement across Pictured Cliff, Fruitland, Ojo Alamo interval f/2828' to 3490'.
5. Perforate 5 1/2" casing @ 375', cement inside 5 1/2" and between 5 1/2" and 8 5/8" casing f/375' to the surface.
6. Cutoff the wellhead, install the P & A marker.
7. Remove surface equipment, remediate and reseed location.
See attachments A, B

14. I Certify that the foregoing is true and correct

Signed

Stan Phillips

Title

Production Foreman

Date:

10-26-93

(This space for Federal or State office use)

Approved by

(Original Signed) HECTOR A. VILLALOBOS

AREA MANAGER

Date

RIO PUERCO RESOURCE AREA

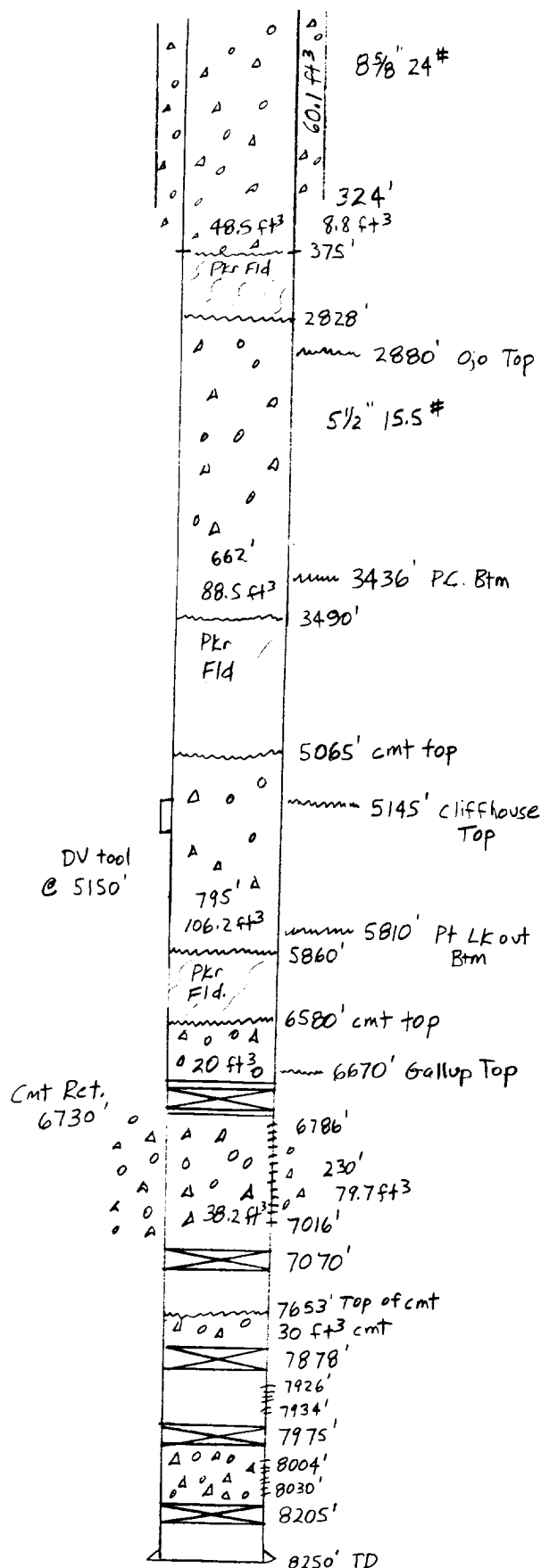
DEC 1 1993

Conditions of approval, if any:

All cmt - Class B 15.6 #gal, 1.18 ft³/sk

Fed Oso Canyon 1

Proposed P+A Schedule



#1. Set cmt retainer @ 6730'. Sting out, circ well w/ 146 bbls water containing corrosion inhibitor (packer fluid). Press test csg to 500 PSI.
125sx { 9. Sting back in, pump 125 sx (147.5 ft³) cmt, putting 89.1 ft³ behind csg, 38.2 ft³ inside csg. Sting out, spot 20.2 ft³ on top of cmt. retainer.

90sx 2. TOH to 5860', spot 90sx (106.2 ft³) f/ 5860' to 5065'.

75sx 3. TOH to 3490', spot 75sx (88.5 ft³) f/ 3490' to 2828'.

4. TOH w/ pipe.

5. Perf 5 1/2" csg @ 375'.
a. Break circ, pump down 5 1/2" csg, circ up surface csg.

100sx 6. Pump cmt down 5 1/2", circ cmt up 8 5/8" - approx 100sx (118 ft³), leaving surface plug f/ 375' to surface.

7. Cut off wellhead, install dry hole marker.

A. Perf - 2 shots @ 375'

B. Cmt - 382 sx class B neat.

C. 2 drums pkr fld. (mixed @ 1.3% by volumn) (200 bbls)

D. 1 cmt retainer.

RECEIVED
DEC - 3 1993
OIL COMPANY

9-3-92

Federal Oso Canyon 1

Spud 5-18-84

Present wellbore diagram 10-18-93

(Information from Sundry notices filed by Alaco)

6-84 Perf 8004-8030' 208 holes.

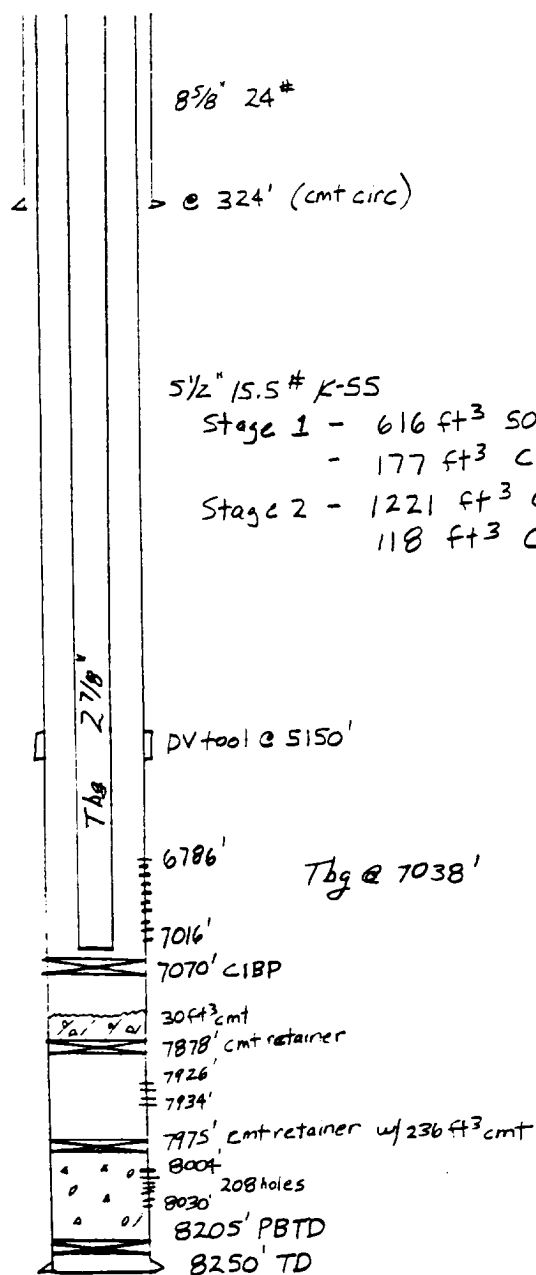
Set cmt retainer @ 7975', squeeze
236 ft³ cmt. Perf 7926'-7934' 32 holes.
Frac w/ 20,000 gal 175,000# sd.
Land tbg, move off.

7-84 Set cmt retainer @ 7878', spot
30 ft³ cmt on Main Dakota perfs.
Perf Gal - 6786-6800', 6838'-50',
6908-20', 7004-16' 4SPF 200 holes.
Frac 100, 254 gal, 73,800# sd.
Land tbg @ 7038'.

2-85 IP test date of test 12-84
15 BOPD . 2 BW 145 mCFD

10-85 Set CIBP @ 7070' on 7-17-84
to isolate Dak. (Handwritten note
says 30 ft³ cmt spotted on top of
cmt retainer @ 7878')

Sundry Notice dated July 30, 1984 -
states "the cmt was circulated to the
surface after the 5 1/2" csg was set"



1st stage 793 ft³
2nd stage 1221 ft³ (cmt circ)

ALL LOST 'D'

RECEIVED
JUL 11 1984
OIL & GAS