

OIL CONSERVATION DIVISION

STATE OF NEW MEXICO
ENERGY AND MINERALS DEPARTMENTP. O. BOX 2088
SANTA FE, NEW MEXICO 87501Form C-102
Revised 10-1-78

All distances must be from the outer boundaries of the Section.

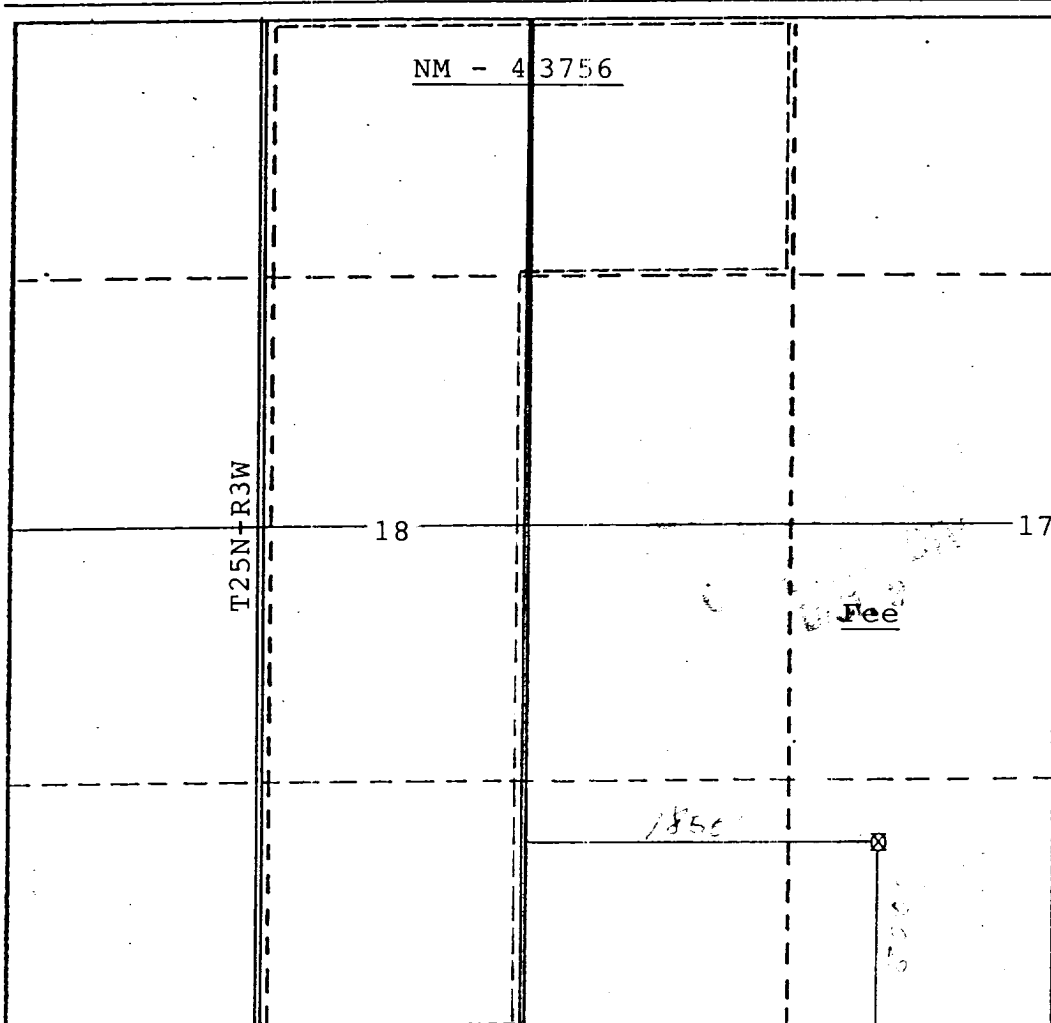
Operator MESA GRANDE RESOURCES, INC.			Lease BROWN (fee)		Well No. #1
Unit Letter N	Section 17	Township 25 North	Range 2 West	County Rio Arriba	
Actual Footage Location of Well: 1850 feet from the West line and 850 feet from the South line N.M.P.M.					
Ground Level Elev. 7184'	Producing Formation Mancos	Pool Gavilan Mancos		Dedicated Acreage: 506.36 Acres	

1. Outline the acreage dedicated to the subject well by colored pencil or hachure marks on the plat below.
2. If more than one lease is dedicated to the well, outline each and identify the ownership thereof (both as to working interest and royalty).
3. If more than one lease of different ownership is dedicated to the well, have the interests of all owners been consolidated by communitization, unitization, force-pooling, etc?

☒ Yes ☐ No If answer is "yes," type of consolidation Communitization

If answer is "no," list the owners and tract descriptions which have actually been consolidated. (Use reverse side of this form if necessary.)

No allowable will be assigned to the well until all interests have been consolidated (by communitization, unitization, forced-pooling, or otherwise) or until a non-standard unit, eliminating such interests, has been approved by the Division.



CERTIFICATION

I hereby certify that the information contained herein is true and complete to the best of my knowledge and belief.

Gregory R. Phillips
Name **Gregory R. Phillips**

Position
Vice President

Company
Mesa Grande Resources, Inc.

Date
December 17, 1986

I hereby certify that the well location shown on this plat was plotted from field notes of actual surveys made by me or under my supervision, and that the same is true and correct to the best of my knowledge and belief.

Date Surveyed

Registered Professional Engineer
and/or Land Surveyor

Certificate No.

