

UNITED STATES  
DEPARTMENT OF THE INTERIOR  
GEOLOGICAL SURVEY

## APPLICATION FOR PERMIT TO DRILL, DEEPEN, OR PLUG BACK

## 1a. TYPE OF WORK

DRILL ☒DEEPEN ☐PLUG BACK ☐

## b. TYPE OF WELL

OIL  
WELL ☐GAS  
WELL ☒

OTHER

SINGLE  
ZONE ☒MULTIPLE  
ZONE ☐

## 2. NAME OF OPERATOR

CONOCO INC.

## 3. ADDRESS OF OPERATOR

P. O. Box 460, Hobbs, N.M. 88240

## 4. LOCATION OF WELL (Report location clearly and in accordance with any State requirements.)\*

At surface

1675' FSL + 1575' FEL

At proposed prod. zone

## 14. DISTANCE IN MILES AND DIRECTION FROM NEAREST TOWN OR POST OFFICE\*

## 15. DISTANCE FROM PROPOSED\*

LOCATION TO NEAREST  
PROPERTY OR LEASE LINE, FT.  
(Also to nearest drlg. unit line, if any)

## 15. DISTANCE FROM PROPOSED LOCATION\*

TO NEAREST WELL, DRILLING, COMPLETED,  
OR APPLIED FOR, ON THIS LEASE, FT.

## 16. NO. OF ACRES IN LEASE

BUREAU OF LAND MANAGEMENT  
FARMINGTON RESOURCE AREA

## 17. NO. OF ACRES ASSIGNED

TO THIS WELL

## 19. PROPOSED DEPTH

5975'

## 20. ROTARY OR CABLE TOOLS

ROTARY

## 21. ELEVATIONS (Show whether DF, ET, GR, etc.) DRILLING OPERATIONS AUTHORIZED ARE

7088' GR

SUBJECT TO COMPLIANCE WITH ATTACHED

## 22. APPROX. DATE WORK WILL START\*

AUGUST 15, 1984

## 23. "GENERAL REQUIREMENTS" PROPOSED CASING AND CEMENTING PROGRAM

This action is subject to administrative  
appeal pursuant to 30 CFR 290.

SIZE OF HOLE	SIZE OF CASING	WEIGHT PER FOOT	SETTING DEPTH	QUANTITY OF CEMENT
12 1/4"	9 5/8"	36 #	300'	225 GXS, 265 FT'
7 7/8"	5 1/2"	15.5 #	5975'	1775 GXS, 2886 FT'

IT IS PROPOSED TO DRILL A STRAIGHT HOLE TO A TD OF 5975' AND COMPLETE AS A BLANCO MESAVERDE SINGLE GAS WELL. SEE ATTACHMENTS FOR AN 8-POINT WELL PLAN AND 13-POINT SURFACE USE PLAN.

IN ABOVE SPACE DESCRIBE PROPOSED PROGRAM: If proposal is to deepen or plug back, give data on present productive zone and proposed new productive zone. If proposal is to drill or deepen directionally, give pertinent data on subsurface locations and measured and true vertical depths. Give blowout preventer program, if any.

24. SIGNED Wm. A. Kuttner TITLE Administrative SupervisorAPPROVED  
DATE 5/22/84

(This space for Federal or State office use)

PERMIT NO. \_\_\_\_\_

APPROVAL DATE \_\_\_\_\_

APPROVED BY \_\_\_\_\_

CONDITIONS OF APPROVAL, IF ANY: \_\_\_\_\_

TITLE \_\_\_\_\_

MAY 30 1984

AREA MANAGER  
FARMINGTON RESOURCE AREA

NMOCC

\*See Instructions On Reverse Side

All distances must be from the outer boundaries of the Section.

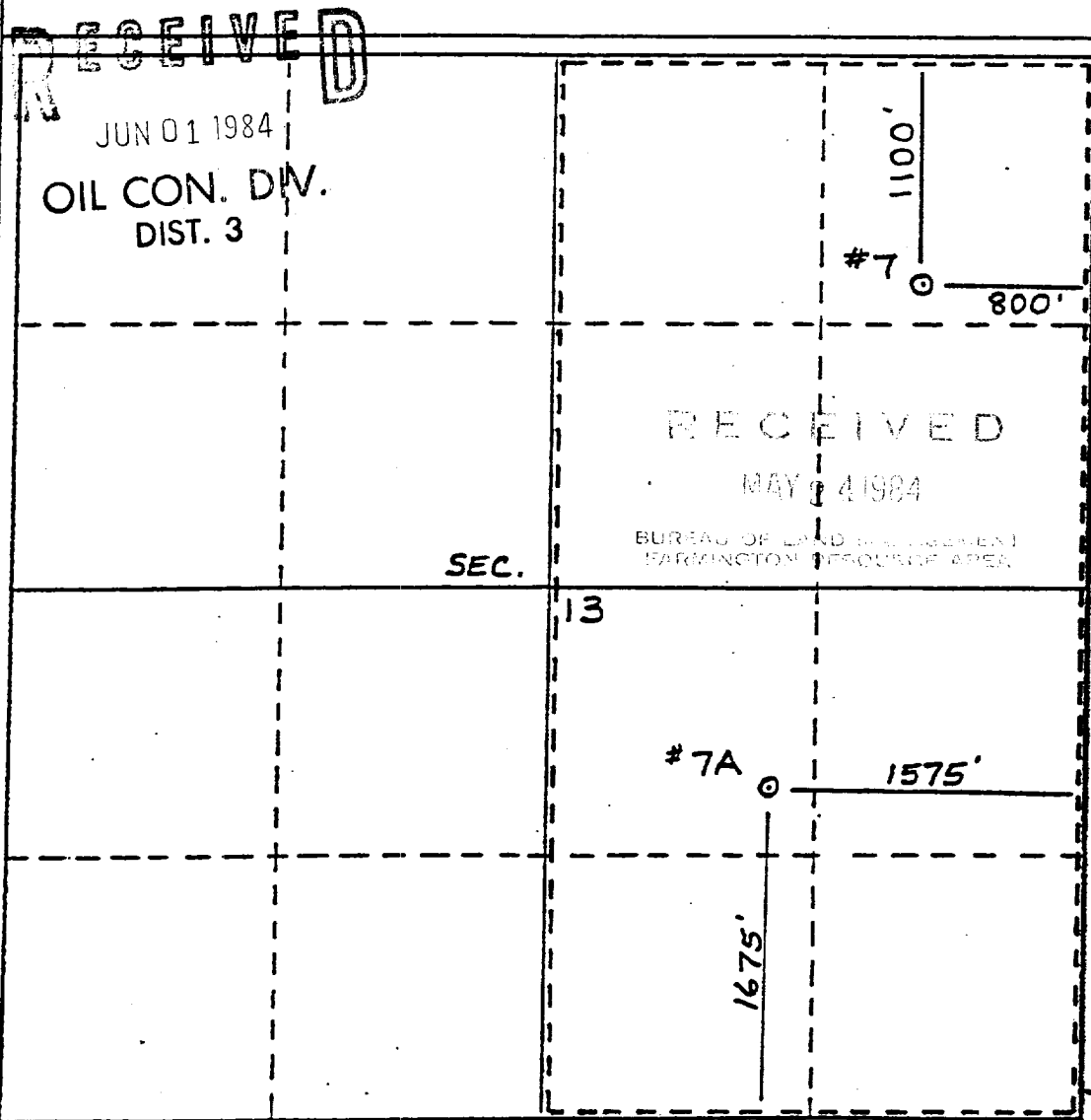
Operator <b>CONOCO INC.</b>		Lease <b>AXI APACHE "M"</b>		Well No. <b>7A</b>
Unit Letter <b>J</b>	Section <b>13</b>	Township <b>25 N</b>	Range <b>4 W</b>	County <b>RIO ARriba</b>
Actual Footage Location of Well: <b>1675</b> feet from the <b>SOUTH</b> line and <b>1575</b> feet from the <b>EAST</b> line				
Ground Level Elev. <b>7088'</b>	Producing Formation <b>MESAVERDE</b>	Pool <b>BLANCO MESAVERDE</b>	Dedicated Acreage: <b>320</b> Acres	

1. Outline the acreage dedicated to the subject well by colored pencil or hatchure marks on the plat below.
2. If more than one lease is dedicated to the well, outline each and identify the ownership thereof (both as to working interest and royalty).
3. If more than one lease of different ownership is dedicated to the well, have the interests of all owners been consolidated by communitization, unitization, force-pooling, etc?

☐ Yes ☐ No If answer is "yes," type of consolidation \_\_\_\_\_

If answer is "no," list the owners and tract descriptions which have actually been consolidated. (Use reverse side of this form if necessary.) \_\_\_\_\_

No allowable will be assigned to the well until all interests have been consolidated (by communitization, unitization, forced-pooling, or otherwise) or until a non-standard unit, eliminating such interests, has been approved by the Division



CERTIFICATION

I hereby certify that the information contained herein is true and complete to the best of my knowledge and belief.

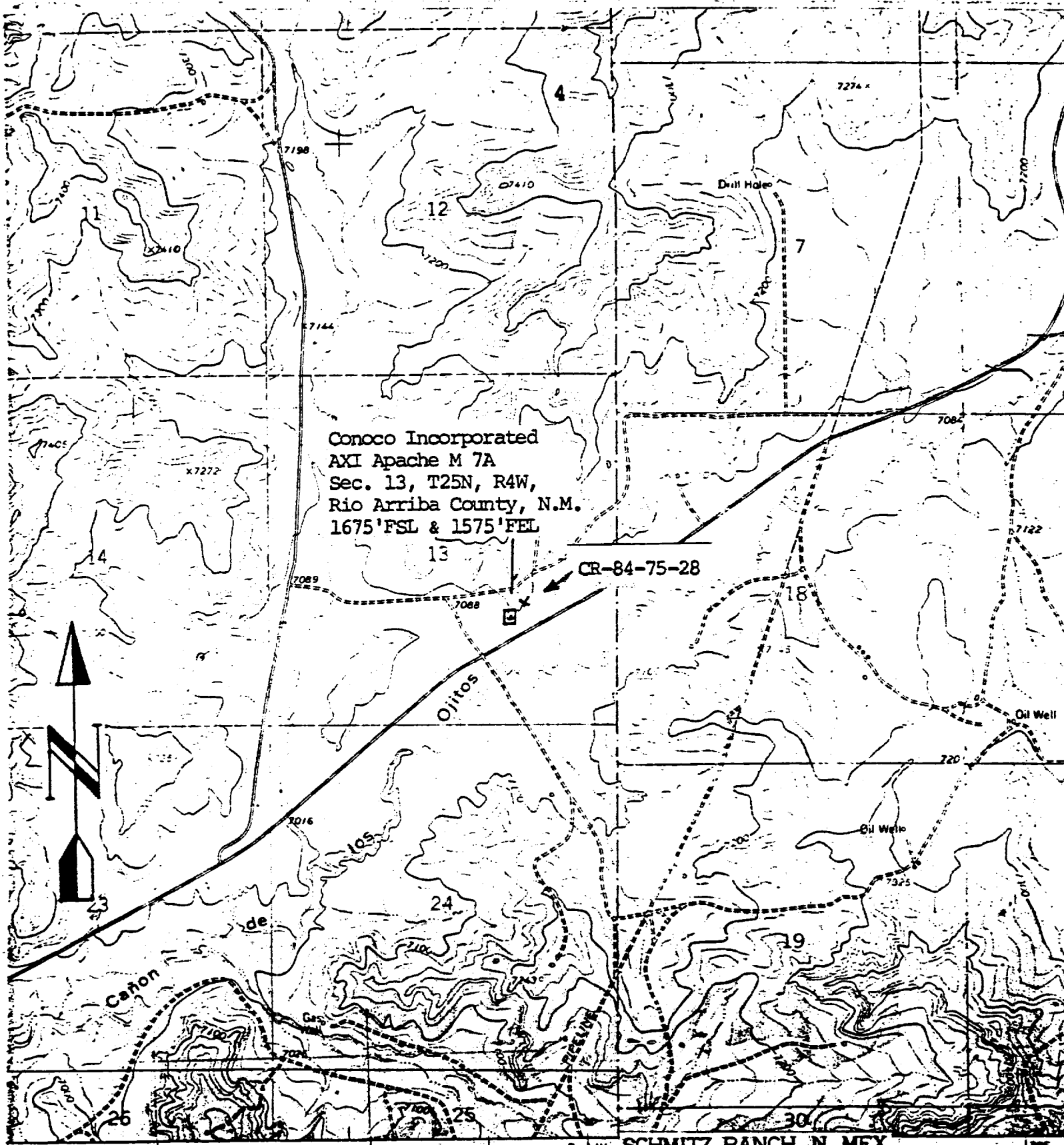
Name  
*Wm A. Tuller*  
Position  
Administrative Supervisor  
Company  
**CONOCO INC.**  
Date  
**5/22/84**

I hereby certify that the well location shown on this plat was plotted from field notes of actual survey made by me or under my supervision and that the same is true and correct to the best of my knowledge and belief.



Date Survey  
Registered Professional Engineer and/or Land Surveyor

*Neale C. Edwards*  
Certificate No.



Conoco Incorporated  
AXI Apache M 7A  
Sec. 13, T25N, R4W,  
Rio Arriba County, N.M.  
1675'FSL & 1575'FEL

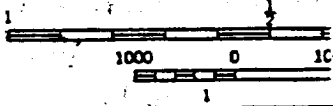
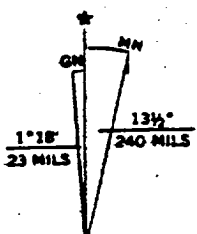
CR-84-75-28

Ojitos

Cañon

SCHMITZ RANCH, N. MEX.  
N3622.5-W10707.5/7.5

1963



AMS 4556 I NW-SERIES V881

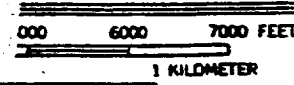


EXHIBIT B