

UNITED STATES
DEPARTMENT OF THE INTERIOR
BUREAU OF LAND MANAGEMENT

APPLICATION FOR PERMIT TO DRILL, DEEPEN, OR PLUG BACK

1A. TYPE OF WORK

DRILL ☒

DEEPEN ☐

PLUG BACK ☐

B. TYPE OF WELL

OIL
WELL ☒

GAS
WELL ☐

OTHER

SINGLE
ZONE ☐

MULTIPLE
ZONE ☒

2. NAME OF OPERATOR

Union Texas Petroleum Corporation

3. ADDRESS OF OPERATOR

P.O. Box 1290, Farmington, New Mexico 87499

4. LOCATION OF WELL (Report location clearly and in accordance with any State requirements.)*

At surface

1520' FNL; 790' FWL

At proposed prod. zone

Same as above

14. DISTANCE IN MILES AND DIRECTION FROM NEAREST TOWN OR POST OFFICE*

10.5 miles Northwest of Lindreth, New Mexico

15. DISTANCE FROM PROPOSED*

LOCATION TO NEAREST

PROPERTY OR LEASE LINE, FT.

(Also to nearest drilg. unit line, if any)

790'

790'

18. DISTANCE FROM PROPOSED LOCATION*

TO NEAREST WELL, DRILLING, COMPLETED,

OR APPLIED FOR, ON THIS LEASE, FT.

2310'

16. NO. OF ACRES IN LEASE

240.00

19. PROPOSED DEPTH

8410

17. NO. OF ACRES ASSIGNED

TO THIS WELL

40.03

20. ROTARY OR CABLE TOOLS

Rotary

21. ELEVATIONS (Show whether DF, RT, GR, etc.)

7345 GR (Ungraded)

22. APPROX. DATE WORK WILL START*

September 10, 1984

23.

PROPOSED CASING AND CEMENTING PROGRAM
"GENERAL REGISTRATION"

This action is subject to administrative
appeal pursuant to 30 CFR 290.4

SIZE OF HOLE	SIZE OF CASING	WEIGHT PER FOOT	SETTING DEPTH	QUANTITY OF CEMENT
12-1/4	New 8-5/8" K55	24.0 #	(±) 300'	250cu.ft. CL "B" 2% CaCl ₂ circ.
7-7/8	New 4-1/2" K55	11.6 #	(±) 8410'	3 stage circulated -- see below

We desire to drill this well to the above described program. After cmtg. surface pipe we W.O.C. then pressure test the pipe. Drill to T.D. using mud as the circulating medium and log the hole. Run pipe to T.D. with D.V. tools at approx. 6325' and approx. 3975' cmt. as follows: 1st stage: 20 BBLs of mud flush ahead of approx. 635 cu.ft. of 50-50 POZ W/2% Gel, 0.6% FLA and 4800# salt to circulate to the D.V. tool. 2nd stage: 20 BBLs of flocheck ahead of approx. 833 cu.ft. of 50-50 POZ W/4% Gel and 2843# of Gilsonite and tail in with 118 cu.ft. of CL "B" with 2% CaCl₂ to circ. to the D.V. tool. 3rd stage: 20 BBLs of flocheck ahead of approx. 1270 cu.ft. of 65-35 POZ W/ 12% Gel, 5390# of Gilsonite, 2% CaCl₂ and 110# of Flocele tailed in with 118 cu.ft. of CL "B" with 2% CaCl₂ to circulate to the surface. W.O.C. then drill out the D.V. tools and clean out to bottom. Perforate and fracture the Dakota and Gallup zones. Clean the well up. Run 2-3/8" J55 tbg. to the Dakota zone and nipple down the wellhead. Run a downhole pump, rods and set a pumping unit. Set the wellhead production equipment. Run a 2" pipeline and connect to our Gathering system as applied for by separate Sundry Notice. Test the well and put on production.

IN ABOVE SPACE DESCRIBE PROPOSED PROGRAM: If proposal is to deepen or plug back, give data on present productive zone and proposed new productive zone. If proposal is to drill or deepen directionally, give pertinent data on subsurface locations and measured and true vertical depths. Give blowout preventer program, if any.

24.

SIGNED

Rudy D. Mett

(This space for Federal or State use)

TITLE Area Operation Manager

DATE

August 16, 1984

PERMIT NO.

APPROVAL DATE

APPROVED BY

CONDITIONS OF APPROVAL, IF ANY:

TITLE

DATE

IT WILLIAMSON
AREA MANAGER

*See Instructions On Reverse Side

Title 18 U.S.C. Section 1001, makes it a crime for any person knowingly and willfully to make to any department or agency of the

All distances must be from the outer boundaries of the Section.

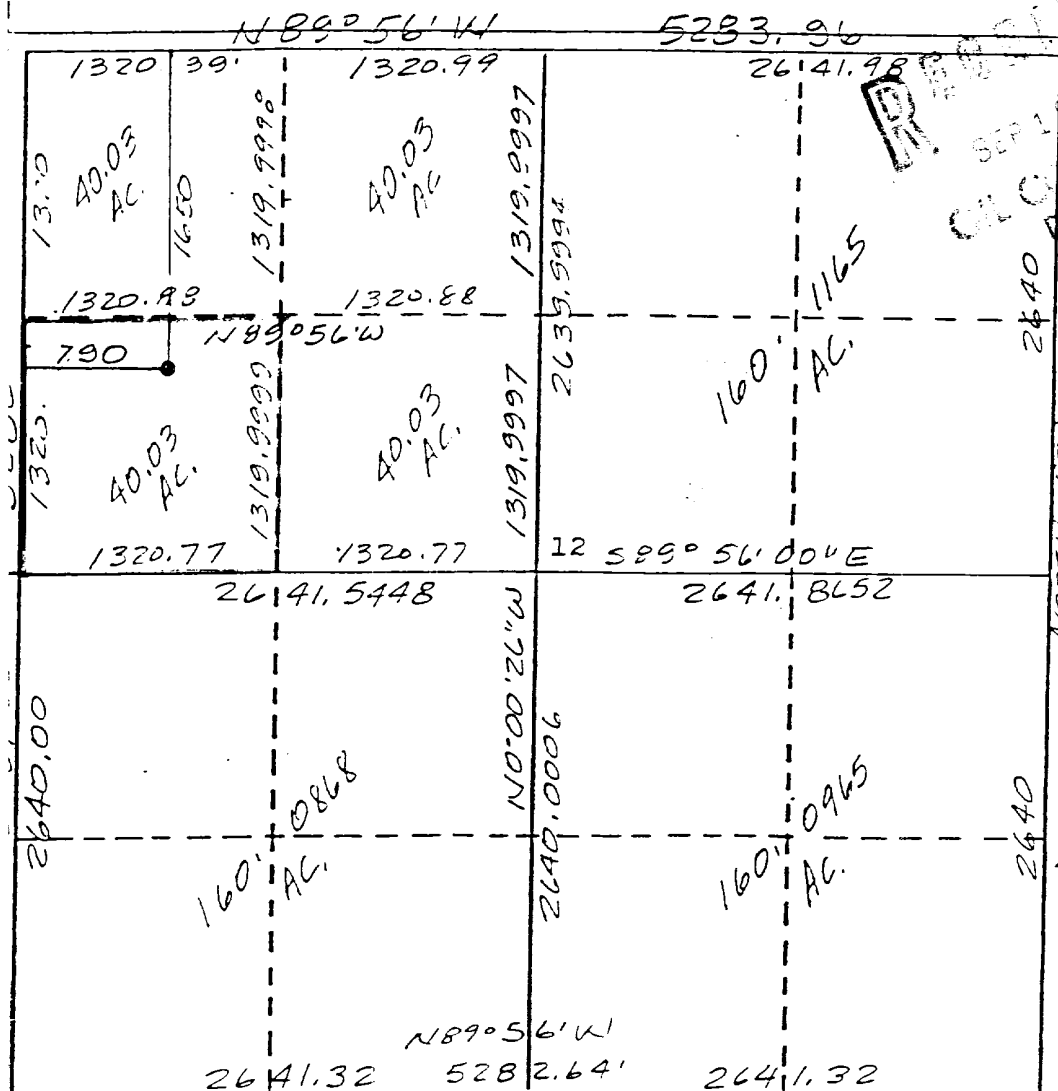
Operator UNION TEXAS PETROLEUM CORPORATION			Lease MCCRODEN		Well No. 7
Unit Letter E	Section 12	Township 25 NORTH	Range 3 WEST	County RIO ARriba	
Actual Footage Location of Well: 1650 feet from the NORTH line and 790 feet from the WEST line					
Ground Level Elev. 7345	Producing Formation Gallup Dakota		Pool Ojito	Dedicated Acreage: SWNW 40.03 Acres	

1. Outline the acreage dedicated to the subject well by colored pencil or hatchure marks on the plat below.
2. If more than one lease is dedicated to the well, outline each and identify the ownership thereof (both as to working interest and royalty).
3. If more than one lease of different ownership is dedicated to the well, have the interests of all owners been consolidated by communitization, unitization, force-pooling, etc?

☐ Yes ☒ No If answer is "yes," type of consolidation _____

If answer is "no," list the owners and tract descriptions which have actually been consolidated. (Use reverse side of this form if necessary.) Union Texas Exploration

No allowable will be assigned to the well until all interests have been consolidated (by communitization, unitization, forced-pooling, or otherwise) or until a non-standard unit, eliminating such interests, has been approved by the Division



CERTIFICATION

I hereby certify that the information contained herein is true and complete to the best of my knowledge and belief.

Rudy D. Motto
Name

Rudy D. Motto

Position

Area Operations Manager

Company

Union Texas Petroleum Corp.

Date

September 7, 1984

I hereby certify that the well location shown on this plat was plotted from field notes of actual surveys made by me or under my supervision, and that the same is true and correct to the best of my knowledge and belief.

Michael Daly
Date Surveyed

August 29, 1984

Registered Professional Engineer
and/or Land Surveyor

Michael Daly

Certificate No.

5992

