

UNITED STATES
DEPARTMENT OF THE INTERIOR
BUREAU OF LAND MANAGEMENT

APPLICATION FOR PERMIT TO DRILL, DEEPEN, OR PLUG BACK

1a. TYPE OF WORK
DRILL ☒ DEEPEN ☐ PLUG BACK ☐

b. TYPE OF WELL
OIL WELL ☒ GAS WELL ☐ OTHER ☐
SINGLE ZONE ☒ MULTIPLE ZONE ☐

2. NAME OF OPERATOR
Getty Oil Company

3. ADDRESS OF OPERATOR
P.O. Box 3360, Casper, WY 82602-3360

4. LOCATION OF WELL (Report location clearly and in accordance with any State requirements.)
At surface 1500' FNL & 950' FWL (SW/NW) of Sec. 31
At proposed prod. zone same

14. DISTANCE IN MILES AND DIRECTION FROM NEAREST TOWN OR POST OFFICE*
Approximately 11 miles Northwest of Lindrith, New Mexico

15. DISTANCE FROM PROPOSED*
LOCATION TO NEAREST PROPERTY OR LEASE LINE, FT.
(Also to nearest drlg. unit line, if any) 950'

16. NO. OF ACRES IN LEASE
1935

18. DISTANCE FROM PROPOSED LOCATION*
TO NEAREST WELL, DRILLING, COMPLETED,
OR APPLIED FOR, ON THIS LEASE, FT. 2105'

19. PROPOSED DEPTH
8230'

17. NO. OF ACRES ASSIGNED TO THIS WELL
158.52
160 acres; NW/4 of Sec. 31

20. ROTARY OR CABLE TOOLS
Rotary

DRILLING OPERATIONS AUTHORIZED ARE
SUBJECT TO COMPLIANCE WITH ATTACHED 7359' Ungraded GR
"GENERAL REQUIREMENTS"

22. APPROX. DATE WORK WILL START*
October 5, 1984

PROPOSED CASING AND CEMENTING PROGRAM

This action is subject to administrative
appeal pursuant to 30 CFR 290.

SIZE OF HOLE	SIZE OF CASING	WEIGHT PER FOOT	SETTING DEPTH	QUANTITY OF CEMENT
12 1/4"	8 5/8"	24#	300'	* 248 cu ft to cement to surface
7 7/8"	5 1/2"	14, 15.5, & 17#	8230'	*1778 cu ft 2 stage cementing to surface

Attachment "A" states drilling tools/equipment to be used, the casing and cement program, and the anticipated length of drilling activity. Also attached is the Drilling Program and the Thirteen Point Surface Use Program.

*Cement volumes will depend on volume calculated from hole caliper.

Gas is not dedicated.

RECEIVED

OCT 15 1984

OIL CON. DIV

DIST. 3

IN ABOVE SPACE DESCRIBE PROPOSED PROGRAM: If proposal is to deepen or plug back, give data on present productive zone and proposed new productive zone. If proposal is to drill or deepen directionally, give pertinent data on subsurface locations and measured and true vertical depths. Give blowout preventer program, if any.

24. SIGNED [Signature] TITLE Area Superintendent

(This space for Federal or State office use)

PERMIT NO. APPROVAL DATE

APPROVED BY TITLE

CONDITIONS OF APPROVAL, IF ANY:

NSL 1898

*See Instructions On Reverse Side

APPROVED
AS AMENDED
OCT 12 1984
[Signature] AREA MANAGER FARMINGTON RESOURCE AREA

All distances must be from the outer boundaries of the Section.

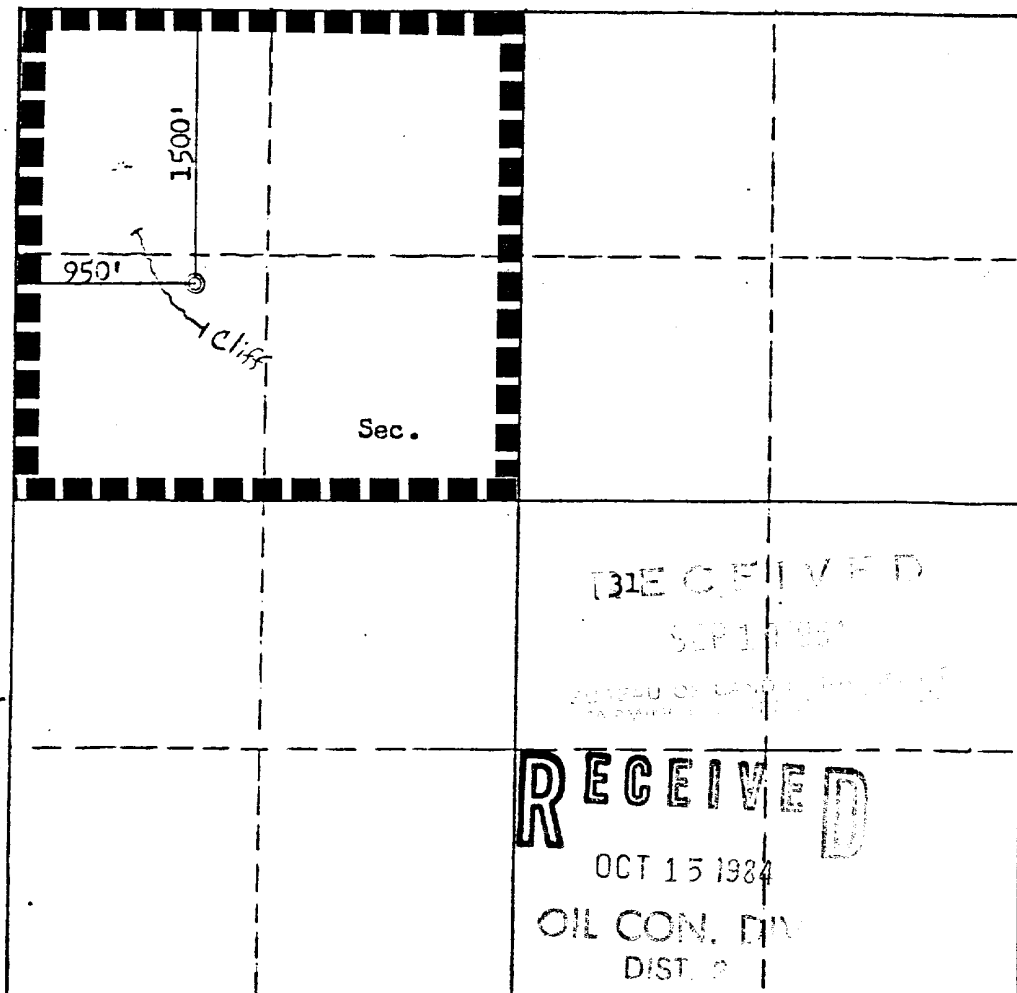
Operator GETTY OIL COMPANY			Lease L.L. McCONNELL		Well No. 11
Unit Letter E	Section 31	Township 25N	Range 3W	County Rio Arriba	
Actual Footage Location of Well: 1500 feet from the North line and 950 feet from the West line					
Ground Level Elev. 7359	Producing Formation Gallup-Dakota		Pool Lindrith Gallup-Dakota West	Dedicated Acreage 58.52 NW/4: 160 Acres	

1. Outline the acreage dedicated to the subject well by colored pencil or hatchure marks on the plat below.
2. If more than one lease is dedicated to the well, outline each and identify the ownership thereof (both as to working interest and royalty).
3. If more than one lease of different ownership is dedicated to the well, have the interests of all owners been consolidated by communitization, unitization, force-pooling, etc?

☐ Yes ☐ No If answer is "yes," type of consolidation _____

If answer is "no," list the owners and tract descriptions which have actually been consolidated. (Use reverse side of this form if necessary.) _____

No allowable will be assigned to the well until all interests have been consolidated (by communitization, unitization, forced-pooling, or otherwise) or until a non-standard unit, eliminating such interests, has been approved by the Commission.



CERTIFICATION

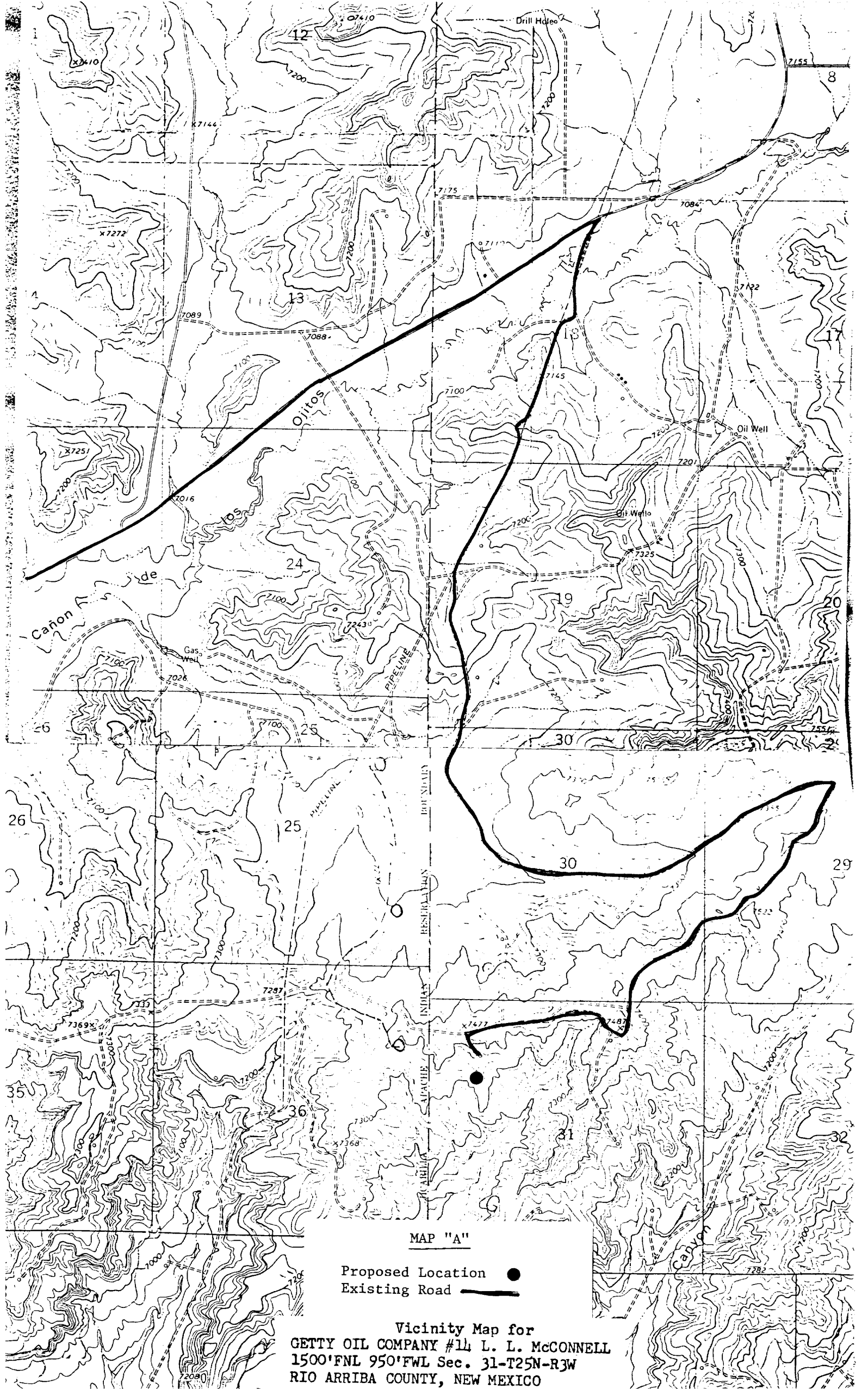
I hereby certify that the information contained herein is true and complete to the best of my knowledge and belief.

Name *W. B. ...*
Position
Area Superintendent
Company
Getty Oil Company
Date
9-7-84

I hereby certify that the well location shown on this plat was plotted from field notes of actual surveys made by me or under my supervision, and that the same is true and correct to the best of my knowledge and belief.

Date Surveyed
August 16, 1984
Registered Professional Engineer and Land Surveyor
Fred B. Kerr Jr.
Fred B. Kerr Jr.
Certificate No. 4222
3950

Scale: 1"=1000'



MAP "A"

Proposed Location ●
Existing Road —

Vicinity Map for
GETTY OIL COMPANY #14 L. L. McCONNELL
1500'FNL 950'FWL Sec. 31-T25N-R3W
RIO ARRIBA COUNTY, NEW MEXICO