

UNITED STATES
DEPARTMENT OF THE INTERIOR
BUREAU OF LAND MANAGEMENT

SUBMIT IN TRIPLICATE*
(Other instructions on
reverse side)

Form approved.
Budget Bureau No. 1004-0136
Expires August 31, 1985

APPLICATION FOR PERMIT TO DRILL, DEEPEN, OR PLUG BACK

1a. TYPE OF WORK

DRILL ☒

DEEPEN ☐

PLUG BACK ☐

b. TYPE OF WELL

OIL
WELL ☒

GAS
WELL ☐

OTHER

SINGLE
ZONE ☐

MULTIPLE
ZONE ☒

2. NAME OF OPERATOR

Amoco Production Company

3. ADDRESS OF OPERATOR

501 Airport Drive, Farmington, NM 87401

4. LOCATION OF WELL (Report location clearly and in accordance with any State requirements.)

At surface

1650' FSL X 790' FEL

At proposed prod. zone Same

14. DISTANCE IN MILES AND DIRECTION FROM NEAREST TOWN OR POST OF BUREAU OF LAND MANAGEMENT

93 miles southeast of Bloomfield, NM

15. DISTANCE FROM PROPOSED*

LOCATION TO NEAREST
PROPERTY OR LEASE LINE, FT.
(Also to nearest drig. unit line, if any)

790'

18. DISTANCE FROM PROPOSED LOCATION*
TO NEAREST WELL, DRILLING, COMPLETED,
OR APPLIED FOR, ON THIS LEASE, FT.

250' W

16. NO. OF ACRES IN LEASE

1720 160

19. PROPOSED DEPTH

8370'

17. NO. OF ACRES ASSIGNED
TO THIS WELL

320/40

20. ROTARY OR CABLE TOOLS

Rotary

21. ELEVATIONS (Show whether DF, RT, GR, etc.)

7249'

DRILLING OPERATIONS AUTHORIZED ARE

SUBJECT TO COMPLIANCE WITH ATTACHED

PROPOSED CASING AND CEMENTING PROGRAM

22. APPROX. DATE WORK WILL START*

As soon as permitted
This action is subject to administrative
appeal pursuant to 30 CFR 290.

SIZE OF HOLE	SIZE OF CASING	WEIGHT PER FOOT	SETTING DEPTH	QUANTITY OF CEMENT
12-14"	9-5/8"	32#, H-40	300'	370 c.f. Class B
8-3/4"	7"	26#, K-55	8370'	1970 c.f. Class B

Amoco proposed to drill the above well to further develop the Blanco MV/Ojito GP-DK reservoir. The well will be drilled to the surface casing point using native mud. The well will then be drilled to TD with a low solids nondispersed mud system. Completion design will be based on open hole logs. Copy of all logs will be filed upon completion. Amoco's standard blowout prevention will be employed; see attached drawing for blowout preventer design. Upon completion the well site will be cleaned and the reserve pit filled and leveled. The gas from this well is dedicated to Northwest Pipeline under contract No. 108394.

IN ABOVE SPACE DESCRIBE PROPOSED PROGRAM: If proposal is to deepen or plug back, give data on present productive zone and proposed new productive zone. If proposal is to drill or deepen directionally, give pertinent data on subsurface locations and measured and true vertical depths. Give blowout preventer program, if any.

24.

SIGNED

BDS Shaw

TITLE Administrative Supervisor

10/4/84

(This space for Federal or State office use)

PERMIT NO.

APPROVAL DATE

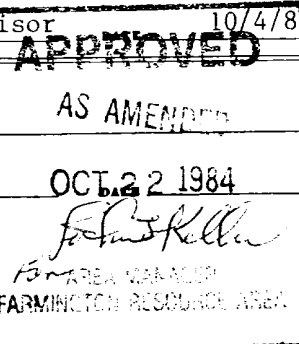
APPROVED BY

CONDITIONS OF APPROVAL, IF ANY:

TITLE

NMOCC

*See Instructions On Reverse Side



All distances must be from the outer boundaries of the Section.

Operator AMOCO PRODUCTION COMPANY			Lease FRED PHILLIPS "F"		Well No. 1A
Unit Letter I	Section 10	Township 25N	Range 3W	County Rio Arriba	
Actual Footage Location of Well: 1650 feet from the South line and 790 feet from the East line					
Ground Level Elev: 7249	Producing Formation Mesaverde & GP-DK		Pool Blanco MV/Ojito GP-DK		Dedicated Acreage: 320/40 Acres

1. Outline the acreage dedicated to the subject well by colored pencil or hachure marks on the plat below.
2. If more than one lease is dedicated to the well, outline each and identify the ownership thereof (both as to working interest and royalty).
3. If more than one lease of different ownership is dedicated to the well, have the interests of all owners been consolidated by communitization, unitization, force-pooling, etc?

☐ Yes ☒ No If answer is "yes," type of consolidation _____

If answer is "no," list the owners and tract descriptions which have actually been consolidated. (Use reverse side of this form if necessary.) _____

No allowable will be assigned to the well until all interests have been consolidated (by communitization, unitization, forced-pooling, or otherwise) or until a non-standard unit, eliminating such interests, has been approved by the Commission.

Sec.		RECEIVED OCT - 9 1984 BUREAU OF LAND MANAGEMENT BIRMINGHAM RESOURCE AREA	
1650'		790'	
		1650'	

CERTIFICATION

I hereby certify that the information contained herein is true and complete to the best of my knowledge and belief.

B.D. Shaw

Name
B. D. Shaw

Position
Adm. Supervisor

Company
APC

Date
8/22/84

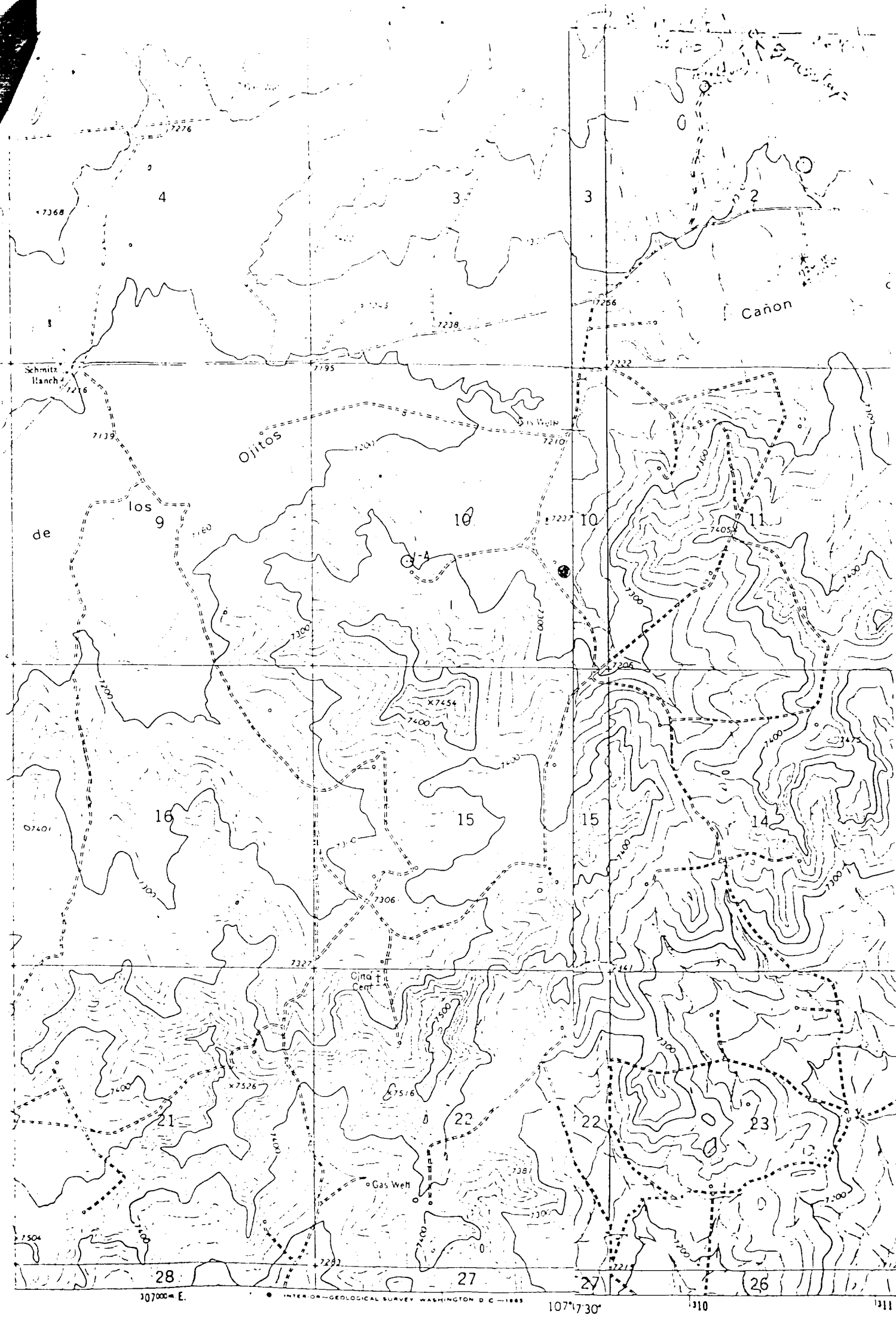
I hereby certify that the well location shown on this plat was plotted from field notes of actual surveys made by me or under my supervision, and that the same is true and correct to the best of my knowledge and belief.

Date Surveyed
August 21, 1984

Registered Professional Engineer
 and Land Surveyor

Fred B. Kerr Jr.
Fred B. Kerr Jr.

Certificate No. _____



STATE LOCATION

Vicinity Map for
 AMOCO PRODUCTION CO. #1A Fred Phillips
 1650' FSL 790' FEL Sec. 10-T25N-R3W
 RIO ARriba COUNTY, NEW MEXICO

ROAD CLASSIFICATION

Mapped, edited, and published by the Geological
 Survey of the United States
 F
 "▲"
 altimetric methods from aerial
 1958, and 1962 Field checked 1963
 1927 North American datum
 on New Mexico coordinate system
 1000-meter Universal Transverse Mercator grid ticks
 zone 13, shown in blue
 Fine red dashed lines indicate selected fence lines

SCHMITZ RANCH, N. MEX.