

UNITED STATES
DEPARTMENT OF THE INTERIOR
GEOLOGICAL SURVEY30-039-23630
5. LEASE DESIGNATION AND SERIAL NO.

NM 23032

6. IF LEASE, ADJUTEE OR TRAIL NAME

7. UNIT AGREEMENT NAME

8. FARM OR LEASE NAME

New Horizon

9. WELL NO.

1

10. FIELD AND POOL, OR WILDCAT

Gavilan Mancos/Dakota

11. SEC., T., R., M., OR ELE.
AND SURVEY OR AREA

Sec. 2, T24N, R2W

12. COUNTY OR PARISH 13. STATE

Rio Arriba

NM

APPLICATION FOR PERMIT TO DRILL, DEEPEN, OR PLUG BACK

1a. TYPE OF WORK

DRILL ☒DEEPEN ☐PLUG BACK ☐

b. TYPE OF WELL

OIL
WELL ☒GAS
WELL ☐

OTHER

SINGLE
ZONE ☐MULTIPLE
ZONE ☐

2. NAME OF OPERATOR

Jerome P. McHugh

3. ADDRESS OF OPERATOR

Box 208, Farmington, NM 87499

4. LOCATION OF WELL (Report location clearly and in accordance with any State requirements.)

At surface

990' FSL - 1850' FEL

At proposed prod. zone

BUREAU OF LAND MANAGEMENT
FARMINGTON REGIONAL OFFICE

14. DISTANCE IN MILES AND DIRECTION FROM NEAREST TOWN OR POST OFFICE*

Lindrith is 2 miles south

15. DISTANCE FROM PROPOSED*

LOCATION TO NEAREST
PROPERTY OR LEASE LINE, FT.
(Also to nearest drig. unit line, if any) 790'

16. NO. OF ACRES IN LEASE

324.88

17. NO. OF ACRES ASSIGNED
TO THIS WELL

S 320 / 320

18. DISTANCE FROM PROPOSED LOCATION*
TO NEAREST WELL, DRILLING, COMPLETED,
OR APPLIED FOR, ON THIS LEASE, FT. 1300'

to N.E. (dry hole)

19. PROPOSED DEPTH

8200'

20. ROTARY OR CABLE TOOLS

rotary

21. ELEVATIONS (Show whether DF, RT, GR, etc.) DRILLING OPERATIONS AUTHORIZED ARE

7253 GL

SUBJECT TO COMPLIANCE WITH ATTACHED

22. APPROX. DATE WORK WILL START*

ASAP

23. "GENERAL REQUIREMENTS" PROPOSED CASING AND CEMENTING PROGRAM

This action is subject to administrative
appeal pursuant to 30 CFR 290.
QUANTITY OF CEMENT

SIZE OF HOLE	SIZE OF CASING	WEIGHT PER FOOT	SETTING DEPTH	QUANTITY OF CEMENT
12 1/4"	9-5/8"	36#	200'	159 cf circulated to surface
8 1/2"	5 1/2"	17./15.5	8190'	2750 cf cemented in 3 stages and circulated to surface.

Plan to drill with spud mud to set surface pipe at 200'. Will then drill with water-mud-gel mixture to test the Dakota and Mancos formations. Plan to run IES, CDL, and CNL logs. If the well appears productive will run 5 1/2" casing, cementing in three stages. Then plan to selectively perforate, frac, clean out after frac and complete in the Mancos. Will complete in the Dakota if possible.

NMRB Requirement: GAS NOT DEDICATED

RECEIVED
DEC 18 1984
OIL CON. DIV.
DIST. 3

IN ABOVE SPACE DESCRIBE PROPOSED PROGRAM: If proposal is to deepen or plug back, give data on present productive zone and proposed new productive zone. If proposal is to drill or deepen directionally, give pertinent data on subsurface locations and measured and true vertical depths. Give blowout preventer program, if any.

24.

SIGNED

Jerry McHugh

TITLE Company Representative

(This space for Federal or State office use)

PERMIT NO.

APPROVAL DATE

APPROVED BY

TITLE

CONDITIONS OF APPROVAL, IF ANY:

Hold 104 for consolidation of acreage
oh 2

*See Instructions On Reverse Side

NMOCC

APPROVED
AS AMENDED
DEC 17 1984
DATE
/s/ J. Stan McKee
ASSISTANT MANAGER
FARMINGTON RESOURCE AREA

All distances must be from the outer boundaries of the Section.

Operator Jerome P. McHugh		Lease New Horizon		Well No. 1
Unit Letter 0	Section 2	Township 24 North	Range 2 West	County Rio Arriba
Actual Footage Location of Well: 990 feet from the South line and 1850 feet from the East line				
Ground Level Elev. 7253	Producing Formation Mancos/Dakota	Pool Gavilan Mancos/Dakota	Dedicated Acreage: 320 Acres	

1. Outline the acreage dedicated to the subject well by colored pencil or hatchure marks on the plat below.
2. If more than one lease is dedicated to the well, outline each and identify the ownership thereof (both as to working interest and royalty).
3. If more than one lease of different ownership is dedicated to the well, have the interests of all owners been consolidated by communitization, unitization, force-pooling, etc?

☐ Yes ☒ No If answer is "yes," type of consolidation _____

If answer is "no," list the owners and tract descriptions which have actually been consolidated. (Use reverse side of this form if necessary.) plan to communitize

No allowable will be assigned to the well until all interests have been consolidated (by communitization, unitization, forced-pooling, or otherwise) or until a non-standard unit, eliminating such interests, has been approved by the Division.

<div style="text-align: center;"> </div>		<div style="text-align: center;"> RECEIVED DEC 18 1984 OIL CON. DIV. DIST. 3 </div>
		<div style="text-align: center;"> RECEIVED DEC 18 1984 BUREAU OF LAND MANAGEMENT SANTA FE, N.M. </div>
<div style="text-align: center;"> SEC. 2 </div>	<div style="text-align: center;"> Various Fee Leases McHugh et al 100% </div>	<div style="text-align: center;"> McHugh 37.50% Dugan 12.50% KOGO Partnership 50% </div>

CERTIFICATION

I hereby certify that the information contained herein is true and complete to the best of my knowledge and belief.

Jerry McHugh
Name
Jerry McHugh

Position
Co. Representative

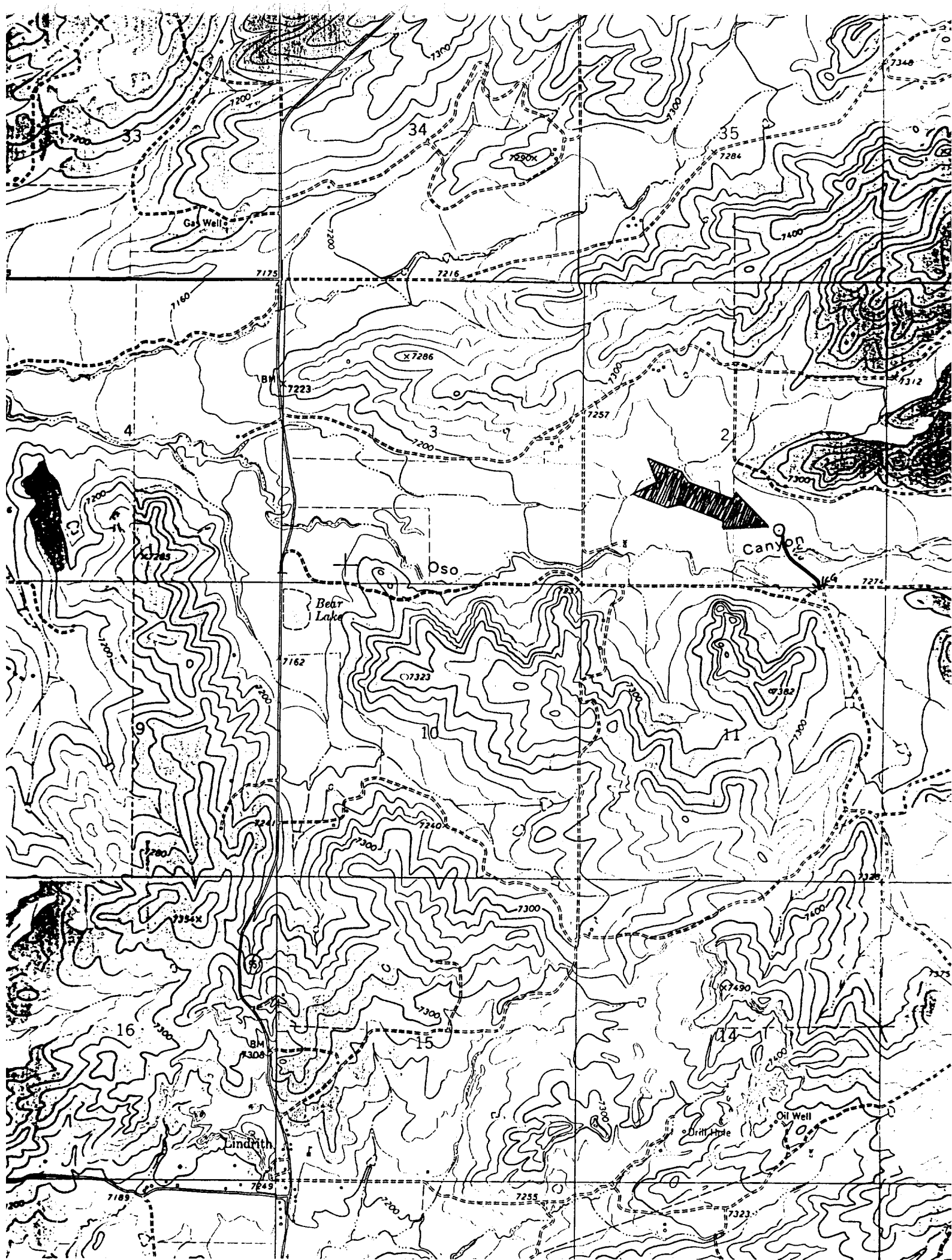
Company
Jerome P. McHugh

Date
10-29-84

I hereby certify that the location shown on this plat was obtained from field notes of October 1979 made by me or under my supervision and that the same is true and correct to the best of my knowledge.

Date Surveyed
October 10, 1984
Registered Professional Engineer
and/or Land Surveyor

Edgar L. Risenhoover
Certificate No. **5979**
Edgar L. Risenhoover, L.S.



JEROME P. MCHUGH - New Horizon #1

on lease

Existing Roads == == ==

Exhibit E

Planned Access Road(s) - - - -

Exhibit E

Distance from nearest town or reference pt.
Lindrith is 2 miles south

Type of surface dirt

Conditions good

Other none

Width 20' Maximum grades 1% through
Drainage design plan to install large arroyo
culverts in Oso wash;
will then build up
road on the culvert

Turnouts - none
Culverts - c
Gates none
Cattleguards - 66
Fence cuts

Cuts and Fills-
Plan to fill on top
of culverts w/fill
dirt. Drainage on
south side of wash

so that new road will not be wiped out by the wash when it runs full.

Access road(s) do/do not cross Fed/Ind land.