

UNITED STATES
DEPARTMENT OF THE INTERIOR
BUREAU OF LAND MANAGEMENT

APPLICATION FOR PERMIT TO DRILL, DEEPEN, OR PLUG BACK

1a. TYPE OF WORK
DRILL ☒ DEEPEN ☐ PLUG BACK ☐

b. TYPE OF WELL
OIL WELL ☐ GAS WELL ☒ OTHER ☐ SINGLE ZONE ☒ MULTIPLE ZONE ☐

2. NAME OF OPERATOR

Amoco Production Co.

3. ADDRESS OF OPERATOR

501 Airport Drive, Farmington, NM 87401

4. LOCATION OF WELL (Report location clearly and in accordance with any State requirements)
At surface

990' FSL x 790' FEL

At proposed prod. zone

Same

14. DISTANCE IN MILES AND DIRECTION FROM NEAREST TOWN OR POST OFFICE TO PROPOSED WELL LOCATION

18 miles east of Counselors NM

16. DISTANCE FROM PROPOSED LOCATION TO NEAREST PROPERTY OR LEASE LINE, FT.
(Also to nearest drig. unit line, if any) 790'

16. NO. OF ACRES IN LEASE
2560

17. NO. OF ACRES ASSIGNED TO THIS WELL
320

18. DISTANCE FROM PROPOSED LOCATION TO NEAREST WELL, DRILLING, COMPLETED, OR APPLIED FOR, ON THIS LEASE, FT.
2700' East

19. PROPOSED DEPTH
7845'

20. ROTARY OR CABLE TOOLS
Rotary

21. ELEVATIONS (Show whether DF, RT, GR, etc.)

6881' GR

22. APPROX. DATE WORK WILL START*
As soon as permitted

DRILLING OPERATIONS AUTHORIZED ARE
SUBJECT TO COMPLIANCE WITH ATTACHED
"GENERAL REQUIREMENTS".

PROPOSED CASING AND CEMENTING PROGRAM

SIZE OF HOLE	SIZE OF CASING	WEIGHT PER FOOT	SETTING DEPTH	QUANTITY OF CEMENT
12-1/4"	8-5/8"	24#, J-55	300	354 c.f. Class B
7-7/8"	4-1/2"	10.5#, K-55	7845	2682 c.f. Class B

Amoco proposes to drill the above well to further develop the Basin Dakota reservoir. The well will be drilled to the surface casing point using native mud. The well will then be drilled to TD with a low solids nondispersed mud system. Completion design will be based on open hole logs. Copy of all logs will be filed upon completion. Amoco's standard blowout prevention will be employed; see attached drawing for blowout preventer design. Upon completion the well site will be cleaned and the reserve pit filled and leveled. The gas from this well is dedicated to Northwest Pipeline Corp.

This action is subject to technical and procedural review pursuant to 43 CFR 3165.3 and appeal pursuant to 43 CFR 3165.4.

zone. If proposal is to drill or deepen directionally, give pertinent data on subsurface locations and measured and true vertical depths. Give blowout preventer program, if any.

24.

SIGNED

BD Shaw

TITLE Adm. Supervisor

DATE 5/1/85

(This space for Federal or State official use)

PERMIT NO.

RECEIVED

APPROVAL DATE

APPROVED
AS AMENDED

APPROVED BY
CONDITIONS OF APPROVAL, IF ANY:

MAY 22 1985

TITLE

MAY 20 1985

Oil CON. DIV. MOCC
DIST. 3

*See Instructions On Reverse Side

(SGD) MAT MILLENBACH
AREA MANAGER

OIL CONSERVATION DIVISION

STATE OF NEW MEXICO
AND MINERALS DEPARTMENTP. O. BOX 2088
SANTA FE, NEW MEXICO 87501Form C-107
Revised 10-1

All distances must be from the outer boundaries of the Section.

Operator AMOCO PRODUCTION COMPANY			Lease JICARILLA CONTRACT 1148		Well No. 17Y
Unit Letter P	Section 15	Township 25N	Range 5W	County Rio Arriba	
Actual Footage Location of Well: 790 feet from the South line and 790 feet from the East line					
Ground Level Elev: 6831	Producing Formation Dakota		Pool Basin Dakota	Dedicated Acreage: 320 Acres	

1. Outline the acreage dedicated to the subject well by colored pencil or hatchure marks on the plat below.
2. If more than one lease is dedicated to the well, outline each and identify the ownership thereof (both as to working interest and royalty).
3. If more than one lease of different ownership is dedicated to the well, have the interests of all owners been consolidated by communitization, unitization, force-pooling, etc?

☐ Yes ☐ No If answer is "yes," type of consolidation _____

If answer is "no," list the owners and tract descriptions which have actually been consolidated. (Use reverse side of this form if necessary.) _____

No allowable will be assigned to the well until all interests have been consolidated (by communitization, unitization, forced-pooling, or otherwise) or until a non-standard unit, eliminating such interests, has been approved by the Commission.

		RECEIVED MAY 02 1985 BUREAU OF LAND MANAGEMENT FARMINGTON RESOURCE AREA	
Sec.		15	
RECEIVED MAY 22 1985 OIL CON. DIV DIST. 3		790' 1056'	

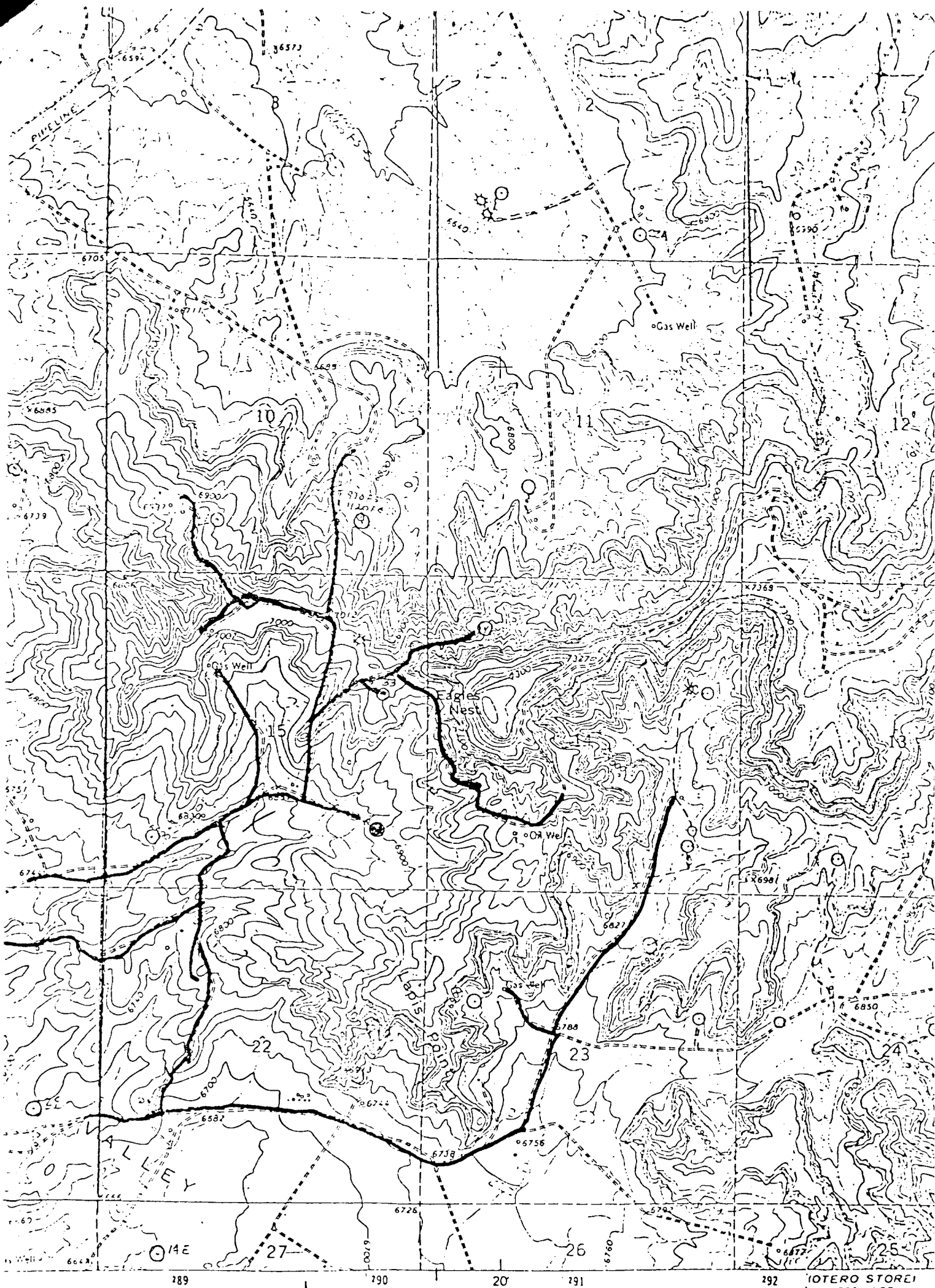
CERTIFICATION

I hereby certify that the information contained herein is true and complete to the best of my knowledge and belief.

B. D. Shaw
Name
B. D. Shaw
Position
Adm. Supervisor
Company
Amoco Production Co.
Date
5/1/85

I hereby certify that the well location shown on this plat was plotted from field notes of actual surveys made by me or under my supervision, and that the same is true and correct to the best of my knowledge and belief.

Date Surveyed
January 25, 1985
Registered Professional Engineer
and Land Surveyor
Fred B. Kerr
1056' KERR JR.

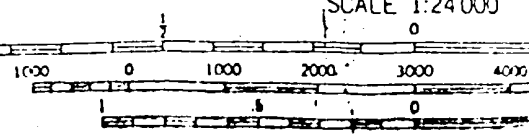


by the Geological Survey

53
datum
ordinate system, central
grid ticks,
field



--- New
--- Existing



CONTOUR INTERVAL 20 FT
DATUM: IS MEAN SEA LEVEL

Vicinity Map for
AMOCO PRODUCTION CO. #17Y JICARILLA CONTRACT 148
990' FSL 790' FEL Sec. 15-T25N-R5W
RIO ARriba COUNTY, NEW MEXICO

THIS MAP COMPLIES WITH NATIONAL MAP ACT
FOR SALE BY U.S. GEOLOGICAL SURVEY, DENVER, COLORADO
A FOLDER DESCRIBING TOPOGRAPHIC MAPS AND SYMBOLS

Exhibit B