

UNITED STATES
DEPARTMENT OF THE INTERIOR
GEOLOGICAL SURVEY

APPLICATION FOR PERMIT TO DRILL, DEEPEN, OR PLUG BACK

1a. TYPE OF WORK

DRILL ☒DEEPEN ☐PLUG BACK ☐

b. TYPE OF WELL

OIL
WELL ☐GAS
WELL ☒

OTHER

SINGLE
ZONE ☐MULTIPLE
ZONE ☒

2. NAME OF OPERATOR

Curtis J. Little

3. ADDRESS OF OPERATOR

P. O. Box 1258

Farmington NM 87499

4. LOCATION OF WELL (Report location clearly and in accordance with any State requirements)

At surface

515' FNL & 875' FEL

At proposed prod. zone

same

14. DISTANCE IN MILES AND DIRECTION FROM NEAREST TOWN OR POST OFFICE*

12 mi. NW Counselor, N.M.

15. DISTANCE FROM PROPOSED*

LOCATION TO NEAREST
PROPERTY OR LEASE LINE, FT.
(Also to nearest drlg. unit line, if any)

515'

16. NO. OF ACRES IN LEASE

1520

17. NO. OF ACRES ASSIGNED

TO THIS WELL

160 acres

18. DISTANCE FROM PROPOSED LOCATION*

TO NEAREST WELL, DRILLING, COMPLETED,
OR APPLIED FOR, ON THIS LEASE, FT.

1/2 mi.

19. PROPOSED DEPTH

3335'

20. ROTARY OR CABLE TOOLS

rotary

21. ELEVATIONS (Show whether DF, RT, GR, etc.)

6318' GR

22. APPROX. DATE WORK WILL START*

July 10, 1985

DRILLING OPERATIONS AUTHORIZED ARE
SUBJECT TO COMPLIANCE WITH ATTACHED
"GENERAL REQUIREMENTS"

PROPOSED CASING AND CEMENTING PROGRAM

This action is subject to technical and
procedural review pursuant to 43 C.F.R. 3165.3
and appeal pursuant to 43 C.F.R. 3165.4.

| SIZE OF HOLE | SIZE OF CASING | WEIGHT PER FOOT | SETTING DEPTH | QUANTITY OF CEMENT |
|--------------|----------------|-----------------|---------------|----------------------------|
| 12-1/4 | 8-5/8 | 24# | 120 | 75 sx (88c.f.) |
| 6-3/4" | 4-1/2" | 10.5# | 3335' | 250 sx poz 255 sx B(710cf) |

Propose to drill with mud, run mechanical logs, selectively perforate, test and sand/water fracture the Pictured Cliffs and Chacra Formations. BHP is not expected to exceed 900 psi.

A 10" 3000 psi WP and 6000 psi test double gate BOP with blind and pipe rams will be used for blowout prevention.

The gas is dedicated to El Paso.

Anticipated Tops:

| | |
|-------------|-------|
| Ojo Alamo | 1765' |
| Kirtland | 1870' |
| Fruitland | 2115' |
| Chacra | 3135' |
| Pict.Cliffs | 2290' |

IN ABOVE SPACE DESCRIBE PROPOSED PROGRAM: If proposal is to deepen or plug back, give data on present productive zone and proposed new productive zone. If proposal is to drill or deepen directionally, give pertinent data on subsurface locations and measured and true vertical depths. Give blowout preventer program, if any.

24.

SIGNED

Curtis J. Little

TITLE

Operator

DATE

July 2, 1985

(This space for Federal or State office use)

PERMIT NO.

APPROVAL DATE

APPROVED BY

TITLE

CONDITIONS OF APPROVAL, IF ANY:

APPROVED
AS AMENDED
DATE

JUL 11 1985

James C. Edwards Jr.
M. MILLENBACH
AREA MANAGER

NMOCC

*See Instructions On Reverse Side

OIL CONSERVATION DIVISION

STATE OF NEW MEXICO
ENERGY AND MINERALS DEPARTMENTP. O. BOX 2088
SANTA FE, NEW MEXICO 87501Form C-102
Revised 10-1-78

All distances must be from the outer boundaries of the Section.

| | | | | | |
|-------------------------------------|----------------------|------------------------|-------------------------|-----------------------------|-----------------------|
| Operator CURTIS J. LITTLE | | | Lease Salazar | | Well No. 12 |
| Unit Letter A | Section 21 | Township 25N | Range 6W | County Rio Arriba | |

Actual Footage Location of Well:

515 feet from the **North** line and **875** feet from the **East** line

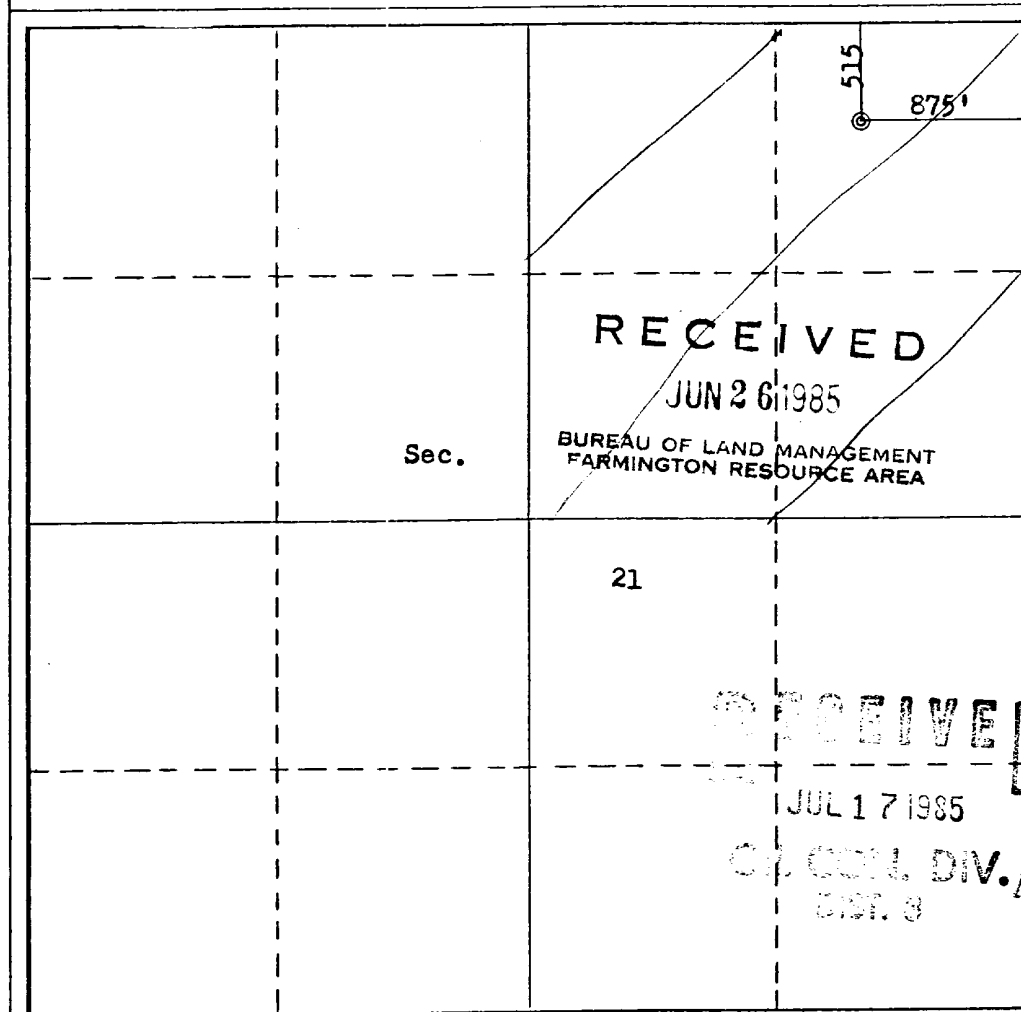
| | | | |
|-----------------------------------|--|---|--|
| Ground Level Elev. 6318 | Producing Formation Chacra & Pictured Cliffs | Pool Otero Chacra Extension Ballard PC Extension | Dedicated Acreage: 160 Acres |
|-----------------------------------|--|---|--|

- Outline the acreage dedicated to the subject well by colored pencil or hachure marks on the plat below.
- If more than one lease is dedicated to the well, outline each and identify the ownership thereof (both as to working interest and royalty).
- If more than one lease of different ownership is dedicated to the well, have the interests of all owners been consolidated by communitization, unitization, force-pooling, etc?

☐ Yes ☐ No If answer is "yes," type of consolidation _____

If answer is "no," list the owners and tract descriptions which have actually been consolidated. (Use reverse side of this form if necessary.) _____

No allowable will be assigned to the well until all interests have been consolidated (by communitization, unitization, forced-pooling, or otherwise) or until a non-standard unit, eliminating such interests, has been approved by the Commission.



CERTIFICATION

I hereby certify that the information contained herein is true and complete to the best of my knowledge and belief.

Name

Position

Company

Date

10 July 1982

I hereby certify that the well location shown on this plat was plotted from field notes of actual surveys made by me or under my supervision, and that the same is true and correct to the best of my knowledge and belief.

Date Surveyed

June 2, 1982

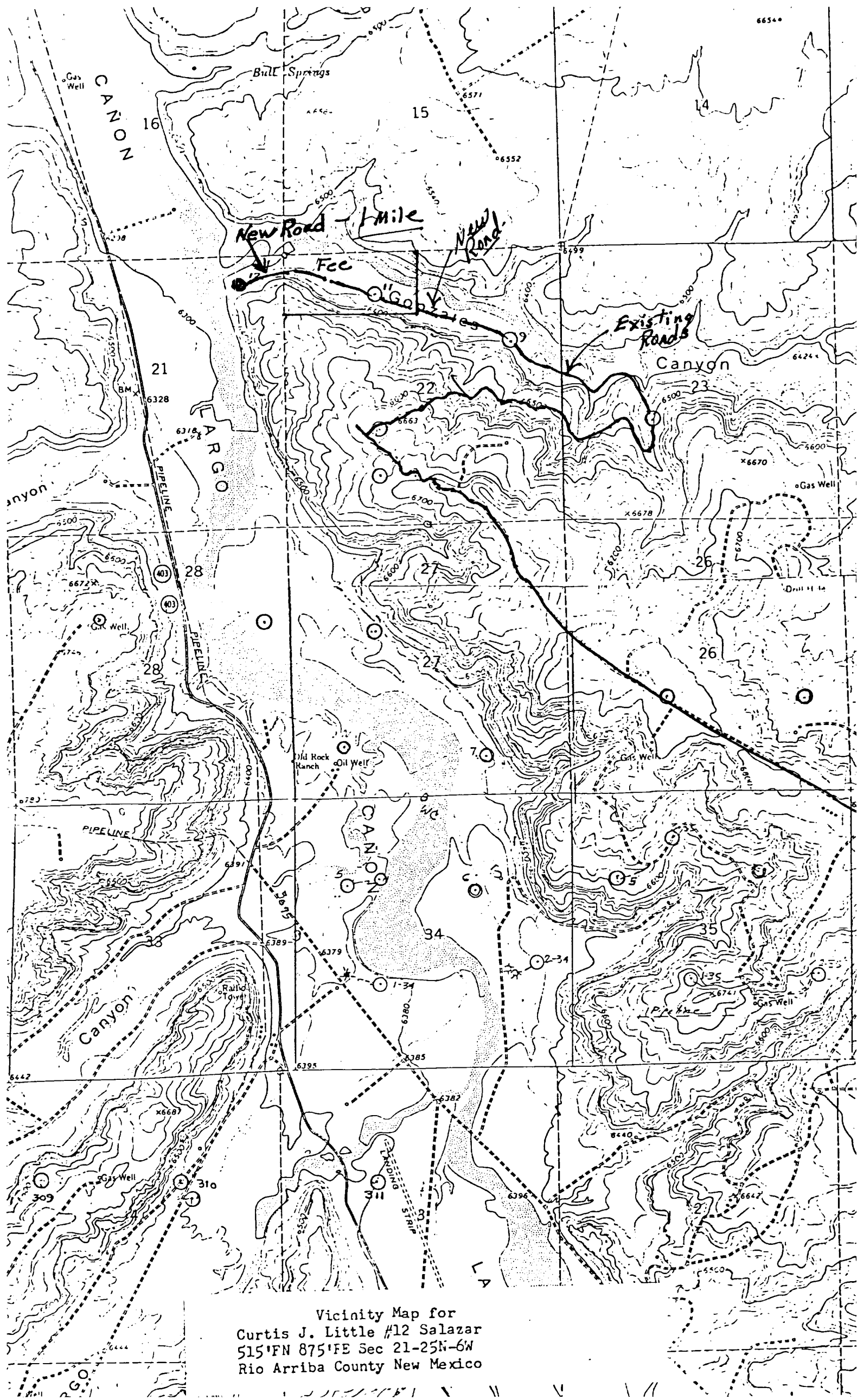
Registered Professional Engineer and/or Land Surveyor

Fred B. Kerr Jr.

Certificate No.

3950

0 330 660 990 1320 1650 1980 2310 2640 2000 1500 1000 500 0



Vicinity Map for
Curtis J. Little #12 Salazar
515'FN 875'FE Sec 21-25N-6W
Rio Arriba County New Mexico