

UNITED STATES
DEPARTMENT OF THE INTERIOR
BUREAU OF LAND MANAGEMENT

APPLICATION FOR PERMIT TO DRILL, DEEPEN, OR PLUG BACK

1a. TYPE OF WORK

DRILL ☒

DEEPEN ☐

PLUG BACK ☐

b. TYPE OF WELL

OIL
WELL ☐

GAS
WELL ☒

OTHER

SINGLE
ZONE ☒

MULTIPLE
ZONE ☐

2. NAME OF OPERATOR

Amoco Production Co.

3. ADDRESS OF OPERATOR

501 Airport Drive, Farmington, N M 87401

4. LOCATION OF WELL (Report location clearly and in accordance with any State requirements.)

At surface

2000' FNL x 1120' FEL

At proposed prod. zone

Same

14. DISTANCE IN MILES AND DIRECTION FROM NEAREST TOWN OR POST OFFICE

17 miles N. of Counselor NM

15. DISTANCE FROM PROPOSED*

LOCATION TO NEAREST
PROPERTY OR LEASE LINE, FT.
(Also to nearest drig. unit line, if any)

1120'

18. DISTANCE FROM PROPOSED LOCATION*
TO NEAREST WELL, DRILLING, COMPLETED,
OR APPLIED FOR, ON THIS LEASE, FT.

1000' NW

16. NO. OF ACRES IN LEASE

2035.8-26.15.80

19. PROPOSED DEPTH

7331'

17. NO. OF ACRES ASSIGNED
TO THIS WELL

320 188.10

20. ROTARY OR CABLE TOOLS

Rotary

21. ELEVATIONS (Show whether DF, ET, GR, etc.)

6742' GR

DRILLING OPERATIONS AUTHORIZED ARE

23. PROPOSED CASING AND CEMENTING PROGRAM

SIZE OF HOLE	SIZE OF CASING	WEIGHT PER FOOT	SETTING DEPTH	QUANTITY OF CEMENT
12-1/4"	8-5/8"	24# J55	300'	354 cf Class B
7-7/8"	5-1/2"	15.5# K55	7331'	1910 cf Class B

Amoco proposes to drill the above well to further develop the Basin Dakota reservoir. The well will be drilled to the surface casing point using native mud. The well will then be drilled to TD with a low solids nondispersed mud system. Completion design will be based on open hole logs. Copy of all logs will be filed upon completion. Amoco's standard blowout prevention will be employed; see attached drawing for blowout preventer design. Upon completion the well site will be cleaned and the reserve pit filled and leveled. The gas from this well is dedicated to Northwest Pipeline

IN ABOVE SPACE DESCRIBE PROPOSED PROGRAM: If proposal is to deepen or plug back, give data on present productive zone and proposed new productive zone. If proposal is to drill or deepen directionally, give pertinent data on subsurface locations and measured and true vertical depths. Give blowout preventer program, if any.

24.

SIGNED

BDS Shaw

TITLE Adm. Supervisor

(This space for Federal or State office use)

This action is subject to technical and procedural review pursuant to 43 CFR 3165.3 and appeal pursuant to 43 CFR 3165.4.

PROVAL DATE

DATE 5-13-85
APPROVED
AS AMENDED

DATE JUN 18 1985
J. M. MILLENBACH
AREA MANAGER

*See Instructions On Reverse Side

NEW MEXICO OIL CONSERVATION COMMISSION
WELL LOCATION AND ACREAGE DEDICATION PLAT

Form C-102
Supersedes C-128
Effective 1-1-65

All distances must be from the outer boundaries of the Section.

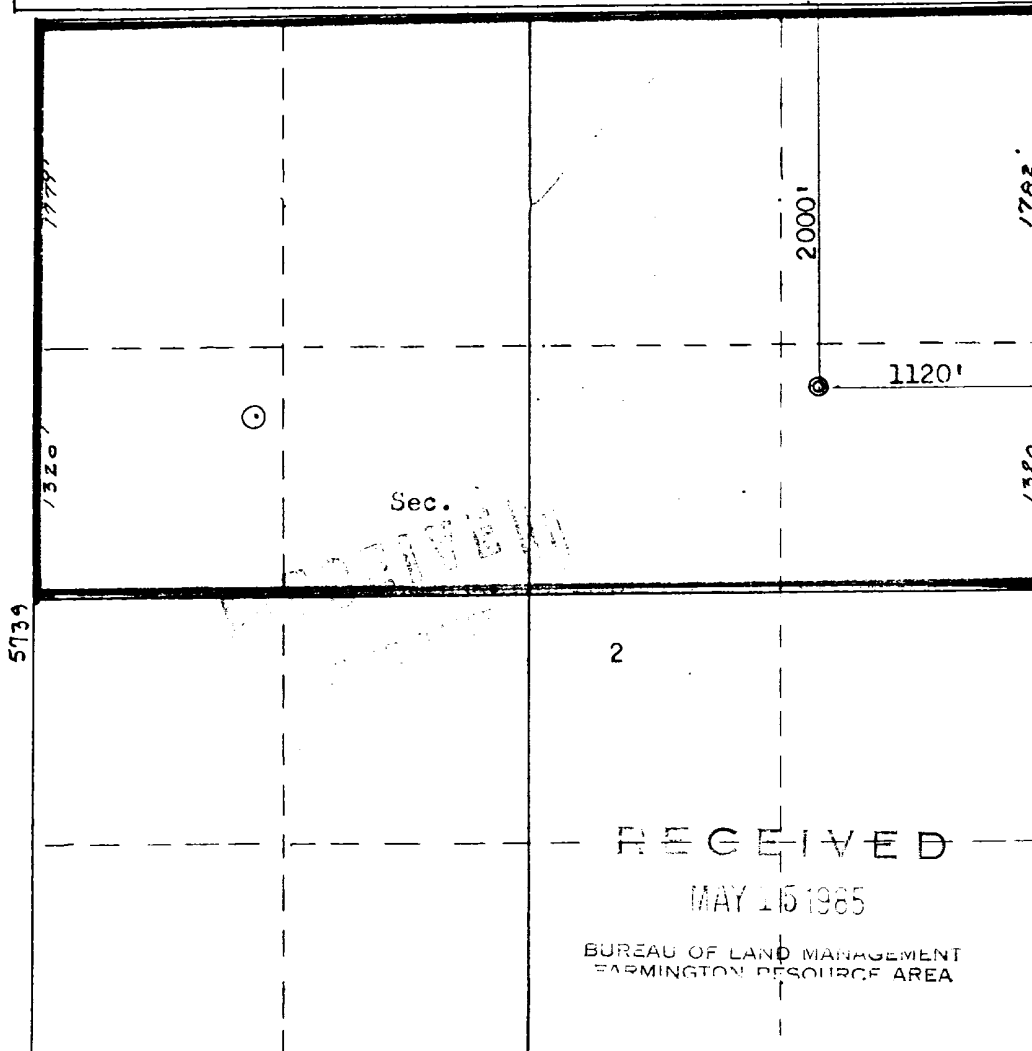
Operator AMOCO PRODUCTION COMPANY			Lease JICARILLA APACHE TRIBAL 35		Well No. 2B 5
Unit Letter H	Section 2	Township 24N	Range 5W	County Rio Arriba	
Actual Footage Location of Well: 2000 feet from the North line and 1120 feet from the East line					
Ground Level Elev. 6742	Producing Formation Dakota		Pool Willardish Coal 15A Basin Dakota		Dedicated Acreage: 320 100.10 Acres

- Outline the acreage dedicated to the subject well by colored pencil or hachure marks on the plat below.
- If more than one lease is dedicated to the well, outline each and identify the ownership thereof (both as to working interest and royalty).
- If more than one lease of different ownership is dedicated to the well, have the interests of all owners been consolidated by communitization, unitization, force-pooling, etc?

☐ Yes ☐ No If answer is "yes," type of consolidation _____

If answer is "no," list the owners and tract descriptions which have actually been consolidated. (Use reverse side of this form if necessary.) _____

No allowable will be assigned to the well until all interests have been consolidated (by communitization, unitization, forced-pooling, or otherwise) or until a non-standard unit, eliminating such interests, has been approved by the Commission.



CERTIFICATION

I hereby certify that the information contained herein is true and complete to the best of my knowledge and belief.

B. D. Shaw

Name

Adm. Supervisor

Position

Amoco Production Co.

Company

5-13-85

Date

I hereby certify that the well location shown on this plat was plotted from field notes of actual surveys made by me or under my supervision, and that the same is true and correct to the best of my knowledge and belief.

Date Surveyed

January 24, 1985

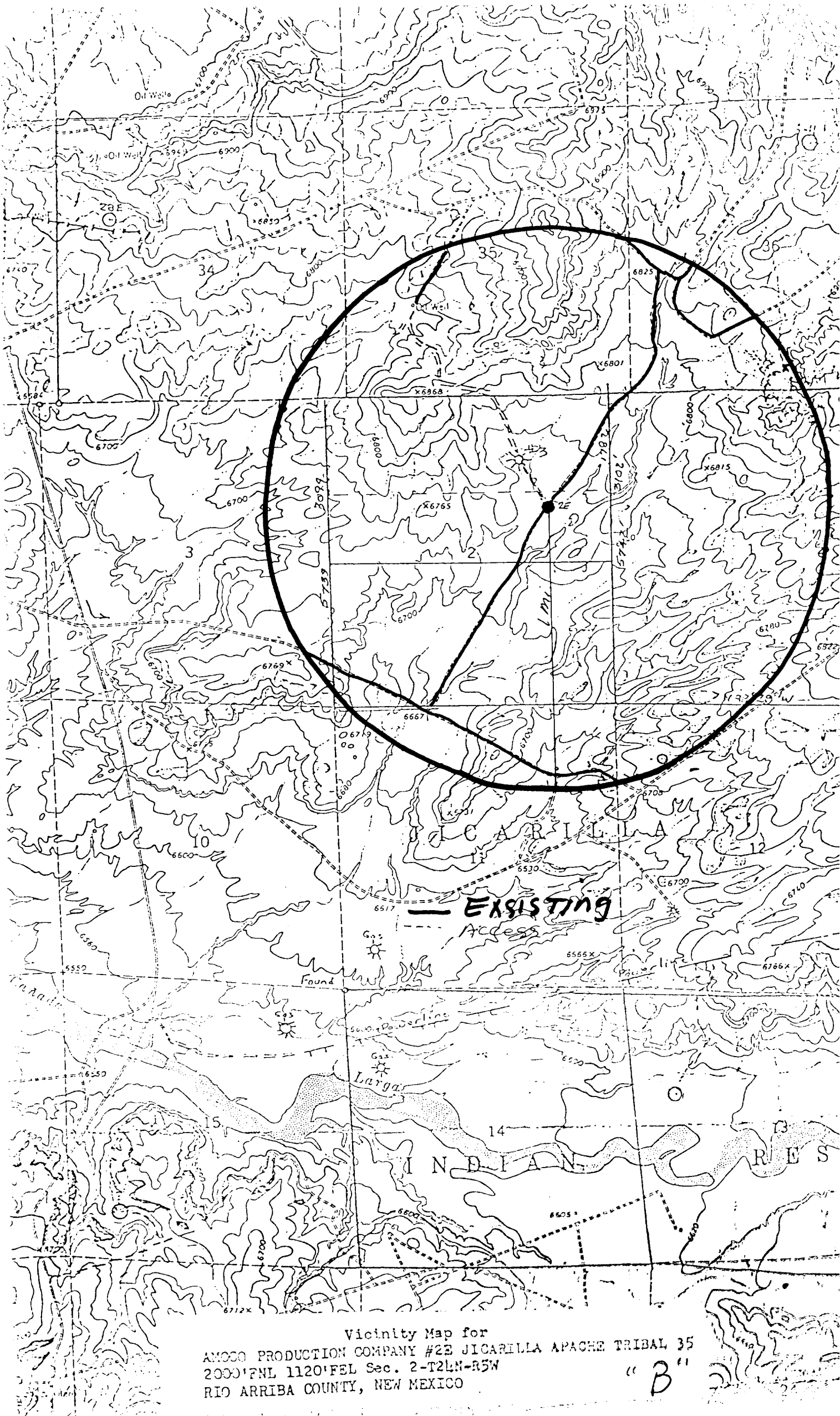
Registered Professional Engineer

and Land Surveyor

Fred B. Kerr

Certification No. B. KERR

2950



Vicinity Map for
ANOCO PRODUCTION COMPANY #2E JICARILLA APACHE TRIBAL 35
2000'PNL 1120'FEL Sec. 2-T2LN-R5W
RIO ARRIBA COUNTY, NEW MEXICO

"B"