

UNITED STATES  
DEPARTMENT OF THE INTERIOR  
BUREAU OF LAND MANAGEMENT

APPLICATION FOR PERMIT TO DRILL, DEEPEN, OR PLUG BACK

1a. TYPE OF WORK  
DRILL ☒ DEEPEN ☐ PLUG BACK ☐

b. TYPE OF WELL  
OIL WELL ☐ GAS WELL ☒ OTHER ☐ SINGLE ZONE ☒ MULTIPLE ZONE ☐

2. NAME OF OPERATOR

Amoco Production Co.

3. ADDRESS OF OPERATOR

501 Airport Drive, Farmington, N.M. 87401

4. LOCATION OF WELL (Report location clearly and in accordance with any State requirements.)  
At surface 1020' FNL x 860' FWL MAY 15 1985

At proposed prod. zone Same

14. DISTANCE IN MILES AND DIRECTION FROM NEAREST TOWN OR RESERVATION RESOURCE AREA

16 miles N. of Counselor NM

15. DISTANCE FROM PROPOSED LOCATION TO NEAREST PROPERTY OR LEASE LINE, FT. (Also to nearest drig. unit line, if any) 860'

18. DISTANCE FROM PROPOSED LOCATION TO NEAREST WELL, DRILLING, COMPLETED, OR APPLIED FOR, ON THIS LEASE, FT. 2000'

21. ELEVATIONS (Show whether DF, RT, GR, etc.)  
6726' GR

23. PROPOSED CASING AND CEMENTING PROGRAM

SIZE OF HOLE	SIZE OF CASING	WEIGHT PER FOOT	SETTING DEPTH	QUANTITY OF CEMENT
12-1/4"	8-5/8"	24# J55	300'	354 cf Class B
7-7/8"	5-1/2"	15.5# K-55	7285'	1897 cf Class B

Amoco proposes to drill the above well to further develop the Basin Dakota reservoir. The well will be drilled to the surface casing point using native mud. The well will then be drilled to TD with a low solids nondispersed mud system. Completion design will be based on open hole logs. Copy of all logs will be filed upon completion. Amoco's standard blowout prevention will be employed; see attached drawing for blowout preventer design. Upon completion the well site will be cleaned and the reserve pit filled and leveled. The gas from this well is dedicated to Northwest Pipeline

IN ABOVE SPACE DESCRIBE PROPOSED PROGRAM: If proposal is to deepen or plug back, give data on present productive zone and proposed new productive zone. If proposal is to drill or deepen directionally, give pertinent data on subsurface locations and measured and true vertical depths. Give blowout preventer program, if any.

24. SIGNED BD Shaw TITLE Adm. Supervisor DATE 5-13-85

(This space for Federal or State office use)

This action is subject to technical and procedural review pursuant to 43 CFR 3165.3 and appeal pursuant to 43 CFR 3165.4.

CONDITIONS OF ACCEPTANCE

APPROVAL DATE

APPROVED  
AS AMENDED

DATE MAY 18 1985

John S. Kahan  
M. MILLENBACH  
AREA MANAGER

NMOCC

\*See Instructions On Reverse Side

All distances must be from the outer boundaries of the Section.

Operator AMOCO PRODUCTION COMPANY		Lease JICARILLA APACHE TRIBAL 35		Well No. 3
Unit Letter D	Section 12	Township 24N	Range 5W	County Rio Arriba
Actual Footage Location of Well: 1020 feet from the North line and 860 feet from the West line				
Ground Level Elev. 6726	Producing Formation Dakota	Pool Basin-Dakota	Dedicated Acreage: 320 Acres	

1. Outline the acreage dedicated to the subject well by colored pencil or hatchure marks on the plat below.
2. If more than one lease is dedicated to the well, outline each and identify the ownership thereof (both as to working interest and royalty).
3. If more than one lease of different ownership is dedicated to the well, have the interests of all owners been consolidated by communitization, unitization, force-pooling, etc?

☐ Yes   ☐ No   If answer is "yes," type of consolidation

If answer is "no," list the owners and tract descriptions which have actually been consolidated. (Use reverse side of this form if necessary.)

No allowable will be assigned to the well until all interests have been consolidated (by communitization, unitization, forced-pooling, or otherwise) or until a non-standard unit, eliminating such interests, has been approved by the Commission.

860'

1020'

Sec. 12

RECEIVED  
MAY 15 1965  
BUREAU OF LAND MANAGEMENT  
FARMINGTON RESOURCE AREA

### CERTIFICATION

I hereby certify that the information contained herein is true and complete to the best of my knowledge and belief.

B. D. Shaw

Name: \_\_\_\_\_

Adm. Supervisor

Position

Amoco Production Co.

Company

5-13-85

Date \_\_\_\_\_

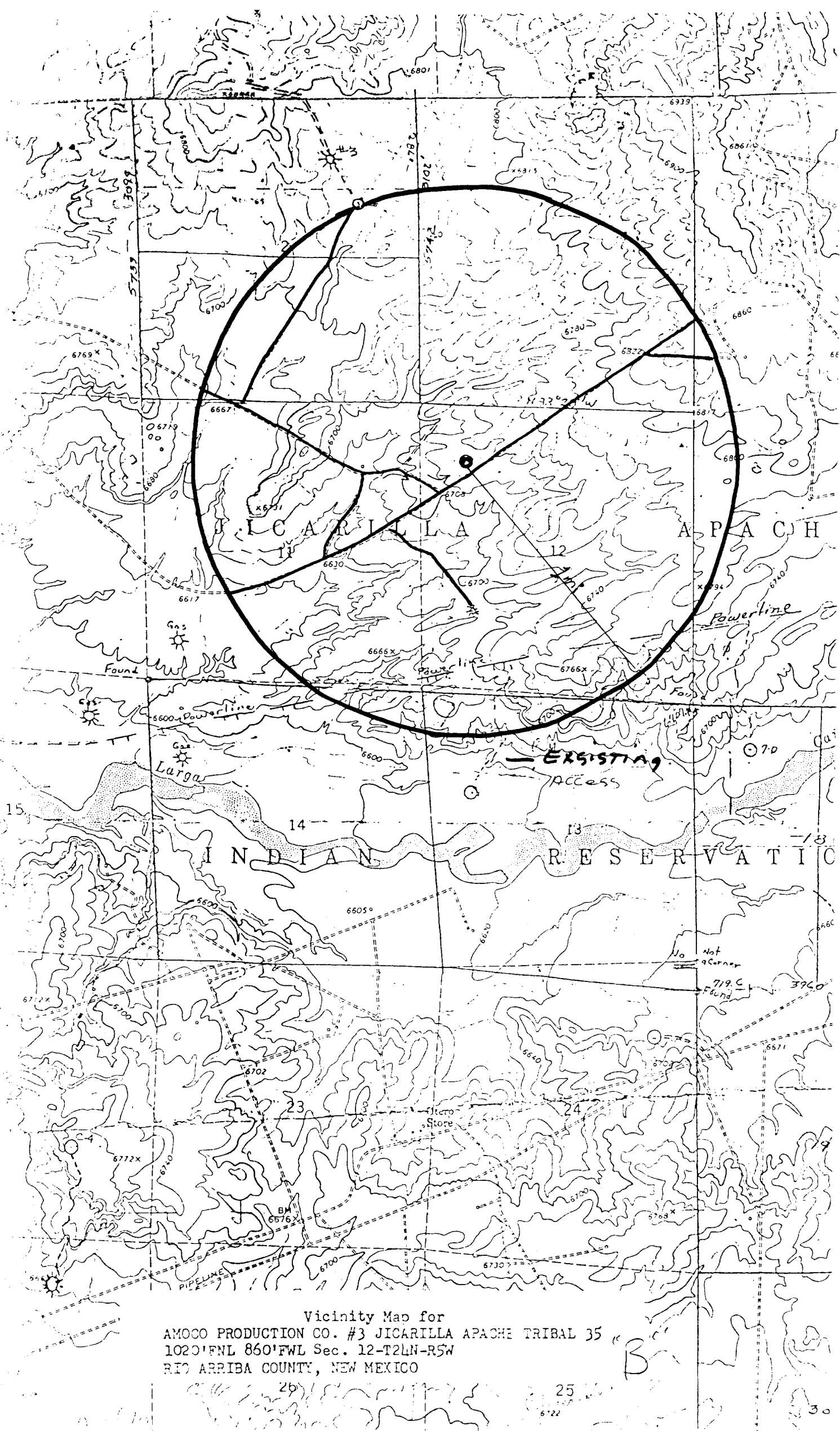
I hereby certify that the well location shown on this plat was plotted from field notes of actual surveys made by me or under my supervision, and that the same is true and correct to the best of my knowledge and belief.

Date Surveyed \_\_\_\_\_

Registered Professional Engineer  
and Land Surveyor

Fred (3Ker)

Certificate No. \_\_\_\_\_



Vicinity Map for  
AMOCO PRODUCTION CO. #3 JICARILLA APACHE TRIBAL 35  
1020'FWL 860'FWL Sec. 12-T24N-R5W  
RIO ARRIBA COUNTY, NEW MEXICO

B