

UNITED STATES  
DEPARTMENT OF THE INTERIOR  
BUREAU OF LAND MANAGEMENT

APPLICATION FOR PERMIT TO DRILL, DEEPEN, OR PLUG BACK

1a. TYPE OF WORK  
DRILL ☒ DEEPEN ☐ PLUG BACK ☐

b. TYPE OF WELL  
OIL WELL ☒ GAS WELL ☐ OTHER ☐  
SINGLE ZONE ☐ MULTIPLE ZONE ☒

2. NAME OF OPERATOR  
Southland Royalty Company

3. ADDRESS OF OPERATOR  
P.O. Drawer 570, Farmington, New Mexico 87499

4. LOCATION OF WELL (Report location clearly and in accordance with State requirements)  
At surface (G) 1710' FNL & 1710' FEL  
At proposed prod. zone

14. DISTANCE IN MILES AND DIRECTION FROM NEAREST TOWN OR POST OFFICE  
4 Miles Northeast of Lindrith, New Mexico

15. DISTANCE FROM PROPOSED\*  
LOCATION TO NEAREST  
PROPERTY OR LEASE LINE, FT.  
(Also to nearest drig. unit line, if any) 1710'

16. NO. OF ACRES IN LEASE  
560

17. NO. OF ACRES ASSIGNED  
TO THIS WELL  
N-320/N-320

18. DISTANCE FROM PROPOSED LOCATION\*  
TO NEAREST WELL, DRILLING, COMPLETED,  
OR APPLIED FOR, ON THIS LEASE, FT. 900'

19. PROPOSED DEPTH  
8245'

20. ROTARY OR CABLE TOOLS  
Rotary

21. ELEVATIONS (Show whether DF, RT, GR, etc.)  
7453' GL

DRILLING OPERATIONS AUTHORIZED ARE  
SUBJECT TO COMPLIANCE WITH ATTACHED

22. APPROX. DATE WORK WILL START\*  
July 15, 1985

23. PROPOSED CEMENTING PROGRAM  
GENERAL SING AND CEMENTING PROGRAM

SIZE OF HOLE	SIZE OF CASING	WEIGHT PER FOOT	SETTING DEPTH	QUANTITY OF CEMENT
12-1/4"	New 9-5/8"	32.30#, H-40	400'	248 cu.ft. (Circulate to surface)
7-7/8"	New 5-1/2"	15.50#, K-55	7000' Stage 1:	364 cuft (Cover Gallup-Mancos)
7-7/8"	New 5-1/2"	17.00#, K-55	8245' Stage 2:	159 cuft (Cover Cliff House)
			Stage 3:	314 cuft (Cover Nacimiento)

Surface formation is San Jose.

Top of Nacimiento sand is at 2520'.

Top of Pictured Cliffs sand is at 3505'

Fresh water mud will be used to drill from surface to total depth.

It is anticipated that an IEL, GR-CDL/CNL will be run from total depth to surface casing.

No abnormal pressures or poisonous gases are anticipated in this well.

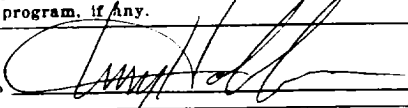
It is expected that this well will be drilled before August 1, 1985.

This depends on time required for approvals, rig availability and the weathr.

Gas is not dedicated.

This action is subject to technical and  
procedural review pursuant to 43 CFR 3165.3  
and appeal pursuant to 43 CFR 3165.4.

IN ABOVE SPACE DESCRIBE PROPOSED PROGRAM: If proposal is to deepen or plug back, give data on present productive zone and proposed new productive zone. If proposal is to drill or deepen directionally, give pertinent data on subsurface locations and measured and true vertical depths. Give blowout preventer program, if any.

SIGNED  TITLE Dist. Operations Engineer DATE June 6, 1985

(This space for Federal or State office use)

PERMIT NO.

APPROVAL DATE

APPROVED BY

TITLE

CONDITIONS OF APPROVAL, IF ANY:

AUG 2 1985

NMOCC

OIL CON. DIV.

See Instructions On Reverse Side

DIST. 3

APPROVED  
AS AMENDED

JUL 31 1985

M. MILLENBACH  
AREA MANAGER

NEW MEXICO OIL CONSERVATION COMMISSION  
WELL LOCATION AND ACREAGE DEDICATION PLAT

Form C-102  
Supersedes C-128  
Effective 1-1-65

All distances must be from the outer boundaries of the Section.

Operator <b>SOUTHLAND ROYALTY COMPANY</b>		Lease <b>HILL FEDERAL</b>		Well No. <b>2</b>
Unit Letter <b>G</b>	Section <b>25</b>	Township <b>25N</b>	Range <b>2W</b>	County <b>Rio Arriba</b>
Actual Footage Location of Well: <b>1710</b> feet from the <b>North</b> line and <b>1710</b> feet from the <b>East</b> line				
Ground Level Elev. <b>7453' GL</b>	Producing Formation <b>Mancos/ Greenhorn-Graneros-Dakota</b>		Pool <b>Gavilan/Gavilan</b>	Dedicated Acreage <b>1.320</b> Acres

1. Outline the acreage dedicated to the subject well by colored pencil or hatchure marks on the plat below.
2. If more than one lease is dedicated to the well, outline each and identify the ownership thereof (both as to working interest and royalty).
3. If more than one lease of different ownership is dedicated to the well, have the interests of all owners been consolidated by communitization, unitization, force-pooling, etc?

☐ Yes ☐ No If answer is "yes," type of consolidation Communitization

If answer is "no," list the owners and tract descriptions which have actually been consolidated. (Use reverse side of this form if necessary.)

No allowable will be assigned to the well until all interests have been consolidated (by communitization, unitization, forced-pooling, or otherwise) or until a non-standard unit, eliminating such interests, has been approved by the Commission.

SF-081296		NM-03991	
NM-03742	Sec.	1710'	
25		1710'	
BUREAU OF LAND MANAGEMENT		FARMINGTON RESOURCE AREA	

CERTIFICATION

I hereby certify that the information contained herein is true and complete to the best of my knowledge and belief.

Name  
**C. Terry Hobbs**

Position  
**District Operations Engineer**

Company  
**Southland Royalty Company**

Date  
**June 6, 1985**

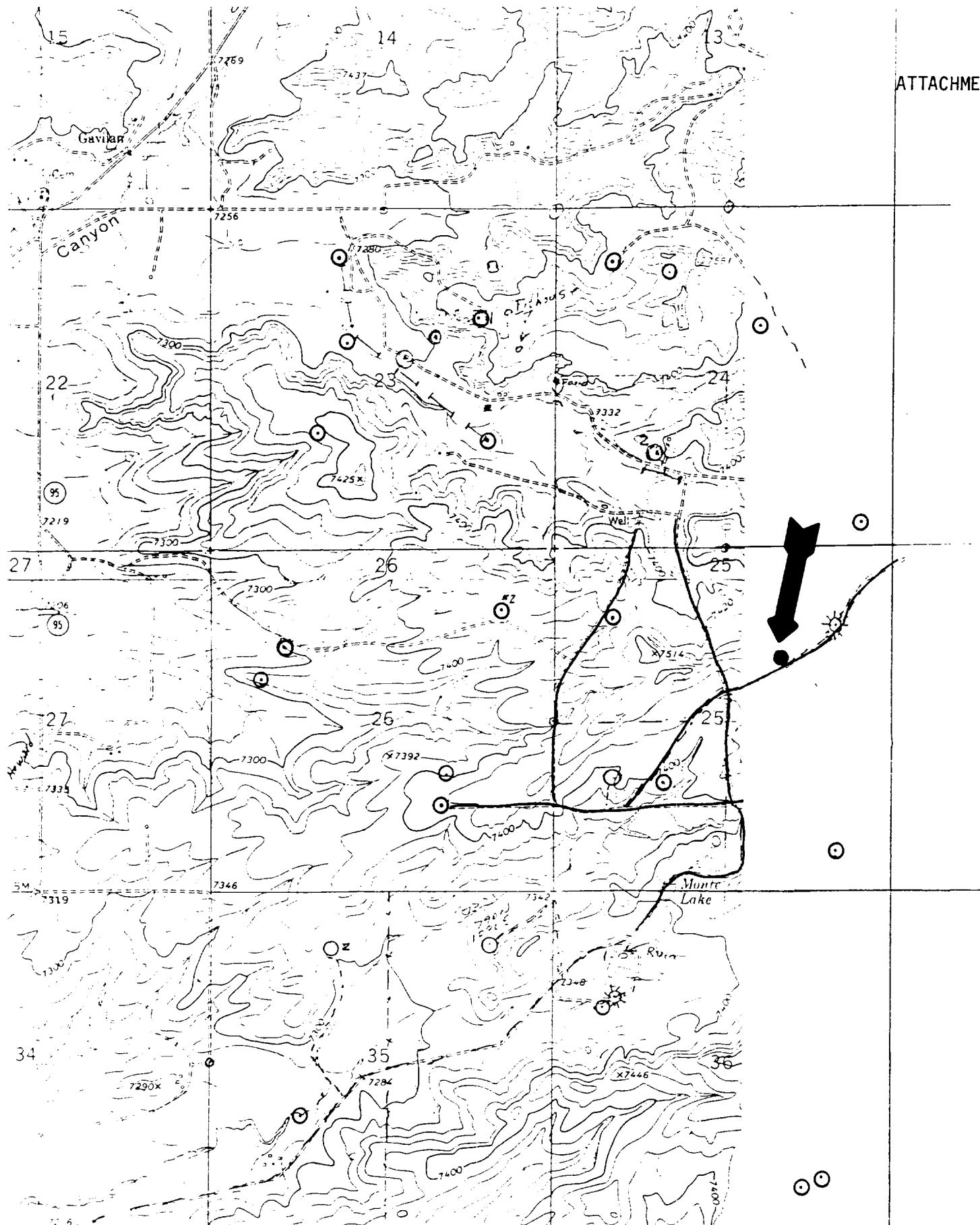
I hereby certify that the well location shown on this plat was plotted from field notes of actual surveys made by me or under my supervision, and that the same is true and correct to the best of my knowledge and belief.

Date Surveyed  
**May 17, 1985**

Registered Professional Engineer and Land Surveyor  
  
**Fred B. Kerr Jr.**

Certificate No. **3950**

Scale: 1"=1000'



Vicinity Map for  
 SOUTHLAND ROYALTY COMPANY #2 HILL FEDERAL  
 1710'FNL 1710'FEL Sec. 25-T25N-R2W  
 RIO ARriba COUNTY, NEW MEXICO

PROPOSED LOCATION ●  
 EXISTING LOCATIONS ○  
 EXISTING ROADS —