

UNITED STATES
DEPARTMENT OF THE INTERIOR
GEOLOGICAL SURVEY

APPLICATION FOR PERMIT TO DRILL, DEEPEN, OR PLUG BACK

1a. TYPE OF WORK

DRILL ☒DEEPEN ☐PLUG BACK ☐

b. TYPE OF WELL

OIL
WELL ☒GAS
WELL ☐

OTHER

SINGLE
ZONE ☒MULTIPLE
ZONE ☐

2. NAME OF OPERATOR

Minel, Inc.

3. ADDRESS OF OPERATOR

457-C Washington SE
Albuquerque NM 87108

4. LOCATION OF WELL (Report location clearly and in accordance with any State requirements.)*

At surface

1570'FNL & 790'FEL

At proposed prod. zone
same

14. DISTANCE IN MILES AND DIRECTION FROM NEAREST TOWN OR POST OFFICE*

20 miles NE of Counselors N.M.

BUREAU OF LAND MANAGEMENT
FARMINGTON RESOURCE AREA

15. DISTANCE FROM PROPOSED*

LOCATION TO NEAREST
PROPERTY OR LEASE LINE, FT.
(Also to nearest drlg. unit line, if any)

790

16. NO. OF ACRES IN LEASE

116.17

18. DISTANCE FROM PROPOSED LOCATION*

TO NEAREST WELL, DRILLING, COMPLETED,
OR APPLIED FOR, ON THIS LEASE, FT.

1000

19. PROPOSED DEPTH
8390

17. NO. OF ACRES ASSIGNED

TO THIS WELL

58.0160 (Lot 1)

20. ROTARY OR CABLE TOOLS

Rotary

21. ELEVATIONS (Show whether DF, RT, GR, etc.)

7335'GR

22. APPROX. DATE WORK WILL START*

May 15, 1985

23.

PROPOSED CASING AND CEMENTING PROGRAM

This action is subject to administrative
appeal pursuant to 30 CFR 290.
QUANTITY OF CEMENT

SIZE OF HOLE	SIZE OF CASING	WEIGHT PER FOOT	SETTING DEPTH	QUANTITY OF CEMENT
12-1/4	9-5/8	36	200	150cf. Circulate to surface
8-3/4 & 7-7/8	4-1/2	11.6	8390	700cf 6200-TD
				2nd Stage 1500cf 3200-6200

Propose to drill with mud, run mechanical logs, selectively test, perforate, and sand/water frac the Gallup and Dakota formations. A 10" 3000 psi W.P. and 6000 psi test BOP with blind and pipe rams will be used for blowout prevention.

The gas is not dedicated.

The NE NE Lot 1 of Section 2 is dedicated to the Gallup & Dakota formations.

IN ABOVE SPACE DESCRIBE PROPOSED PROGRAM: If proposal is to deepen or plug back, give data on present productive zone and proposed new productive zone. If proposal is to drill or deepen directionally, give pertinent data on subsurface locations and measured and true vertical depths. Give blowout preventer program, if any.

24.

SIGNED

TITLE

agent

DATE

4-22-1985

(This space for Federal or State office use)

This action is subject to technical and procedural review pursuant to 43 CFR 3165.3 and appeal pursuant to 43 CFR 3165.4.

APPROVAL DATE

APPROVED
AS AMENDED

DATE

SEP 11 1985

J. Stan McKee
M. MILLENBACH
AREA MANAGER

*See Instructions On Reverse Side

NMOCC

NEW MEXICO OIL CONSERVATION COMMISSION
WELL LOCATION AND ACREAGE DEDICATION F. AT

Form C-102
Supersedes C-128
Effective 1-1-65

All distances must be from the outer boundaries of the Section.

Operator MINEL, INCORPORATED			Lease CAYIAS		Well No. 2
Unit Letter A (lot 1)	Section 2	Township 25N	Range 3W	County Rio Arriba	
Actual Footage Location of Well: 1570 feet from the North line and 790 feet from the East line					
Ground Level Elev. 7335	Producing Formation Gallup/Dakota		Pool Ojito	Dedicated Acreage 5.201-60 Acres	

1. Outline the acreage dedicated to the subject well by colored pencil or hachure marks on the plat below.
2. If more than one lease is dedicated to the well, outline each and identify the ownership thereof (both as to working interest and royalty).
3. If more than one lease of different ownership is dedicated to the well, have the interests of all owners been consolidated by communitization, unitization, force-pooling, etc?

☐ Yes ☐ No If answer is "yes," type of consolidation _____

If answer is "no," list the owners and tract descriptions which have actually been consolidated. (Use reverse side of this form if necessary.) _____

No allowable will be assigned to the well until all interests have been consolidated (by communitization, unitization, forced-pooling, or otherwise) or until a non-standard unit, eliminating such interests, has been approved by the Commission.

RECEIVED

APR 24 1985

BUREAU OF LAND MANAGEMENT
FARMINGTON RESOURCE AREA

RECEIVED

SEP 13 1985

OIL CON. DIV.
DIST. 3

CERTIFICATION

I hereby certify that the information contained herein is true and complete to the best of my knowledge and belief.

Name *[Signature]*
Position
Agent

Company
Minel, Inc.

Date
April 16, 1985

I hereby certify that the well location shown on this plat was plotted from field notes of actual surveys made by me or under my supervision, and that the same is true and correct to the best of my knowledge and belief.

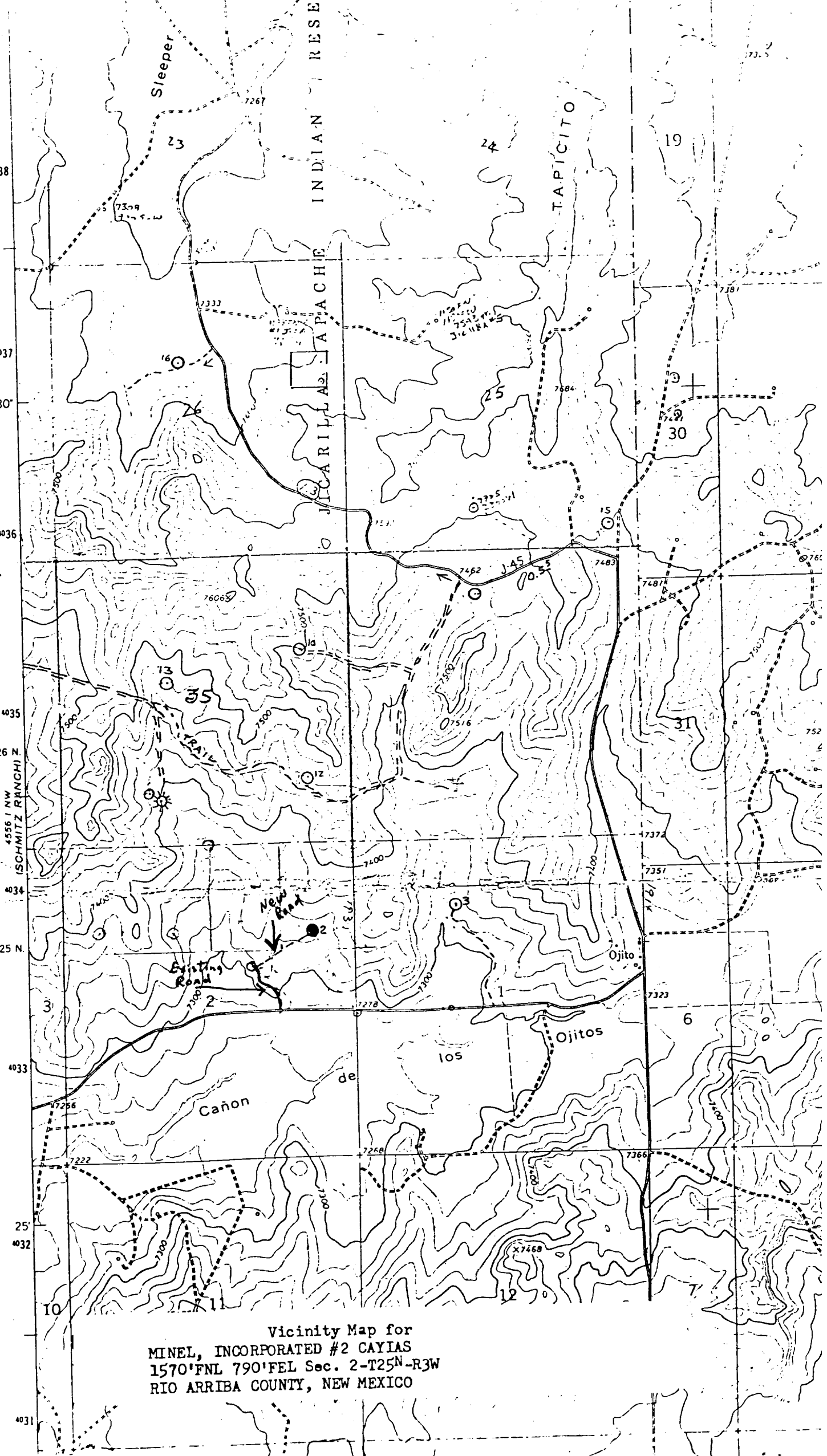
Date Surveyed
February 28, 1985

Registered Professional Engineer and Land Surveyor

[Signature]
Frederick B. Kerr

Certificate No.
3950

1500' new road



Vicinity Map for
MINEL, INCORPORATED #2 CAYIAS
1570'FNL 790'FEL Sec. 2-T25N-R3W
RIO ARriba COUNTY, NEW MEXICO