

UNITED STATES
DEPARTMENT OF THE INTERIOR
GEOLOGICAL SURVEY

(Other instructions on
reverse side)

Form No. 100-100-100-100

20-034-27889

APPLICATION FOR PERMIT TO DRILL, DEEPEN, OR PLUG BACK

1a. TYPE OF WORK

DRILL ☒

DEEPEN ☐

PLUG BACK ☐

b. TYPE OF WELL

OIL
WELL ☒

GAS
WELL ☐

OTHER

SINGLE
ZONE ☒

MULTIPLE
ZONE ☐

2. NAME OF OPERATOR

COTTON PETROLEUM CORPORATION

3. ADDRESS OF OPERATOR

3773 CHERRY CREEK DRIVE NORTH #750, DENVER, CO 80209

4. LOCATION OF WELL (Report location clearly and in accordance with any State requirements.)*

At surface 2710' FNL 510' FEL

At proposed prod. zone

14. DISTANCE IN MILES AND DIRECTION FROM NEAREST TOWN OR POST OFFICE*

15. DISTANCE FROM PROPOSED*

LOCATION TO NEAREST
PROPERTY OR LEASE LINE, FT.
(Also to nearest drlg. unit line, if any)

18. DISTANCE FROM PROPOSED LOCATION*
TO NEAREST WELL, DRILLING, COMPLETED,
OR APPLIED FOR, ON THIS LEASE, FT.

21. ELEVATIONS (Show whether DF, RT, GR, etc.)

6863'

23.

PROPOSED CASING AND CEMENTING PROGRAM

SIZE OF HOLE	SIZE OF CASING	WEIGHT PER FOOT	SETTING DEPTH	
12-1/4"	8-5/8"	24#	380'	300 SXS
7-7/8"	4-1/2"	10.5#	7515'	1300 SXS OR SUFFICIENT VOLUME TO COVER OJO ALAMO AT APPROX. 2531'

- A. LOCATION PLAT
B. DRILLING PROGNOSIS
C. SURFACE USE PLAN
C1. PRODUCTION CASING CEMENT
C2. SURFACE CASING CEMENT
D. SCHEMATIC DIAGRAM OF RIG
BOP & MANIFOLD
E. BOP TEST PROCEDURE
F. RIG LAYOUT
F1. INVENTORY
G. EXISTING & PLANNED ACCESS
ROADS
H. EXISTING WELLS - 1 MILE RADIUS

- I. EXISTING OR PROPOSED FACILITIES - 1 MILE
- RADIUS
J. DETAILED LOCATION PLAT OF PRODUCTION
FACILITIES
K. WELL SITE LAYOUT
L. DRILL PAD LAYOUT WITH ELEVATIONS
L1. CROSS SECTIONS OF PLANNED CUT & FILL
ACROSS LOCATION
M. LEASE SEPCIAL STIPULATIONS

This action is subject to technical and
procedural review pursuant to 43 CFR 3165.3
and appeal pursuant to 43 CFR 3165.4.

IN ABOVE SPACE DESCRIBE PROPOSED PROGRAM: If proposal is to deepen or plug back, give data on present productive zone and proposed new productive zone. If proposal is to drill or deepen directionally, give pertinent data on subsurface locations and measured and true vertical depths. Give blowout preventer program, if any.

24.

SIGNED

TITLE DIVISION PRODUCTION MGR.

DATE 9/11/85

(This space for Federal or State of use)

PERMIT NO.

APPROVAL DATE

APPROVED BY

CONDITIONS OF APPROVAL, IF ANY:

RECEIVED
OCT 10 1985

OIL CON. DIV.
DIST. 3

NMOCIC

APPROVED
AS AMENDED

OCT 08 1985
(330.) MAT. MILLENBACH
M. MILLENBACH
MANAGER

WELL LOCATION AND ACREAGE DEDICATION PLAT

Superior 0-128
Effective 1-1-65

All distances must be from the outer boundaries of the Section.

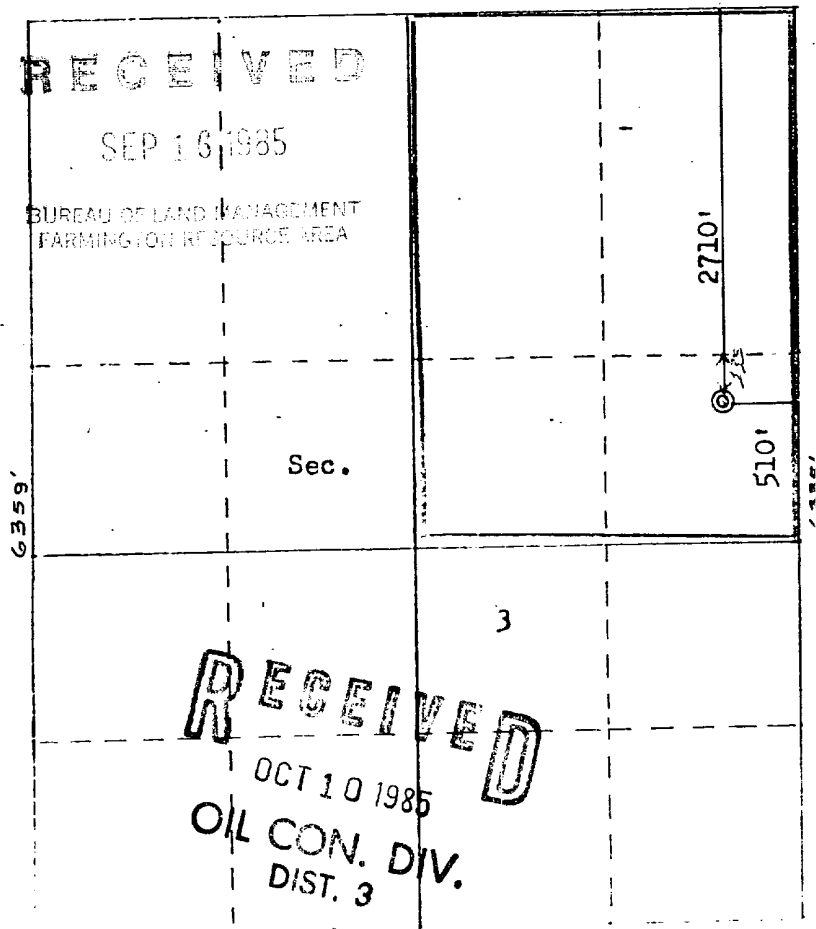
Operator COTTON PETROLEUM CORPORATION			Lease APACHE		Well No. 155
Unit Letter H	Section 3	Township 24N	Range 4W	County Rio Arriba	
Actual Footage Location of Well: 2710 feet from the North line and 510 feet from the East line					
Ground Level Elev. 6863	Producing Formation GALLUP DAKOTA		Pool LINDRITH GALLUP DAKOTA WEST		Dedicated Acreage: 223 223 224 4 Acres

1. Outline the acreage dedicated to the subject well by colored pencil or hatchure marks on the plat below.
2. If more than one lease is dedicated to the well, outline each and identify the ownership thereof (both as to working interest and royalty).
3. If more than one lease of different ownership is dedicated to the well, have the interests of all owners been consolidated by communitization, unitization, force-pooling, etc?

☐ Yes ☐ No If answer is "yes," type of consolidation _____

If answer is "no," list the owners and tract descriptions which have actually been consolidated. (Use reverse side of this form if necessary.) _____

No allowable will be assigned to the well until all interests have been consolidated (by communitization, unitization, forced-pooling, or otherwise) or until a non-standard unit, eliminating such interests, has been approved by the Commission.



Scale: 1"=1320'

CERTIFICATION

I hereby certify that the information contained herein is true and complete to the best of my knowledge and belief.

Name _____

Position _____

Company _____

Date _____

I hereby certify that the well location shown on this plat was plotted from field notes of actual surveys made by me or under my supervision, and that the same is true and correct to the best of my knowledge and belief.

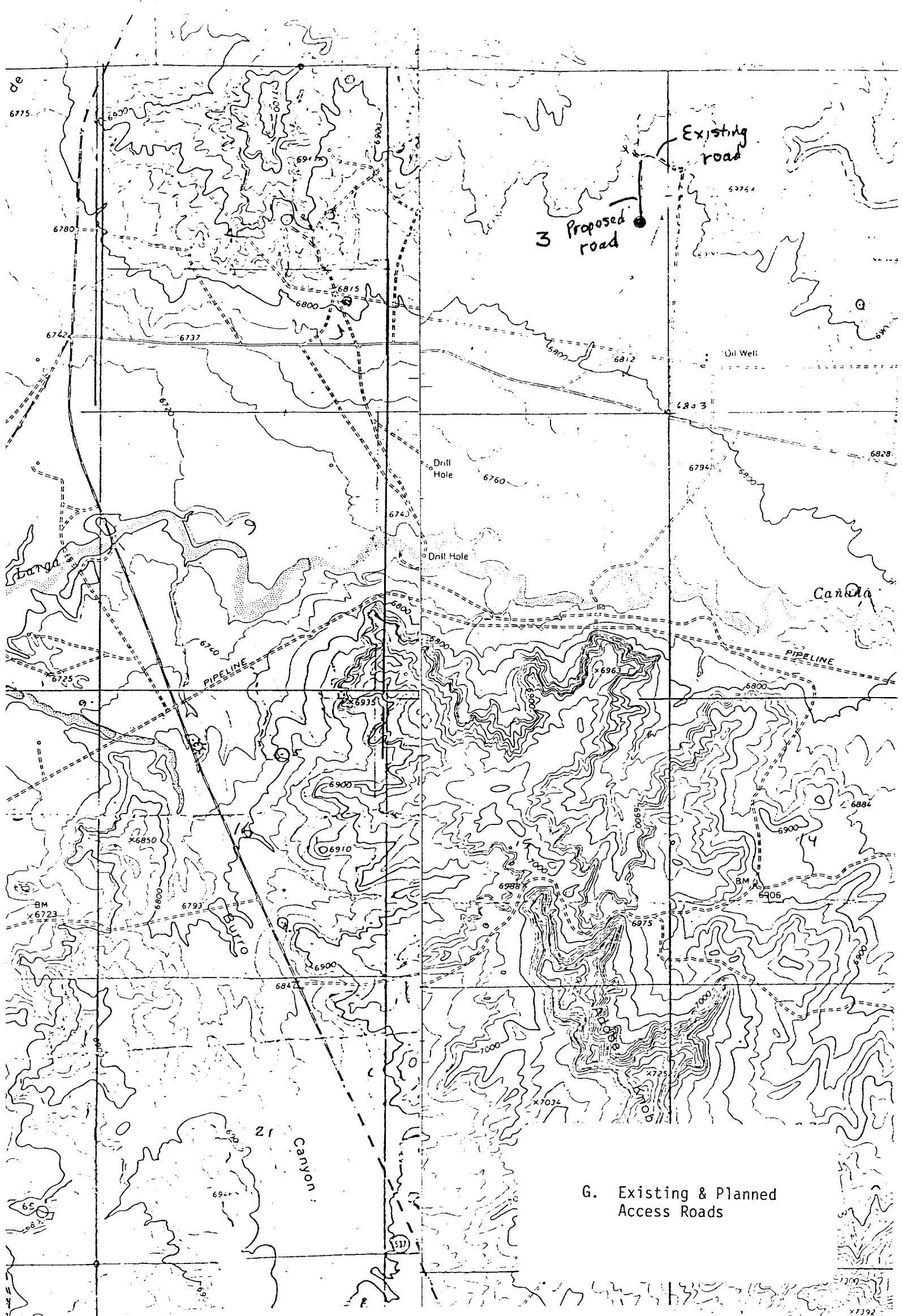
Date Surveyed _____

September 10, 1985

Registered Professional Engineer and Land Surveyor

Fred B. Kert Jr.

3953 E.R. JR.



Vicinity Map for
COTTON PETROLEUM CORPORATION #155 APACHE
2710 FNL 510 FEL Sec. 3-T2LN-RLW
RIO ARRIBA COUNTY, NEW MEXICO