

UNITED STATES
DEPARTMENT OF THE INTERIOR
GEOLOGICAL SURVEY

APPLICATION FOR PERMIT TO DRILL, DEEPEN, OR PLUG BACK

1a. TYPE OF WORK

DRILL ☒

DEEPEN ☐

PLUG BACK ☐

b. TYPE OF WELL

OIL
WELL ☒

GAS
WELL ☐

OTHER

SINGLE
ZONE ☒

MULTIPLE
ZONE ☐

2. NAME OF OPERATOR

COTTON PETROLEUM CORPORATION

3. ADDRESS OF OPERATOR

3773 CHERRY CREEK DRIVE NORTH #750, DENVER, CO 80209

4. LOCATION OF WELL (Report location clearly and in accordance with applicable requirements.)

At surface

2000' FNL 610' FWL

At proposed prod. zone

14. DISTANCE IN MILES AND DIRECTION FROM NEAREST TOWN OR POST OFFICE*

BUREAU OF LAND MANAGEMENT

15. DISTANCE FROM PROPOSED*

LOCATION TO NEAREST
PROPERTY OR LEASE LINE, FT.
(Also to nearest drlg. unit line, if any)

16. NO. OF ACRES IN LEASE

2665

17. NO. OF ACRES ASSIGNED
TO THIS WELL

160 JNT w/ Apache 116

18. DISTANCE FROM PROPOSED LOCATION*
TO NEAREST WELL, DRILLING, COMPLETED,
OR APPLIED FOR, ON THIS LEASE, FT.

19. PROPOSED DEPTH

7465'

20. ROTARY OR CABLE TOOLS

ROTARY

21. ELEVATIONS (Show whether DF, RT, GR,

6815'

DRILLING OPERATIONS AUTHORIZED ARE
SUBJECT TO COMPLIANCE WITH ATTACHED

22. APPROX. DATE WORK WILL START*

10/7/85

23.

GENERAL REQUIREMENTS AND CEMENTING PROGRAM

This action is subject to technical and
procedural review pursuant to 43 CFR 3165.3
and appeal pursuant to 43 CFR 3165.4.

SIZE OF HOLE	SIZE OF CASING	WEIGHT PER FOOT	SETTING DEPTH	
12-1/4"	8-5/8"	24#	380'	300 SXS
7-7/8"	4-1/2"	10.5#	7465'	1300 SXS OR SUFFICIENT VOLUME TO COVER OJO ALAMO AT APPROX. 2520'

- A. LOCATION PLAT
B. DRILLING PROGNOSIS
C. SURFACE USE PLAN
C1. PRODUCTION CASING CEMENT
C2. SURFACE CASING CEMENT
D. SCHEMATIC DIAGRAM OF RIG
BOP & MANIFOLD
E. BOP TEST PROCEDURE
F. RIG LAYOUT
F1. INVENTORY
G. EXISTING & PLANNED ACCESS
ROADS
H. EXISTING WELLS - 1 MILE RADIUS

- I. EXISTING OR PROPOSED FACILITIES - 1 MILE
- RADIUS
J. DETAILED LOCATION PLAT OF PRODUCTION
FACILITIES
K. WELL SITE LAYOUT
L. DRILL PAD LAYOUT WITH ELEVATIONS
L1. CROSS SECTIONS OF PLANNED CUT & FILL
ACROSS LOCATION
M. LEASE SEPICAL STIPULATIONS

IN ABOVE SPACE DESCRIBE PROPOSED PROGRAM: If proposal is to deepen or plug back, give data on present productive zone and proposed new productive zone. If proposal is to drill or deepen directionally, give pertinent data on subsurface locations and measured and true vertical depths. Give blowout preventer program, if any.

24.

SIGNED

TITLE

DIVISION PRODUCTION MGR.

DATE 9/11/85

(This space for Federal or State office use)

PERMIT NO.

APPROVED BY

CONDITIONS OF APPROVAL, IF ANY:

RECEIVED

TITLE

OCT 10 1985

OIL CON. DIV.
DIST. 3

NMOCC

APPROVED
AS AMENDED

OCT 07 1985
(SGD.) MAT. MILLENBACH
M. MILLENBACH
AREA MANAGER

NEW MEXICO OIL CONSERVATION COMMISSION
WELL LOCATION AND ACREAGE DEDICATION PLAT

Form C-102
Supersedes C-128
Effective 1-1-65

All distances must be from the outer boundaries of the Section.

Operator COTTON PETROLEUM CORPORATION			Lease APACHE		Well No. 152
Unit Letter E	Section 12	Township 24N	Range 4W	County Rio Arriba	
Actual Footage Location of Well: 2000 feet from the North line and 610 feet from the West line					
Ground Level Elev: 6815	Producing Formation GALLUP DAKOTA		Pool LINDRITH GALLUP DAKOTA WEST		Dedicated Acreage: 160 Acres

1. Outline the acreage dedicated to the subject well by colored pencil or hachure marks on the plat below.
2. If more than one lease is dedicated to the well, outline each and identify the ownership thereof (both as to working interest and royalty).
3. If more than one lease of different ownership is dedicated to the well, have the interests of all owners been consolidated by communitization, unitization, force-pooling, etc?

☐ Yes ☐ No If answer is "yes," type of consolidation _____

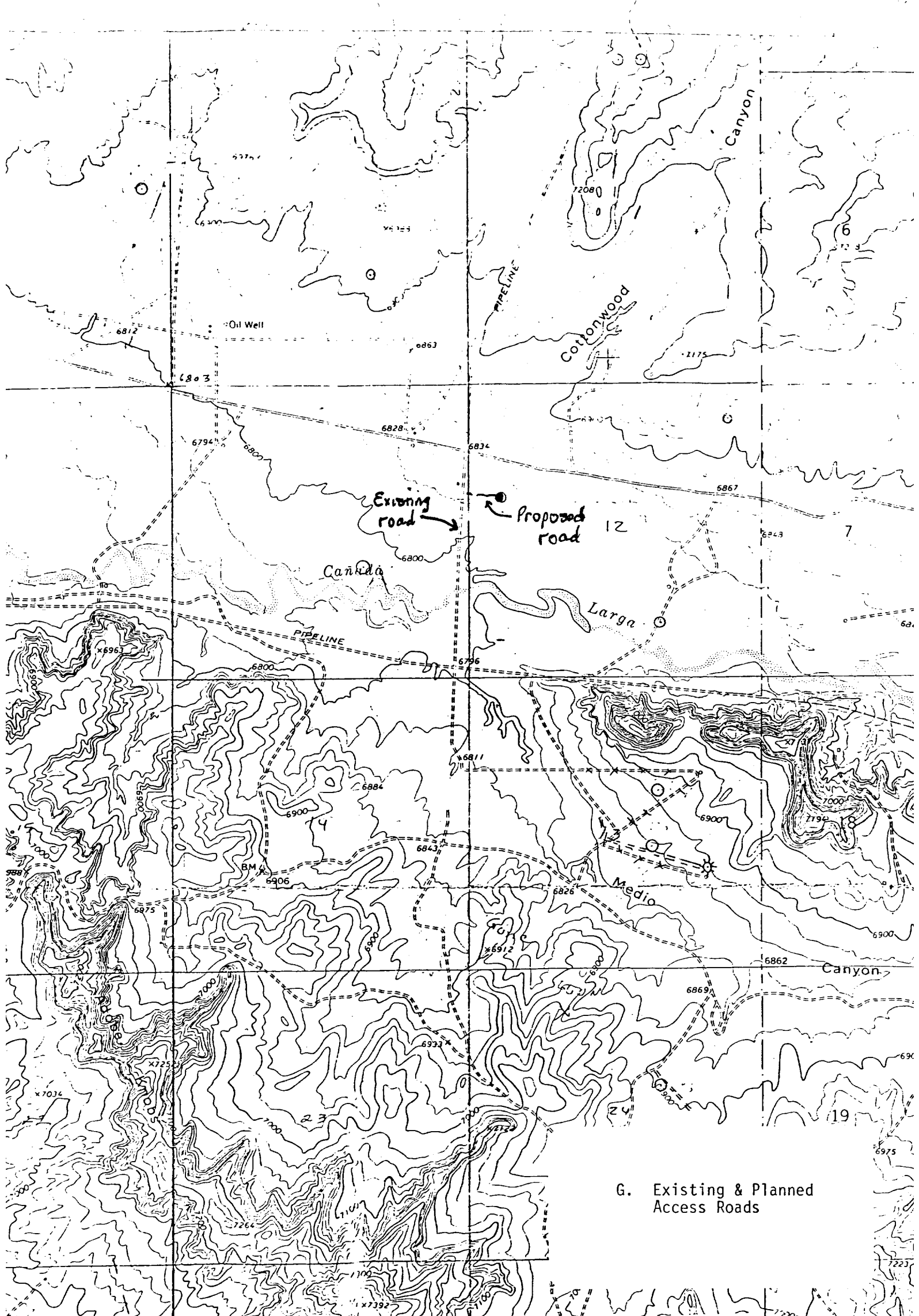
If answer is "no," list the owners and tract descriptions which have actually been consolidated. (Use reverse side of this form if necessary.) _____

No allowable will be assigned to the well until all interests have been consolidated (by communitization, unitization, forced-pooling, or otherwise) or until a non-standard unit, eliminating such interests, has been approved by the Commission.

	<p>RECEIVED</p> <p>SEP 16 1985</p> <p>BUREAU OF LAND MANAGEMENT FARMINGTON RESOURCE AREA</p>
	<p>12</p> <p>RECEIVED</p> <p>OCT 10 1985</p> <p>OIL CON. DIV DIST. 3</p>

Scale: 1"=1000'

<p>CERTIFICATION</p> <p>I hereby certify that the information contained herein is true and complete to the best of my knowledge and belief.</p> <p><i>[Signature]</i></p>	
Name	
Position	
Company	
Date	
<p>I hereby certify that the well location shown on this plat was plotted from field notes of actual surveys made by me or under my supervision, and that the same is true and correct to the best of my knowledge and belief.</p>	
Date Surveyed	September 4, 1985
Registered Professional Engineer and Land Surveyor	<i>[Signature]</i> Fred B. Kerr Jr.
Certificate No.	3750



G. Existing & Planned Access Roads

Vicinity Map for
COTTON PETROLEUM CORPORATION #152 APACHE
2000'FNL 610'FWL Sec. 12-T2LN-RLW
RIO ARRIBA COUNTY, NEW MEXICO