

UNITED STATES
DEPARTMENT OF THE INTERIOR
GEOLOGICAL SURVEY

APPLICATION FOR PERMIT TO DRILL, DEEPEN, OR PLUG BACK

1a. TYPE OF WORK

DRILL ☒

DEEPEN ☐

PLUG BACK ☐

b. TYPE OF WELL

OIL
WELL ☒

GAS
WELL ☐

OTHER

SINGLE
ZONE ☒

MULTIPLE
ZONE ☐

2. NAME OF OPERATOR

COTTON PETROLEUM CORPORATION

3. ADDRESS OF OPERATOR

3773 CHERRY CREEK DRIVE NORTH #750, DENVER, CO 80209

4. LOCATION OF WELL (Report location clearly and in accordance with applicable requirements)

At surface

410' FNL 2140' FEL

At proposed prod. zone

SEP 20 1985

14. DISTANCE IN MILES AND DIRECTION FROM NEAREST TOWN OR POST OFFICE*

BUREAU OF LAND MANAGEMENT
FARMINGTON RESOURCE AREA

15. DISTANCE FROM PROPOSED*

LOCATION TO NEAREST
PROPERTY OR LEASE LINE, FT.
(Also to nearest drlg. unit line, if any)

16. NO. OF ACRES IN LEASE

2665

17. NO. OF ACRES ASSIGNED

TO THIS WELL
2665 Unit w/ Apache 106

18. DISTANCE FROM PROPOSED LOCATION*
TO NEAREST WELL, DRILLING, COMPLETED,
OR APPLIED FOR, ON THIS LEASE, FT.

19. PROPOSED DEPTH

7831'

20. ROTARY OR CABLE TOOLS

ROTARY

21. ELEVATIONS (Show whether DF, RT, GR, etc.)

7077'

22. APPROX. DATE WORK WILL START*

10/7/85

23.

PROPOSED CASING AND CEMENTING PROGRAM This action is subject to technical and
procedural review pursuant to 43 CFR 3165.3
and appeal pursuant to 43 CFR 3165.4.

SIZE OF HOLE	SIZE OF CASING	WEIGHT PER FOOT	SETTING DEPTH	
12-1/4"	8-5/8"	24#	380'	300 SXS
7-7/8"	4-1/2"	10.5#	7831'	1300 SXS OR SUFFICIENT VOLUME TO COVER OJO ALAMO AT APPROX. 2864'

- A. LOCATION PLAT
- B. DRILLING PROGNOSIS
- C. SURFACE USE PLAN
- C1. PRODUCTION CASING CEMENT
- C2. SURFACE CASING CEMENT
- D. SCHEMATIC DIAGRAM OF RIG
BOP & MANIFOLD
- E. BOP TEST PROCEDURE
- F. RIG LAYOUT
- F1. INVENTORY
- G. EXISTING & PLANNED ACCESS
ROADS
- H. EXISTING WELLS - 1 MILE RADIUS

- I. EXISTING OR PROPOSED FACILITIES - 1 MILE
- RADIUS
- J. DETAILED LOCATION PLAT OF PRODUCTION
FACILITIES
- K. WELL SITE LAYOUT
- L. DRILL PAD LAYOUT WITH ELEVATIONS
- L1. CROSS SECTIONS OF PLANNED CUT & FILL
ACROSS LOCATION
- M. LEASE SEPCIAL STIPULATIONS

IN ABOVE SPACE DESCRIBE PROPOSED PROGRAM: If proposal is to deepen or plug back, give data on present productive zone and proposed new productive zone. If proposal is to drill or deepen directionally, give pertinent data on subsurface locations and measured and true vertical depths. Give blowout preventer program, if any.

24.

SIGNED

TITLE DIVISION PRODUCTION MGR.

DATE 9/11/85

(This space for Federal or State office use)

PERMIT NO.

APPROVAL DATE

APPROVED BY

CONDITIONS OF APPROVAL, IF ANY:

APPROVED
AS AMENDED

NOV 08 1985

/s/ J. Stan McKee

M. MILLENBACH
AREA MANAGER

NMOCC

WELL LOCATION AND ACREAGE DEDICATION PLAT

Form C-128
Effective 1-1-65

All distances must be from the outer boundaries of the Section.

Operator COTTON PETROLEUM CORPORATION			Lease APACHE		Well No. 153
Unit Letter B	Section 1	Township 24N	Range 4W	County Rio Arriba	
Actual Footage Location of Well:					
410		feet from the	North	line and	2140
				feet from the	East
Ground Level Elev: 7077	Producing Formation Gallup Dakota		Pool Lindrith Gallup Dakota W.	Dedicated Acreage: 219 220.47 Acres	

- Outline the acreage dedicated to the subject well by colored pencil or hatchure marks on the plat below.
- If more than one lease is dedicated to the well, outline each and identify the ownership thereof (both as to working interest and royalty).
- If more than one lease of different ownership is dedicated to the well, have the interests of all owners been consolidated by communitization, unitization, force-pooling, etc?

☐ Yes ☐ No If answer is "yes," type of consolidation _____

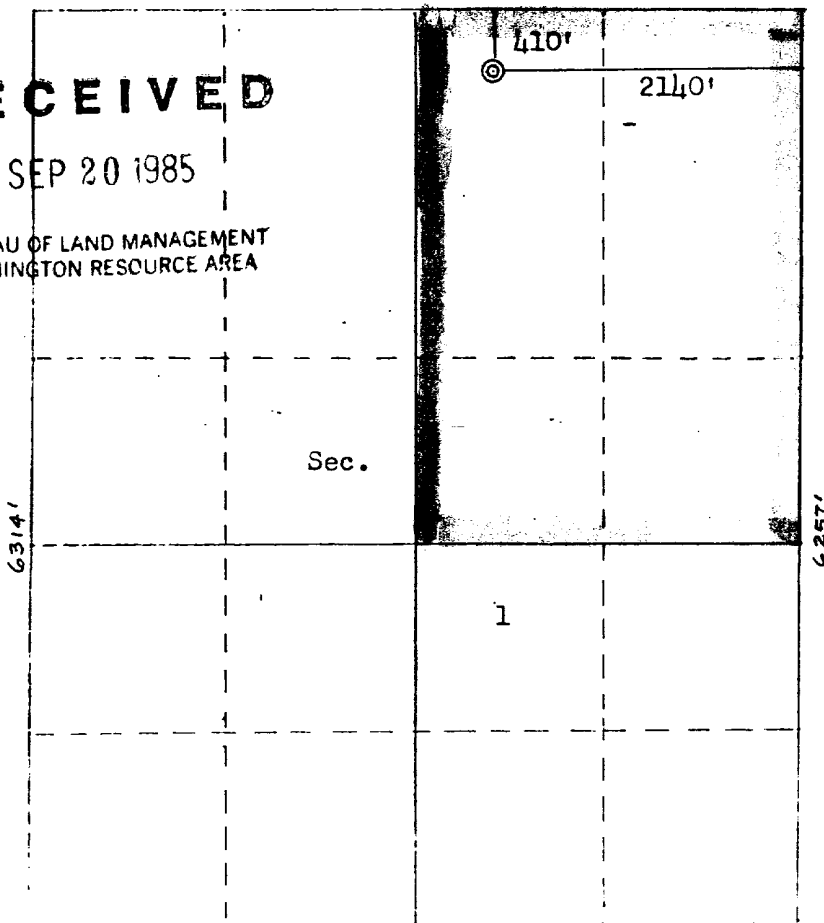
If answer is "no," list the owners and tract descriptions which have actually been consolidated. (Use reverse side of this form if necessary.) _____

No allowable will be assigned to the well until all interests have been consolidated (by communitization, unitization, forced-pooling, or otherwise) or until a non-standard unit, eliminating such interests, has been approved by the Commission.

RECEIVED

SEP 20 1985

BUREAU OF LAND MANAGEMENT
FARMINGTON RESOURCE AREA



Scale: 1"=1320'

CERTIFICATION

I hereby certify that the information contained herein is true and complete to the best of my knowledge and belief.

Name

Position

Division Production Mgr.

Company

Cotton Petroleum Corporation

Date

September 17, 1985

I hereby certify that the well location shown on this plat was plotted from field notes of actual surveys made by me or under my supervision, and that the same is true and correct to the best of my knowledge and belief.

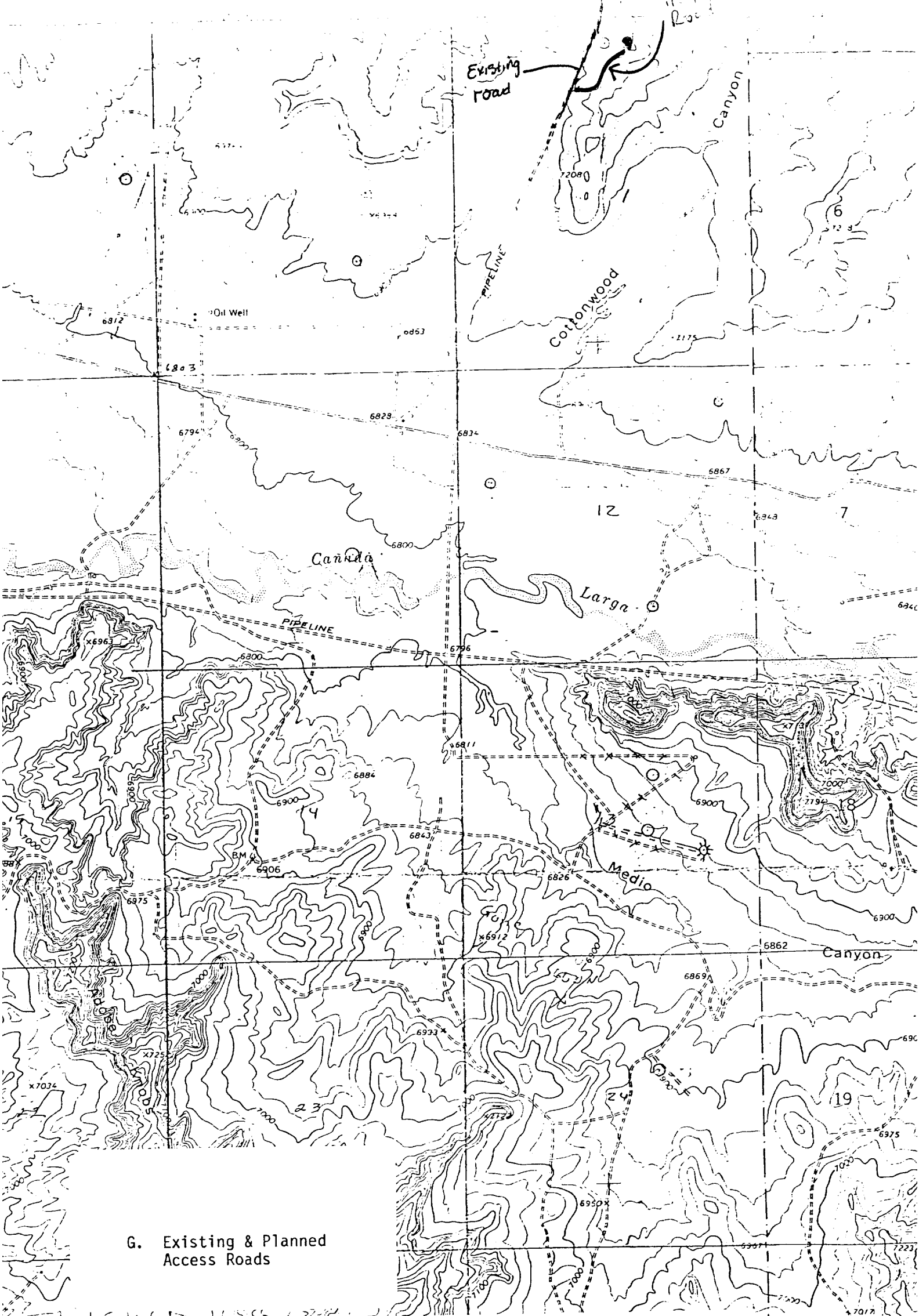
Date Surveyed

September 17, 1985

Registered Professional Engineer and Land Surveyor

Fred B. Kerr

Certificate No. 2058 Exp. 10



Vicinity Map for
COTTON PETROLEUM CORPORATION #153 APACHE
410'FNL 2140'FEL Sec. 1-T24N-R4W
RIO ARRIBA COUNTY, NEW MEXICO