

50 YEARS



TONY ANAYA
GOVERNOR

STATE OF NEW MEXICO
ENERGY AND MINERALS DEPARTMENT
OIL CONSERVATION DIVISION

January 16, 1986



1935 - 1985

POST OFFICE BOX 2088
STATE LAND OFFICE BUILDING
SANTA FE, NEW MEXICO 87501
(505) 827-5800

Merrion Oil & Gas Corp.
P. O. Box 840
Farmington, New Mexico 87499

Attention: Steve S. Dunn

Administrative Order NSL-2217

Gentlemen:

Reference is made to your application for a non-standard location for your NCRA State No. 8 well to be located 2350 feet from the North line and 2000 feet from the East line of Section 16, Township 24 North, Range 6 West, NMPM, Devils Fork Mesaverde Pool, Rio Arriba County, New Mexico. The SW/4 NE/4 of said Section 16 shall be dedicated to the well.

By authority granted me under the provisions of Rule 104 F(I), the above-described unorthodox location is hereby approved.

Sincerely,

R. L. STAMETS, DIRECTOR

RLS/DC/dr

cc: Oil Conservation Division - Aztec
Oil and Gas Division - State Land Office - Santa Fe

RECEIVED

JAN 22 1986

OIL CON. DIV.
DIST. 2



STATE OF NEW MEXICO
ENERGY AND MINERALS DEPARTMENT
OIL CONSERVATION DIVISION
AZTEC DISTRICT OFFICE

1000 RIO BRAZOS ROAD
AZTEC, NEW MEXICO 87410
(505) 334-6178

OIL CONSERVATION DIVISION
BOX 2088
SANTA FE, NEW MEXICO 87501

DATE 1-8-86

RE: Proposed MC _____
Proposed DHC _____
Proposed NSL X _____
Proposed SWD _____
Proposed WFX _____
Proposed PHX _____

Gentlemen:

I have examined the application dated 12-31-85
for the Merion Oil & Gas Corp. NCRA State #8 G-16-24N-6W
Operator Lease and Well No. Unit, S-T-R

and my recommendations are as follows:

Approve

Yours truly,

Jim Burch

MERRION OIL & GAS CORPORATION

P. O. Box 840
FARMINGTON, NEW MEXICO 87499

December 26, 1985

State of New Mexico
Energy and Minerals Department
Oil Conservation Division
P. O. Box 2088
Santa Fe, New Mexico 87501

Re: NCRA State No. 8
Sec. 16, T24N, R6W
Rio Arriba Co., New Mexico


Dear Sir:

The above referred to location is for a well to be drilled to the Mesaverde Formation. This location is non-standard because of topography. Certified Letters have been sent to the offsetting operators advising them of this location. We hereby request approval of this location for drilling.

Thank you for your assistance in this matter.

Yours truly,

MERRION OIL & GAS CORPORATION



Steve S. Dunn, Operations Manager

SSD/am

Enc.

cc: Frank Chavez

RECEIVED
DEC 31 1985
OIL CON. DIV.
DIST. 3

STATE OF NEW MEXICO
ENERGY AND MINERALS DEPARTMENT

OIL CONSERVATION DIVISION

Form C-101
Revised 10-1-78

NO. OF COPIES RECEIVED	
DISTRIBUTION	
SANTA FE	
FILE	
U.S.G.S.	
LAND OFFICE	
OPERATOR	

P. O. BOX 2088
SANTA FE, NEW MEXICO 87501

5A. Indicate Type of Lease
STATE ☒ FEDERAL ☐
5. State Oil & Gas Lease No.
E 1207 - 6

APPLICATION FOR PERMIT TO DRILL, DEEPEN, OR PLUG BACK

1a. Type of Work DRILL <input checked="" type="checkbox"/> DEEPEN <input type="checkbox"/> PLUG BACK <input type="checkbox"/>		7. Unit Agreement Name
b. Type of Well OIL WELL <input checked="" type="checkbox"/> GAS WELL <input type="checkbox"/> OTHER <input type="checkbox"/>		8. Form of Lease Name NCRA State
c. Name of Operator Merrion Oil & Gas Corporation		9. Well No. 8
d. Address of Operator P. O. Box 840, Farmington, New Mexico 87499		10. Field and Pool, or Well Unit Devils Fork Mesaverde
4. Location of Well UNIT LETTER G LOCATED 2350 FEET FROM THE North LINE AND 2000 FEET FROM THE East LINE OF SEC. 16 TWP. 24N RGE. 6W		12. County Rio Arriba
11. Proposed Depth 4830'		13A. Formation Mesaverde
13B. Drilling Contractor Statewide		13. Rotary or C.R.
14. Estimated Depth of Oil, Gas, or Other Product 6636' GL		22. Approx. Date Work will start Winter/1986

PROPOSED CASING AND CEMENT PROGRAM

SIZE OF HOLE	SIZE OF CASING	WEIGHT PER FOOT	SETTING DEPTH	SACKS OF CEMENT	EST. TOP
12-1/4"	8-5/8", J-55	24 #/ft.	200	175 sx Class B 3% CaCl ₂ (206.5 cu. ft.)	3% CaCl ₂ (206.5)
7-7/8"	4-1/4", J-55	10.5 #/ft.	4830'	625 sx (1099 cu. ft.)	

Propose to drill 12-1/4" hole to 200' and set 200' of 8-5/8", 24 #/ft. surface casing with 175 sx Class B 3% CaCl₂ (206.5 cu. ft.). Will drill 7-7/8" hole to TD and run open hole logs. If appears productive, will run 4-1/2", 10.5 #/ft, J-55 casing to 4830' and cement with 400 sx Class B 2% D-79, yield 2.06 cu. ft/sk (824 cu. ft.) cement followed by 225 sx Class H 2% gel, 1.22 cu. ft/sk yield (275 cu. ft.) cement to cover Mesaverde, Chacra, Pictured Cliffs, Fruitland and Ojo Alamo. Estimated top of cement is at the surface. Will perforate and stimulate as necessary. 10" 900 series double ram preventers will be used in drilling. Drilling fluid will be low solids, non-dispersed, low water loss mud using bentonite, starch, CMC and fresh water.

Est. tops on back.

IN ABOVE SPACE DESCRIBE PROPOSED PROGRAM; IF PROPOSAL IS TO DEEPEN OR PLUG BACK, GIVE DATA ON PRESENT PRODUCTIVE ZONE AND PROPOSED NEW PRODUCTIVE ZONE. GIVE FLOWLINE PREVENTER PROGRAM, IF ANY.

I hereby certify that the information above is true and complete to the best of my knowledge and belief.

Signed Steve Salas Title Operations Manager Date 12/18/85
(This space for State Use)

APPROVED BY _____ TITLE _____ DATE _____

CONDITIONS OF APPROVAL, IF ANY:

NSR 2217

RECEIVED
DEC 31 1985
OIL CON. DIV.
DIST. 3

All distances must be from the outer boundaries of the Section

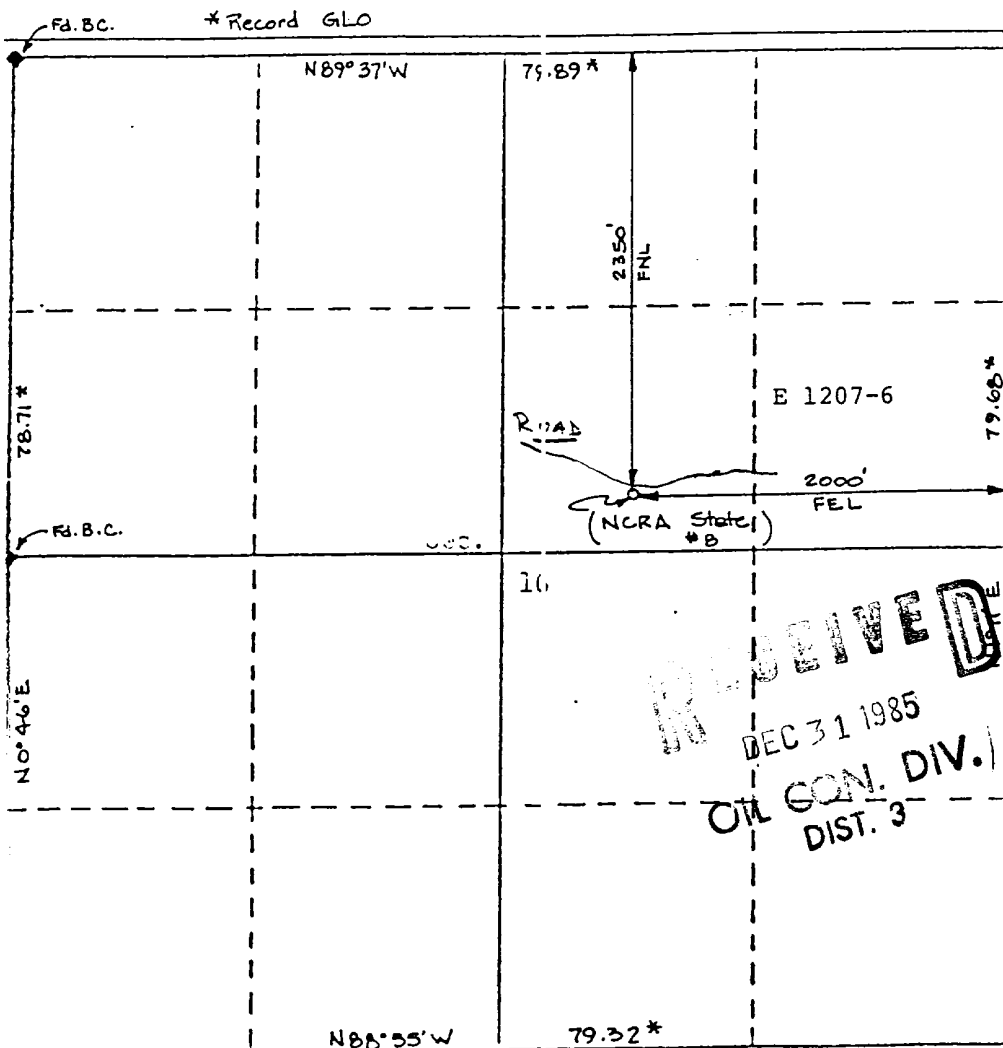
Operator MERRION OIL & GAS CORP			Lease NCRA State		Well No. 8
Unit Letter G	Section 16	Township 24N	Range 6W	County Rio Arriba	
Actual Wellbore Location of Well:					
2350		feet from the	North	line and	2000
				feet from the	East
Ground Level Elev. 6636		Producing Formation Mesaverde		Dedicated Acreage: 40 Acres	
		Pool Devils Fork Mesaverde			

- Outline the acreage dedicated to the subject well by colored pencil or hatchure marks on the plat below.
- If more than one lease is dedicated to the well, outline each and identify the ownership thereof (both as to working interest and royalty).
- If more than one lease of different ownership is dedicated to the well, have the interests of all owners been consolidated by communitization, unitization, force-pooling, etc?

☐ Yes ☐ No If answer is "yes," type of consolidation _____

If answer is "no," list the owners and tract descriptions which have actually been consolidated. (Use reverse side of this form if necessary.) _____

No allowable will be assigned to the well until all interests have been consolidated (by communitization, unitization, forced-pooling, or otherwise) or until a non-standard unit, eliminating such interests, has been approved by the Division.



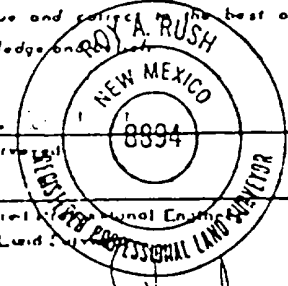
CERTIFICATION

I hereby certify that the information contained herein is true and complete to the best of my knowledge and belief.

Steve S. Dunn

Name
Steve S. Dunn
Position
Operations Manager
Company
Merrion Oil & Gas Corporation
Date
12/3/85

I hereby certify that the well location shown on this plat was plotted from field notes of actual surveys made by me or under my supervision, and that the same is true and correct to the best of my knowledge and belief.



Date Surveyed
12/3/85
Registered Professional Engineer
and/or Land Surveyor
Roy A. Rush
Certificate No.
8894

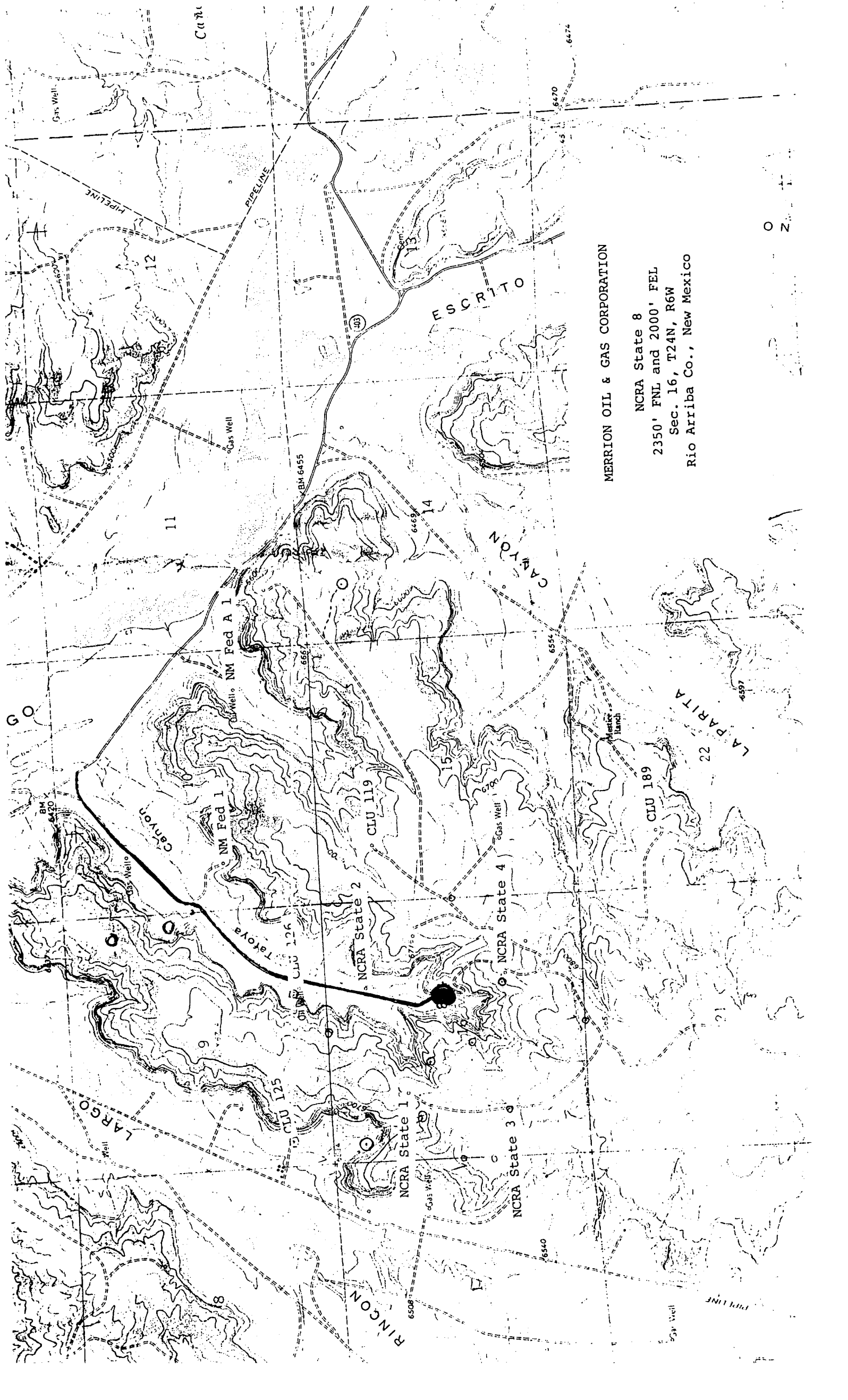
RECEIVED
DEC 31 1985
OIL CON. DIV.
DIST. 3

MERRION OIL & GAS CORPORATION

NCRA STATE No. 8

TOWNSHIP 24N RANGE 6W COUNTY Rio Arriba STATE New Mexico

<p>8</p>	<p>9</p> <p>MERRION OIL & GAS CORP.</p> <p>SF 078877</p>	<p>10</p> <p>(TEXACO)</p> <p>SF 079086</p> <p>GETTY OIL</p>
<p>17</p>	<p>MERRION OIL & GAS CORP.</p> <p>E-1207-4</p> <p>MERRION OIL & GAS CORP.</p> <p>E 1207-6</p>	<p>MERRION OIL & GAS CORP. 15</p> <p>SF 078628 A</p>
<p>20</p>	<p>MERRION OIL & GAS CORP.</p> <p>SF 078886</p> <p>21</p>	<p>MERRION OIL & GAS CORP.</p> <p>SF 078598</p> <p>22</p>



MERRION OIL & GAS CORPORATION

NCRA State 8
2350' FNL and 2000' FEL
Sec. 16, T24N, R6W
Rio Arriba Co., New Mexico

O N