

OIL CONSERVATION DIVISION

STATE OF NEW MEXICO
ENERGY AND MINERALS DEPARTMENTP. O. BOX 2088
SANTA FE, NEW MEXICO 87501Form C-102
Revised 10-1-76

All distances must be from the outer boundaries of the Section.

Operator ARCO OIL & GAS		Lease Gardner 13		Well No. 13-1 Alt.	
Unit Letter N	Section 13	Township 25 North	Range 3 West	County Rio Arriba	
Actual Footage Location of Well: (cardinal) 990 feet from the South line and 1850 feet from the West line					
Ground Level Elev. 7223	Producing Formation Gallup		Pool W. Lindrith - Gallup		Dedicated Acreage: 160 Acres

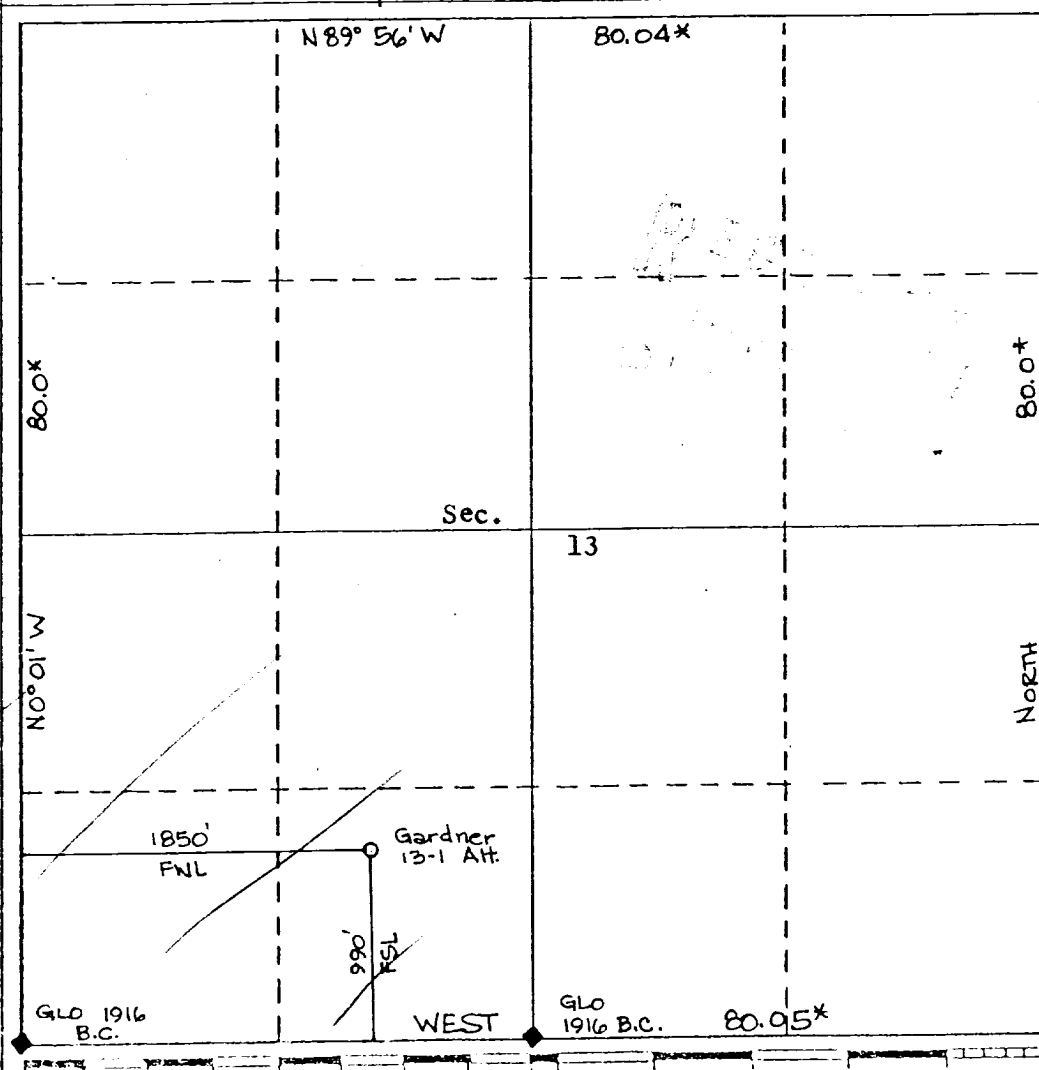
1. Outline the acreage dedicated to the subject well by colored pencil or hachure marks on the plat below.
2. If more than one lease is dedicated to the well, outline each and identify the ownership thereof (both as to working interest and royalty).
3. If more than one lease of different ownership is dedicated to the well, have the interests of all owners been consolidated by communitization, unitization, force-pooling, etc?

☐ Yes ☐ No If answer is "yes," type of consolidation _____

If answer is "no," list the owners and tract descriptions which have actually been consolidated. (Use reverse side of this form if necessary.) _____

No allowable will be assigned to the well until all interests have been consolidated (by communitization, unitization, forced-pooling, or otherwise) or until a non-standard unit, eliminating such interests, has been approved by the Division.

* Record GLO 1917 plat



CERTIFICATION

I hereby certify that the information contained herein is true and complete to the best of my knowledge and belief.

David Coyne
Name
Pred Supr
Position
ARCO Oil & Gas Co.
Company
May 12, 1986
Date

I hereby certify that the well location shown on this plat was plotted from field notes of actual surveys made by me or under my supervision, and that the same is true and correct to the best of my knowledge and belief.

Roy A. Rush
Date Surveyed
Aug. 13, 1986 8894
Registered Professional Engineer
and/or Land Surveyor
Certificate No.